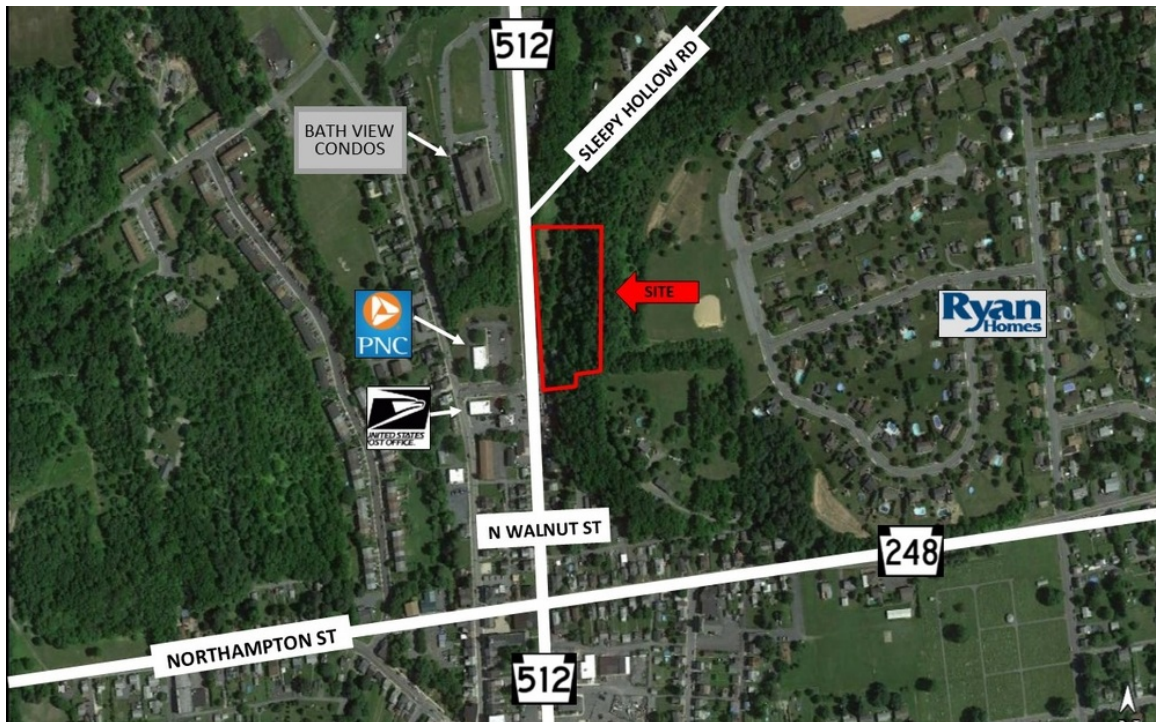


## LAND FOR SALE

# COMMERCIAL LAND

165 N Walnut Street, Bath, PA 18014



## OFFERING SUMMARY

<b>SALE PRICE:</b>	\$350,000
<b>AVAILABLE SF:</b>	
<b>LOT SIZE:</b>	3.76 Acres
<b>ZONING:</b>	R1-Low Density Residential
<b>PRICE / SF:</b>	\$2.14

## PROPERTY OVERVIEW

3.76 acre Commercial Land for Sale in Northampton County.

Lot has power, public water and public sewer on site. Land has 600 SF of frontage along N Walnut Street (Route 512).

Property is zoned R1-Low Density Residential, which allow use such as single-family detached dwelling, greenhouse, animal shelter and much more.

Located at signalized intersection of Walnut Street and Barrall Avenue on heavily travel Route 512. Property is across the street from United States Post Office, PNC Bank, Bath View Condo Association, and many more local businesses.

## DEMOGRAPHICS

	1 MILE	3 MILES	5 MILES
Total Households	1,677	5,513	15,928
Total Population	4,338	15,225	43,949
Average HH Income	\$60,548	\$78,727	\$88,893

ALLENTOWN, PA



**JAMES BALLIET**

Keller Williams-Allentown-The James Balliet Property Group

O: 610.435.1800

C: 610.972.6808

james@jbpropertygroup.com

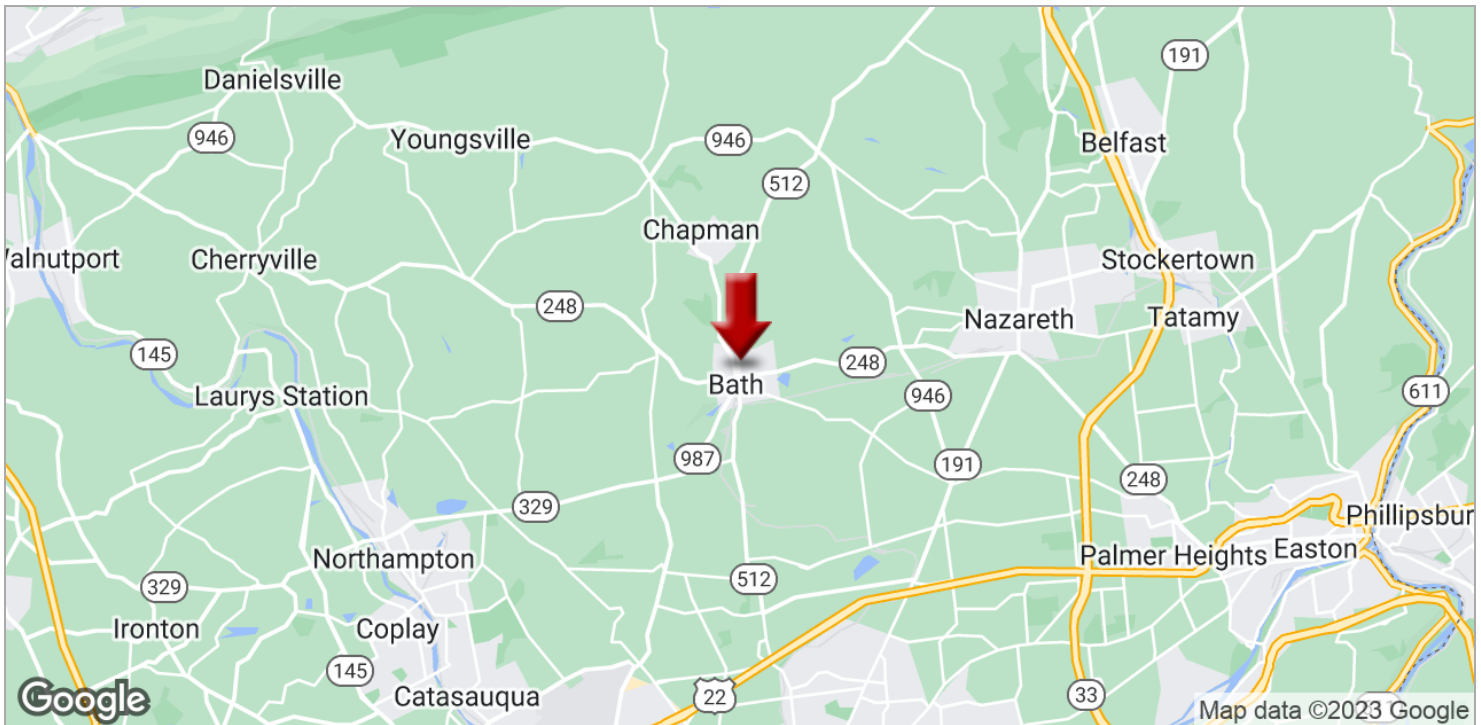
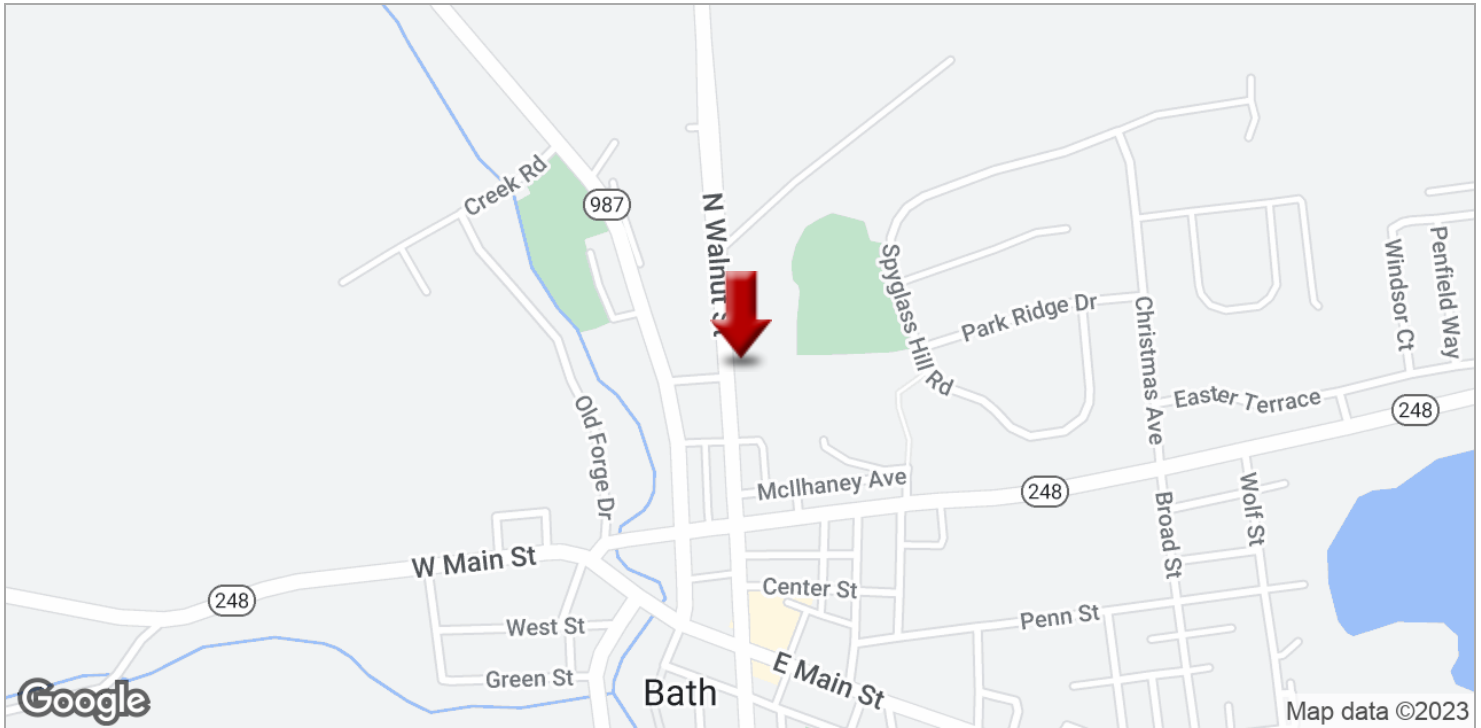
We obtained the information above from sources we believe to be reliable. However, we have not verified its accuracy and make no guarantee, warranty or representation about it. It is submitted subject to the possibility of errors, omissions, change of price, rental or other conditions, prior sale, lease or financing, or withdrawal without notice. We include projections, opinions, assumptions or estimates for example only, and they may not represent current or future performance of the property. You and your tax and legal advisors should conduct your own investigation of the property and transaction.

Each Office Independently Owned and Operated [TheCommercialPropertyGroup.com](http://TheCommercialPropertyGroup.com)

**LAND FOR SALE**

# COMMERCIAL LAND

165 N Walnut Street, Bath, PA 18014



**ALLENTOWN, PA**



**JAMES BALLIET**

Keller Williams-Allentown-The James Balliet Property Group

O: 610.435.1800

C: 610.972.6808

james@jbpropertygroup.com

We obtained the information above from sources we believe to be reliable. However, we have not verified its accuracy and make no guarantee, warranty or representation about it. It is submitted subject to the possibility of errors, omissions, change of price, rental or other conditions, prior sale, lease or financing, or withdrawal without notice. We include projections, opinions, assumptions or estimates for example only, and they may not represent current or future performance of the property. You and your tax and legal advisors should conduct your own investigation of the property and transaction.

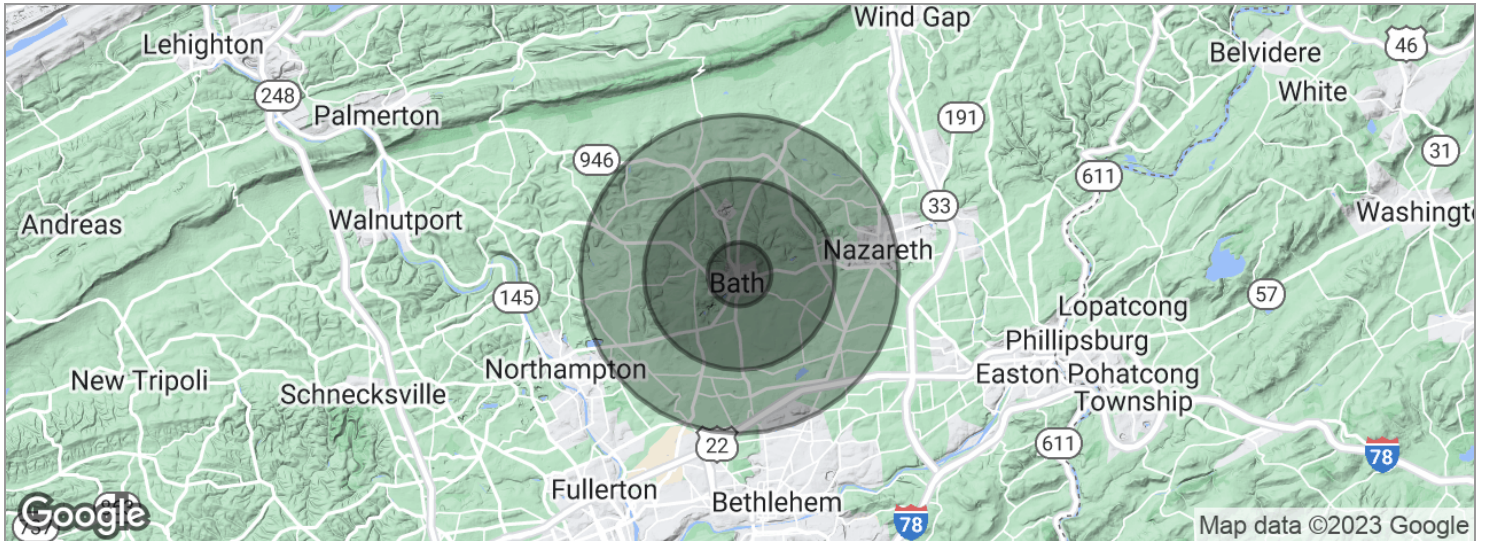
Each Office Independently Owned and Operated [TheCommercialPropertyGroup.com](http://TheCommercialPropertyGroup.com)



## LAND FOR SALE

# COMMERCIAL LAND

165 N Walnut Street, Bath, PA 18014



POPULATION	1 MILE	3 MILES	5 MILES
Total population	4,338	15,225	43,949
Median age	37.4	42.9	43.7
Median age (male)	32.2	41.0	42.7
Median age (Female)	40.8	44.4	44.7
HOUSEHOLDS & INCOME	1 MILE	3 MILES	5 MILES
Total households	1,677	5,513	15,928
# of persons per HH	2.6	2.8	2.8
Average HH income	\$60,548	\$78,727	\$88,893
Average house value	\$216,650	\$256,018	\$290,816

\* Demographic data derived from 2020 ACS - US Census

ALLENTOWN, PA



**JAMES BALLIET**

Keller Williams-Allentown-The James Balliet Property Group

O: 610.435.1800

C: 610.972.6808

james@jbpropertygroup.com

We obtained the information above from sources we believe to be reliable. However, we have not verified its accuracy and make no guarantee, warranty or representation about it. It is submitted subject to the possibility of errors, omissions, change of price, rental or other conditions, prior sale, lease or financing, or withdrawal without notice. We include projections, opinions, assumptions or estimates for example only, and they may not represent current or future performance of the property. You and your tax and legal advisors should conduct your own investigation of the property and transaction.

Each Office Independently Owned and Operated [TheCommercialPropertyGroup.com](https://TheCommercialPropertyGroup.com)