

For Sale or Lease

Up to 18,200 SF

Monument Signage on
Cooley Lake Road



1450 S Hospital Road

Waterford Township, Michigan 48327

Property Highlights

- Fantastic 18,200 SF Retail Building
- 1,000-18,200 Space Available For Lease. Up to Six Months Free
- Recently Renovated with Operating Restaurant/Bar/Nightclub
- Owner will Leaseback 9,100 SF, Sell Business with Sale of the Building, or Move Out if a User Needs the Entire Building
- Rare Investment / User Opportunity
- Prime Location Bordering West Bloomfield with Dense Surrounding Residential Population
- Ample Parking with Easy Ingress / Egress

OFFERING SUMMARY

Available SF	1,100-18,200 SF
Lease Rate	Contact Listing Agent(s)
Building Size	18,200 SF

DEMOGRAPHICS

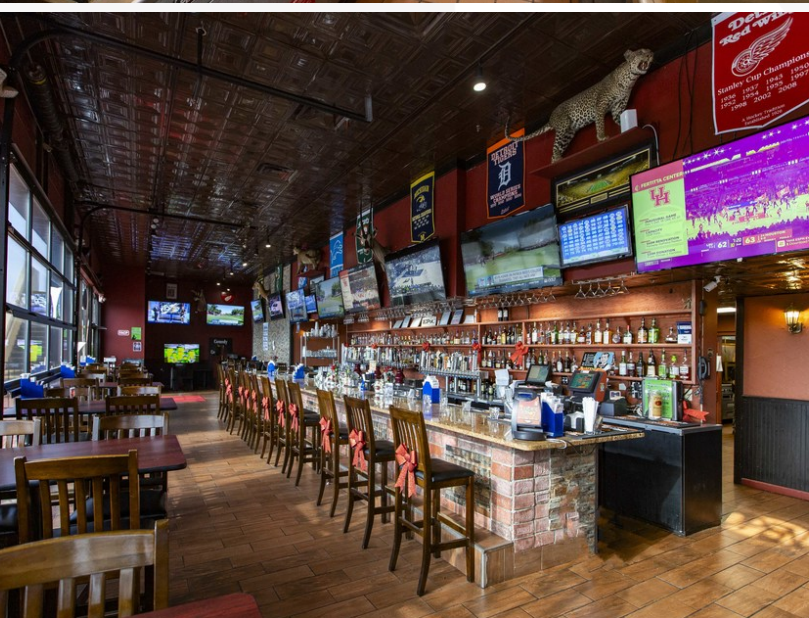
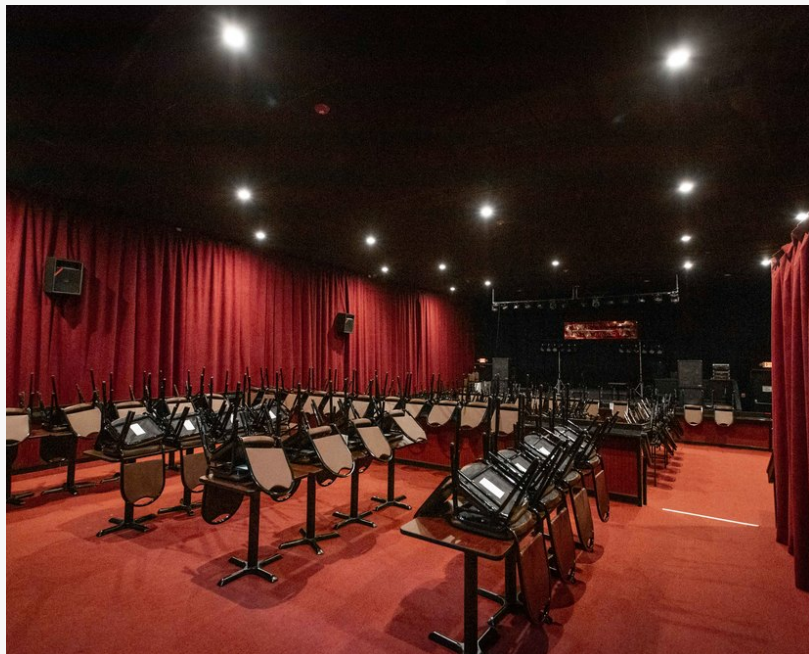
Stats	Population	Avg. HH Income
3 Miles	53,096	\$91,298
5 Miles	130,275	\$88,875

For more information

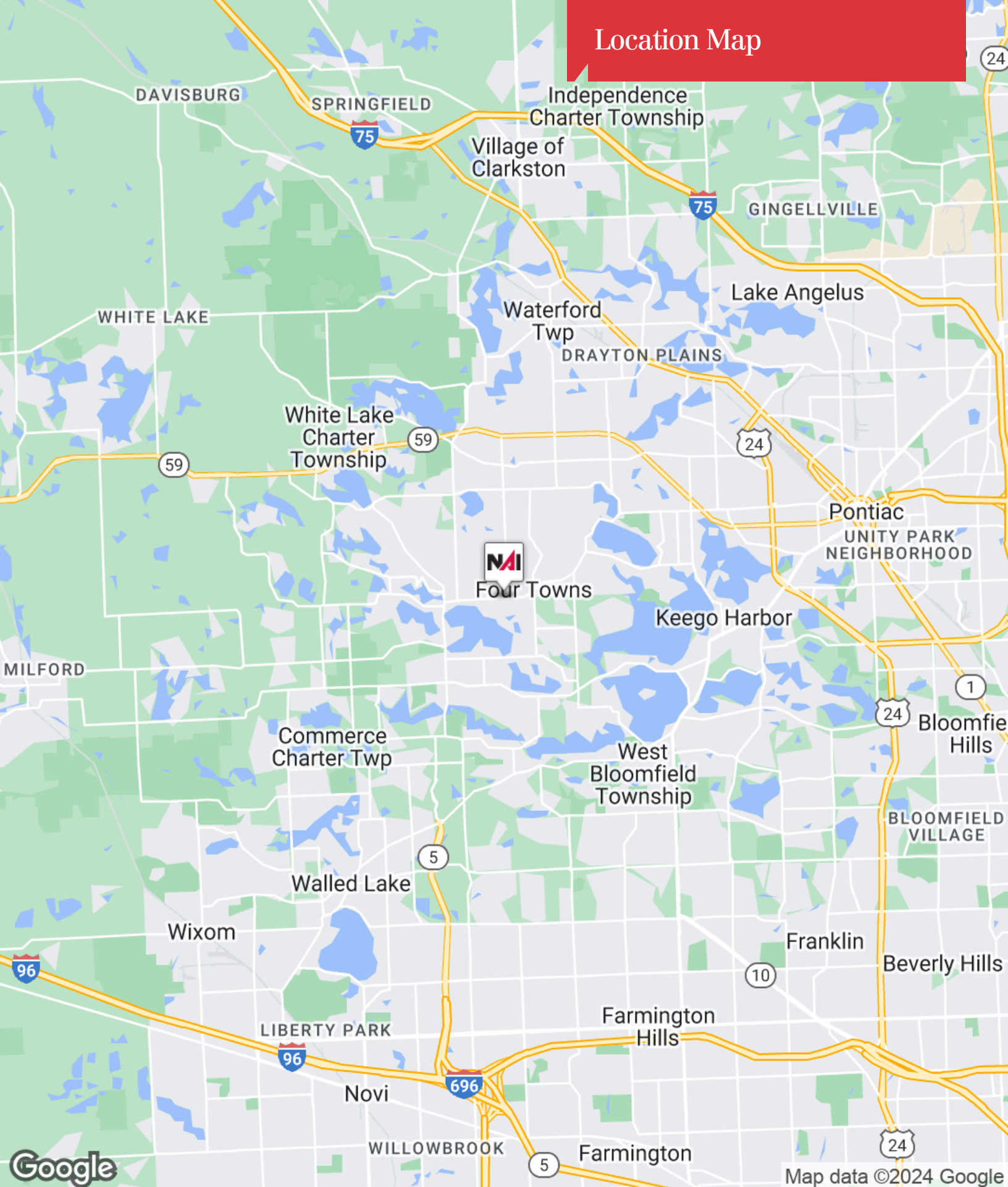
Brad Margolis

O: 248 351 4367
bmargolis@farbman.com

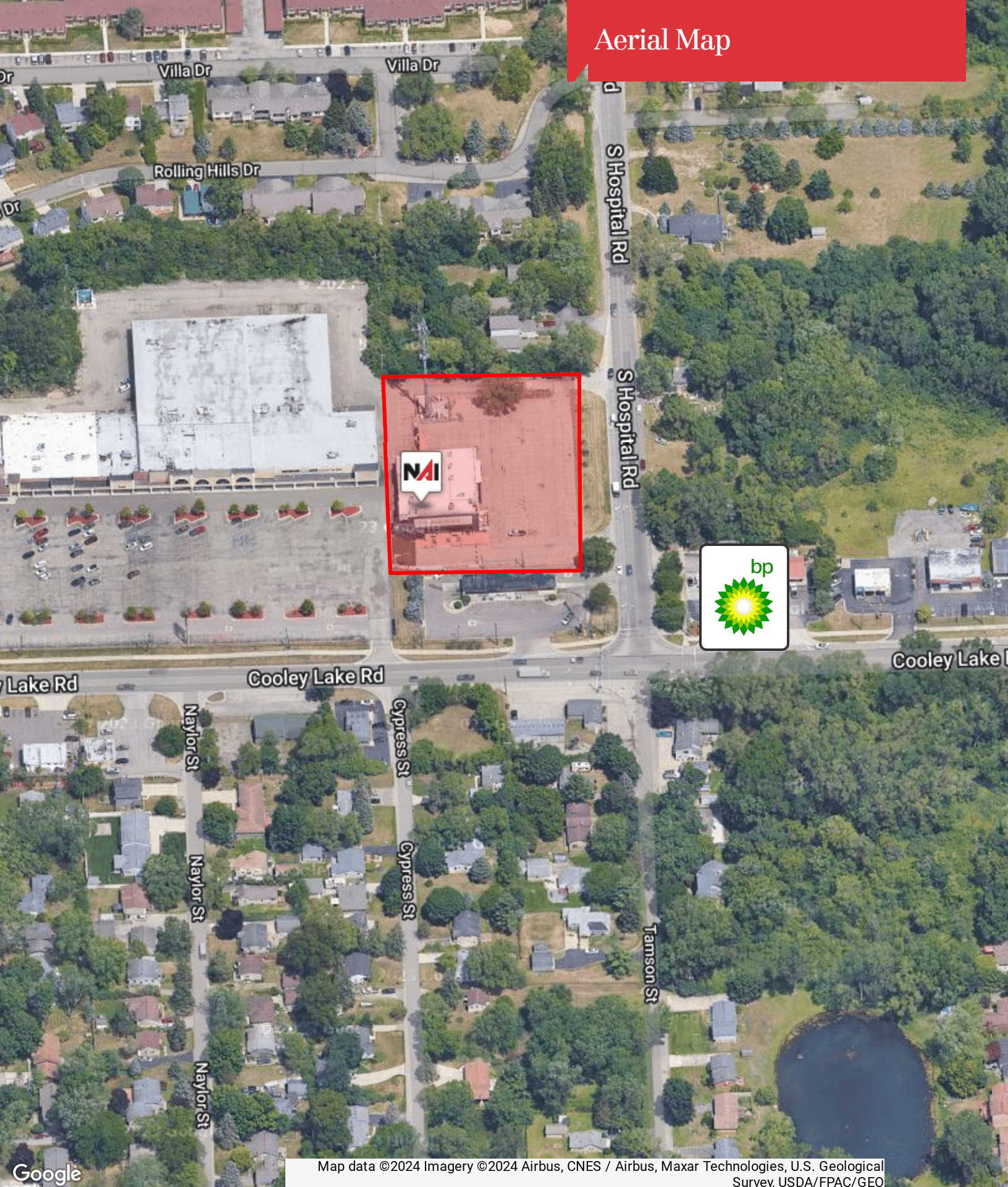
Additional Photos



Location Map



Aerial Map



Google

Map data ©2024 Imagery ©2024 Airbus, CNES / Airbus, Maxar Technologies, U.S. Geological Survey, USDA/FPAC/GEO

Retailer Map



Map data ©2024 Imagery ©2024 Airbus, CNES / Airbus, Landsat / Copernicus, Maxar Technologies, U.S. Geological Survey, USDA/FPAC/GEO