

# 2880 INDUSTRIAL BLVD.

BETHEL PARK, PA 15102

## PROPERTY SUMMARY



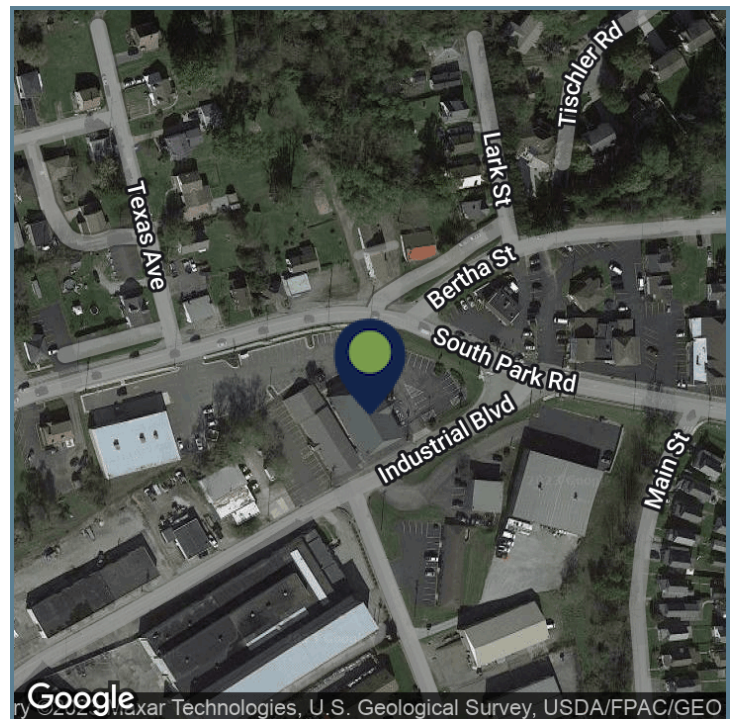
## PROPERTY DESCRIPTION

Check out this exciting leasing opportunity at 2880 INDUSTRIAL BLVD, located in the heart of Bethel Park, PA. With its strategic location, this property is the perfect choice for businesses looking to establish and expand their presence within Bethel Park. Reach out to our team for further information and arrange a showing.

## OFFERING SUMMARY

Lease Rate:	Currently Occupied   Inquire if Interested
Available SF:	
Building Size:	6,000 SF

SPACES	LEASE RATE			SPACE SIZE
DEMOGRAPHICS	1 MILE	3 MILES	5 MILES	
Total Households	4,046	31,105	92,601	
Total Population	9,204	77,693	223,874	



Presented By:

Legacy Commercial Property

847.904.9200

info@legacypro.com



# 2880 INDUSTRIAL BLVD.

BETHEL PARK, PA 15102

ADDITIONAL PHOTOS



Presented By:

Legacy Commercial Property

847.904.9200

info@legacypro.com



**LEGACY**  
COMMERCIAL PROPERTY

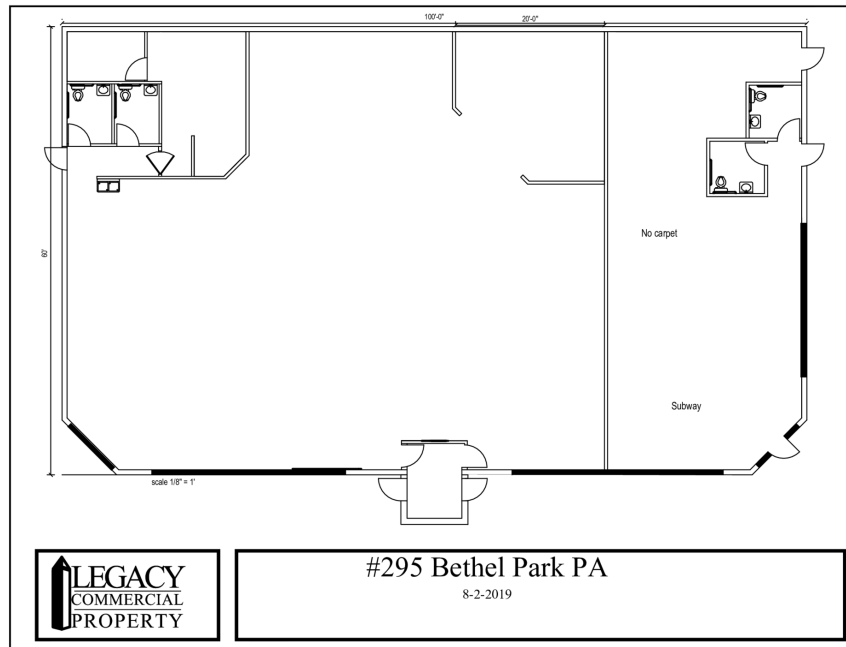
209 Powell Place  
Brentwood, TN 37027  
<http://legacypro.com>



# 2880 INDUSTRIAL BLVD.

BETHEL PARK, PA 15102

## SITE PLANS



Presented By:

Legacy Commercial Property

847.904.9200

info@legacypro.com



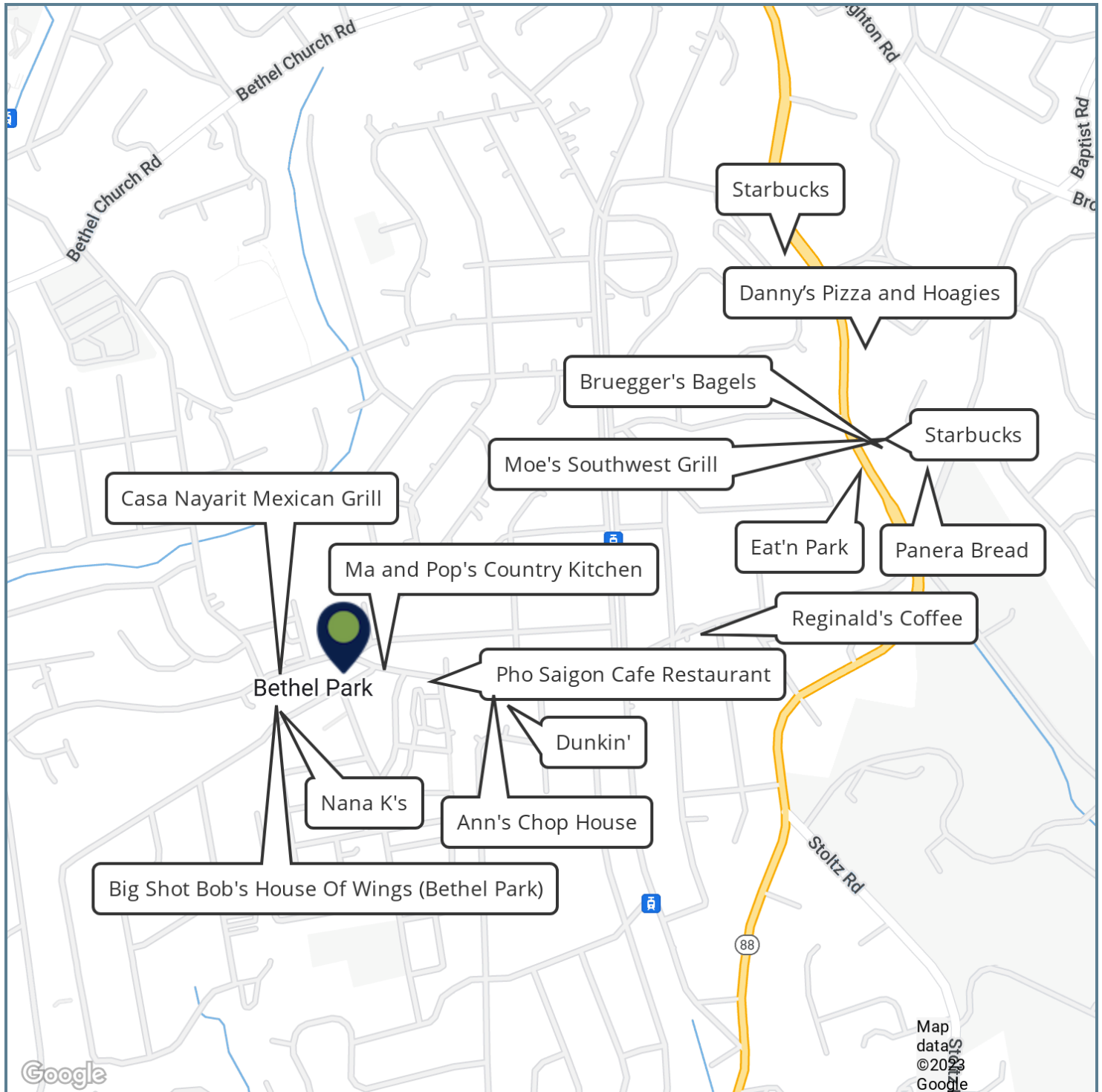
**LEGACY**  
COMMERCIAL PROPERTY

209 Powell Place  
Brentwood, TN 37027  
<http://legacypro.com>

# 2880 INDUSTRIAL BLVD.

BETHEL PARK, PA 15102

## RETAILER MAP



Presented By:

Legacy Commercial Property

847.904.9200

info@legacypro.com



**LEGACY**  
COMMERCIAL PROPERTY

209 Powell Place  
Brentwood, TN 37027  
<http://legacypro.com>