

# Sumter Infographic

5001 N Sumter Blvd, North Port, Florida, 34286 (0 - 3 miles)

5001 N Sumter Blvd, North Port, Florida, 34286

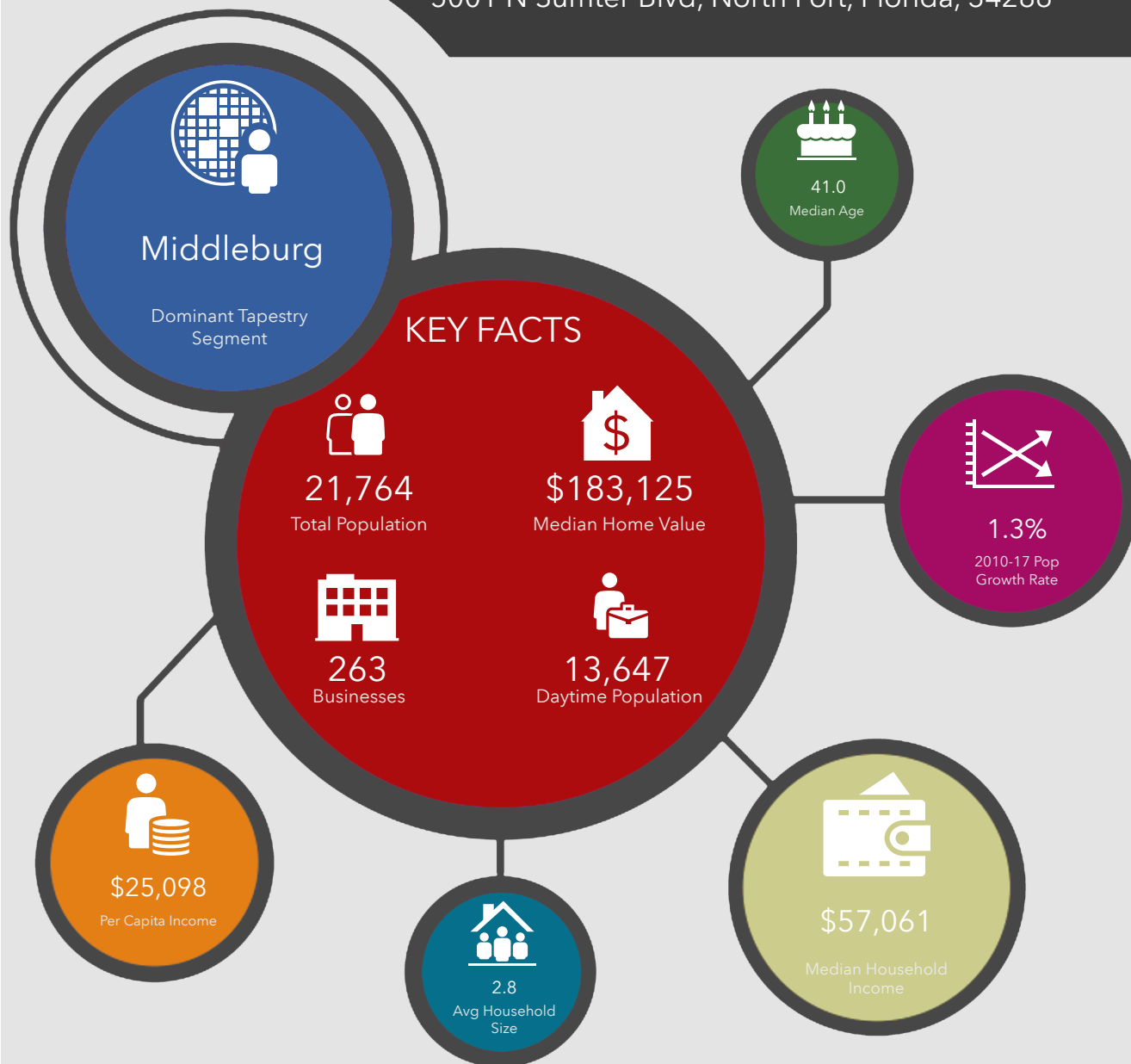
Ring band of 0 - 3 miles

Prepared by Esri

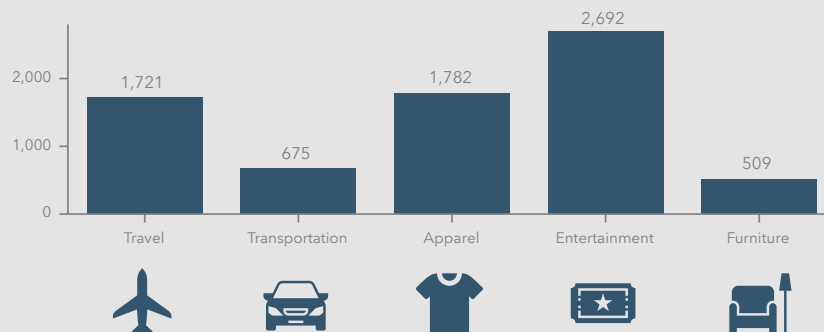
Latitude: 27.10150

Longitude: -82.20336

5001 N Sumter Blvd, North Port, Florida, 34286



## KEY SPENDING FACTS (\$)



© Esri 2018

Spending facts are average annual dollars per household

Source: This infographic contains data provided by Esri, Esri and Bureau of Labor Statistics, Esri and Infogroup. The vintage of the data is 2018.

# Sumter Infographic

5001 N Sumter Blvd, North Port, Florida, 34286 (3 - 5 miles)

5001 N Sumter Blvd, North Port, Florida, 34286

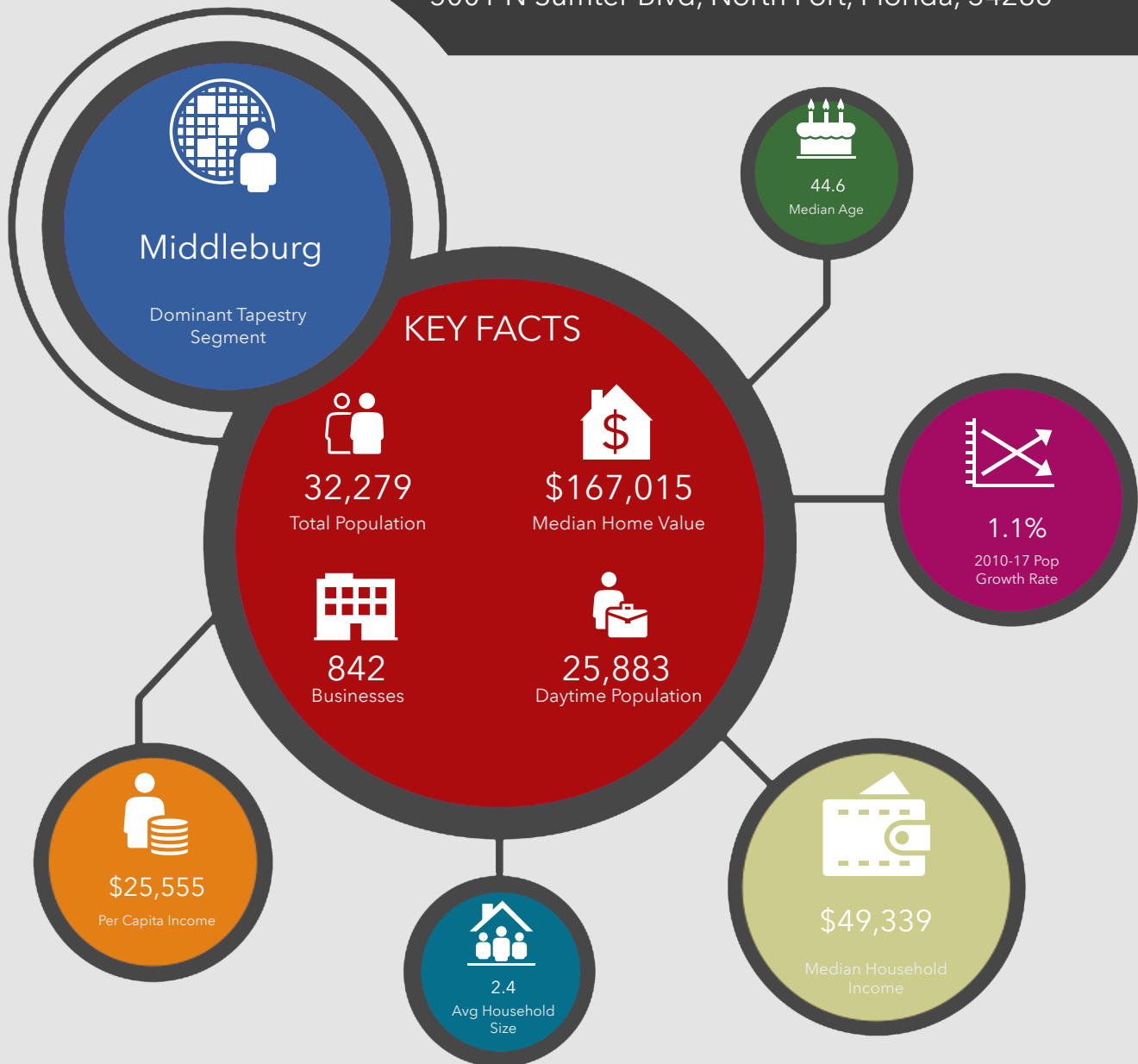
Ring band of 3 - 5 miles

Prepared by Esri

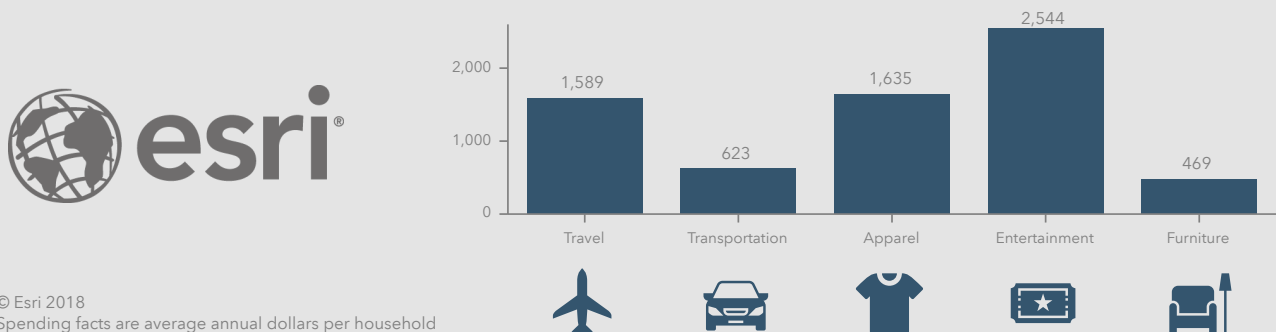
Latitude: 27.10150

Longitude: -82.20336

5001 N Sumter Blvd, North Port, Florida, 34286



## KEY SPENDING FACTS (\$)



© Esri 2018

Spending facts are average annual dollars per household

Source: This infographic contains data provided by Esri, Esri and Bureau of Labor Statistics, Esri and Infogroup. The vintage of the data is 2018.

# Sumter Infographic

5001 N Sumter Blvd, North Port, Florida, 34286 (5 - 10 miles)

5001 N Sumter Blvd, North Port, Florida, 34286

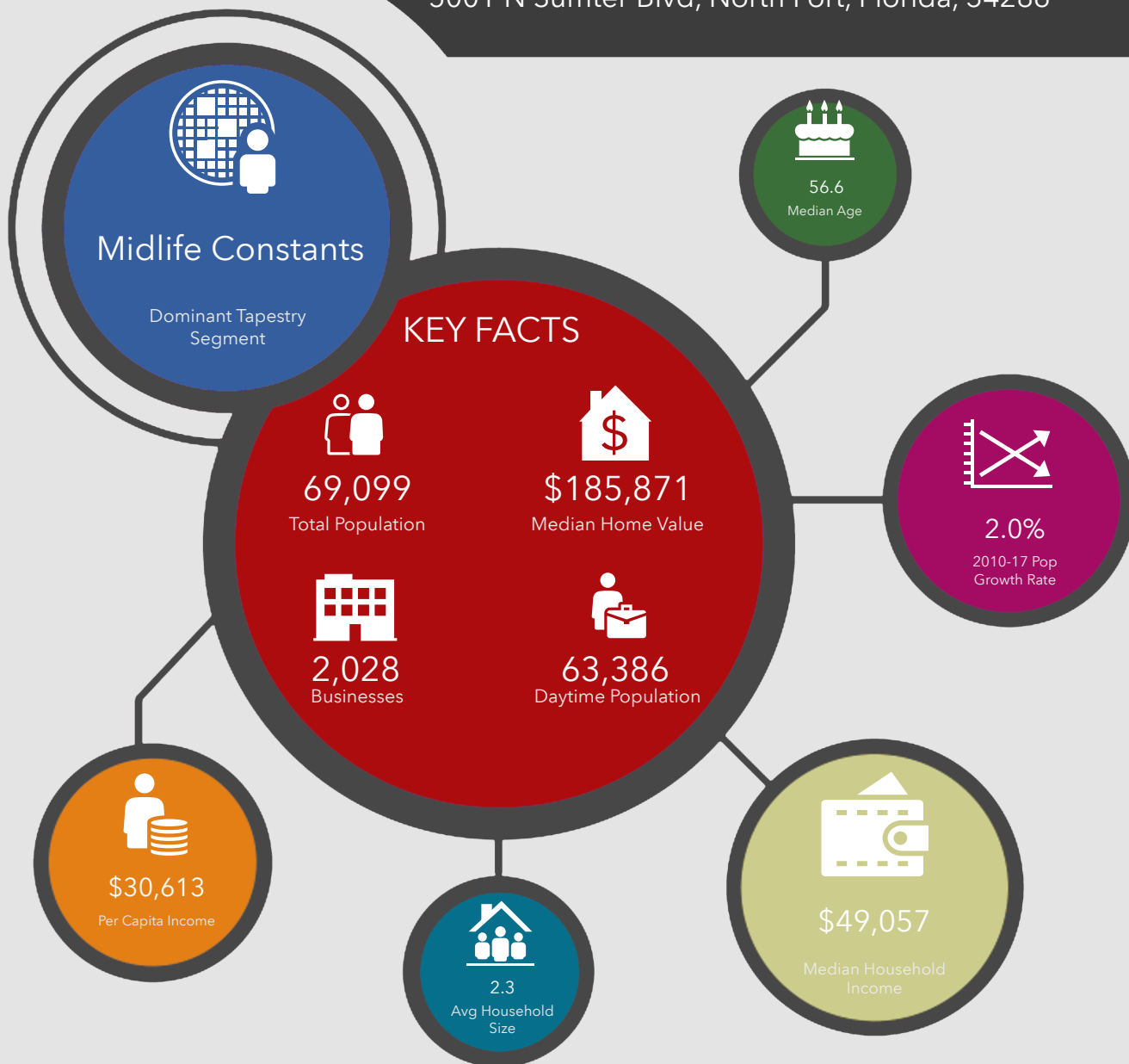
Ring band of 5 - 10 miles

Prepared by Esri

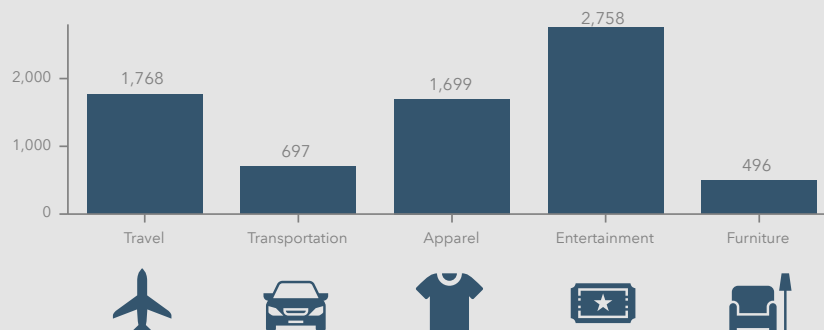
Latitude: 27.10150

Longitude: -82.20336

5001 N Sumter Blvd, North Port, Florida, 34286



## KEY SPENDING FACTS (\$)



© Esri 2018

Spending facts are average annual dollars per household

Source: This infographic contains data provided by Esri, Esri and Bureau of Labor Statistics, Esri and Infogroup. The vintage of the data is 2018.