

7700 42ND AVE.

7700 42ND AVE., NEW HOPE, MN 55427

PROPERTY SUMMARY



PROPERTY DESCRIPTION

Strongly visible on the northeast corner of 42nd Ave N and Winnetka Ave N with up to 3970 Sq Ft available

OFFERING SUMMARY

Asking Rent:	Currently Occupied Inquire if Interested
Available SF:	
Lot Size:	
Building Size:	5,400 SF

DEMOGRAPHICS	1 MILE	3 MILES	5 MILES
Total Households	4,820	41,600	107,199
Total Population	11,626	97,386	266,361
Average HH Income	\$85,235	\$89,487	\$89,158

Presented By:

Legacy Commercial Property

847.904.9200

info@legacypro.com

7700 42ND AVE.

7700 42ND AVE., NEW HOPE, MN 55427

ADDITIONAL PHOTOS



Presented By:

Legacy Commercial Property

847.904.9200

info@legacypro.com



LEGACY
COMMERCIAL PROPERTY

209 Powell Place
Brentwood, TN 37027
<http://legacypro.com>

7700 42ND AVE.

7700 42ND AVE., NEW HOPE, MN 55427

SITE PLANS



Presented By:

Legacy Commercial Property

847.904.9200

info@legacypro.com



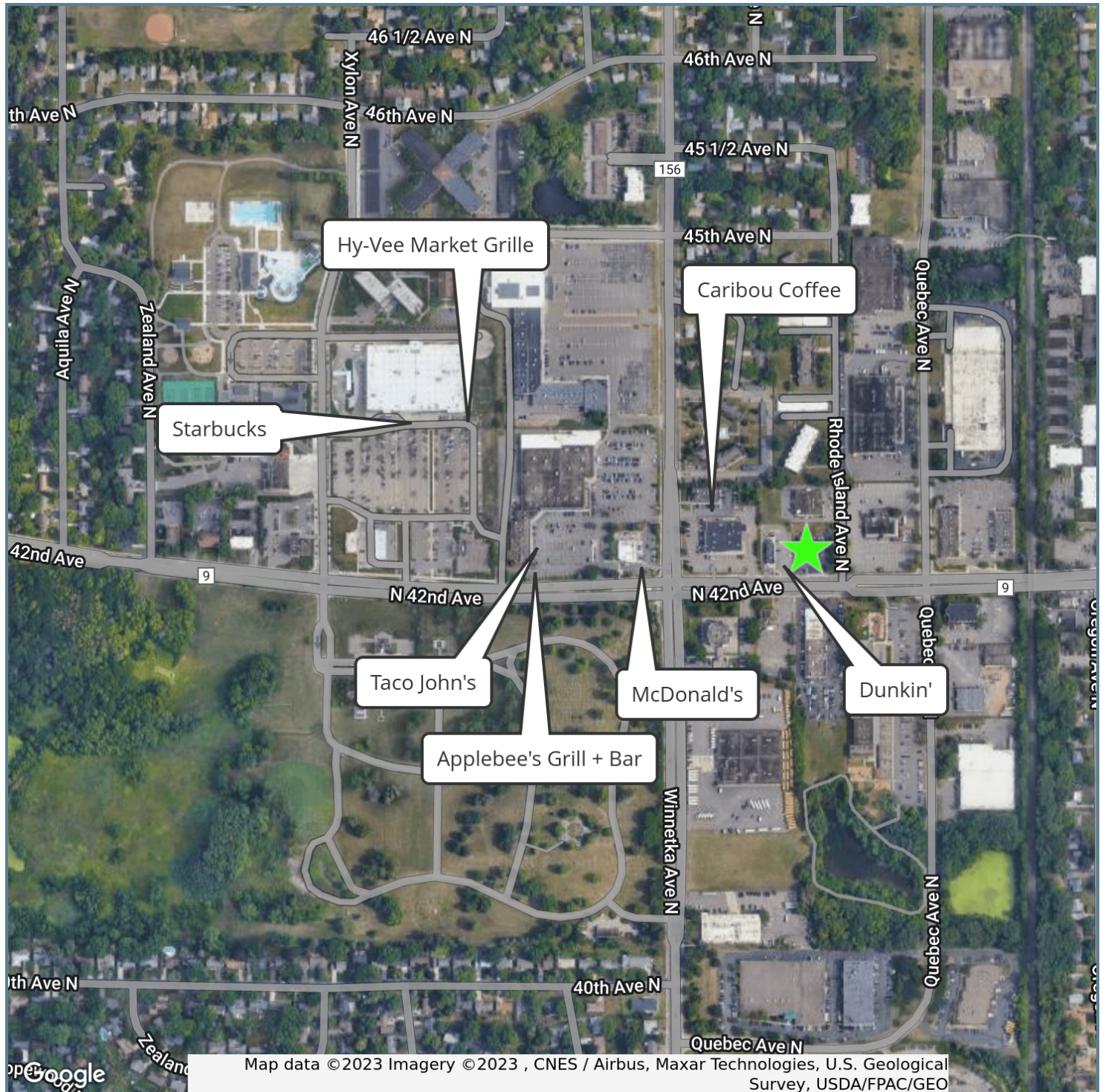
LEGACY
COMMERCIAL PROPERTY

209 Powell Place
Brentwood, TN 37027
<http://legacypro.com>

7700 42ND AVE.

7700 42ND AVE., NEW HOPE, MN 55427

RETAILER MAP



Presented By:

Legacy Commercial Property

847.904.9200

info@legacypro.com



LEGACY

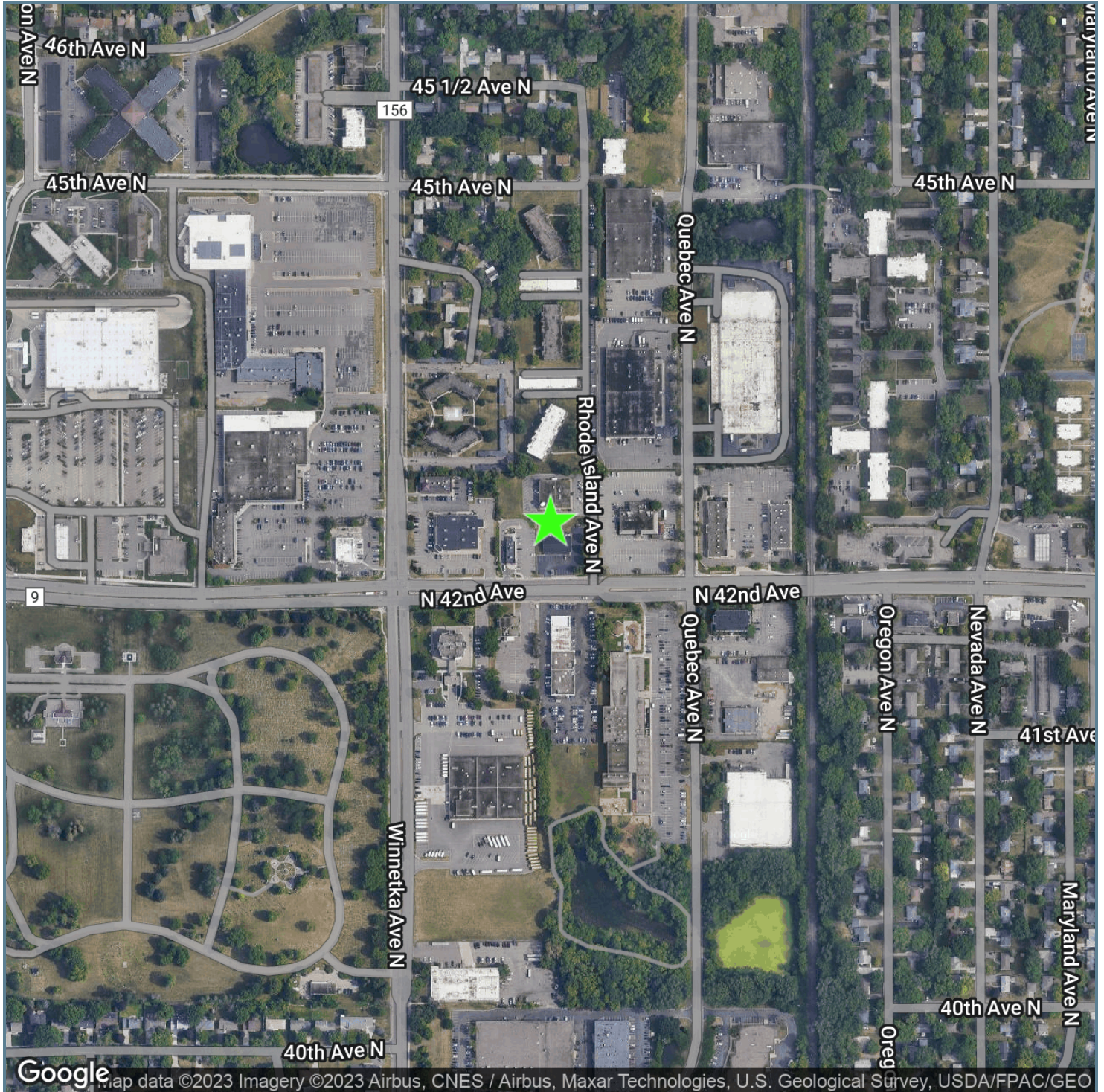
COMMERCIAL PROPERTY

209 Powell Place
Brentwood, TN 37027
<http://legacypro.com>

7700 42ND AVE.

7700 42ND AVE., NEW HOPE, MN 55427

LOCATION MAPS



Presented By:

Legacy Commercial Property

847.904.9200

info@legacypro.com



LEGACY
COMMERCIAL PROPERTY

209 Powell Place
Brentwood, TN 37027
<http://legacypro.com>