

900 E. 30TH ST.

900 E. 30TH ST., HUTCHINSON, KS 67502

PROPERTY SUMMARY



PROPERTY DESCRIPTION

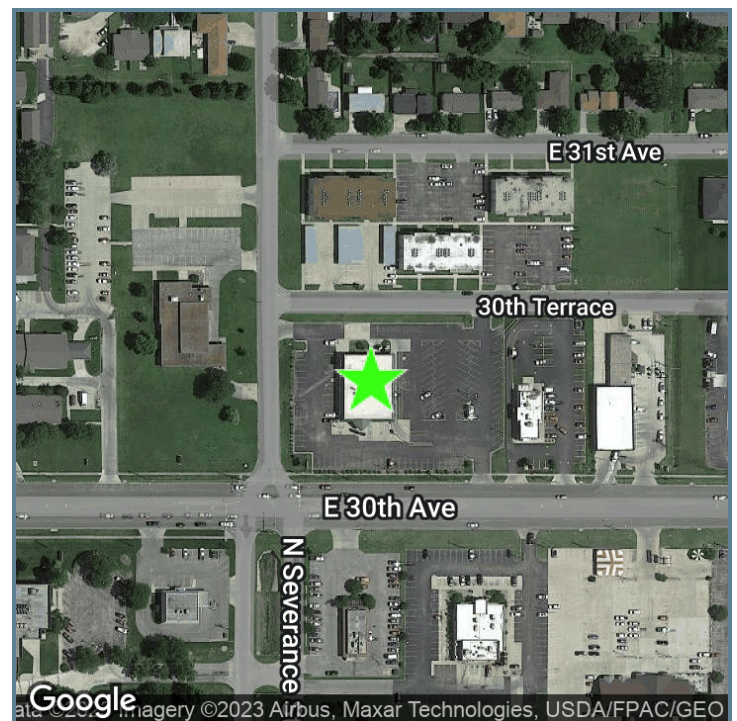
Strong visibility on the southeast corner of N Severance St and 30th Terrace with up to 6586 Sq Ft available

OFFERING SUMMARY

Lease Rate:	Negotiable
Available SF:	2,021 - 4,565 SF
Building Size:	8,127 SF

SPACES	LEASE RATE	SPACE SIZE
900 E 30th St	Negotiable	2,021 SF
900 E 30th St	Negotiable	4,565 SF

DEMOGRAPHICS	1 MILE	3 MILES	5 MILES
Total Households	3,337	16,896	20,497
Total Population	6,883	35,863	44,729
Average HH Income	\$68,451	\$57,834	\$58,816



Presented By:

Legacy Commercial Property

847.904.9200

info@legacypro.com

900 E. 30TH ST.

900 E. 30TH ST., HUTCHINSON, KS 67502

ADDITIONAL PHOTOS



Presented By:

Legacy Commercial Property

847.904.9200

info@legacypro.com



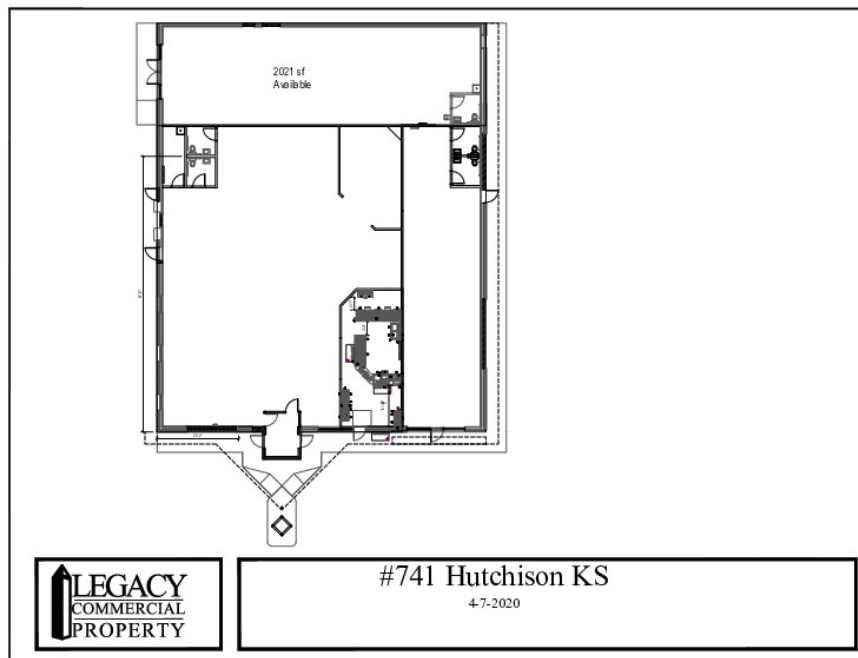
LEGACY
COMMERCIAL PROPERTY

209 Powell Place
Brentwood, TN 37027
<http://legacypro.com>

900 E. 30TH ST.

900 E. 30TH ST., HUTCHINSON, KS 67502

SITE PLANS



Presented By:

Legacy Commercial Property

847.904.9200

info@legacypro.com



LEGACY
COMMERCIAL PROPERTY

209 Powell Place
Brentwood, TN 37027
<http://legacypro.com>

900 E. 30TH ST.

900 E. 30TH ST., HUTCHINSON, KS 67502

RENT ROLL

TENANT NAME	UNIT NUMBER	UNIT SIZE (SF)	LEASE START	LEASE END	ANNUAL RENT	% OF GLA	PRICE PER SF/YR
Vacant	A	2,021			\$0	24.87	\$0.00
Vacant	B	4,565			\$0	56.17	\$0.00
Jimmy John's	C	1,541			\$0	18.96	\$0.00
Totals/Averages		8,127			\$0		\$0.00

Presented By:

Legacy Commercial Property

847.904.9200

info@legacypro.com



LEGACY
COMMERCIAL PROPERTY

209 Powell Place
Brentwood, TN 37027
<http://legacypro.com>