



FOR LEASE

■ 561 NW Lake Whitney Place

561 NW Lake Whitney Place

Port St. Lucie, FL 34986

PROPERTY OVERVIEW

Space is a single story professional office. The floor plan has entrance reception area and spacious conference/showroom area, two private offices, one restroom and a very nice kitchenette/breakroom. Lots of upgrades including vinyl plank flooring, chair rail and crown molding.

LOCATION OVERVIEW

Lake Whitney Medical and Professional offices are conveniently located on the corner of NW Lake Whitney Place and Peacock Blvd in the heart of St Lucie West. The property is well-located with access to I-95 (exit 121) less than 1 mile away and only minutes from the Florida Turnpike (exit 142). This property is well-positioned to service the surrounding residential subdivisions of St Lucie West and Fort Pierce.

OFFERING SUMMARY

Available Size:

1,592 SF

Zoning:

Commercial Services

Utilities:

St Lucie West Services District

LEASE RATE

\$19.50/SF/NNN



**CHRISTINE M.
SKURKA**

VICE PRESIDENT/BROKER

Mobile 772.359.7199

skurka@slccommercial.com

772.220.4096 | slccommercial.com



SLC Commercial
Realty & Development



The information contained herein has been obtained from sources believed to be reliable, but no warranty or representation, expressed or implied, is made. All sizes and dimensions are approximate. Any prospective buyer should exercise prudence and verify independently all significant data and property information. This is NOT an offer of sub-agency or co-brokerage.

Property Details

561 NW LAKE WHITNEY PLACE

FOR LEASE

LEASE RATE

\$19.50/SF/NNN

Building Information

Building Size	7,510 SF
Tenancy	Multiple
Year Built	2007
Gross Leasable Area	1,592 SF
Construction Status	Existing
Condition	Excellent
Free Standing	Yes
Construction Description	CBS
Building Class	A
Number Of Floors	1

Location Information

Building Name	561 NW Lake Whitney Place
Street Address	561 NW Lake Whitney Place
City, State, Zip	Port St. Lucie, FL 34986
County/Township	Saint Lucie

Parking & Transportation

Street Parking	Yes
Parking Ratio	5.0

Property Details

Property Type	Office - Professional
Property Subtype	Office Building
Lot Size	15 Acres
Utilities	St Lucie West Services District
Maintenance	\$8.27 SF CAM (2023)

Zoning / Land Use Details

Zoning	Commercial Services
Permitted Use	See Below

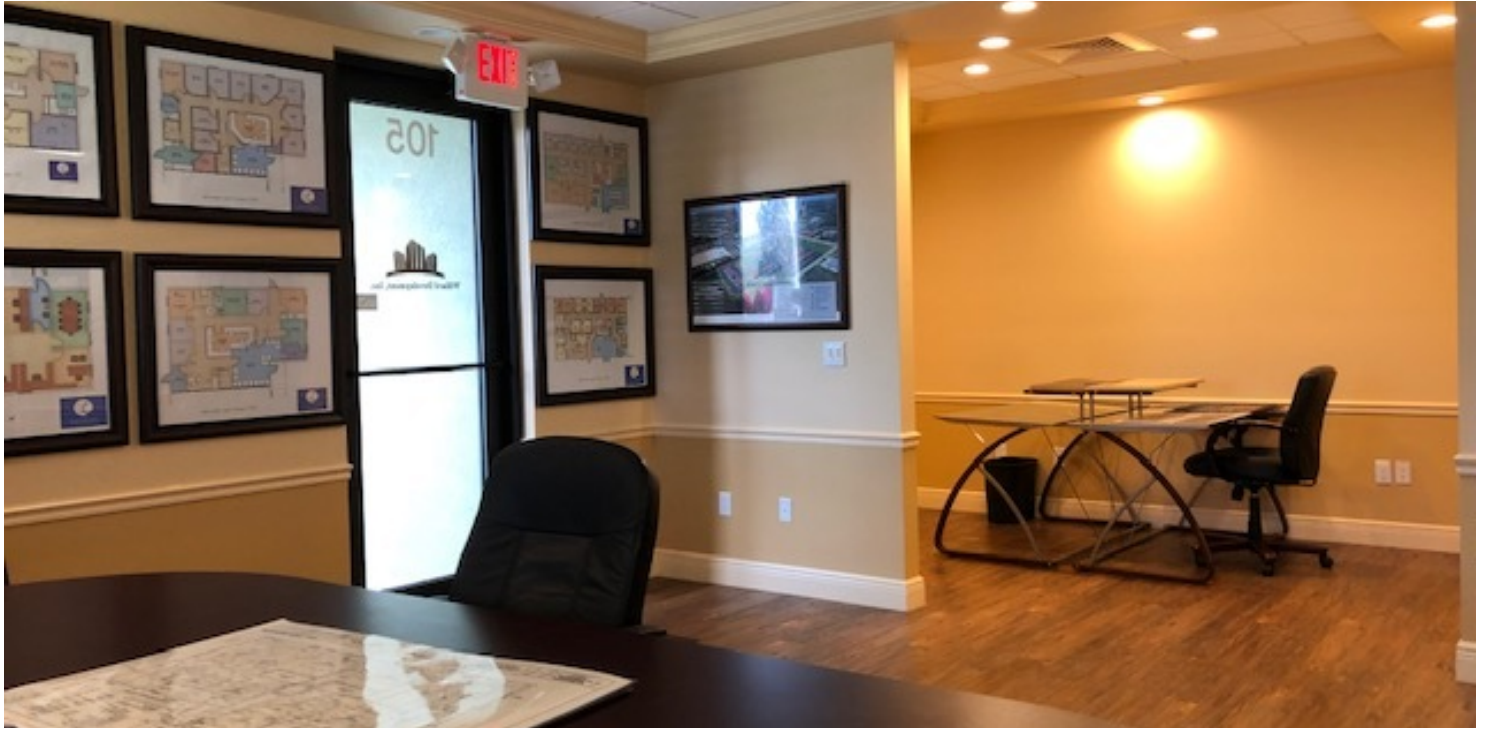
[Click Here For Permitted Uses](#)



Additional Photos

561 NW LAKE WHITNEY PLACE

FOR LEASE



Additional Photos

561 NW LAKE WHITNEY PLACE

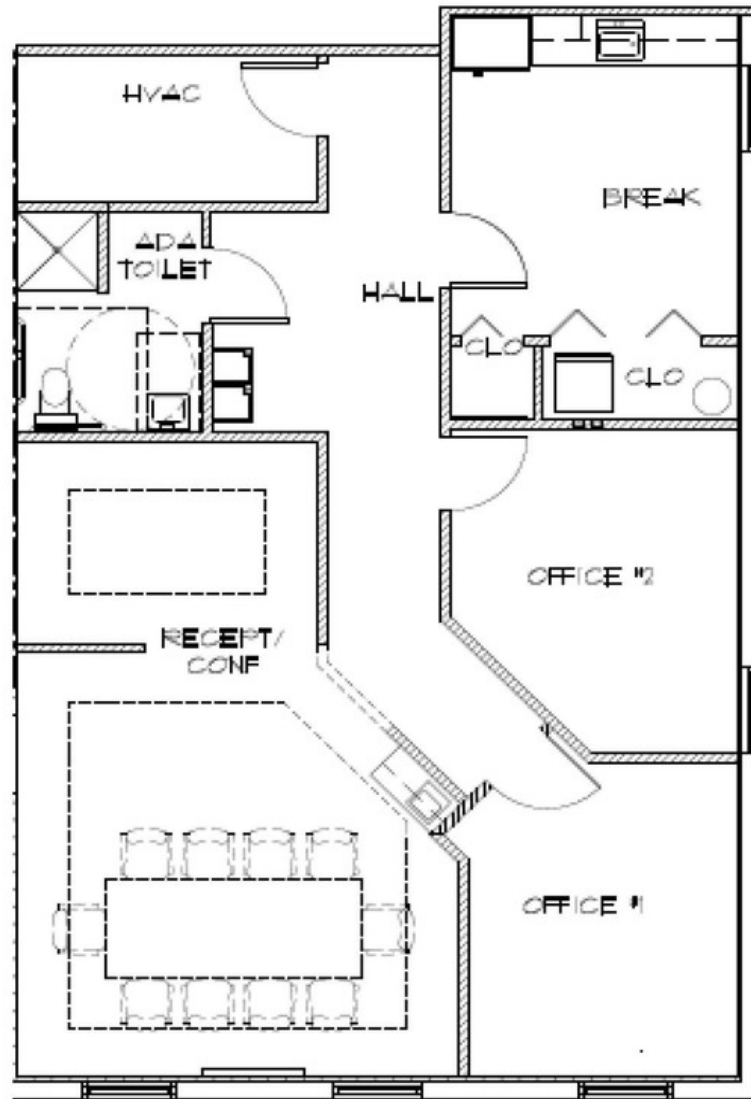
FOR LEASE



Floor Plan

561 NW LAKE WHITNEY PLACE

FOR LEASE



Lake Whitney Phase II, LLC

Suite 105

GSF 1,592



Retailer Map

561 NW LAKE WHITNEY PLACE

FOR LEASE

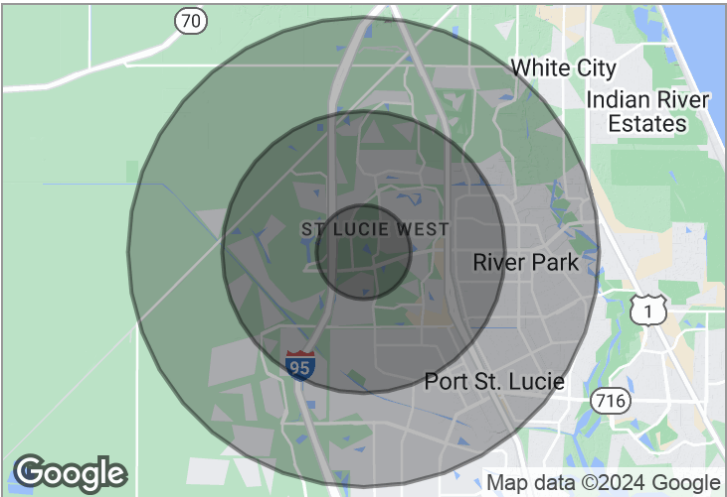
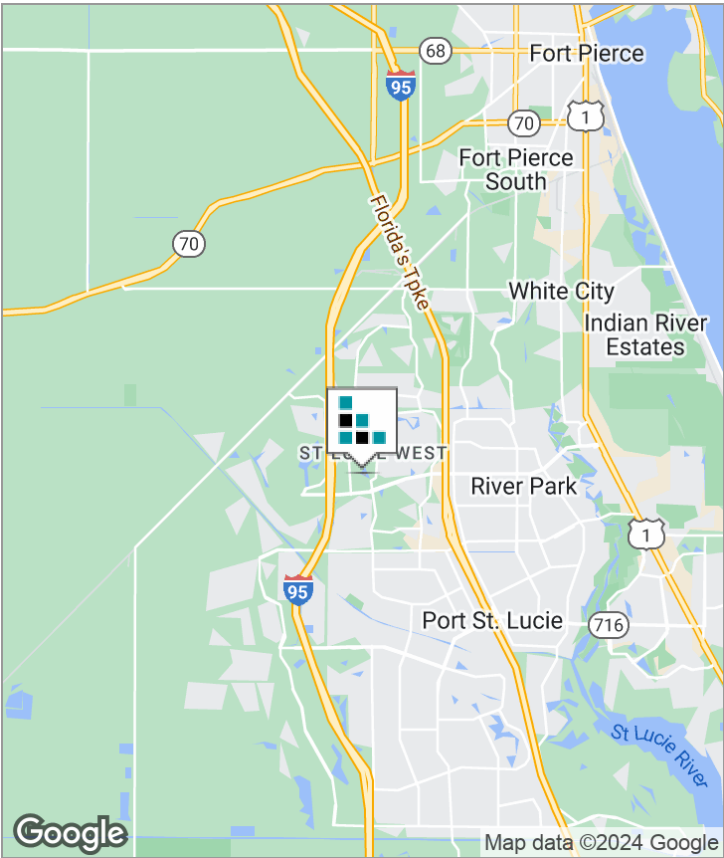
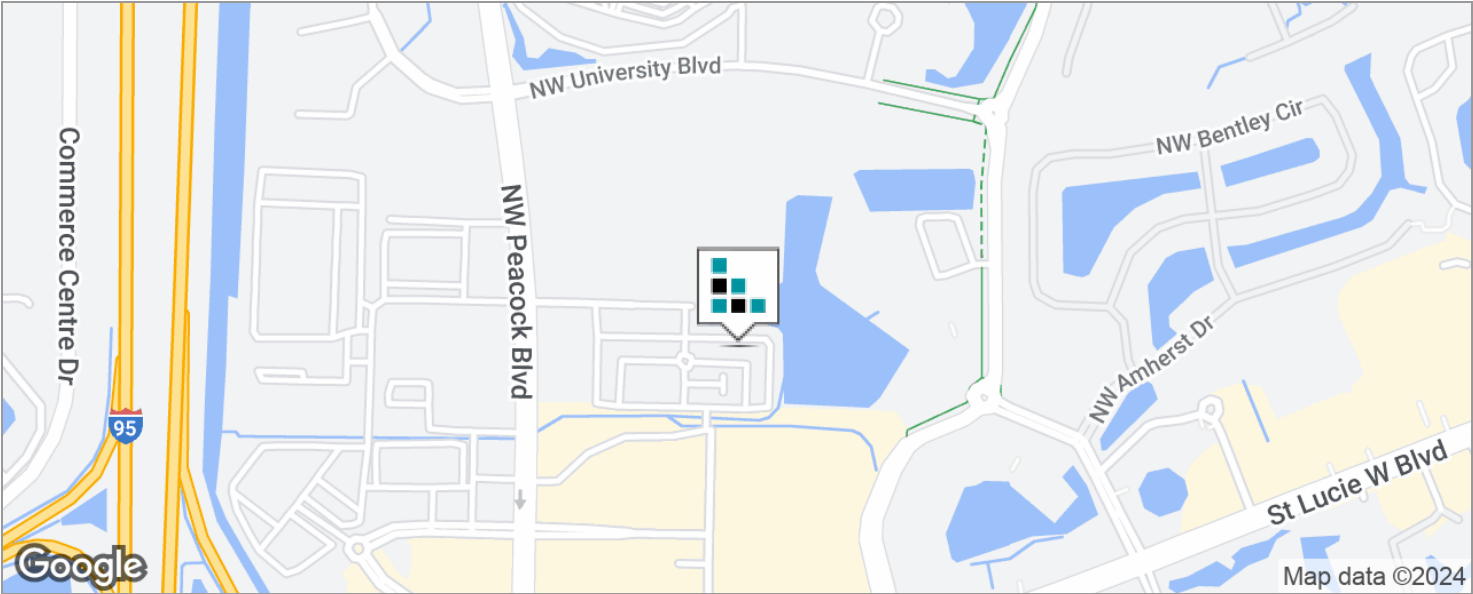


Demographics Map

561 NW LAKE WHITNEY PLACE



FOR LEASE



DEMOGRAPHICS

	1 MILE	3 MILES	5 MILES
Total Population	4,288	38,438	97,565
Total Households	1,807	14,724	35,464
Average HH Income	\$63,818	\$64,651	\$63,800
Average Age	48.9	43.4	40.6

The information contained herein has been obtained from sources believed to be reliable, but no warranty or representation, expressed or implied, is made. All sizes and dimensions are approximate. Any prospective buyer should exercise prudence and verify independently all significant data and property information. This is NOT an offer of sub-agency or co-brokerage.

Disclaimer

561 NW LAKE WHITNEY PLACE

FOR LEASE

This presentation package has been prepared by the company representing the property for informational purposes only and does not purport to contain all information necessary to reach a purchase decision.

The information herein has been given by the Owner or other sources believed to be reliable, but it has not necessarily been independently verified by the Company representing the property and neither its accuracy nor its completeness is guaranteed.

This information is subject to errors, omissions, changes, prior sale or withdrawal without notice by the Company representing the property and does not constitute a recommendation, endorsement or advice as to the value for the purchase of any property. Each prospective lessee or purchaser is to rely upon his/her own investigation, evaluation and judgment as to the advisability of leasing or purchasing the property.

Furthermore, any financial information and calculations presented in this analysis are believed to be accurate, but are not guaranteed and are intended for the purposes of projection and analysis only. The user of this financial information contained herein should consult a tax specialist concerning his/her particular circumstances before making any investment.

