

280

Essex Fwy

River Rd

River Rd

Passaic River

SITE

W Mt Pleasant Ave (Route 10)

Tower Rd

Old Rd

W Mt Pleasant Ave

Walnut St

FOR LEASE

Highly Visible Land For Lease On Route 10

576-586 W Mt Pleasant Ave | Livingston, NJ 07039



Highly Visible Land For Lease On Route 10

576-586 W Mt Pleasant Ave | Livingston, NJ 07039



3.88 Acres
Available

Immediate
POSSESSION

Contact
Broker
Rate

JOIN NEIGHBORING TENANTS



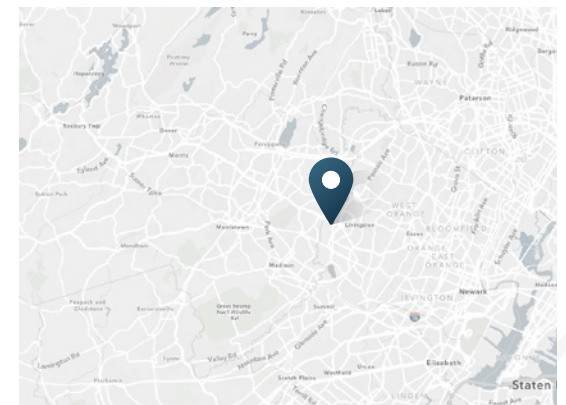
ABOUT THE PROPERTY

- Excellent visibility on Route 10 in the heart of the Livingston/East Hanover retail market
- Excellent access with close proximity to two jughandles
- Zoned for a wide variety of retail uses
- Available immediately

CONTACTS

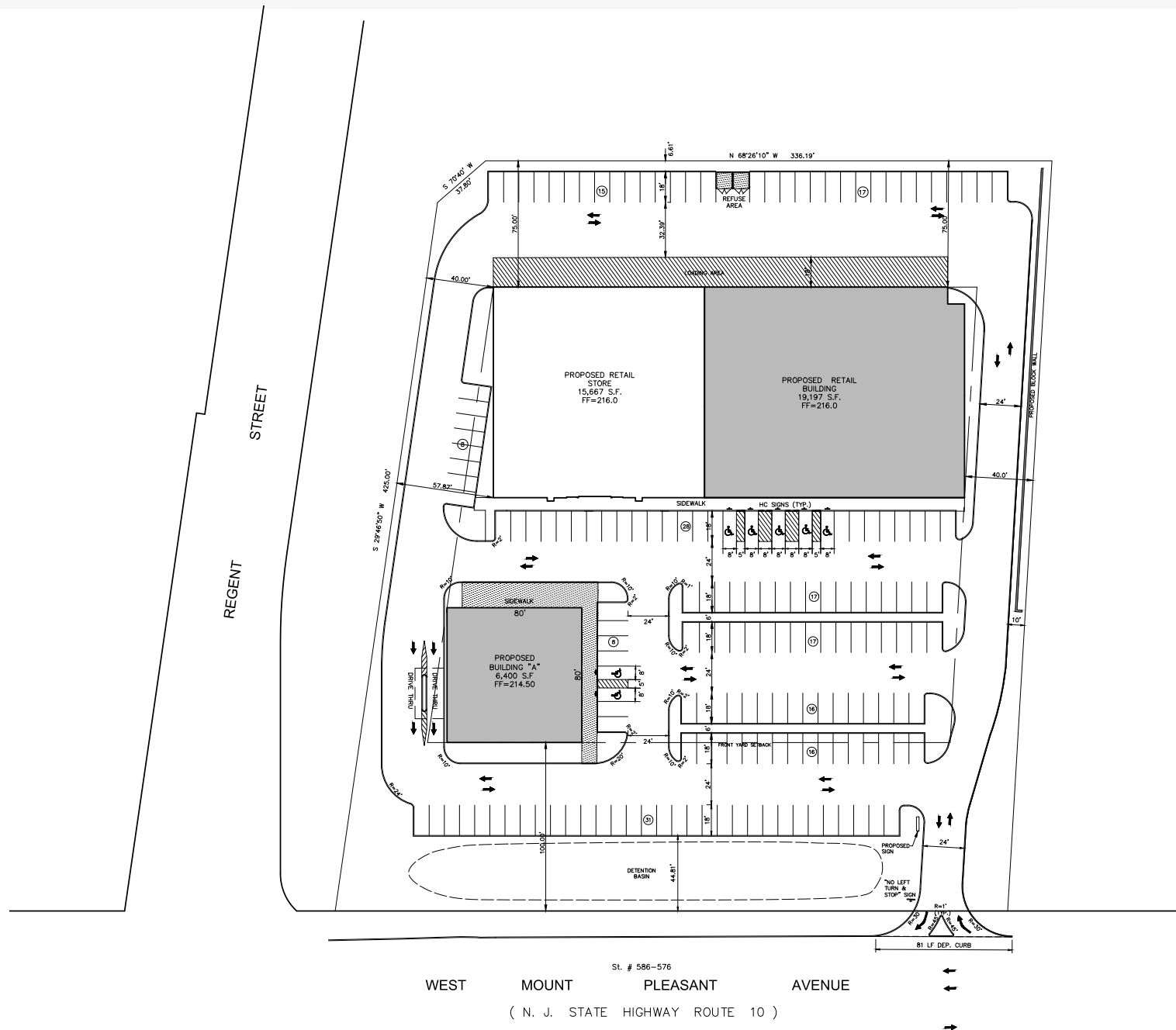
DAVID WIRTH
484.883.7537 | david.wirth@srsre.com

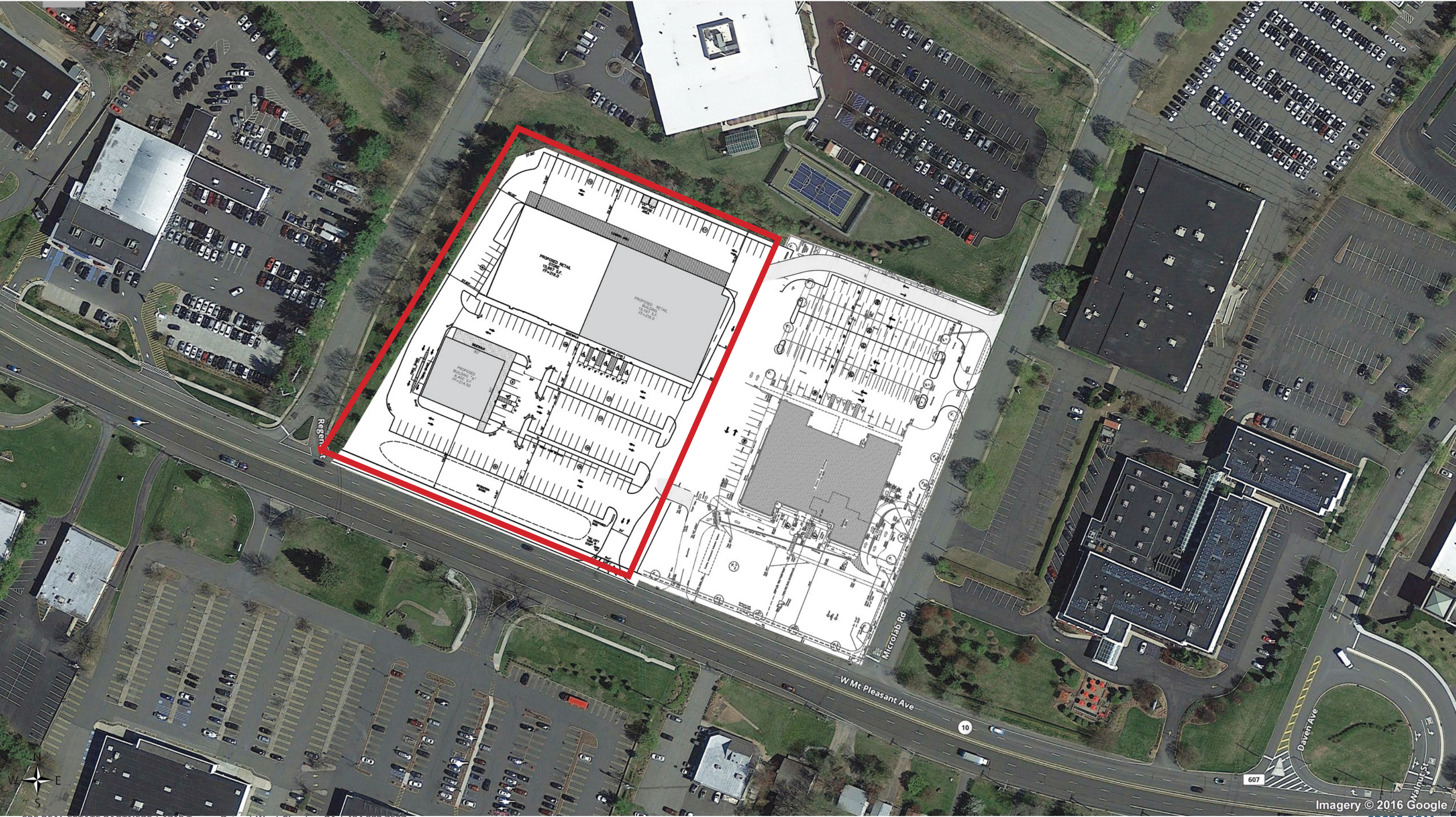
Hugh Kelly
212.710.5252 | hugh.kelly@srsre.com



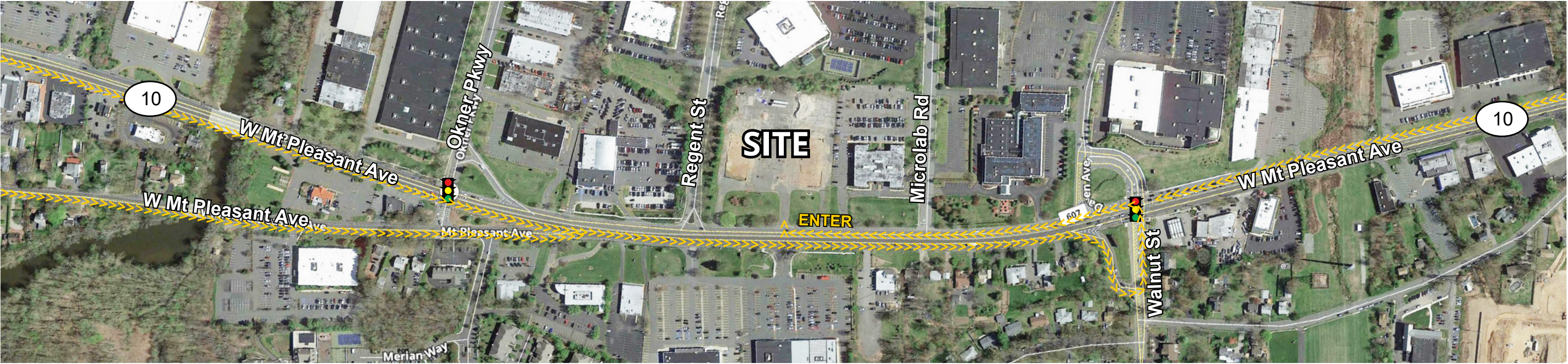
Highly Visible Land For Lease On Route 10

576-586 W Mt Pleasant Ave | Livingston, NJ 07039





ENTERING LOCATION



EXITING LOCATION



Market Aerial

Livingston / East Hanover, NJ



Highly Visible Land For Lease On Route 10

576-586 W Mt Pleasant Ave | Livingston, NJ 07039



DEMOGRAPHIC HIGHLIGHTS

1 MILE

4,406	6,927	\$261,286	1,680
Population	Total Daytime Population	Average Household Income	Total Households

3 MILES

49,551	73,216	\$240,267	17,522
Population	Total Daytime Population	Average Household Income	Total Households

5 MILES

155,118	201,718	\$230,822	54,678
Population	Total Daytime Population	Average Household Income	Total Households

SOURCE

