

REDEVELOPMENT SITE - WESTSIDE BELTLINE | ± 0.48 ACRES

1061 & 1063 DONALD LEE HOLLOWELL ATLANTA, GA 30318

FOR SALE

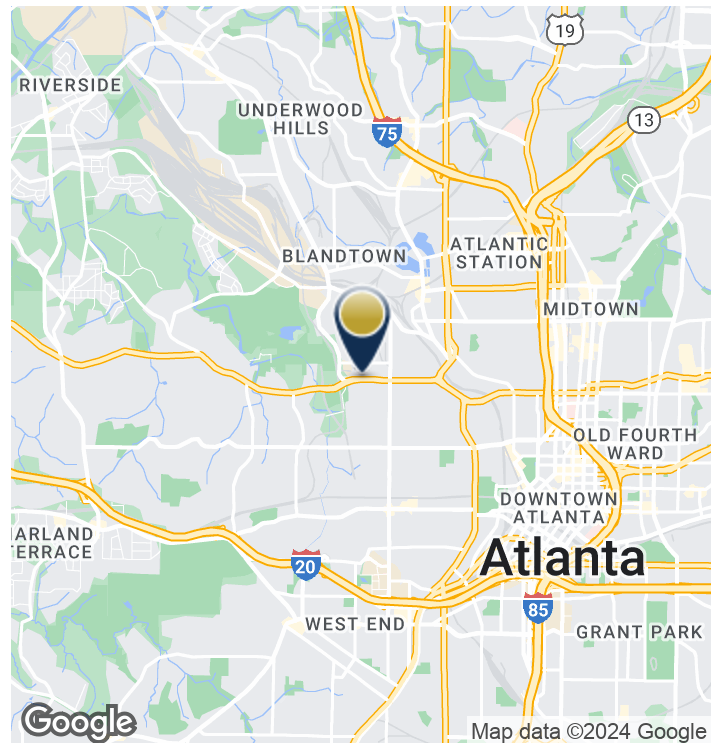


PROPERTY HIGHLIGHTS

- ± 0.48 acre corner site
- Offered for sale at \$799,000
- Situated on proposed Westside BeltLine
- Currently zoned I-2
- Situated in the BeltLine Overlay District and Upper Westside Livable Centers Initiative (LCI)
- Proposed for a transit stop for BeltLine rail and traffic light at Finley Ave
- Many new area developments proposed nearby
- All utilities available
- Parcel IDs: 1401130003062, 14011300030853 & 14011300030846

LOCATION OVERVIEW

This property is located 3.4 miles northwest of Downtown Atlanta, on Hollowell Parkway, and near the new Quarry Yards development. It is situated near proposed mixed-use upcoming developments including: housing, hospitality, retail/restaurants and office.



JOHN DEYONKER | 404-876-1640 x142 | JohnD@BullRealty.com

[BULLREALTY.COM](https://www.bullrealty.com)

Information contained herein may have been provided by the seller, landlord or other outside sources. While deemed reliable, it may be estimated, projected, limited in scope and is subject to change or inaccuracies. Pertinent information should be independently confirmed prior to lease or purchase offer or within an applicable due diligence period.

REDEVELOPMENT SITE - WESTSIDE BELTLINE | ± 0.48 ACRES | Georgia | 1of3

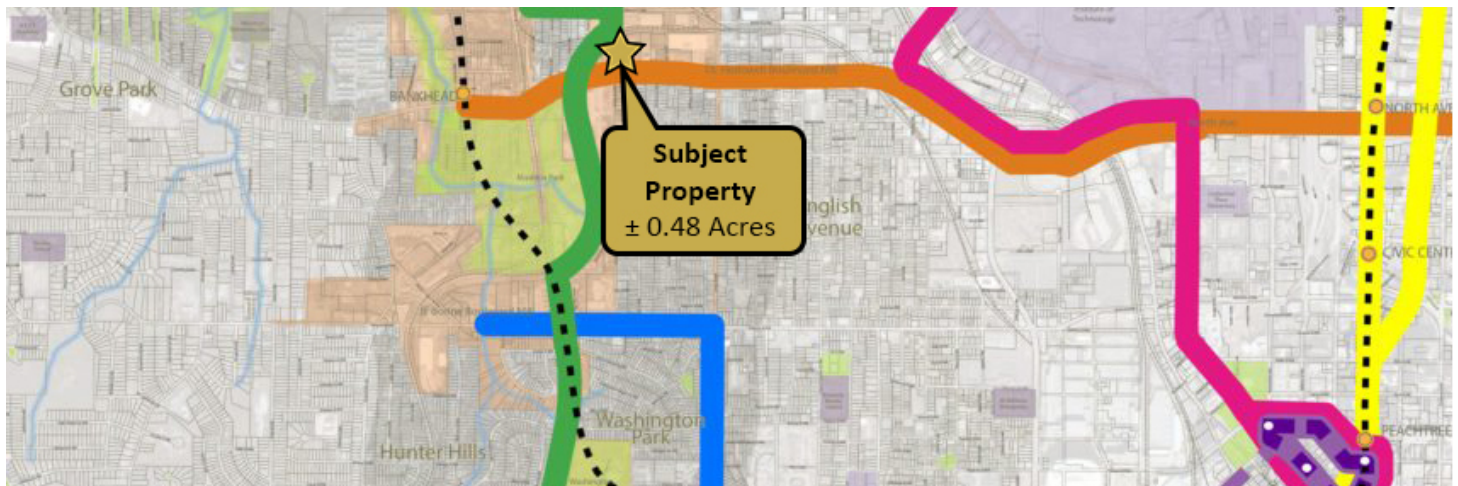
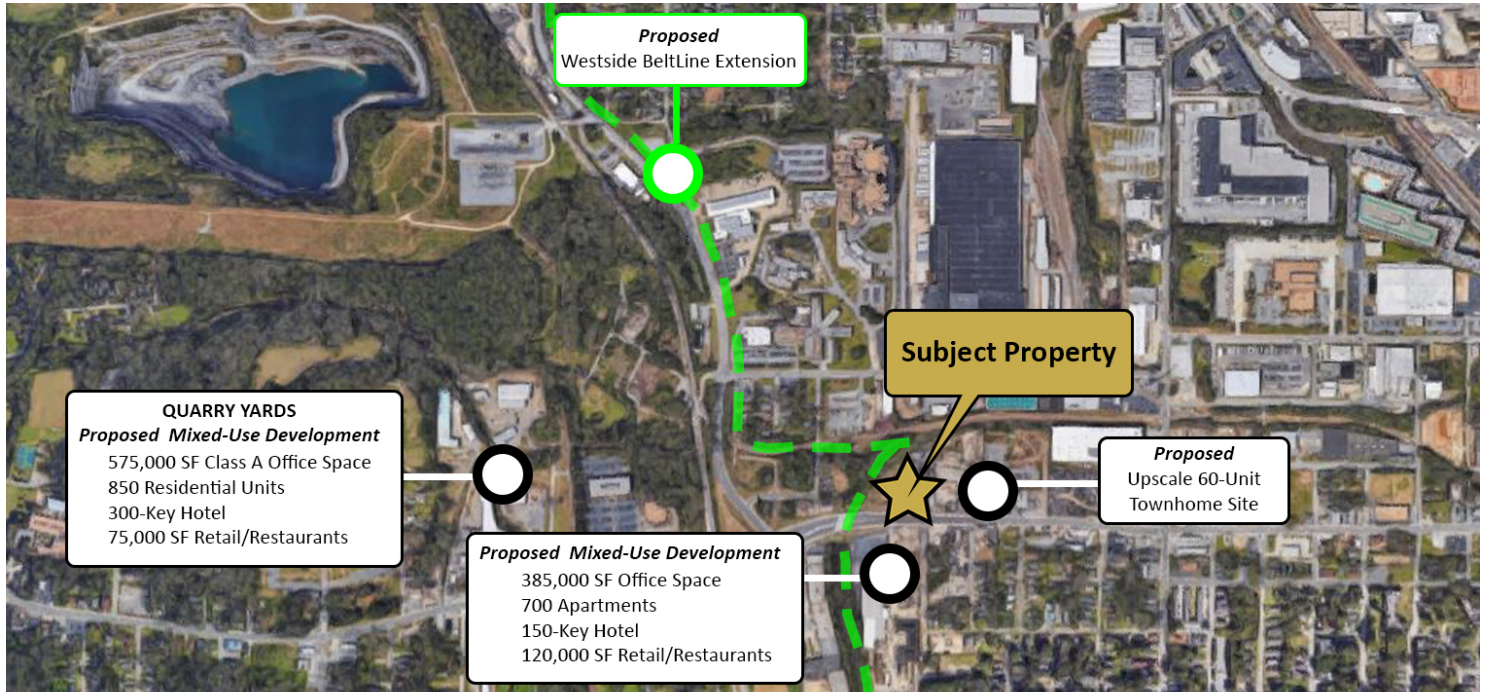
REDEVELOPMENT SITE - WESTSIDE BELTLINE | ± 0.48 ACRES

1061 & 1063 DONALD LEE HOLLOWELL

ATLANTA, GA 30318

FOR SALE

REDEVELOPMENT SITE - WESTSIDE BELTLINE | ± 0.48 ACRES | Georgia | 20f3



Streetcar System Plan	
—	BeltLine Loop
—	Crosstown Loop
—	Crosstown Midtown Line
—	Crosstown Peachtree Line
—	Crosstown Crecent Line
—	Crosstown Capital Loop
—	Downtown Streetcar
...	MARTA Rail System
—	Tax Allocation District
—	Area of Interest
—	Parks + Greenspace
—	Schools/Institution



JOHN DEYONKER | 404-876-1640 x142 | JohnD@BullRealty.com

BULLREALTY.COM

Information contained herein may have been provided by the seller, landlord or other outside sources. While deemed reliable, it may be estimated, projected, limited in scope and is subject to change or inaccuracies. Pertinent information should be independently confirmed prior to lease or purchase offer or within an applicable due diligence period.

REDEVELOPMENT SITE - WESTSIDE BELTLINE | ± 0.48 ACRES

1061 & 1063 DONALD LEE HOLLOWELL

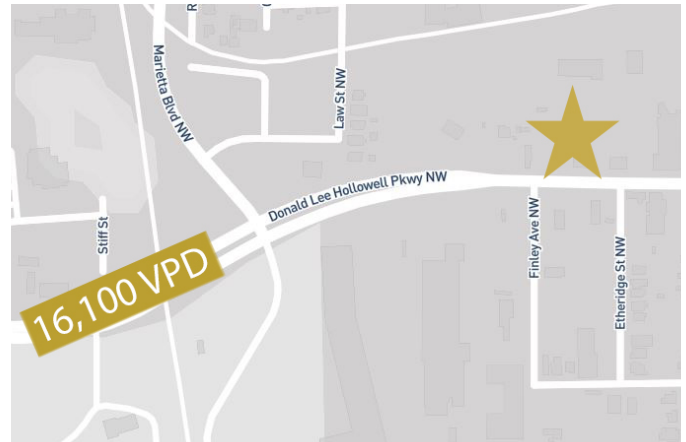
ATLANTA, GA 30318

DEMOGRAPHICS

	1 Mile	2 Miles	3 Miles
Total Households:	3,713	16,676	47,516
Total Population:	14,904	60,292	127,221
Average HH Income:	\$37,304	\$44,108	\$58,744
Traffic Counts:	16,100- VPD on Donald L. Hollowell		

*Data derived from ESRI

TRAFFIC COUNT MAP



IN THE AREA

