

1121 MAIN ST.

1121 MAIN ST., KEOKUK, IA 52632

PROPERTY SUMMARY



PROPERTY DESCRIPTION

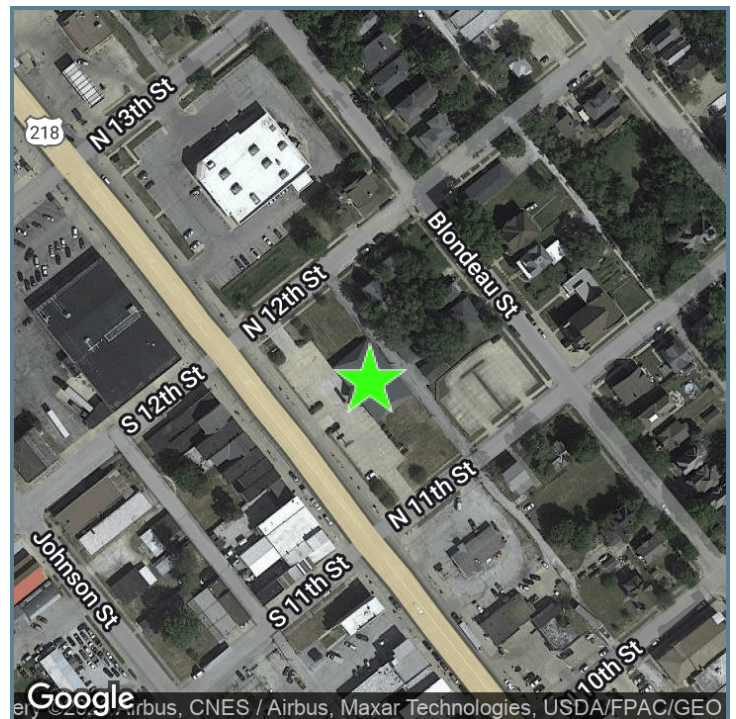
Strong visibility on the northeast corner of Main St and N 11th St with up to 6,000 Sq Ft available

OFFERING SUMMARY

Lease Rate:	Negotiable
Number of Units:	2
Available SF:	1,430 - 4,579 SF
Lot Size:	1 Acres
Building Size:	6,009 SF

SPACES	LEASE RATE	SPACE SIZE
1121 Main St	Negotiable	1,430 SF
1121 Main St	Negotiable	4,579 SF

DEMOGRAPHICS	1 MILE	3 MILES	5 MILES
Total Households	3,280	6,285	8,013



Presented By:

Legacy Commercial Property

847.904.9200

info@legacypro.com

1121 MAIN ST.

1121 MAIN ST., KEOKUK, IA 52632

ADDITIONAL PHOTOS



Presented By:

Legacy Commercial Property

847.904.9200

info@legacypro.com



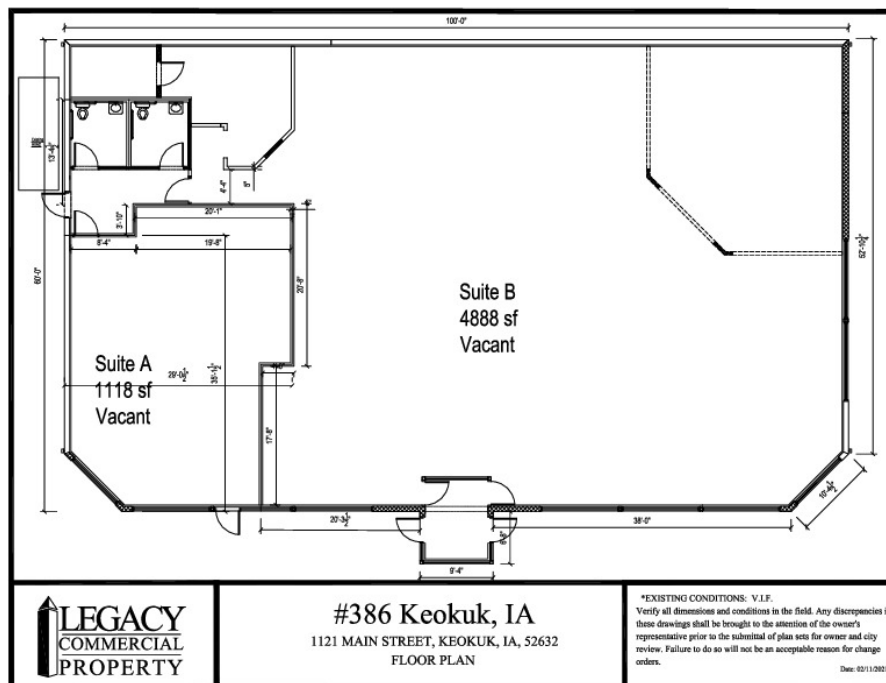
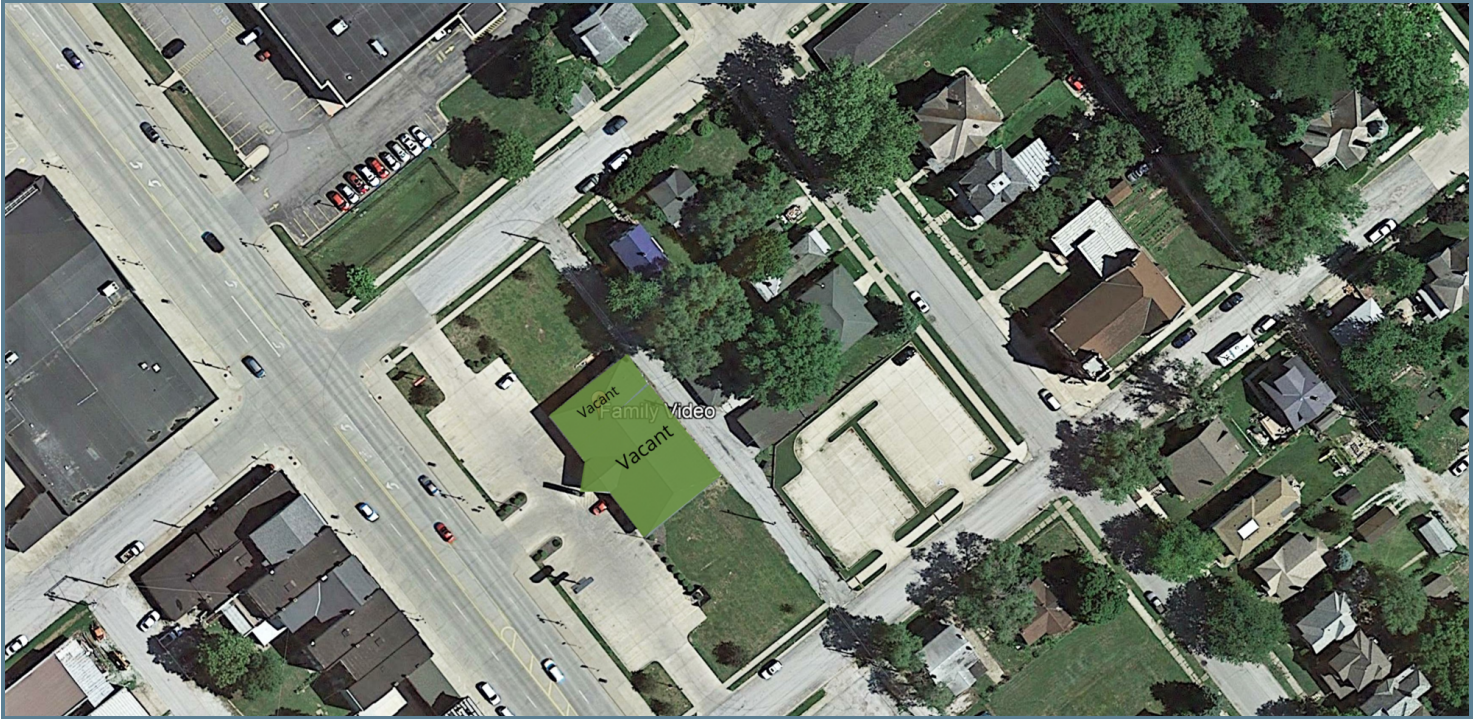
LEGACY
COMMERCIAL PROPERTY

209 Powell Place
Brentwood, TN 37027
<http://legacypro.com>

1121 MAIN ST.

1121 MAIN ST., KEOKUK, IA 52632

SITE PLANS



Presented By:

Legacy Commercial Property

847.904.9200

info@legacypro.com



LEGACY
COMMERCIAL PROPERTY

209 Powell Place
Brentwood, TN 37027
<http://legacypro.com>

1121 MAIN ST.

1121 MAIN ST., KEOKUK, IA 52632

RENT ROLL

TENANT NAME	UNIT NUMBER	UNIT SIZE (SF)
Vacant	A	1,430
Vacant	B	4,579
Totals/Averages		6,009

Presented By:

Legacy Commercial Property

847.904.9200

info@legacypro.com



LEGACY

COMMERCIAL PROPERTY

209 Powell Place
Brentwood, TN 37027
<http://legacypro.com>