



**COLDWELL  
BANKER  
COMMERCIAL**  
FISHER GROUP

# FOR SALE

## WASECA - ELM AVE - 1800 W

\$300,000

1800 W. Elm Avenue  
Waseca, MN 56093

### FEATURES

- Located on high traffic roadway
- Plenty of room for a large building and ample parking
- Easy access to major highway

### AREA

Located in Waseca, MN this property sits along old Hwy 14 and offers excellent visibility and access. Close proximity to the new four lane Hwy 14, railway, and municipal airport. Seller is willing to subdivide.



### OFFICE

Cate DeBates  
507 676 4327  
cate@cbcfishergroup.com

©2023 Coldwell Banker. All Rights Reserved. Coldwell Banker Commercial® and the Coldwell Banker Commercial logos are trademarks of Coldwell Banker Real Estate LLC. The Coldwell Banker® System is comprised of company owned offices which are owned by a subsidiary of Anywhere Advisors LLC and franchised offices which are independently owned and operated. The Coldwell Banker System fully supports the principles of the Equal Opportunity Act.

**COLDWELL BANKER COMMERCIAL  
FISHER GROUP**

201 North Riverfront Drive, Suite 230, Mankato, MN 56001  
507.625.4715

CBCWORLDWIDE.COM



## WASECA - ELM AVE - 1800 W

1800 W. Elm Avenue, Waseca, MN 56093

SALE



### OFFERING SUMMARY

Sale Price: \$300,000

Available SF:

Lot Size: 6.0 Acres

Zoning: Commercial

Price / SF: \$1.15

### PROPERTY OVERVIEW

Located in Waseca, MN this property sits along old Hwy 14 and offers excellent visibility and access. Close proximity to the new four lane Hwy 14, railway, and municipal airport. Seller is willing to subdivide.

### PROPERTY HIGHLIGHTS

- Located on high traffic roadway
- Plenty of room for a large building and ample parking
- Easy access to major highway

CBCWORLDWIDE.COM

Cate DeBates  
507 676 4327  
cate@cbcfishergroup.com

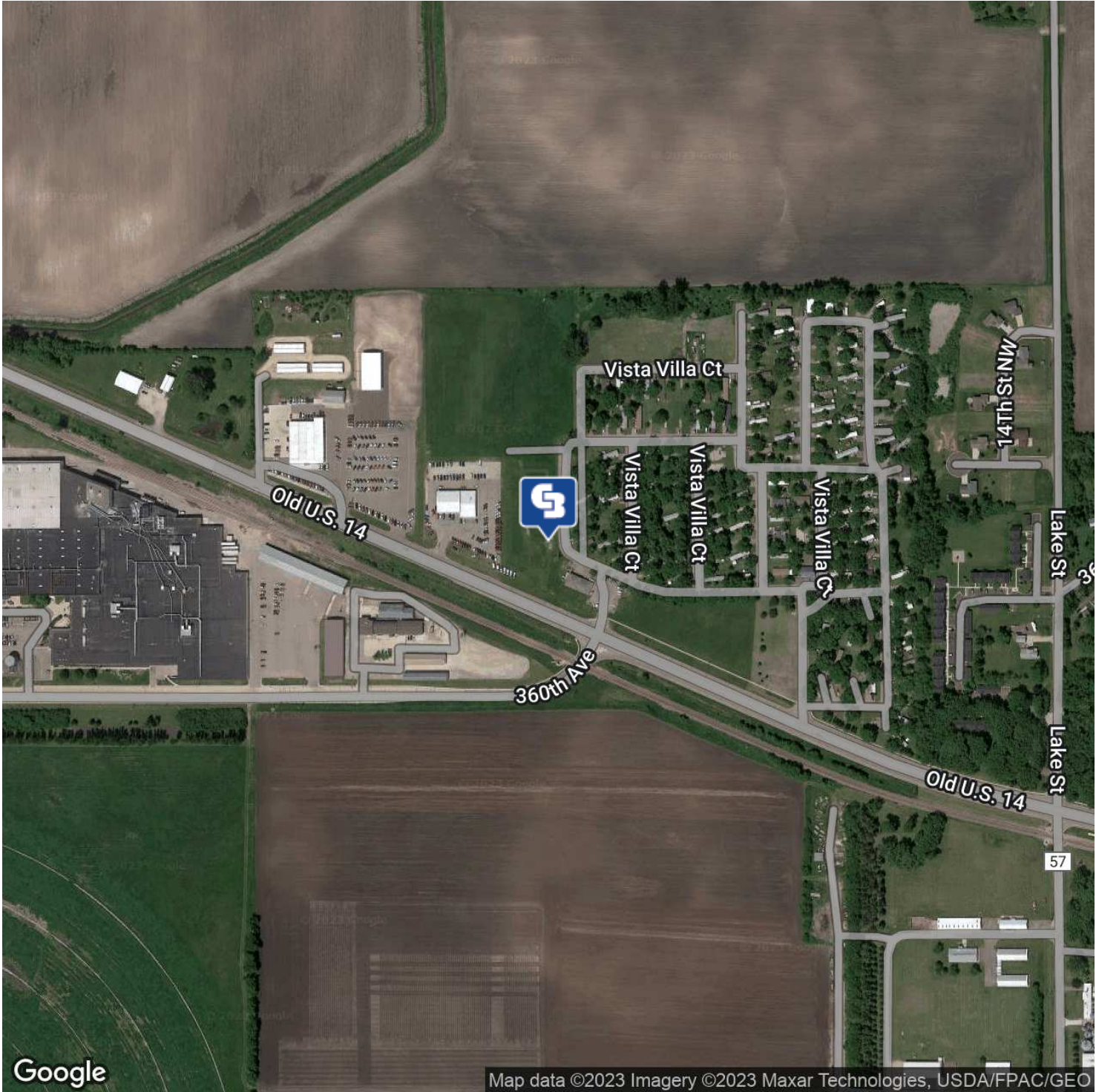
 **COLDWELL  
BANKER  
COMMERCIAL**  
FISHER GROUP



# WASECA - ELM AVE - 1800 W

1800 W. Elm Avenue, Waseca, MN 56093

SALE



CBCWORLDWIDE.COM

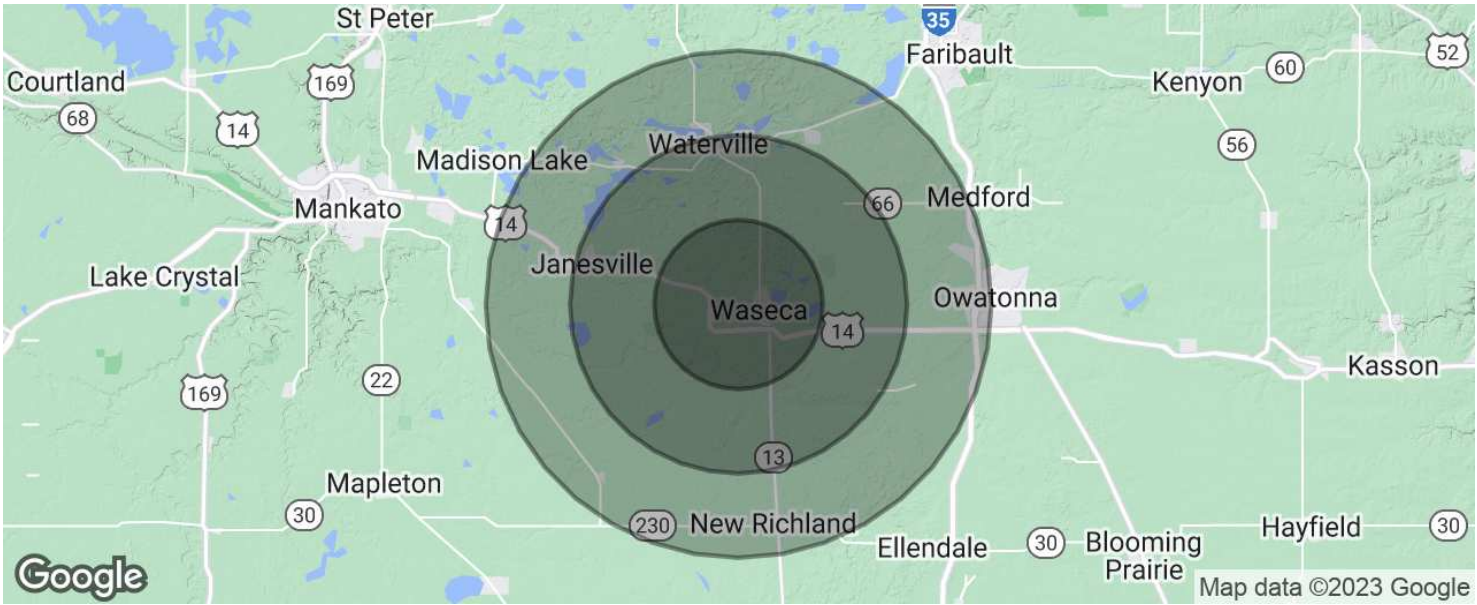
Cate DeBates  
507 676 4327  
cate@cbcfishergroup.com

 **COLDWELL  
BANKER  
COMMERCIAL**  
FISHER GROUP



WASECA - ELM AVE - 1800 W

1800 W. Elm Avenue, Waseca, MN 56093



POPULATION	5 MILES	10 MILES	15 MILES
Total population	16,268	21,175	33,140
Median age	38.7	39.2	40.3
Median age (Male)	38.8	39.0	39.9
Median age (Female)	38.1	39.2	40.6
HOUSEHOLDS & INCOME	5 MILES	10 MILES	15 MILES
Total households	6,202	8,020	12,693
# of persons per HH	2.6	2.6	2.6
Average HH income	\$55,424	\$58,490	\$61,289
Average house value	\$149,622	\$182,487	\$198,444

\* Demographic data derived from 2020 ACS - US Census

CBCWORLDWIDE.COM

Cate DeBates  
507 676 4327  
cate@cbcfishergroup.com