

# 1910 WAYNE AVE.

1910 WAYNE AVE., DAYTON, OH 45410

## PROPERTY SUMMARY



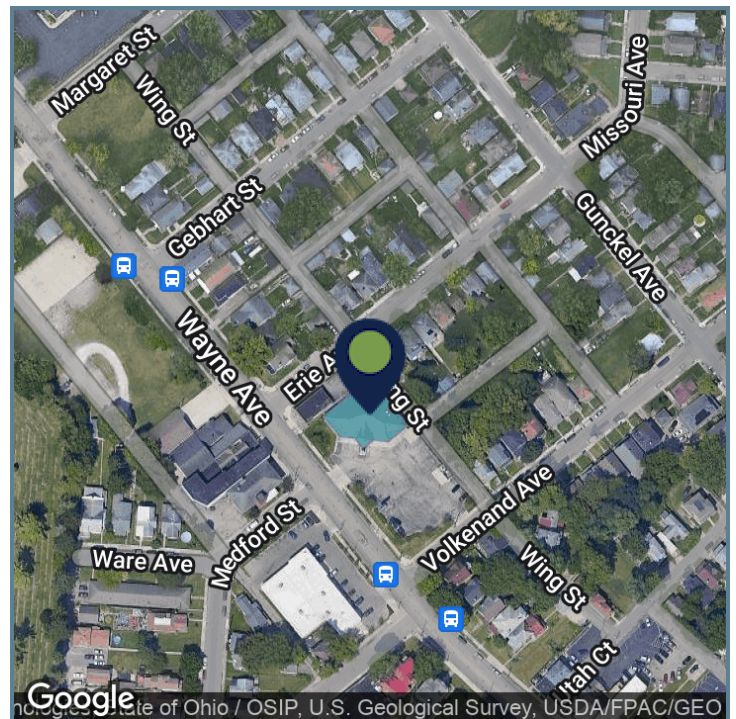
### PROPERTY DESCRIPTION

Strong visibility on the northeast corner of Wayne Ave and Volkenand Ave with up to 1230 Sq Ft available

### PROPERTY HIGHLIGHTS

#### OFFERING SUMMARY

Lease Rate:	Currently Occupied   Inquire if Interested
Number of Units:	3
Available SF:	
Building Size:	5,780 SF



Presented By:

**Legacy Commercial Property**

847.904.9200

info@legacypro.com

# 1910 WAYNE AVE.

1910 WAYNE AVE., DAYTON, OH 45410

ADDITIONAL PHOTOS



Presented By:

**Legacy Commercial Property**

847.904.9200

[info@legacypro.com](mailto:info@legacypro.com)



**LEGACY**  
COMMERCIAL PROPERTY

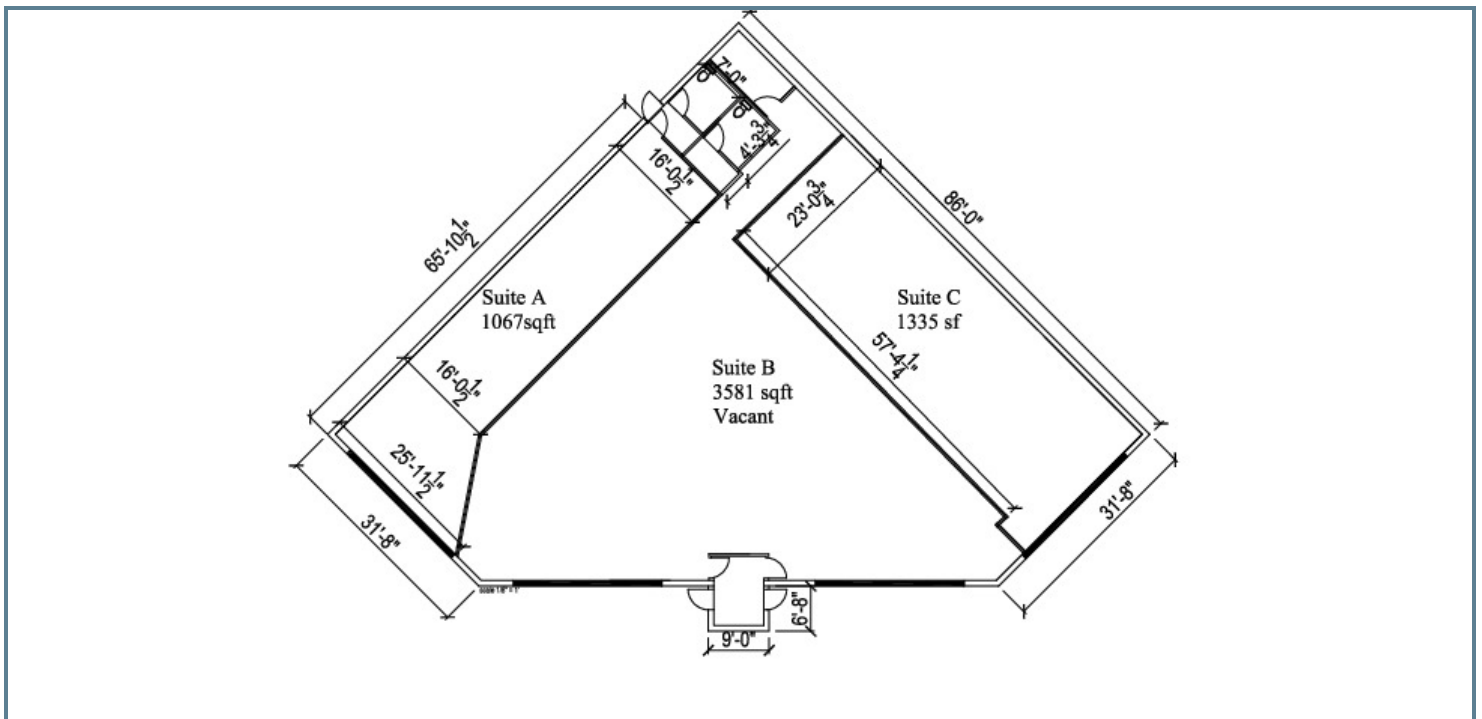
209 Powell Place  
Brentwood, TN 37027  
<http://legacypro.com>



# 1910 WAYNE AVE.

1910 WAYNE AVE., DAYTON, OH 45410

SITE PLANS



Presented By:

Legacy Commercial Property

847.904.9200

info@legacypro.com



**LEGACY**  
COMMERCIAL PROPERTY

209 Powell Place  
Brentwood, TN 37027  
<http://legacypro.com>

# 1910 WAYNE AVE.

1910 WAYNE AVE., DAYTON, OH 45410

## RENT ROLL

TENANT NAME	UNIT NUMBER	UNIT SIZE (SF)	LEASE START	LEASE END	ANNUAL RENT	% OF GLA	PRICE PER SF/YR
CN Dev	A	6,000			\$0	103.81	\$0.00
Totals/Averages		6,000			\$0		\$0.00

Presented By:

Legacy Commercial Property

847.904.9200

info@legacypro.com



**LEGACY**  
COMMERCIAL PROPERTY

209 Powell Place  
Brentwood, TN 37027  
<http://legacypro.com>