

6370 PLEASANT AVE.

6370 PLEASANT AVE., FAIRFIELD, OH 45014

PROPERTY SUMMARY



PROPERTY DESCRIPTION

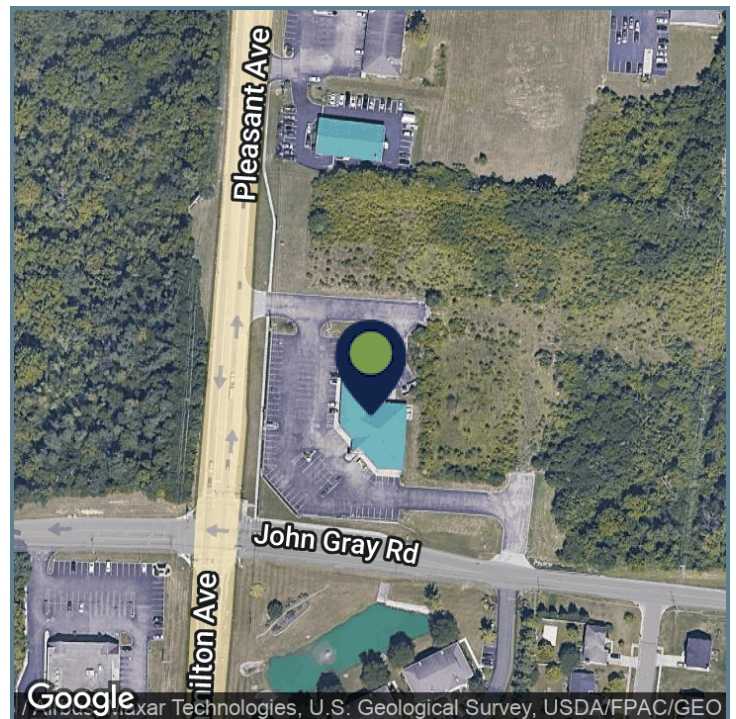
Strong visibility on the northeast corner of Pleasant Ave and John Gray Rd with up to 3349 Sq Ft available

OFFERING SUMMARY

Lease Rate:	Negotiable
Number of Units:	3
Available SF:	3,349 SF
Building Size:	11,716 SF

SPACES	LEASE RATE	SPACE SIZE
6370 Pleasant Ave	Negotiable	3,349 SF

DEMOGRAPHICS	1 MILE	3 MILES	5 MILES
Total Households	3,923	25,534	55,639
Total Population	9,319	60,955	130,788
Average HH Income	\$81,727	\$75,957	\$67,933



Presented By:

Legacy Commercial Property

847.904.9200

info@legacypro.com

6370 PLEASANT AVE.

6370 PLEASANT AVE., FAIRFIELD, OH 45014

ADDITIONAL PHOTOS



Presented By:

Legacy Commercial Property

847.904.9200

info@legacypro.com



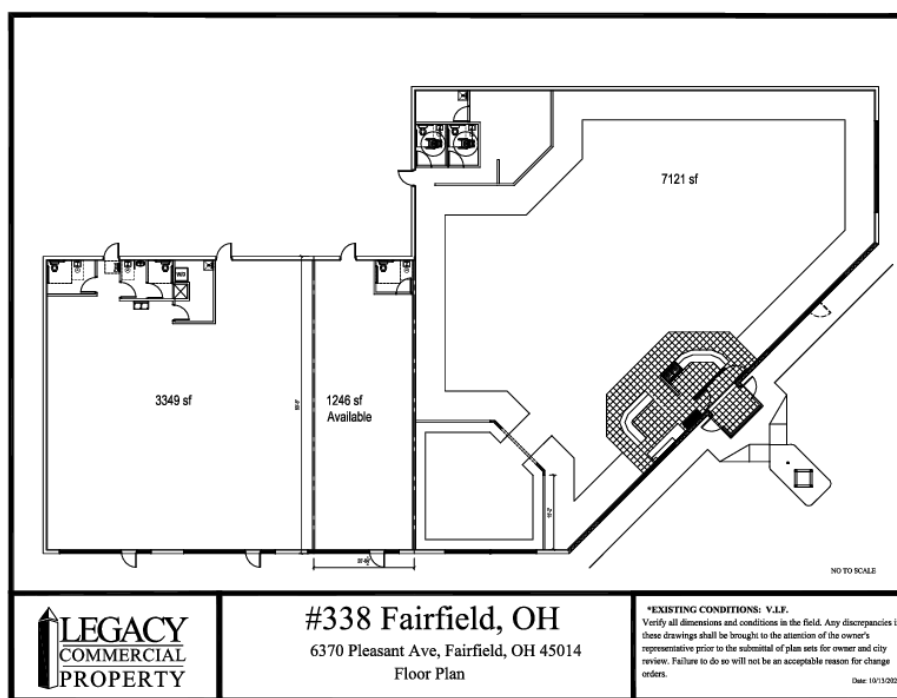
LEGACY
COMMERCIAL PROPERTY

209 Powell Place
Brentwood, TN 37027
<http://legacypro.com>

6370 PLEASANT AVE.

6370 PLEASANT AVE., FAIRFIELD, OH 45014

SITE PLANS



Presented By:

Legacy Commercial Property

847.904.9200

info@legacypro.com



LEGACY
COMMERCIAL PROPERTY

209 Powell Place
Brentwood, TN 37027
<http://legacypro.com>

6370 PLEASANT AVE.

6370 PLEASANT AVE., FAIRFIELD, OH 45014

RENT ROLL

TENANT NAME	UNIT NUMBER	UNIT SIZE (SF)	LEASE START	LEASE END	ANNUAL RENT	% OF GLA	PRICE PER SF/YR
Vacant	A	3,349			\$0	28.58	\$0.00
Cincy Smoke Shop	B	1,246			\$0	10.64	\$0.00
DoorDash	C	7,121			\$0	60.78	\$0.00
Totals/Averages		11,716			\$0		\$0.00

Presented By:

Legacy Commercial Property

847.904.9200

info@legacypro.com



LEGACY
COMMERCIAL PROPERTY

209 Powell Place
Brentwood, TN 37027
<http://legacypro.com>