

# 2410 SCHOFIELD AVE.

2410 SCHOFIELD AVE., WESTON, WI 54476

## PROPERTY SUMMARY



### PROPERTY DESCRIPTION

Strong visibility on the northeast corner of Schofield Ave and Cutoff Rd with up to 5800 Sq Ft available

### PROPERTY HIGHLIGHTS

### OFFERING SUMMARY

Lease Rate:	Negotiable
Available SF:	5,849 SF
Building Size:	8,549 SF

DEMOGRAPHICS	1 MILE	3 MILES	5 MILES
Total Households	2,496	11,849	26,513
Total Population	5,160	26,338	58,791
Average HH Income	\$56,941	\$70,912	\$71,829

Presented By:

Legacy Commercial Property

847.904.9200

info@legacypro.com

# 2410 SCHOFIELD AVE.

2410 SCHOFIELD AVE., WESTON, WI 54476

ADDITIONAL PHOTOS



Presented By:

**Legacy Commercial Property**

847.904.9200

[info@legacypro.com](mailto:info@legacypro.com)



**LEGACY**  
COMMERCIAL PROPERTY

209 Powell Place  
Brentwood, TN 37027  
<http://legacypro.com>

# 2410 SCHOFIELD AVE.

2410 SCHOFIELD AVE., WESTON, WI 54476

PLANS



## LEASE INFORMATION

Lease Type:	NNN	Lease Term:	Negotiable
Total Space:	5,849 SF	Lease Rate:	Negotiable

## AVAILABLE SPACES

SUITE	TENANT	SIZE	TYPE	RATE	DESCRIPTION
2410 Schofield Ave	Papa Murphy's	1,500 SF	NNN	Negotiable	-
2410 Schofield Ave	Great Clips	1,200 SF	NNN	-	-
2410 Schofield Ave	Available	5,849 SF	NNN	Negotiable	-

Presented By:

Legacy Commercial Property

847.904.9200

info@legacypro.com



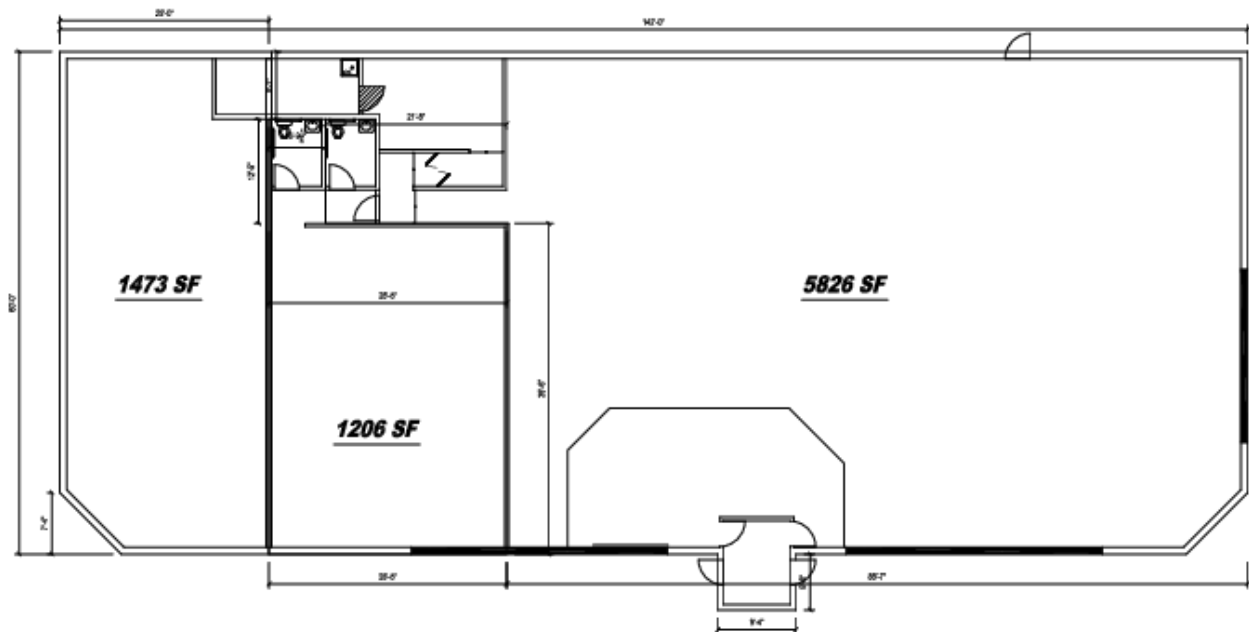
**LEGACY**  
COMMERCIAL PROPERTY

209 Powell Place  
Brentwood, TN 37027  
<http://legacypro.com>

# 2410 SCHOFIELD AVE.

2410 SCHOFIELD AVE., WESTON, WI 54476

## FLOOR PLANS



**#218 Weston, WI**  
2410 Schofield ave Weston, WI 54476  
Floor Plan

**\*EXISTING CONDITIONS: V.L.F.**

Verify all dimensions and conditions in the field. Any discrepancies in these drawings shall be brought to the attention of the owner's representative prior to the submittal of plan sets for owner and city review. Failure to do so will not be an acceptable reason for change orders.

Date: 10/13/2020

Presented By:

Legacy Commercial Property

847.904.9200

info@legacypro.com



**LEGACY**  
COMMERCIAL PROPERTY

209 Powell Place  
Brentwood, TN 37027  
<http://legacypro.com>