

29949 UTICA RD.

ROSEVILLE, MI 48066

PROPERTY SUMMARY



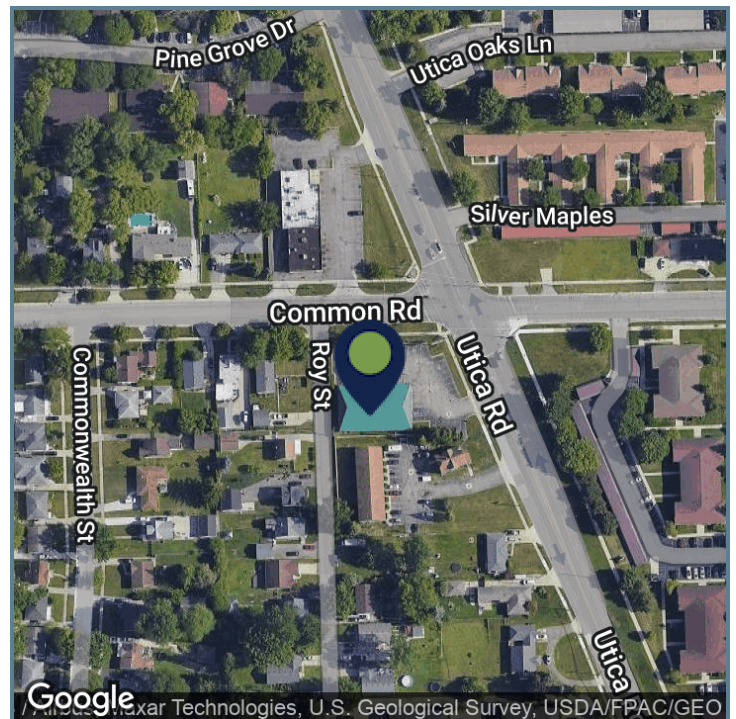
PROPERTY DESCRIPTION

Check out this exciting leasing opportunity at 29949 UTICA RD, located in the heart of Roseville, MI. With its strategic location, this property is the perfect choice for businesses looking to establish and expand their presence within Roseville. Reach out to our team for further information and arrange a showing.

OFFERING SUMMARY

Lease Rate:	Currently Occupied Inquire if Interested
Number of Units:	1
Available SF:	
Building Size:	7,235 SF

SPACES	LEASE RATE			SPACE SIZE
DEMOGRAPHICS	1 MILE	3 MILES	5 MILES	
Total Households	7,451	54,662	140,289	



Presented By:

Legacy Commercial Property

847.904.9200

info@legacypro.com

29949 UTICA RD.

ROSEVILLE, MI 48066

ADDITIONAL PHOTOS



Presented By:

Legacy Commercial Property

847.904.9200

info@legacypro.com



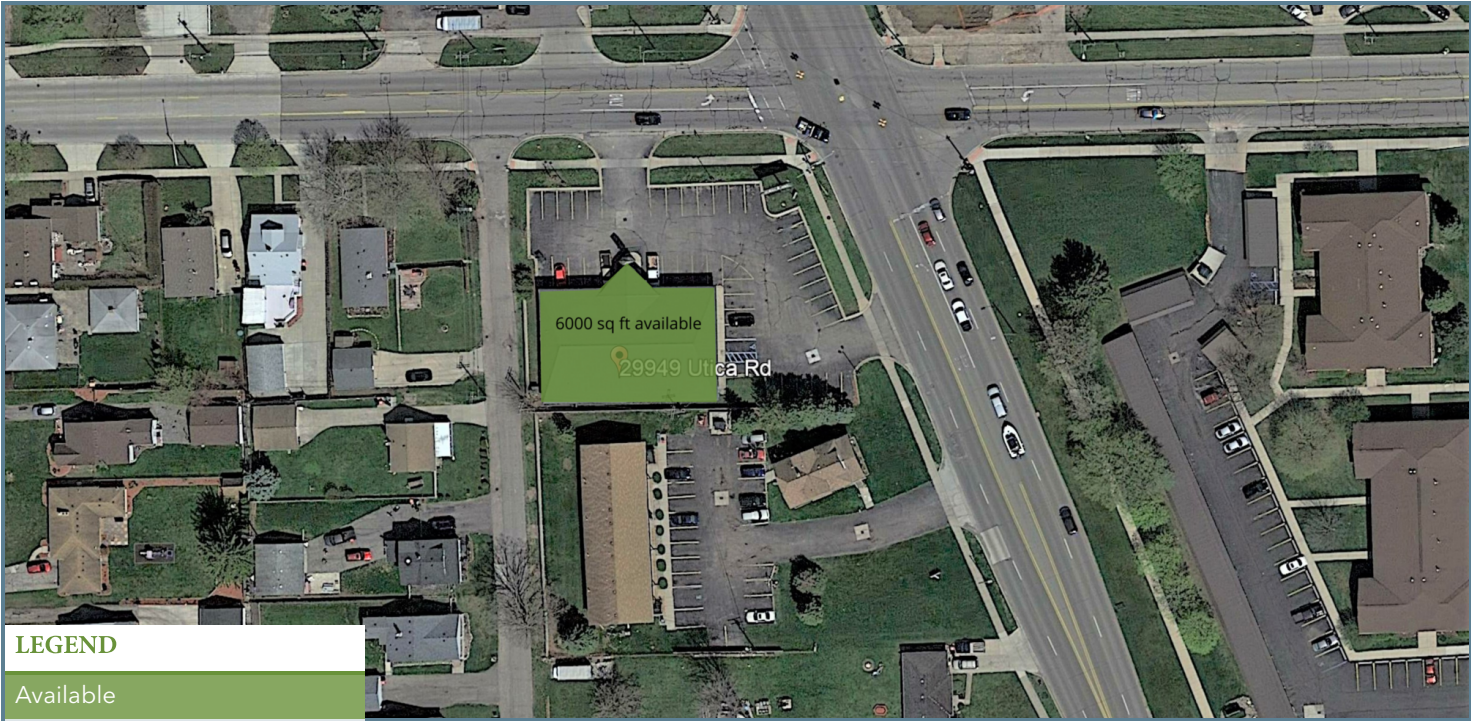
LEGACY
COMMERCIAL PROPERTY

209 Powell Place
Brentwood, TN 37027
<http://legacypro.com>

29949 UTICA RD.

ROSEVILLE, MI 48066

PLANS



LEGEND

Available

LEASE INFORMATION

Lease Type:	-	Lease Term:	Negotiable
Total Space:	-	Lease Rate:	Currently Occupied Inquire if Interested

AVAILABLE SPACES

SUITE	TENANT	SIZE	TYPE	RATE	DESCRIPTION
-------	--------	------	------	------	-------------

Presented By:
Legacy Commercial Property
847.904.9200
info@legacypro.com



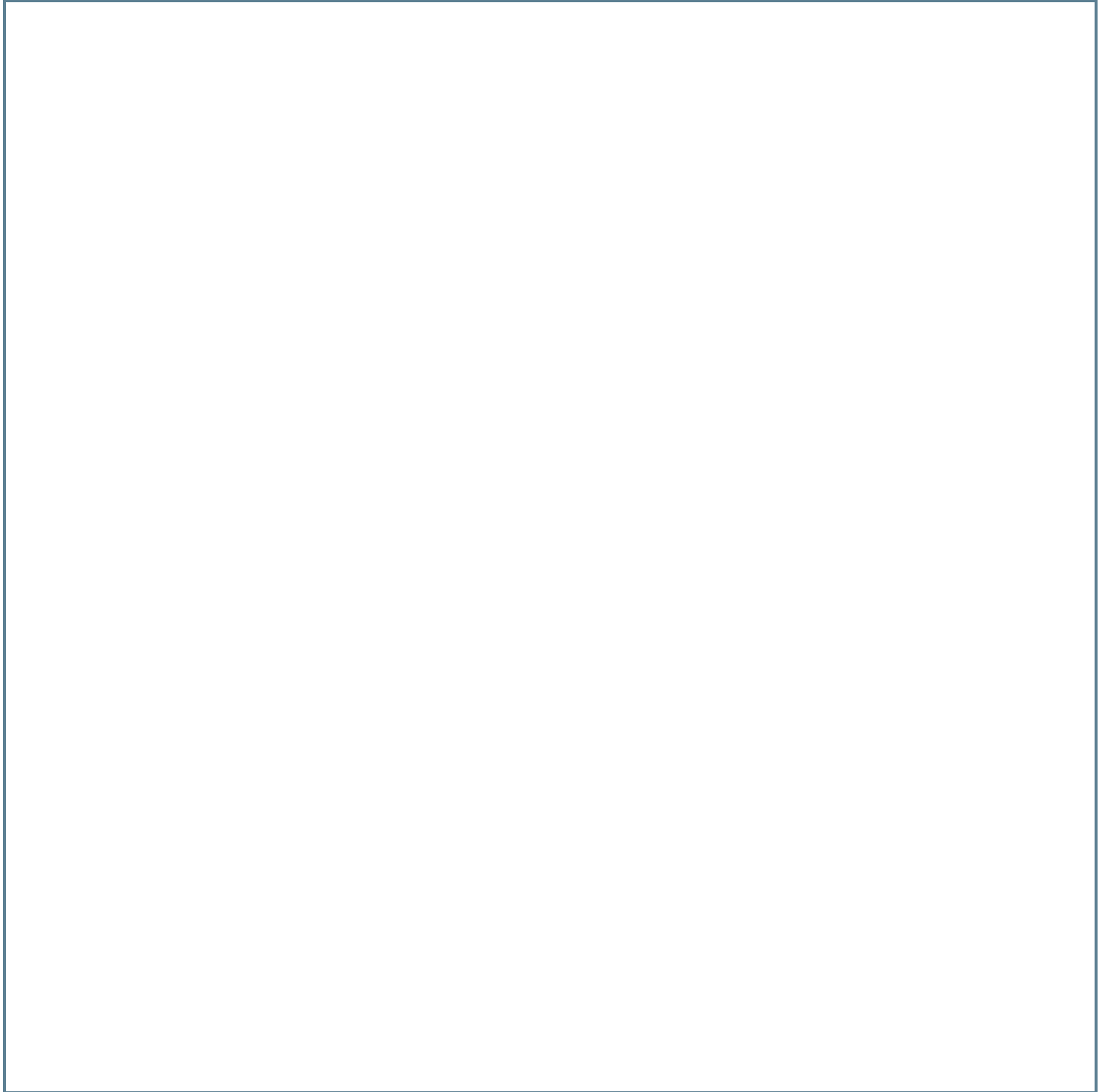
LEGACY
COMMERCIAL PROPERTY

209 Powell Place
Brentwood, TN 37027
http:legacypro.com

29949 UTICA RD.

ROSEVILLE, MI 48066

RETAILER MAP



Presented By:

Legacy Commercial Property

847.904.9200

info@legacypro.com



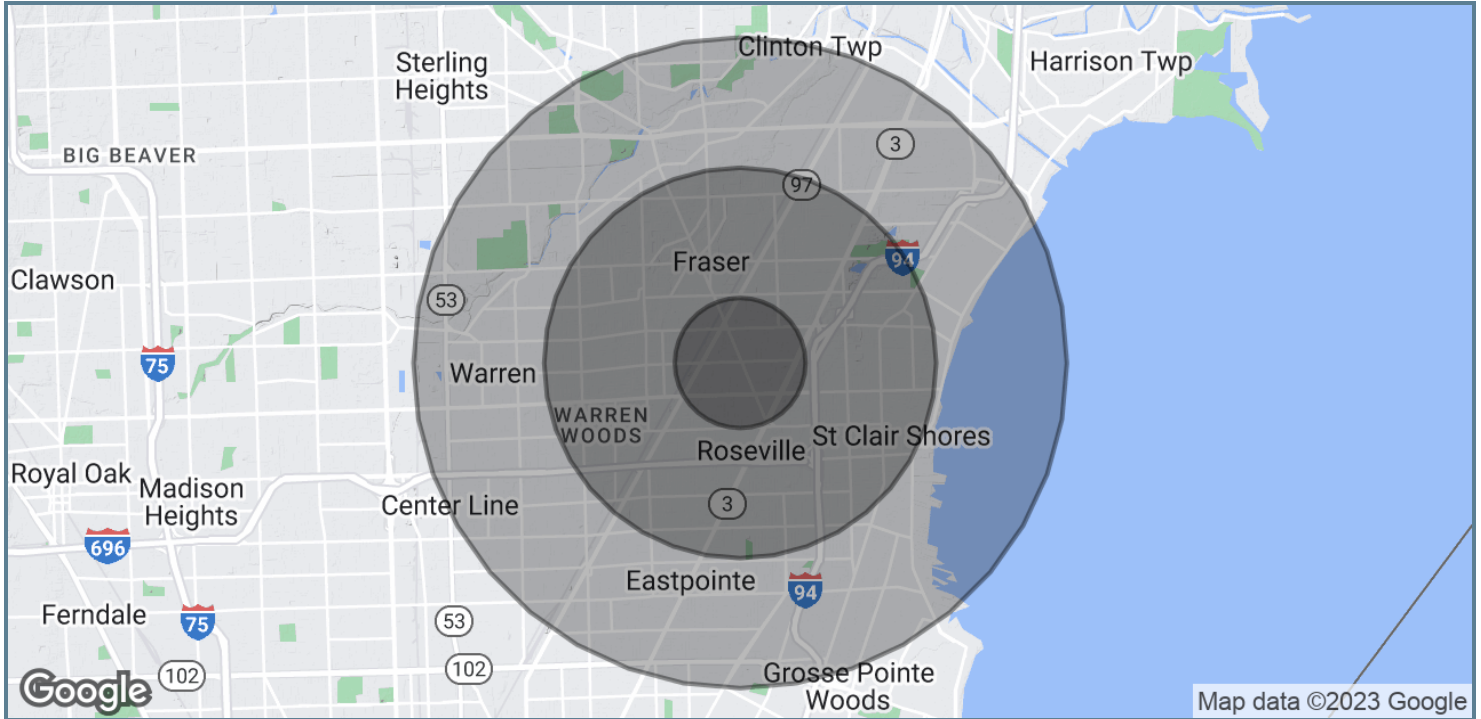
LEGACY
COMMERCIAL PROPERTY

209 Powell Place
Brentwood, TN 37027
<http://legacypro.com>

29949 UTICA RD.

ROSEVILLE, MI 48066

DEMOGRAPHICS MAP & REPORT



POPULATION	1 MILE	3 MILES	5 MILES
Total Population	16,383	130,999	337,726
Average Age	38.3	39.7	40.2
Average Age (Male)	36.4	38.4	38.6
Average Age (Female)	40.7	41.0	41.5
HOUSEHOLDS & INCOME	1 MILE	3 MILES	5 MILES
Total Households	7,451	54,662	140,289
# of Persons per HH	2.2	2.4	2.4
Average HH Income	\$46,940	\$55,808	\$57,801
Average House Value	\$119,991	\$134,713	\$138,570

* Demographic data derived from 2020 ACS - US Census

Presented By:

Legacy Commercial Property

847.904.9200

info@legacypro.com



LEGACY
COMMERCIAL PROPERTY

209 Powell Place
Brentwood, TN 37027
<http://legacypro.com>



LEGACY
COMMERCIAL PROPERTY

Accelerate Your National Growth

Legacy Commercial Property specializes in leasing, acquisitions, development, construction, and property management. We've operated over ten businesses in 800 locations and truly understand what you, as an operator, need. We pride ourselves in operating quickly and have a proven track record of helping you find the best locations in every market.

Your Go-to Expansion Partner

Grow Quickly with Our Portfolio

- Flexible leasing options
- Strong visibility and signage
- Build to suit and ground leases
- Exclusive rights to property

Grow Strategically with New Developments

- Site selection experts
- Ground up development
- Buy-to-hold investments
- Experienced developers
- Creative deals and off-market properties
- Efficient development process

Our National Tenants

DOLLAR GENERAL



Why Legacy



Large Portfolio

Leverage our 700+ properties in 20+ states to quickly expand your national footprint.



One Partner

We help you quickly find locations, finance deals, manage construction, and eliminate inefficiencies.



Prime Locations

Our properties are located on high-traffic corner lots known as "Main and Main."



True Operators

We've operated over ten businesses in 800+ locations and understand your need to move quickly.

