

SURVEY

THE SOUTHEAST QUARTER OF SECTION 9,
OF SECTION 10, ALL IN TOWNSHIP 8-NORTH,
MERIDIAN, PEORIA COUNTY, ILLINOIS.

35° (2,664.28')

N 00°00'24" E 2,441.74'

S 00°00'24" W 727.64'



TRACT 2
61.63 ACRES±
PART OF
P.L.N. 17-09-400-005
TO BE COMBINED WITH
TRACTS 1 & 3

351-009

299.97' (300.00')

N LINE,
SOUTH 1/4
ACRES SW
1/4, SEC. 10

TITLE:

PLAT OF SURVEY

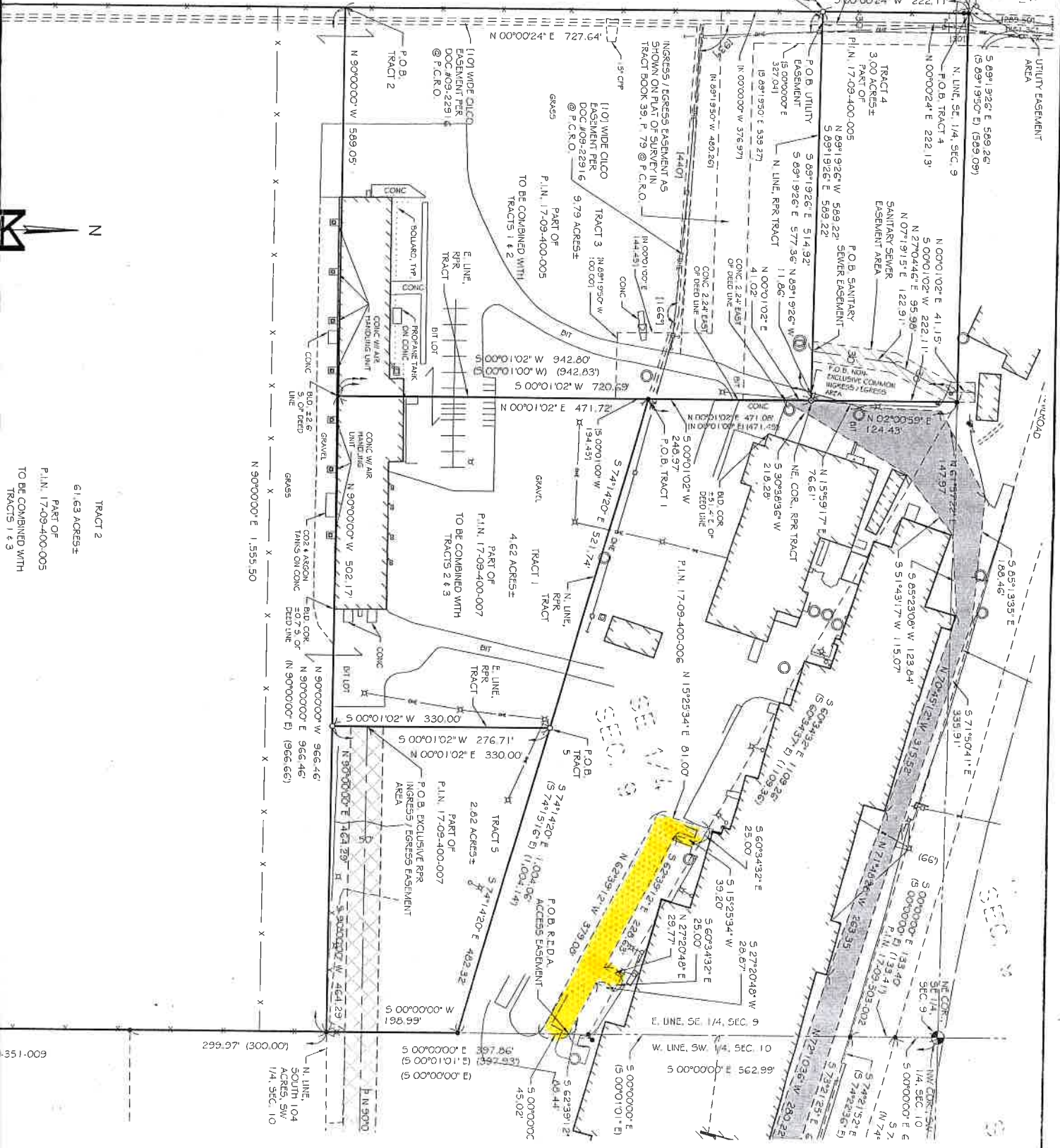
A PART OF THE NORTHEAST QUARTER AND THE SOUTHEAST QUARTER OF SECTION 9,
ALSO PART OF THE SOUTHWEST QUARTER OF SECTION 10, ALL IN TOWNSHIP 8-NORTH,
RANGE 7 EAST OF THE FOURTH PRINCIPAL MERIDIAN, PEORIA COUNTY, ILLINOIS.

PROJECT NO.
11-077

SHEET 1 OF 3
DRAWING NO.

1

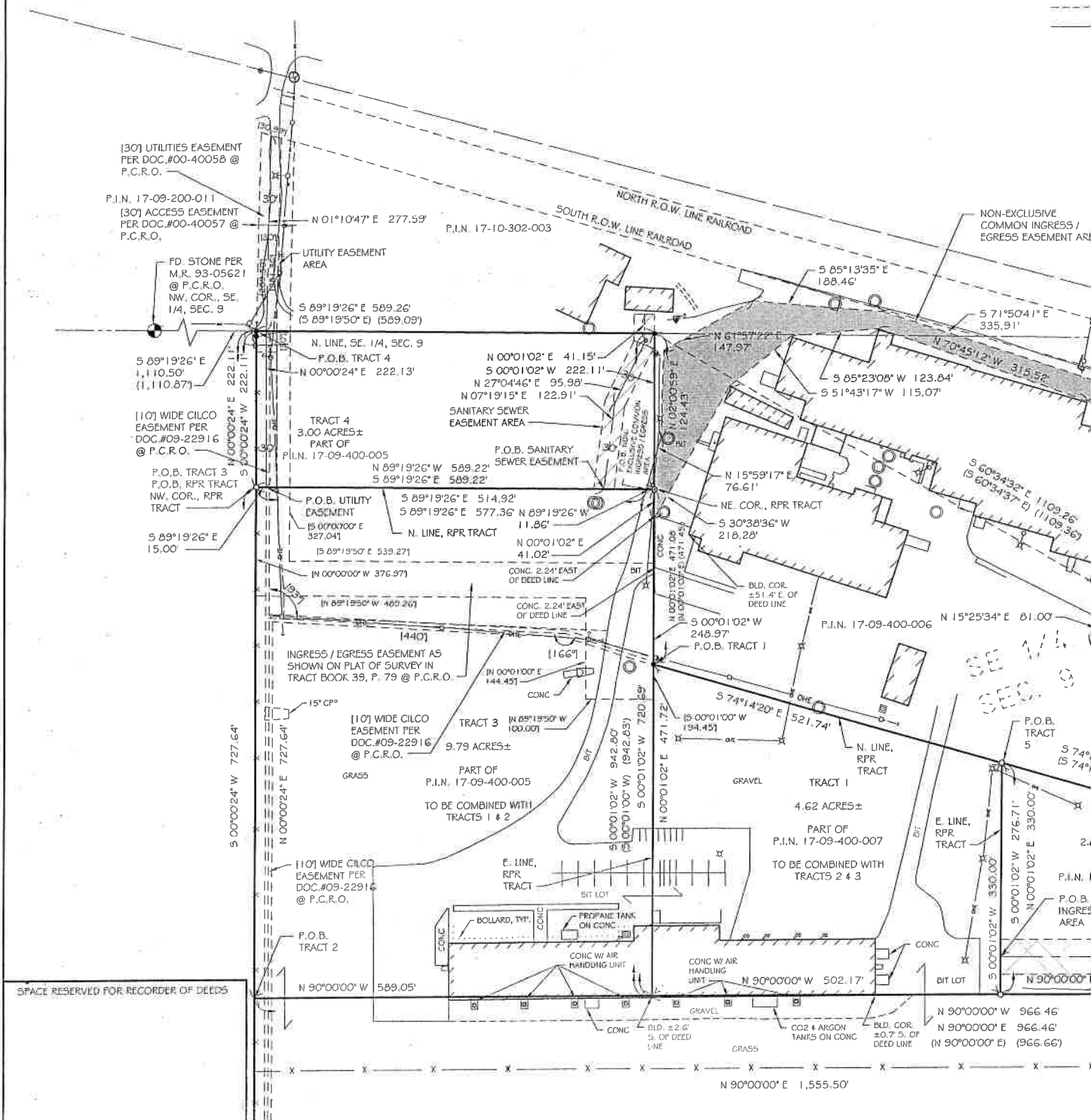
CLIENT:
RPR PROPERTIES, LLC



PLAT OF SURVEY

A PART OF THE NORTHEAST QUARTER AND THE SOUTHEAST QUARTER OF SECTION 9,
ALSO PART OF THE SOUTHWEST QUARTER OF SECTION 10, ALL IN TOWNSHIP-8-NORTH,
RANGE-7-EAST OF THE FOURTH PRINCIPAL MERIDIAN, PEORIA COUNTY, ILLINOIS

LEGEND



MOHR & KERR ENGINEERING & LAND SURVEYING, P.C.
7336 N. University Ave.
Peoria, Illinois 61614
www.mohrandkerr.com

Office: (309) 692-8500
Fax: (309) 692-8501
Professional Design Firm #184.005091

REV.	DATE	NATURE OF REVISION	CHECKER	SURVEYED	MWM / CEJ / MC
				DRAWN	CEJ
				CHECKED	MWM
				SCALE	1" = 100'
				DATE	12-27-11

FILE NAME: P:\11-077 Obrien Robin Site Alter\EXIST MK TOPO 11-077.dwg Dec 27, 2011

PLAT OF SURVEY

A PART OF THE SOUTHEAST QUARTER OF SECTION 9, TOWNSHIP-8-NORTH, RANGE-7-EAST OF THE FOURTH PRINCIPAL MERIDIAN, PEORIA COUNTY, ILLINOIS. BEING MORE PARTICULARLY DESCRIBED AS FOLLOWS:

COMMENCING AT A STONE FOUND AT THE NORTHWEST CORNER OF THE SOUTHEAST QUARTER OF SAID SECTION 9; THENCE SOUTH 69 DEGREES 19 MINUTES 26 SECONDS EAST, BEARINGS ARE FOR DESCRIPTION PURPOSES ONLY ALONG THE NORTH LINE OF SAID SOUTHEAST QUARTER, A DISTANCE OF 1,110.50 FEET; THENCE SOUTH 60 DEGREES 00 MINUTES 24 SECONDS WEST, A DISTANCE OF 222.11 FEET TO THE POINT OF BEGINNING OF THE TRACT TO BE DESCRIBED;

FROM THE POINT OF BEGINNING, THENCE SOUTH 89 DEGREES 19 MINUTES 26 SECONDS EAST, A DISTANCE OF 589.22 FEET; THENCE SOUTH 00 DEGREES 01 MINUTES 02 SECONDS WEST, A DISTANCE OF 248.97 FEET; THENCE SOUTH 74 DEGREES 14 MINUTES 20 SECONDS EAST, A DISTANCE OF 921.74 FEET; THENCE SOUTH 00 DEGREES 01 MINUTES 02 SECONDS WEST, A DISTANCE OF 330.00 FEET; THENCE NORTH 00 DEGREES 00 MINUTES 00 SECONDS EAST, A DISTANCE OF 464.29 FEET, TO THE EAST LINE OF SAID SOUTHEAST QUARTER OF SECTION 9; THENCE SOUTH 00 DEGREES 00 MINUTES 00 SECONDS WEST, ALONG SAID EAST LINE OF THE SOUTHEAST QUARTER OF SECTION 9, A DISTANCE OF 1,737.41 FEET, TO A STONE FOUND AT THE SOUTHEAST CORNER OF SAID SOUTHEAST QUARTER; THENCE NORTH 89 DEGREES 08 MINUTES 29 SECONDS WEST, ALONG THE SOUTH LINE OF SAID SOUTHEAST QUARTER, A DISTANCE OF 1,555.86 FEET; THENCE NORTH 00 DEGREES 00 MINUTES 24 SECONDS EAST, A DISTANCE OF 2,441.74 FEET TO THE POINT OF BEGINNING, CONTAINING 76.04 ACRES, MORE OR LESS.

TRACT 1 DESCRIPTION

A PART OF THE SOUTHEAST QUARTER OF SECTION 9, TOWNSHIP-8-NORTH, RANGE-7-EAST OF THE FOURTH PRINCIPAL MERIDIAN, PEORIA COUNTY, ILLINOIS. BEING MORE PARTICULARLY DESCRIBED AS FOLLOWS:

COMMENCING AT A STONE FOUND AT THE NORTHWEST CORNER OF THE SOUTHEAST QUARTER OF SAID SECTION 9; THENCE SOUTH 89 DEGREES 19 MINUTES 26 SECONDS EAST, (BEARINGS ARE FOR DESCRIPTION PURPOSES ONLY) ALONG THE NORTH LINE OF SAID SOUTHEAST QUARTER, A DISTANCE OF 1,110.50 FEET; THENCE SOUTH 00 DEGREES 00 MINUTES 24 SECONDS WEST, A DISTANCE OF 222.11 FEET; THENCE SOUTH 89 DEGREES 19 MINUTES 26 SECONDS EAST, A DISTANCE OF 589.22 FEET; THENCE SOUTH 00 DEGREES 01 MINUTES 02 SECONDS WEST, A DISTANCE OF 248.97 FEET TO THE POINT OF BEGINNING OF TRACT 1 TO BE DESCRIBED;

FROM THE POINT OF BEGINNING, THENCE SOUTH 74 DEGREES 14 MINUTES 20 SECONDS EAST, A DISTANCE OF 521.74 FEET; THENCE SOUTH 00 DEGREES 01 MINUTES 02 SECONDS WEST, A DISTANCE OF 330.00 FEET; THENCE NORTH 90 DEGREES 00 MINUTES 00 SECONDS WEST, A DISTANCE OF 502.17 FEET; THENCE NORTH 03 DEGREES 01 MINUTES 02 SECONDS EAST, A DISTANCE OF 471.72 FEET TO THE POINT OF BEGINNING, CONTAINING 4.62 ACRES, MORE OR LESS,

TRACT 2 DESCRIPTION

61.63 ACRES, MORE OR LESS, LYING IN PART OF THE SOUTHEAST QUARTER OF SECTION 9, TOWNSHIP-8-NORTH, RANGE-7-EAST OF THE FOURTH PRINCIPAL MERIDIAN, PEORIA COUNTY, ILLINOIS, BEING MORE PARTICULARLY DESCRIBED AS FOLLOWS:

COMMENCING AT A STONE FOUND AT THE NORTHWEST CORNER OF THE SOUTHEAST QUARTER OF SAID SECTION 9; THENCE SOUTH 89 DEGREES 19 MINUTES 26 SECONDS EAST, (BEARINGS ARE FOR DESCRIPTION PURPOSES ONLY) ALONG THE NORTH LINE OF SAID SOUTHEAST QUARTER, A DISTANCE OF 1,110.50 FEET; THENCE SOUTH 00 DEGREES 00 MINUTES 24 SECONDS WEST, A DISTANCE OF 727.64 FEET TO THE POINT OF BEGINNING OF TRACT 2 TO BE DESCRIBED;

FROM THE POINT OF BEGINNING; THENCE NORTH 90 DEGREES 00 MINUTES 00 SECONDS EAST, A DISTANCE OF 1,555.50 FEET, TO THE EAST LINE OF SAID SOUTHEAST QUARTER OF SECTION 9; THENCE SOUTH 00 DEGREES 00 MINUTES 00 SECONDS WEST, ALONG SAID EAST LINE OF THE SOUTHEAST QUARTER OF SECTION 9, A DISTANCE OF 1,737.41 FEET, TO A STONE FOUND AT THE SOUTHEAST CORNER OF SAID SOUTHEAST QUARTER; THENCE NORTH 69 DEGREES 08 MINUTES 29 SECONDS WEST, ALONG SAID SOUTH LINE OF THE SOUTHEAST QUARTER OF SECTION 9, A DISTANCE OF 1,555.88 FEET; THENCE NORTH 00 DEGREES 00 MINUTES 24 EAST, A DISTANCE OF 1,714.10 FEET TO THE POINT OF BEGINNING, CONTAINING 61.63 ACRES, MORE OR LESS.

TRACT 3 DESCRIPTION

A PART OF THE SOUTHEAST QUARTER OF SECTION 9, TOWNSHIP-8-NORTH, RANGE-7 EAST OF THE FOURTH PRINCIPAL MERIDIAN, PEORIA COUNTY, ILLINOIS. BEING MORE PARTICULARLY DESCRIBED AS FOLLOWS:

COMMENCING AT A STONE FOUND AT THE NORTHWEST CORNER OF THE SOUTHEAST QUARTER OF SAID SECTION 9; THENCE SOUTH 68 DEGREES 19 MINUTES 26 SECONDS EAST, (BEARINGS ARE FOR DESCRIPTION PURPOSES ONLY) ALONG THE NORTH LINE OF SAID SOUTHEAST QUARTER, A DISTANCE OF 1,110.50 FEET; THENCE SOUTH 00 DEGREES 00 MINUTES 24 SECONDS WEST, A DISTANCE OF 222.11 FEET TO THE POINT OF BEGINNING OF TRACT 3 TO BE DESCRIBED:

FROM THE POINT OF BEGINNING; THENCE SOUTH 69 DEGREES 19 MINUTES 26 SECONDS EAST, A DISTANCE OF 589.22 FEET; THENCE SOUTH 00 DEGREES 01 MINUTES 02 SECONDS WEST, A DISTANCE OF 720.68, THENCE NORTH 90 DEGREES 00 MINUTES 00 SECONDS WEST, A DISTANCE OF 589.05 FEET; THENCE NORTH 00 DEGREES 00 MINUTES 24 SECONDS EAST, A DISTANCE OF 727.64 FEET TO THE POINT OF BEGINNING, CONTAINING 9.79 ACRES, MORE OR LESS.

TRACT 4 DESCRIPTION

A PART OF THE SOUTHEAST QUARTER OF SECTION 9, TOWNSHIP-8-NORTH, RANGE-7-EAST OF THE FOURTH PRINCIPAL MERIDIAN, PEORIA COUNTY, ILLINOIS, BEING MORE PARTICULARLY DESCRIBED AS FOLLOWS:

COMMENCING AT A STONE FOUND AT THE NORTHWEST CORNER OF THE SOUTHEAST QUARTER OF SAID SECTION 9; THENCE SOUTH 89 DEGREES 19 MINUTES 26 SECONDS EAST, (BEARINGS ARE FOR DESCRIPTION PURPOSES ONLY) ALONG THE NORTH LINE OF SAID SOUTHEAST QUARTER, A DISTANCE OF 1.110.50 FEET TO THE POINT OF BEGINNING OF TRACT 4 TO BE DESCRIBED;

FROM THE POINT OF BEGINNING, THENCE CONTINUING SOUTH 89 DEGREES 19 MINUTES 26 SECONDS EAST, ALONG SAID NORTH LINE OF THE SOUTHEAST QUARTER, A DISTANCE OF 589.26 FEET; THENCE SOUTH 00 DEGREES 01 MINUTES 02 SECONDS WEST, A DISTANCE OF 222.11 FEET; THENCE NORTH 89 DEGREES 19 MINUTES 26 SECONDS WEST, A DISTANCE OF 589.26 FEET; THENCE NORTH 00 DEGREES 00 MINUTES 24 SECONDS EAST, A DISTANCE OF 222.11 FEET, TO THE SAID NORTH LINE OF THE SOUTHEAST QUARTER, ALSO BEING THE POINT OF BEGINNING, CONTAINING 3.00 ACRES, MORE OR LESS.

SPACE RESERVED FOR RECORDER OF DEEDS

A PART OF THE NORTHEAST QUARTER AND THE SOUTHEAST QUARTER OF SECTION 9,
ALSO PART OF THE SOUTHWEST QUARTER OF SECTION 10, ALL IN TOWNSHIP-8-NORTH,
RANGE-7-EAST OF THE FOURTH PRINCIPAL MERIDIAN, PEORIA COUNTY, ILLINOIS.

TRACT 5 DESCRIPTION

A PART OF THE SOUTHEAST QUARTER OF SECTION 9, TOWNSHIP 8-NORTH, RANGE-7-EAST OF THE PRINCIPAL MERIDIAN, PEORIA COUNTY, ILLINOIS. BEING MORE PARTICULARLY DESCRIBED AS FOLLO

COMMENCING AT A STONE FOUND AT THE NORTHWEST CORNER OF THE SOUTHEAST QUARTER OF THENCE SOUTH 69 DEGREES 19 MINUTES 26 SECONDS EAST, (BEARINGS ARE, FOR DESCRIPTION, ALONG THE NORTH LINE OF SAID SOUTHEAST QUARTER, A DISTANCE OF 1,110.50 FEET; THENCE S DEGREES 00 MINUTES 24 SECONDS WEST, A DISTANCE OF 222.11 FEET; THENCE SOUTH 69 DEGREE 26 SECONDS EAST, A DISTANCE OF 569.22 FEET; THENCE SOUTH 00 DEGREES 01 MINUTES 02 SECONDS WEST, A DISTANCE OF 240.97 FEET; THENCE SOUTH 74 DEGREES 14 MINUTES 20 SECONDS EAST, A DISTANCE OF 240.97 FEET; THENCE SOUTH 74 DEGREES 14 MINUTES 20 SECONDS EAST, A DISTANCE OF 240.97 FEET TO THE POINT OF BEGINNING OF TRACT 5 TO BE DESCRIBED;

FROM THE POINT OF BEGINNING; THENCE CONTINUING SOUTH 74 DEGREES 14 MINUTES 20 SECONDS EAST, A DISTANCE OF 482.32 FEET; TO THE EAST LINE OF SAID SOUTHEAST QUARTER OF SECTION 9; THENCE CONTINUING SOUTH 00 DEGREES 00 MINUTES 00 SECONDS WEST, ALONG SAID EAST LINE OF THE SOUTHEAST QUARTER OF SECTION 9, A DISTANCE OF 198.99 FEET; THENCE SOUTH 90 DEGREES 00 MINUTES 00 SECONDS WEST, A DISTANCE OF 464.29; THENCE NORTH 00 DEGREES 01 MINUTES 02 SECONDS EAST, A DISTANCE OF 330.00 FEET TO THE POINT OF BEGINNING, CONTAINING 2.62 ACRES, MORE OR LESS.

UTILITY EASEMENT AREA

A PART OF THE NORTHEAST QUARTER AND THE SOUTHEAST QUARTER OF SECTION 9, ALSO PART OF QUARTER OF SECTION 10, ALL IN TOWNSHIP 8-NORTH, RANGE-7-EAST OF THE FOURTH PRINCIPAL COUNTY, ILLINOIS, BEING A STRIP OF LAND 30 FEET WIDE LYING 15 FEET EITHER SIDE OF THE FOLLOWING CENTER LINE:

COMMENCING AT A STONE FOUND AT THE NORTHWEST CORNER OF THE SOUTHEAST QUARTER OF THENCE SOUTH 89 DEGREES 19 MINUTES 26 SECONDS EAST, (BEARINGS ARE FOR DESCRIPTION ALONG THE NORTH LINE OF SAID SOUTHEAST QUARTER, A DISTANCE OF 1,110.50 FEET, THENCE 00 MINUTES 24 SECONDS WEST, A DISTANCE OF 222.11 FEET, TO THE NORTHWEST CORNER OF THE SOUTHWEST QUARTER OF SAID SECTION 36, THENCE SOUTH 89 DEGREES 19 MINUTES 26 SECONDS EAST, ALONG THE NORTH LINE OF SAID R. DISTANCE OF 15.00 FEET TO THE POINT OF BEGINNING OF THE CENTERLINE OF A 30.00 FOOT WIDE AREA;

FROM THE POINT OF BEGINNING; THENCE NORTH 00 DEGREES 00 MINUTES 24. SECONDS EAST, A
222.13 FEET; THENCE NORTH 01 DEGREES 10 MINUTES 47. SECONDS EAST, A DISTANCE OF 277
POINT ON THE SOUTH RAILROAD RIGHT-OF-WAY LINE, SAID POINT ALSO BEING THE POINT OF TERM
CENTERLINE OF EASEMENT, SIDE LINES OF SAID EASEMENT AREA SHOULD BE PROLONGED OR SHC
BEGIN AT THE NORTH LINE OF THE RPR TRACT AND END AT THE SOUTH RIGHT-OF-WAY LINE OF THE

NON-EXCLUSIVE COMMON INGRESS / EGRESS EASEMENT AREA

A PART OF THE NORTHWEST QUARTER AND THE SOUTHEAST QUARTER OF SECTION 9, ALSO PART QUARTER OF SECTION 10, ALL IN TOWNSHIP 8-NORTH, RANGE 7-EAST OF THE FOURTH PRINCIPAL COUNTY, ILLINOIS, BEING MORE PARTICULARLY DESCRIBED AS FOLLOWS:

COMMENCING AT A STONE FOUND AT THE NORTHWEST CORNER OF THE SOUTHEAST QUARTER OF THENCE SOUTH 89 DEGREES 19 MINUTES 26 SECONDS EAST, (BEARINGS ARE FOR DESCRIPTION ALONG THE NORTH LINE OF SAID SOUTHEAST QUARTER, A DISTANCE OF 1,110.50 FEET; THENCE MINUTES 24 SECONDS WEST, A DISTANCE OF 222.11 FEET, TO THE NORTHWEST CORNER OF THE SOUTH 89 DEGREES 19 MINUTES 26 SECONDS EAST, ALONG THE NORTH LINE OF SAID RPR TRAC 577.36 FEET TO THE POINT OF BEGINNING OF THE NON-EXCLUSIVE COMMON INGRESS / EGRESS

FROM THE POINT OF BEGINNING; THENCE NORTH 15 DEGREES 59 MINUTES 17 SECONDS EAST, A FEET; THENCE NORTH 02 DEGREES 00 MINUTES 59 SECONDS EAST, A DISTANCE OF 124.43 FEET; DEGREES 57 MINUTES 22 SECONDS EAST, A DISTANCE OF 147.97 FEET; THENCE SOUTH 85 DEGREES 52 SECONDS EAST, A DISTANCE OF 180.46 FEET; THENCE SOUTH 71 DEGREES 50 MINUTES 00 SECONDS EAST, A DISTANCE OF 335.91 FEET; THENCE SOUTH 73 DEGREES 21 MINUTES 25 SECONDS EAST, A DISTANCE OF 335.91 FEET; THENCE SOUTH 69 DEGREES 56 MINUTES 54 SECONDS EAST, A DISTANCE OF 137.27 FEET; THENCE SOUTH 69 DEGREES 56 MINUTES 54 SECONDS EAST, A DISTANCE OF 48.63 FEET; THENCE SOUTH 64 DEGREES 37 MINUTES 56 SECONDS OF 135.07 FEET, TO A POINT ON THE SOUTH RIGHT-OF-WAY LINE OF THE RAILROAD; THENCE NORTH 07 SECONDS EAST, A DISTANCE OF 67.33 FEET, TO A POINT ON THE NORTH RIGHT-OF-WAY LINE OF THE RAILROAD; THENCE NORTH 04 DEGREES 00 MINUTES 53 SECONDS EAST, A DISTANCE OF 308.7 FEET; RIGHT-OF-WAY LINE OF ROUTE 116 (VALLEY ROAD); THENCE NORTH 89 DEGREES 22 MINUTES 02 SAID SOUTH RIGHT-OF-WAY LINE, A DISTANCE OF 60.20 FEET; THENCE SOUTH 04 DEGREES 00 WEST, A DISTANCE OF 333.93 FEET, TO A POINT ON THE NORTH RIGHT-OF-WAY LINE OF THE RAILROAD; THENCE SOUTH 32 DEGREES 33 SECONDS WEST, A DISTANCE OF 103.80 FEET; THENCE NORTH 04 DEGREES 56 SECONDS WEST, A DISTANCE OF 156.04 FEET; THENCE NORTH 64 DEGREES 52 MINUTES 00 SECONDS WEST, A DISTANCE OF 180.46 FEET; THENCE NORTH 74 DEGREES 21 MINUTES 22 SECONDS WEST, A DISTANCE OF 335.91 FEET; THENCE NORTH 72 DEGREES 00 MINUTES 36 SECONDS WEST, A DISTANCE OF 280.22 FEET; THENCE NORTH 46 DEGREES 28 SECONDS WEST, A DISTANCE OF 263.35 FEET; THENCE NORTH 70 DEGREES 56 SECONDS WEST, A DISTANCE OF 315.52 FEET; THENCE SOUTH 85 DEGREES 23 MINUTES 08 SECONDS WEST, A DISTANCE OF 123.64 FEET; THENCE SOUTH 51 DEGREES 43 MINUTES 17 SECONDS WEST, A DISTANCE OF 123.64 FEET; THENCE SOUTH 30 DEGREES 38 MINUTES 36 SECONDS WEST, A DISTANCE OF 218.28 FEET; SAID RR P&T; THENCE NORTH 00 DEGREES 01 MINUTES 02 SECONDS EAST, ALONG THE SAID TRACT, A DISTANCE OF 41.02 FEET, TO THE NORTHEAST CORNER OF SAID RR P&T; THENCE NORTH 00 DEGREES 26 SECONDS WEST, ALONG THE NORTH LINE OF SAID RR P&T, A DISTANCE OF 11.8 FEET.

SANITARY SEWER EASEMENT AREA

A PART OF THE NORTHEAST QUARTER AND THE SOUTHEAST QUARTER OF SECTION 9, ALSO PART QUARTER OF SECTION 10, ALL IN TOWNSHIP 5 NORTH, RANGE 7 EAST OF THE FOURTH PRINCIPAL COUNTY, ILLINOIS, BEING A STRIP OF LAND 30 FEET WIDE LYING 15 FEET EITHER SIDE OF THE 10 CENTER LINE.

COMMENCING AT A STONE FOUND AT THE NORTHWEST CORNER OF THE SOUTHEAST QUARTER OF
THENCE SOUTH 89 DEGREES 19 MINUTES 26 SECONDS EAST, (BEARINGS ARE FOR DESCRIPTION
ALONG THE NORTH LINE OF SAID SOUTHEAST QUARTER, A DISTANCE OF 1.110.50 FEET, THENCE
MINUTES 24 SECONDS WEST, A DISTANCE OF 222.11 FEET, TO THE NORTHWEST CORNER OF
THE SOUTH 89 DEGREES 19 MINUTES 26 SECONDS EAST, ALONG THE NORTH LINE OF SAID RPR TRACT
514.92 FEET TO THE POINT OF BEGINNING OF THE CENTERLINE OF A 30.00 FOOT WIDE SANITARY
AREA.

FROM THE POINT OF BEGINNING; THENCE NORTH 07 DEGREES 18 MINUTES 15 SECONDS EAST, 15.98 FEET; THENCE NORTH 27 DEGREES 04 MINUTES 46 SECONDS EAST, A DISTANCE OF 95.98 FEET; THENCE NORTH 01 MINUTES 02 SECONDS EAST, A DISTANCE OF 41.15 FEET TO THE POINT OF TERMINATION. SIDE LINES OF SAID EASEMENT AREA SHOULD BE PROLONGED OR SHORTENED SO A NORTH LINE OF THE RPR TRACT.



MOHR & KERR ENGINEERING & LAND SURVEYING, P.C.
7336 N. University Ave. Office: (309) 692-8500
Peoria, Illinois 61614 Fax: (309) 692-8501
www.mohrandkerr.com Professional Design Firm #184.005091

			SURVEYED	MWM / CEJ
			DRAWN	CEJ
			CHECKED	MWM
REV.	DATE	NATURE OF REVISION	CHECKED	SCALE
				N/A
FILE NAME: P-11-077 Orlean Robin Site AltaEP/EXIST MK TOPO 11-077.dwg Dec 27, 2011			DATE	12-27-11

EXCLUSIVE RPR INGRESS / EGRESS EASEMENT AREA

A PART OF THE SOUTHEAST QUARTER OF SECTION 9 AND A PART OF THE SOUTHWEST QUARTER OF SECTION 10, TOWNSHIP-8-NORTH, RANGE-7-EAST OF THE FOURTH PRINCIPAL MERIDIAN, PEORIA COUNTY, ILLINOIS. BEING A STRIP OF LAND 50 FEET WIDE LYING 25 FEET EITHER SIDE OF THE FOLLOWING DESCRIBED CENTER LINE:

COMMENCING AT A STONE FOUND AT THE NORTHWEST CORNER OF THE SOUTHEAST QUARTER OF SAID SECTION 9; THENCE SOUTH 69 DEGREES 19 MINUTES 26 SECONDS EAST, (BEARINGS ARE FOR DESCRIPTION PURPOSES ONLY) ALONG THE NORTH LINE OF SAID SOUTHEAST QUARTER, A DISTANCE OF 1,110.50 FEET; THENCE SOUTH 00 DEGREES 00 MINUTES 24 SECONDS WEST, A DISTANCE OF 222.11 FEET, TO THE NORTHWEST CORNER OF THE RPR TRACT; (THE NEXT 4 COURSES ARE ALONG THE NORTH AND EAST LINES OF THE RPR TRACT) THENCE SOUTH 89 DEGREES 19 MINUTES 26 SECONDS EAST, A DISTANCE OF 589.27 FEET; THENCE SOUTH 00 DEGREES 01 MINUTES 02 SECONDS WEST, A DISTANCE OF 248.97 FEET; THENCE SOUTH 74 DEGREES 14 MINUTES 20 SECONDS EAST, A DISTANCE OF 521.74 FEET; THENCE SOUTH 00 DEGREES 01 MINUTES 02 SECONDS WEST, A DISTANCE OF 276.71 FEET TO THE POINT OF BEGINNING OF THE CENTERLINE OF A 50 FOOT WIDE EXCLUSIVE INGRESS / EGRESS EASEMENT AREA TO BE DESCRIBED;

FROM THE POINT OF BEGINNING; THENCE NORTH 90 DEGREES 00 MINUTES 00 SECONDS EAST, A DISTANCE OF 1,057.69 FEET; THENCE IN A NORTHEASTERLY DIRECTION ALONG A CURVE CONCAVE TO THE NORTHWEST HAVING A RADIUS OF 200.00 FEET AND AN ARC LENGTH OF 93.40 FEET, BEING SUBTENDED BY A CHORD BEARING OF NORTH 76 DEGREES 37 MINUTES 15 SECONDS EAST AND A CHORD LENGTH OF 92.56 FEET, TO A POINT ON THE WEST LINE OF THE NON EXCLUSIVE RPR INGRESS / EGRESS EASEMENT AREA, SAID POINT ALSO BEING THE POINT OF TERMINUS OF SAID CENTERLINE, SIDE LINES OF SAID EASEMENT AREA SHOULD BE PROLONGED OR SHORTENED SO AS TO BEGIN AT THE EAST LINE OF THE RPR TRACT AND END AT SAID WEST LINE OF THE NON-EXCLUSIVE RPR INGRESS / EGRESS EASEMENT AREA.

NON-EXCLUSIVE RPR INGRESS / EGRESS EASEMENT AREA

A PART OF THE NORTHWEST QUARTER AND THE SOUTHEAST QUARTER OF SECTION 9, ALSO PART OF THE SOUTHWEST QUARTER OF SECTION 10, ALL IN TOWNSHIP-8-NORTH, RANGE-7-EAST OF THE FOURTH PRINCIPAL MERIDIAN, PEORIA COUNTY, ILLINOIS. BEING MORE PARTICULARLY DESCRIBED AS FOLLOWS:

COMMENCING AT A STONE FOUND AT THE NORTHWEST CORNER OF THE SOUTHEAST QUARTER OF SAID SECTION 9; THENCE SOUTH 89 DEGREES 19 MINUTES 26 SECONDS EAST, (BEARINGS ARE FOR DESCRIPTION PURPOSES ONLY) ALONG THE NORTH LINE OF SAID SOUTHEAST QUARTER, A DISTANCE OF 1,110.50 FEET; THENCE SOUTH 00 DEGREES 00 MINUTES 24 SECONDS WEST, A DISTANCE OF 222.11 FEET, TO THE NORTHWEST CORNER OF THE RPR TRACT; THENCE SOUTH 89 DEGREES 19 MINUTES 26 SECONDS EAST, ALONG THE NORTH LINE OF SAID RPR TRACT, A DISTANCE OF 577.36 FEET; THENCE NORTH 15 DEGREES 59 MINUTES 17 SECONDS EAST, A DISTANCE OF 76.61 FEET; THENCE NORTH 02 DEGREES 00 MINUTES 59 SECONDS EAST, A DISTANCE OF 124.43 FEET; THENCE NORTH 61 DEGREES 57 MINUTES 22 SECONDS EAST, A DISTANCE OF 147.97 FEET; THENCE SOUTH 85 DEGREES 13 MINUTES 35 SECONDS EAST, A DISTANCE OF 188.46 FEET; THENCE SOUTH 71 DEGREES 50 MINUTES 41 SECONDS EAST, A DISTANCE OF 335.91 FEET; THENCE SOUTH 73 DEGREES 21 MINUTES 25 SECONDS EAST, A DISTANCE OF 604.19 FEET; THENCE SOUTH 69 DEGREES 56 MINUTES 54 SECONDS EAST, A DISTANCE OF 137.27 FEET; THENCE SOUTH 73 DEGREES 39 MINUTES 18 SECONDS EAST, A DISTANCE OF 352.68 FEET; THENCE SOUTH 68 DEGREES 12 MINUTES 09 SECONDS EAST, A DISTANCE OF 49.63 FEET; THENCE SOUTH 84 DEGREES 57 MINUTES 58 SECONDS EAST, A DISTANCE OF 135.07 FEET TO THE POINT OF BEGINNING OF THE NON-EXCLUSIVE RPR INGRESS / EGRESS EASEMENT AREA;

FROM THE POINT OF BEGINNING; THENCE NORTH 22 DEGREES 41 MINUTES 07 SECONDS EAST, A DISTANCE OF 67.33 FEET; THENCE NORTH 04 DEGREES 00 MINUTES 53 SECONDS EAST, A DISTANCE OF 306.79 FEET, TO THE SOUTH RIGHT-OF-WAY LINE OF ROUTE 116 (PLANK ROAD); THENCE NORTH 89 DEGREES 22 MINUTES 02 SECONDS EAST, ALONG SAID SOUTH RIGHT-OF-WAY LINE, A DISTANCE OF 60.20 FEET; THENCE SOUTH 04 DEGREES 00 MINUTES 53 SECONDS WEST, A DISTANCE OF 333.93 FEET; THENCE SOUTH 28 DEGREES 32 MINUTES 04 SECONDS WEST, A DISTANCE OF 103.80 FEET; THENCE SOUTH 30 DEGREES 33 MINUTES 41 SECONDS WEST, A DISTANCE OF 368.34 FEET; THENCE IN A SOUTHWESTERLY DIRECTION ALONG A CURVE CONCAVE TO THE NORTHWEST HAVING A RADIUS OF 225.00 FEET AND AN ARC LENGTH OF 143.32 FEET, BEING SUBTENDED BY A CHORD BEARING OF SOUTH 48 DEGREES 48 MINUTES 36 SECONDS WEST AND A CHORD LENGTH OF 140.91 FEET, TO THE EAST LINE OF THE EXCLUSIVE RPR INGRESS / EGRESS EASEMENT AREA; THENCE NORTH 04 DEGREES 40 MINUTES 40 SECONDS EAST, ALONG SAID EAST LINE, A DISTANCE OF 58.85 FEET; THENCE IN A NORTHEASTERLY DIRECTION ALONG A CURVE CONCAVE TO THE NORTHWEST HAVING A RADIUS OF 175.00 FEET AND AN ARC LENGTH OF 84.08 FEET, BEING SUBTENDED BY A CHORD BEARING OF NORTH 44 DEGREES 19 MINUTES 33 SECONDS EAST AND A CHORD LENGTH OF 83.27 FEET; THENCE NORTH 30 DEGREES 33 MINUTES 41 SECONDS EAST, A DISTANCE OF 344.82 FEET; THENCE NORTH 22 DEGREES 41 MINUTES 07 SECONDS EAST, A DISTANCE OF 52.37 FEET; TO THE POINT OF BEGINNING.

ACCESS EASEMENT FOR R.E.D.A. DESCRIPTION

A PART OF THE SOUTHEAST QUARTER OF SECTION 9; TOWNSHIP-8-NORTH, RANGE-7-EAST OF THE FOURTH PRINCIPAL MERIDIAN, PEORIA COUNTY, ILLINOIS. BEING MORE PARTICULARLY DESCRIBED AS FOLLOWS:

COMMENCING AT THE NORTHEAST CORNER OF THE SOUTHEAST QUARTER OF SAID SECTION 9; THENCE SOUTH 00 DEGREES 00 MINUTES 00 SECONDS EAST, (BEARINGS ARE FOR DESCRIPTION PURPOSES ONLY) ALONG THE EAST LINE OF SAID SOUTHEAST QUARTER, A DISTANCE OF 562.99 FEET TO THE POINT OF BEGINNING OF THE ACCESS EASEMENT TO BE DESCRIBED;

FROM THE POINT OF BEGINNING; THENCE CONTINUING ALONG SAID EAST LINE OF THE SOUTHEAST QUARTER, SOUTH 00 DEGREES 00 MINUTES 00 SECONDS EAST, A DISTANCE OF 45.02 FEET; THENCE NORTH 62 DEGREES 39 MINUTES 12 SECONDS WEST, A DISTANCE OF 379.05 FEET; THENCE NORTH 15 DEGREES 25 MINUTES 34 SECONDS EAST, A DISTANCE OF 81.00 FEET, TO THE NORTH LINE OF AN EXISTING TRACT; THENCE SOUTH 60 DEGREES 34 MINUTES 32 SECONDS EAST, ALONG SAID NORTH LINE, A DISTANCE OF 25.00 FEET; THENCE SOUTH 15 DEGREES 25 MINUTES 34 SECONDS WEST, A DISTANCE OF 39.20 FEET; THENCE SOUTH 62 DEGREES 39 MINUTES 12 SECONDS EAST, A DISTANCE OF 228.63 FEET; THENCE NORTH 27 DEGREES 20 MINUTES 48 SECONDS EAST, A DISTANCE OF 29.77 FEET, TO SAID NORTH LINE OF AN EXISTING TRACT; THENCE SOUTH 60 DEGREES 34 MINUTES 32 SECONDS EAST, ALONG SAID NORTH LINE, A DISTANCE OF 25.00 FEET; THENCE SOUTH 27 DEGREES 20 MINUTES 48 SECONDS WEST, A DISTANCE OF 28.87 FEET; THENCE SOUTH 62 DEGREES 39 MINUTES 12 SECONDS EAST, A DISTANCE OF 86.44 FEET TO THE POINT OF BEGINNING, SUBJECT TO ANY EASEMENTS, RESTRICTIONS AND RIGHT-OF-WAY OF RECORD.

STATE OF ILLINOIS)
COUNTY OF PEORIA) SS

WE, MOHR AND KERR ENGINEERING AND LAND SURVEYING, P.C. DO HEREBY STATE THAT WE HAVE SURVEYED A PART OF THE NORTHEAST QUARTER AND THE SOUTHEAST QUARTER OF SECTION 9, ALSO PART OF THE SOUTHWEST QUARTER OF SECTION 10, ALL IN TOWNSHIP-8-NORTH, RANGE-7-EAST OF THE FOURTH PRINCIPAL MERIDIAN, PEORIA COUNTY, ILLINOIS AND THAT THE LAND SHOWN ON THIS PLAT IS WITHIN 1 AND 1/2 MILES OF THE CORPORATE LIMITS OF A TOWN OR VILLAGE WHICH HAS APPROVED AND ADOPTED A COMPREHENSIVE PLAN AND TO THE BEST OF OUR KNOWLEDGE AND BELIEF, THE ATTACHED PLAT IS A TRUE AND CORRECT REPRESENTATION OF SAID SURVEY AS DRAWN TO A SCALE OF ONE INCH EQUALS 100' (1" = 100').

DATED THIS _____ DAY OF _____, 20____

MOHR AND KERR ENGINEERING AND LAND SURVEYING P.C.

MICHAEL W. MOHR
ILLINOIS REGISTERED PROFESSIONAL LAND SURVEYOR # 035-3116

LICENSE EXPIRES _____

THIS PROFESSIONAL SERVICE CONFORMS TO THE CURRENT ILLINOIS MINIMUM STANDARDS FOR A BOUNDARY SURVEY.

NOTES:

1. IT IS NOT WARRANTED THAT THIS PLAT CONTAINS COMPLETE INFORMATION REGARDING EASEMENTS, RESERVATIONS, RESTRICTIONS, RIGHT-OF-WAY, BUILDING SETBACK LINES AND OTHER ENCUMBRANCES. FOR COMPLETE INFORMATION, A TITLE OPINION OR OTHER COMMITMENT FOR TITLE INSURANCE SHOULD BE OBTAINED.
2. BEARINGS ARE FOR DESCRIPTION PURPOSES ONLY.
3. FIELD WORK COMPLETED NOVEMBER 14, 2011.
4. PROPERTY SHOWN HEREON IS LOCATED IN ZONE C (AREAS OF MINIMAL FLOODING) PER FLOOD INSURANCE RATE MAP NUMBER 170533 0175 B WITH A MAP REVISION DATE OF JUNE 1, 1983.

STATE OF _____)
COUNTY OF _____) SS

REAL ESTATE DEVELOPMENT ASSOCIATES, LLC, OWNER(S) OF RECORD OF THE LAND SHOWN IN THE ATTACHED PLAT, DOES HEREBY AUTHORIZE AND ACKNOWLEDGE THE SURVEY OF THE LAND AS DESCRIBED IN THE ACCOMPANYING LEGAL DESCRIPTION, ALSO TO THE BEST OF OUR KNOWLEDGE THE DESCRIBED PARCEL IS LOCATED IN Limestone HIGH SCHOOL DISTRICT NO. 310 AND NORWOOD GRADE SCHOOL DISTRICT NO. 63.

GIVEN UNDER MY HAND AND SEAL THIS _____ DAY OF _____, 20____

REAL ESTATE DEVELOPMENT ASSOCIATES, LLC,

BY: _____
ITS: _____

NOTARY PUBLIC

SUBSCRIBED AND SWORN TO BEFORE ME THIS _____ DAY OF _____, 20____

NOTARY PUBLIC

STATE OF ILLINOIS)
COUNTY OF PEORIA) SS

I HEREBY CERTIFY THAT I FIND NO DELINQUENT TAXES, UNPAID CURRENT TAXES, DELINQUENT SPECIAL ASSESSMENTS OR UNPAID CURRENT SPECIAL ASSESSMENTS AGAINST ANY OF THE REAL ESTATE EMBRACED IN THE ATTACHED PLAT OF SURVEY AND DESCRIPTION.

GIVEN UNDER MY HAND AND SEAL THIS _____ DAY OF _____, 20____

COUNTY CLERK DEPUTY

STATE OF ILLINOIS)
COUNTY OF PEORIA) SS

THIS TRACT SURVEY IS HEREBY APPROVED IN ACCORDANCE WITH THE PROVISIONS OF THE PLAT ACT OF ILLINOIS (55 ILCS 5/5-104.1) AND CHAPTER 20 OF THE PEORIA COUNTY CODE. IT IS IN CONFORMANCE WITH THE GOALS AND OBJECTIVES OF THE COUNTY'S LAND USE MANAGEMENT PLAN.

GIVEN UNDER MY HAND AND SEAL THIS _____ DAY OF _____, 20____

PEORIA COUNTY PLAT OFFICER

CLIENT:

RPR PROPERTIES, LLC

TITLE:

PLAT OF SURVEY

A PART OF THE NORTHEAST QUARTER AND THE SOUTHEAST QUARTER OF SECTION 9, ALSO PART OF THE SOUTHWEST QUARTER OF SECTION 10, ALL IN TOWNSHIP-8-NORTH, RANGE-7-EAST OF THE FOURTH PRINCIPAL MERIDIAN, PEORIA COUNTY, ILLINOIS.

PROJECT NO.

11-077

SHEET 3 OF 3

DRAWING NO.

3