

2700 NW Sherlock Avenue, Portland, OR 97210

FOR LEASE



## NW PORTLAND INDUSTRIAL OPPORTUNITY

### OFFERING SUMMARY

**Available SF:** Fully Leased

**Office SF:** First Floor: 960 SF  
Second Floor: 960 SF

**Lease Rate:** \$8,000 per month  
(NNN)  
Plus NNN's

**Clear Height:** 22'

**Sprinklers:** Yes

**Zoning:** IH, Heavy Industrial

### PROPERTY OVERVIEW

Endcap warehouse available in great NW Portland location, immediately off of NW Front Avenue.

### PROPERTY HIGHLIGHTS

- Easy access to I-405, Highway 30 and I-5
- Concrete tilt construction and T-5 lighting



**Joe Curran**  
503.616.0992  
jcurran@macadamforbes.com  
Licensed in OR & WA

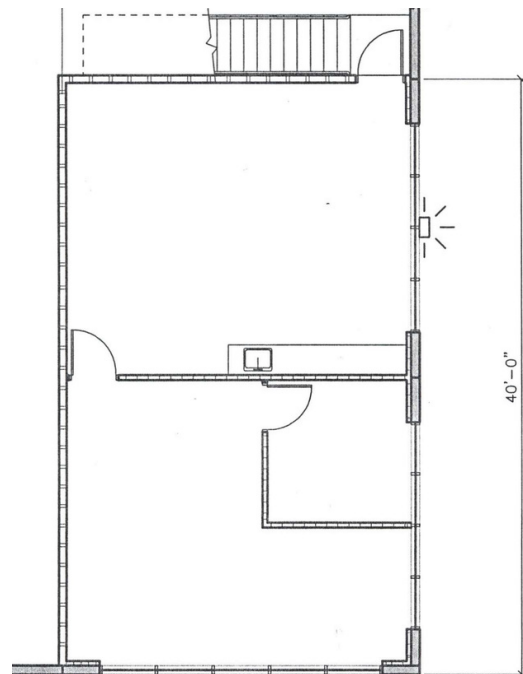
**Todd Collins**  
503.972.7283  
todd@macadamforbes.com  
Licensed in OR & WA

All of the information contained herein was obtained either from the owner or other parties we consider reliable. We have no reason to doubt its accuracy, however we do not guarantee it.

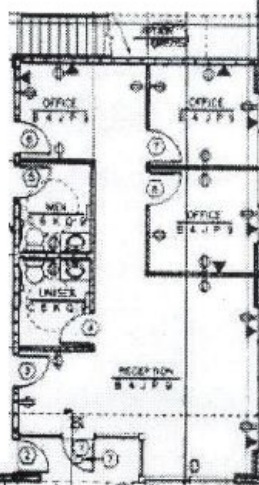
MACADAMFORBES.COM | 503.227.2500

# FOR LEASE

2700 NW Sherlock Avenue, Portland, OR 97210



Second Floor Office Plan



First Floor Plan



Endcap Available



**Joe Curran**  
503.616.0992  
jcurran@macadamforbes.com  
Licensed in OR & WA

**Todd Collins**  
503.972.7283  
todd@macadamforbes.com  
Licensed in OR & WA

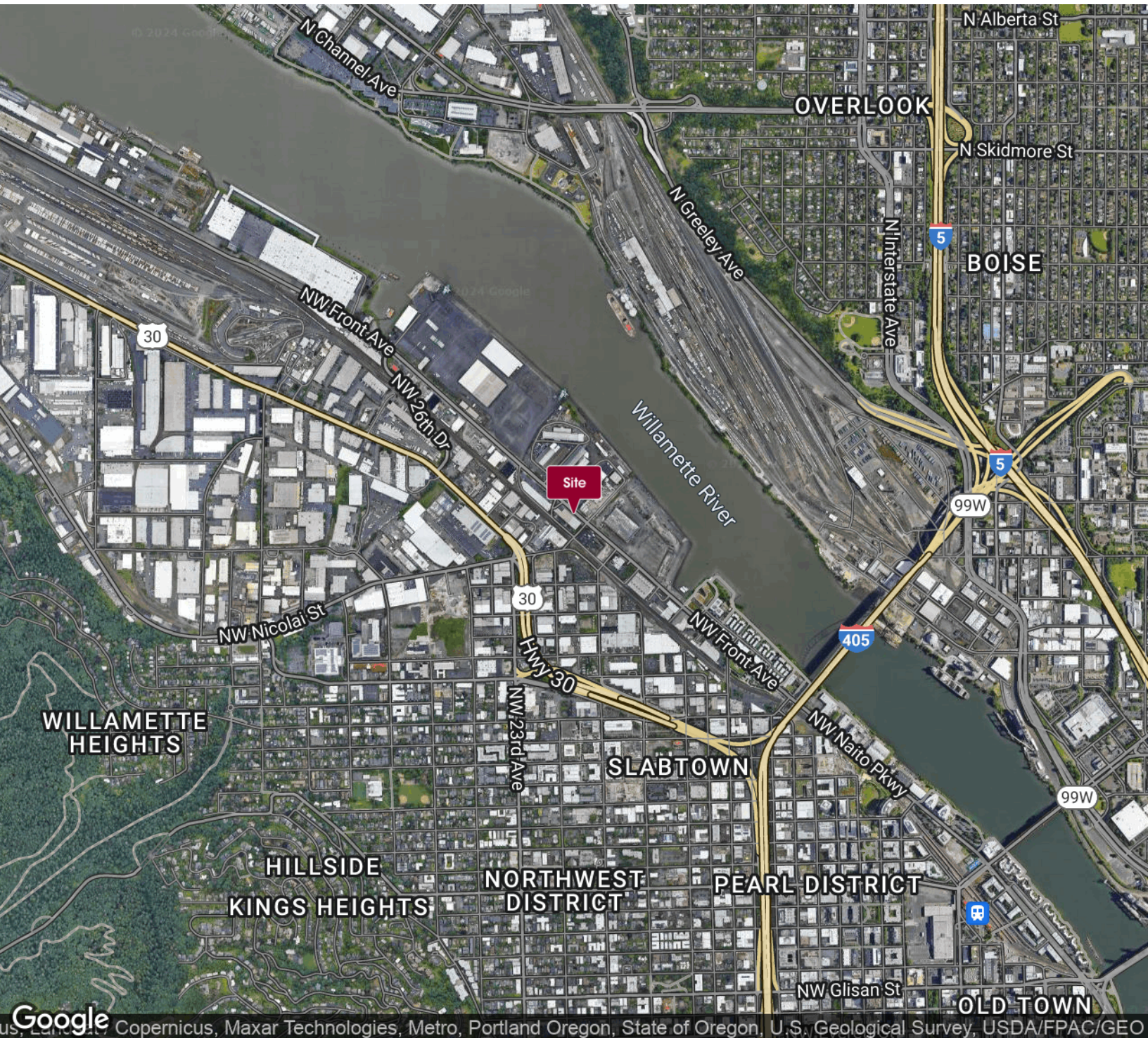
All of the information contained herein was obtained either from the owner or other parties we consider reliable. We have no reason to doubt its accuracy, however we do not guarantee it.

MACADAMFORBES.COM | 503.227.2500



2700 NW Sherlock Avenue, Portland, OR 97210

FOR LEASE



**Joe Curran**  
503.616.0992  
jcurran@macadamforbes.com  
Licensed in OR & WA

**Todd Collins**  
503.972.7283  
todd@macadamforbes.com  
Licensed in OR & WA

All of the information contained herein was obtained either from the owner or other parties we consider reliable. We have no reason to doubt its accuracy, however we do not guarantee it.

MACADAMFORBES.COM | 503.227.2500