

Investment Property For Sale

Office Building

5,966 SF | \$795,000



Office Building For Sale

1414 Piedmont Drive E
Tallahassee, Florida 32308

Property Description:

Property Highlights:

Well built brick office building located in one of Tallahassee's finest office parks with convenient NE location near I-10 right off Thomasville Road. Individual offices and open work space available. There is an elevator in the building as well as a break room, conference, and server room on each floor. Could be single or multi-tenants.



For more information

Frank L. Langston, CCIM

O: 850 224 2300
frank@talcor.com



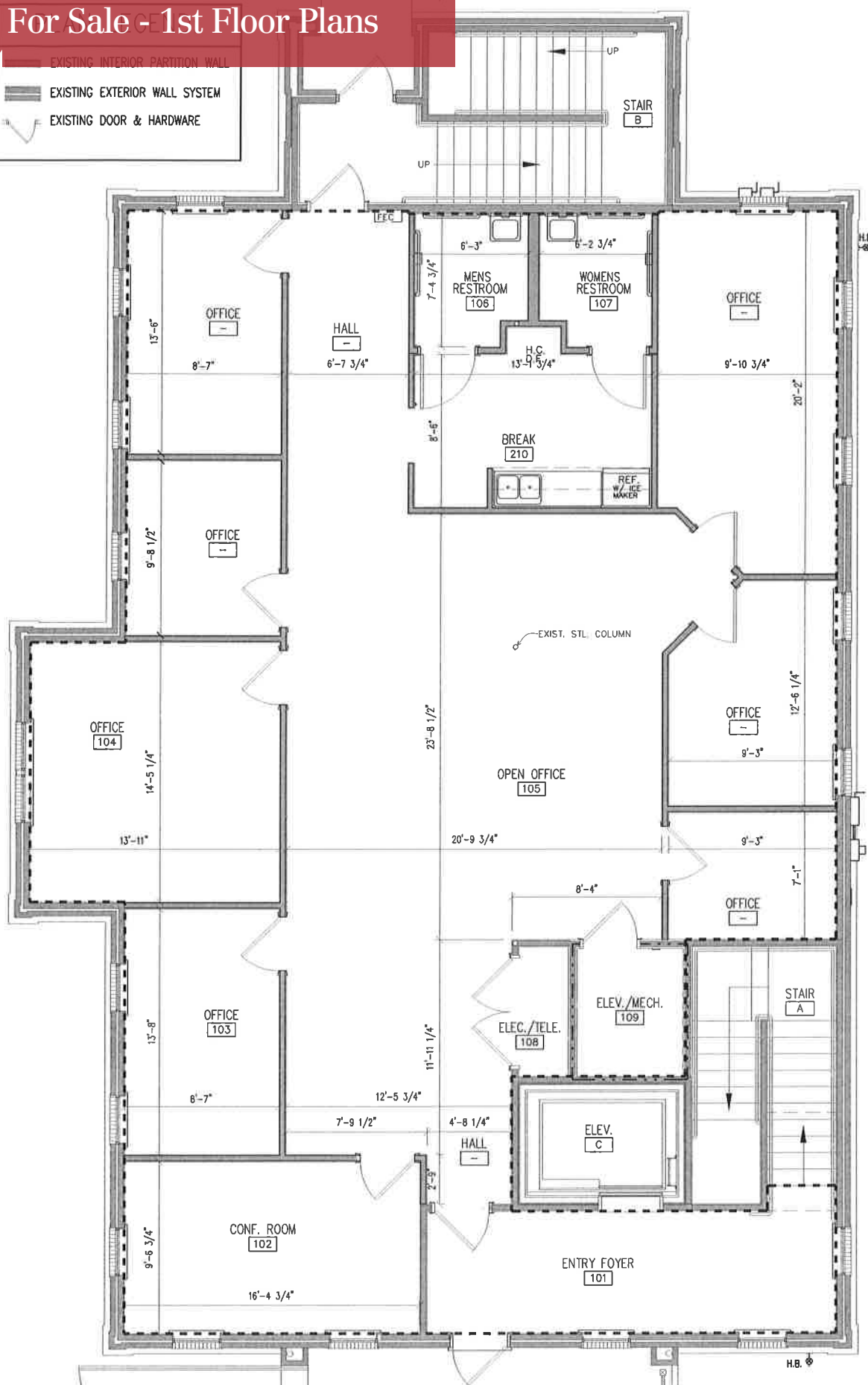
NO WARRANTY OR REPRESENTATION, EXPRESS OR IMPLIED, IS MADE AS TO THE ACCURACY OF THE INFORMATION CONTAINED HEREIN, AND THE SAME IS SUBMITTED SUBJECT TO ERRORS, OMISSIONS, CHANGE OF PRICE, RENTAL OR OTHER CONDITIONS, PRIOR SALE, LEASE OR FINANCING, OR WITHDRAWAL WITHOUT NOTICE, AND OF ANY SPECIAL LISTING CONDITIONS IMPOSED BY OUR PRINCIPALS. NO WARRANTIES OR REPRESENTATIONS ARE MADE AS TO THE CONDITION OF THE PROPERTY OR ANY HAZARDS CONTAINED THEREIN ARE ANY TO BE IMPLIED.

1018 Thomasville Road, Suite 200A,
Tallahassee, FL 32303
850 224 2300 tel
talcor.com



For Sale - 1st Floor Plans

- EXISTING INTERIOR PARTITION WALL
- EXISTING EXTERIOR WALL SYSTEM
- EXISTING DOOR & HARDWARE



EMO
ARCHITECTS, INC.
1126 Thomasville Road
Tallahassee, Florida 32303-6272
Telephone: 850-222-8000
www.EMO-ARC.com

THIS DRAWING AND ANY REPRODUCING ARE THE PROPERTY AND COPYRIGHT OF EMO/ARCHITECTS, INC. AND MAY NOT BE REPRODUCED, PUBLISHED, OR USED IN ANY MANNER WITHOUT THE WRITTEN PERMISSION OF THE ARCHITECT.
Copyright © 2012 EMO/ARCHITECTS, INC.

CCM INVESTMENTS, INC.
1414 PIEDMONT DRIVE EAST
TALLAHASSEE, FLORIDA

DESIGNED: ROBERT IHASZ
DRAWN: DOUG GARTHWAIT
CHECKED: W.A.EMO, AIA
PROJ. NO. E107.12

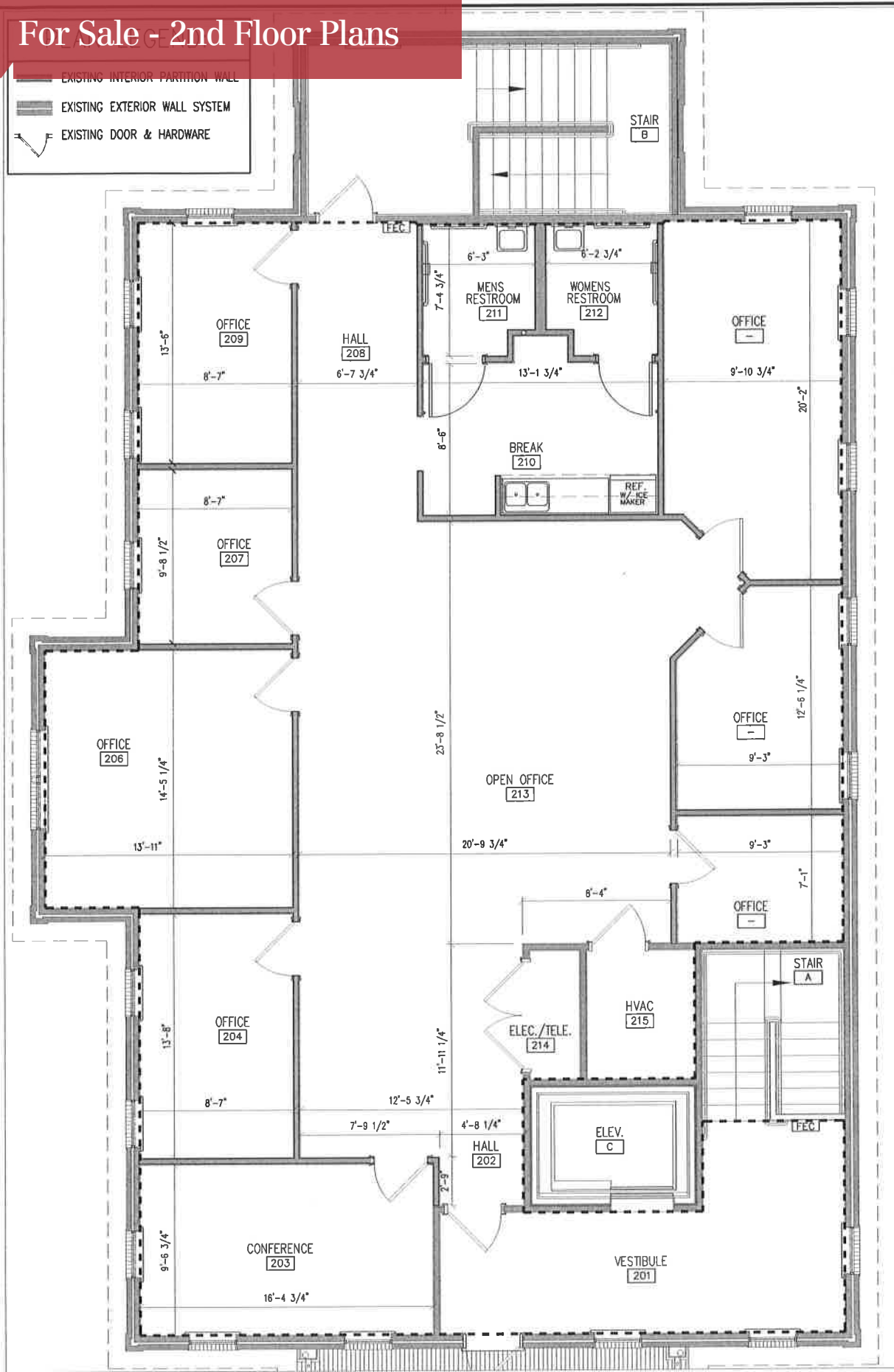
REVISIONS		
REV	DATE	DESCRIPTION
1	-	-
2	-	-
3	-	-
4	-	-
5	-	-

DRAWING PHASE
**EXISTING
CONDITIONS**

DRAWING TITLE
**FIRST FLOOR
PLAN**

For Sale - 2nd Floor Plans

- EXISTING INTERIOR PARTITION WALL
- EXISTING EXTERIOR WALL SYSTEM
- EXISTING DOOR & HARDWARE



EMO
ARCHITECTS, INC.
1126 Thomasville Road
Tallahassee, Florida 32303-6272
Telephone: 850-222-8000
www.EMO-ArC.com

THIS DRAWING AND ANY REPRODUCTIONS ARE THE PROPERTY AND COPYRIGHT OF EMO/ARCHITECTS, INC. AND MAY NOT BE REPRODUCED, PUBLISHED, OR USED IN ANY MANNER WITHOUT THE WRITTEN PERMISSION OF THE ARCHITECT.
Copyright © 2012 EMO/ARCHITECTS, INC.

CCM INVESTMENTS, INC.
1414 PIEDMONT DRIVE EAST
TALLAHASSEE, FLORIDA

DESIGNED: ROBERT INASZ
DRAWN: DOUG GARTHWAIT
CHECKED: W.A.EMO, AIA
PROJ. NO. E107.12

REVISIONS		
REV	DATE	DESCRIPTION
1		
2		
3		
4		
5		
6		
7		
8		
9		
10		

DRAWING PHASE
EXISTING CONDITIONS

DRAWING TITLE
SECOND FLOOR PLAN