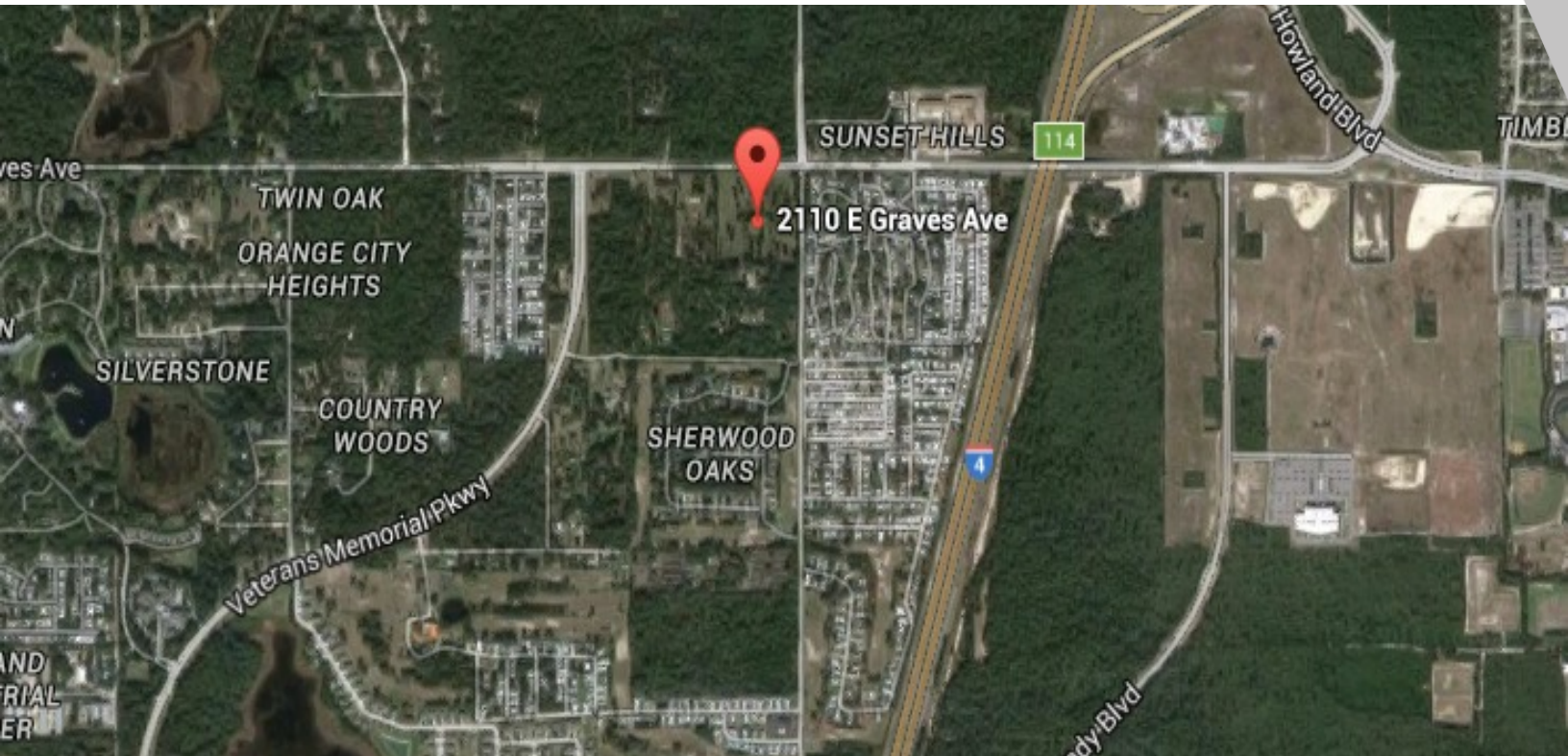


LAND FOR SALE

MIXED-USE DEVELOPMENT OPPORTUNITY - 37.71 ACRES

2110 East Graves Avenue, Orange City, FL 32763



SALE PRICE:	Accepting Offers
PRICE / ACRE:	
GROSS SIZE:	37.71 Acres
MUNICIPALITY	Orange City
ZONING:	PUD
CROSS STREETS:	Veterans Memorial Parkway Kentucky Avenue
TRAFFIC COUNT:	17,160 AADT - Graves Avenue

PROPERTY OVERVIEW

Mixed-use Development Opportunity; 37.71 acres; PD zoning allows for flexibility in residential and commercial development components. The residential component has flexible density depending on product type. A portion of the site is at the signalized corner of Graves Avenue and Kentucky Avenue. This is an excellent mixed-use development opportunity.

PROPERTY FEATURES

- High traffic location - signalized corner/intersection
- Close proximity to I-4 interchange (111B)
- 1.2 miles southwest of proposed Deltona Halifax Health hospital site
- 2.6 miles northeast of Orange City primary commercial district and Florida Hospital Fish Memorial facility
- 1,443 ft frontage on Graves Avenue & over 400 ft of frontage along Veterans Memorial Highway
- PUD zoning - residential & commercial development

KW COMMERCIAL
1918 SE 17th Street
Ocala, FL 34471

DALE DONOVAN
Managing Director
O: 407.491.0005
C: 407.491.0005
ddonovan@kwcommercial.com
FL #1046923

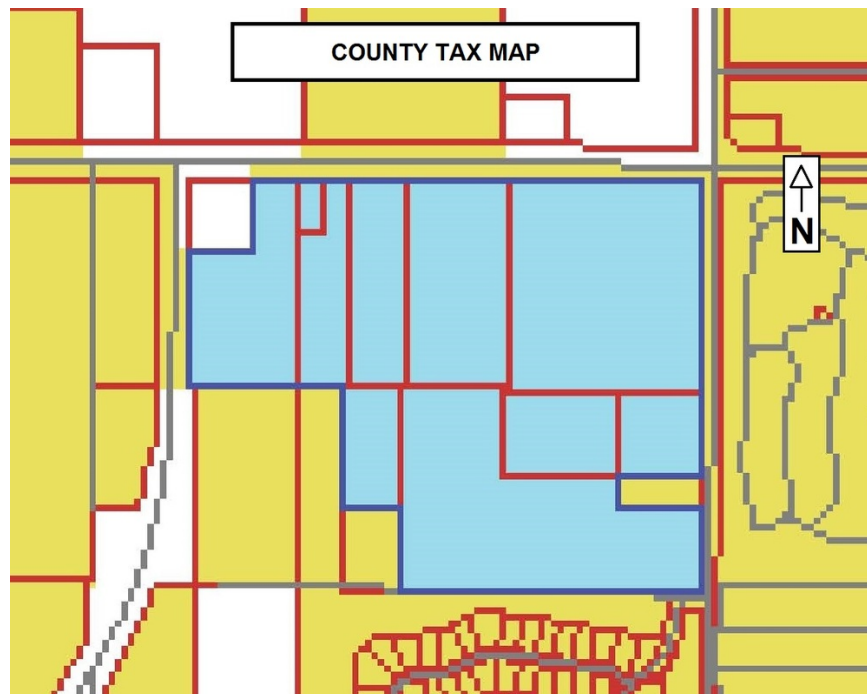
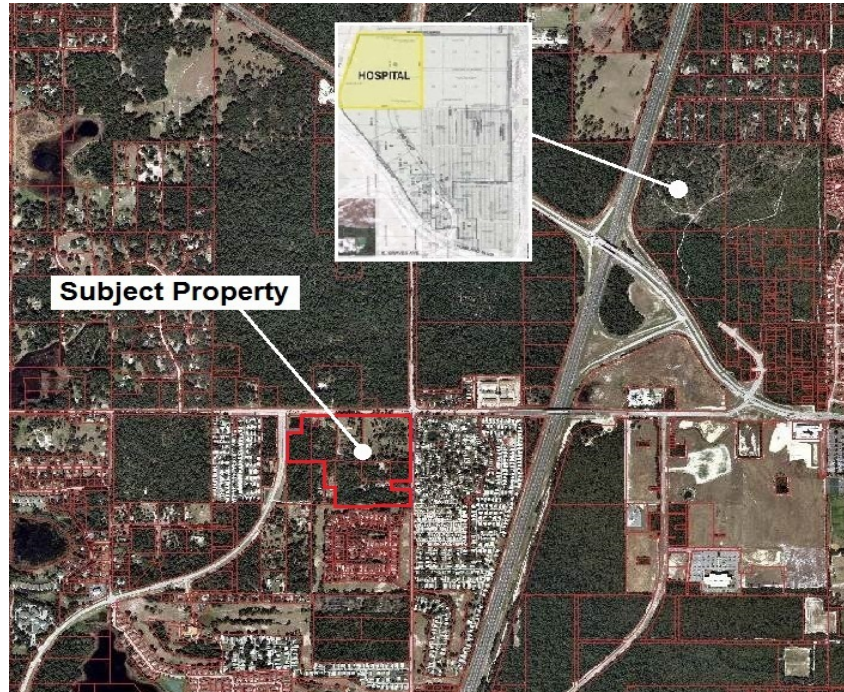
We obtained the information above from sources we believe to be reliable. However, we have not verified its accuracy and make no guarantee, warranty or representation about it. It is submitted subject to the possibility of errors, omissions, change of price, rental or other conditions, prior sale, lease or financing, or withdrawal without notice. We include projections, opinions, assumptions or estimates for example only, and they may not represent current or future performance of the property. You and your tax and legal advisors should conduct your own investigation of the property and transaction.

Each Office Independently Owned and Operated kwcommercial.com

LAND FOR SALE

MIXED-USE DEVELOPMENT OPPORTUNITY

2110 East Graves Avenue, Orange City, FL 32763



KW COMMERCIAL
1918 SE 17th Street
Ocala, FL 34471

DALE DONOVAN
Managing Director
O: 407.491.0005
C: 407.491.0005
ddonovan@kwcommercial.com
FL #1046923

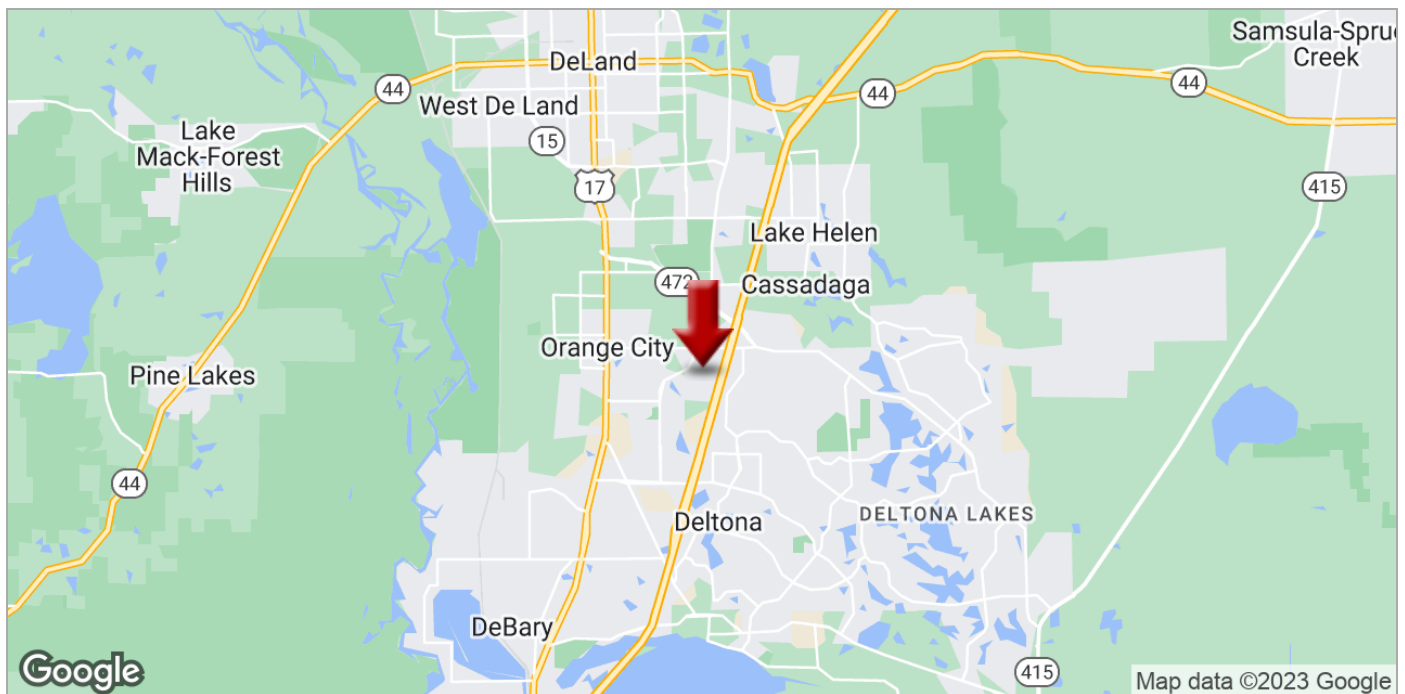
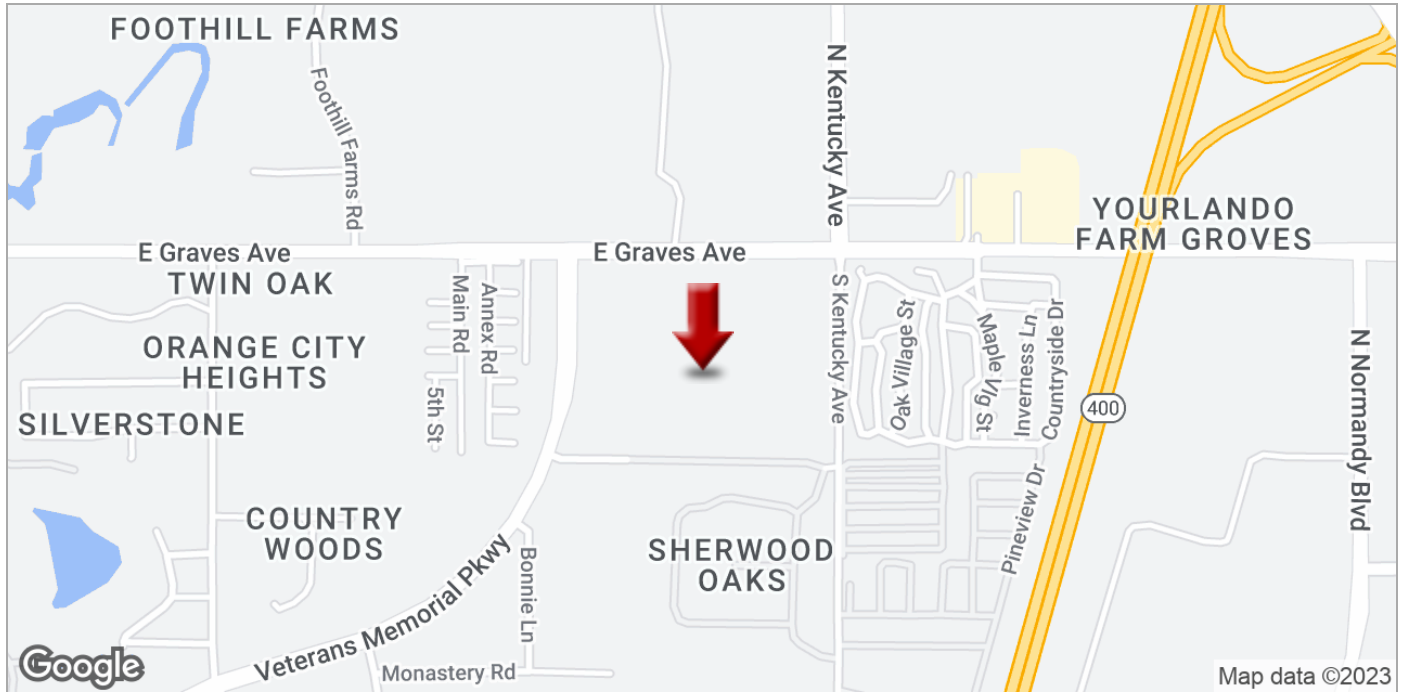
We obtained the information above from sources we believe to be reliable. However, we have not verified its accuracy and make no guarantee, warranty or representation about it. It is submitted subject to the possibility of errors, omissions, change of price, rental or other conditions, prior sale, lease or financing, or withdrawal without notice. We include projections, opinions, assumptions or estimates for example only, and they may not represent current or future performance of the property. You and your tax and legal advisors should conduct your own investigation of the property and transaction.

Each Office Independently Owned and Operated kwcommercial.com

LAND FOR SALE

MIXED-USE DEVELOPMENT OPPORTUNITY

2110 East Graves Avenue, Orange City, FL 32763



KW COMMERCIAL
1918 SE 17th Street
Ocala, FL 34471

DALE DONOVAN
Managing Director
O: 407.491.0005
C: 407.491.0005
ddonovan@kwcommercial.com
FL #1046923

We obtained the information above from sources we believe to be reliable. However, we have not verified its accuracy and make no guarantee, warranty or representation about it. It is submitted subject to the possibility of errors, omissions, change of price, rental or other conditions, prior sale, lease or financing, or withdrawal without notice. We include projections, opinions, assumptions or estimates for example only, and they may not represent current or future performance of the property. You and your tax and legal advisors should conduct your own investigation of the property and transaction.

Each Office Independently Owned and Operated kwcommercial.com

LAND FOR SALE

MIXED-USE DEVELOPMENT OPPORTUNITY

2110 East Graves Avenue, Orange City, FL 32763



KW COMMERCIAL
1918 SE 17th Street
Ocala, FL 34471

DALE DONOVAN
Managing Director
O: 407.491.0005
C: 407.491.0005
ddonovan@kwcommercial.com
FL #1046923

We obtained the information above from sources we believe to be reliable. However, we have not verified its accuracy and make no guarantee, warranty or representation about it. It is submitted subject to the possibility of errors, omissions, change of price, rental or other conditions, prior sale, lease or financing, or withdrawal without notice. We include projections, opinions, assumptions or estimates for example only, and they may not represent current or future performance of the property. You and your tax and legal advisors should conduct your own investigation of the property and transaction.

Each Office Independently Owned and Operated kwcommercial.com

LAND FOR SALE

MIXED-USE DEVELOPMENT OPPORTUNITY

2110 East Graves Avenue, Orange City, FL 32763



KW COMMERCIAL
1918 SE 17th Street
Ocala, FL 34471

DALE DONOVAN
Managing Director
O: 407.491.0005
C: 407.491.0005
ddonovan@kwcommercial.com
FL #1046923

We obtained the information above from sources we believe to be reliable. However, we have not verified its accuracy and make no guarantee, warranty or representation about it. It is submitted subject to the possibility of errors, omissions, change of price, rental or other conditions, prior sale, lease or financing, or withdrawal without notice. We include projections, opinions, assumptions or estimates for example only, and they may not represent current or future performance of the property. You and your tax and legal advisors should conduct your own investigation of the property and transaction.

Each Office Independently Owned and Operated kwcommercial.com

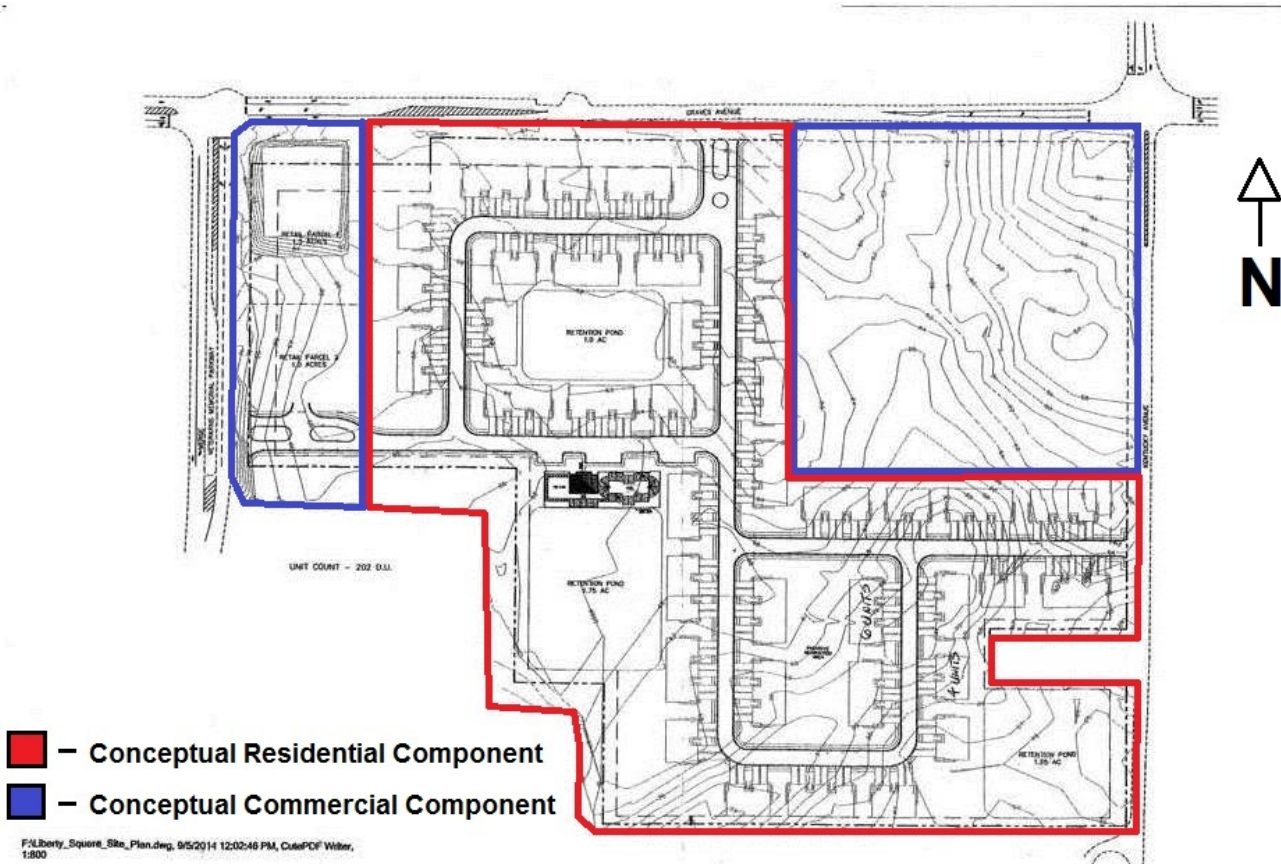
LAND FOR SALE

MIXED-USE DEVELOPMENT OPPORTUNITY

2110 East Graves Avenue, Orange City, FL 32763



CONCEPTUAL PLAN A



KW COMMERCIAL
1918 SE 17th Street
Ocala, FL 34471

DALE DONOVAN
Managing Director
O: 407.491.0005
C: 407.491.0005
ddonovan@kwcommercial.com
FL #1046923

We obtained the information above from sources we believe to be reliable. However, we have not verified its accuracy and make no guarantee, warranty or representation about it. It is submitted subject to the possibility of errors, omissions, change of price, rental or other conditions, prior sale, lease or financing, or withdrawal without notice. We include projections, opinions, assumptions or estimates for example only, and they may not represent current or future performance of the property. You and your tax and legal advisors should conduct your own investigation of the property and transaction.

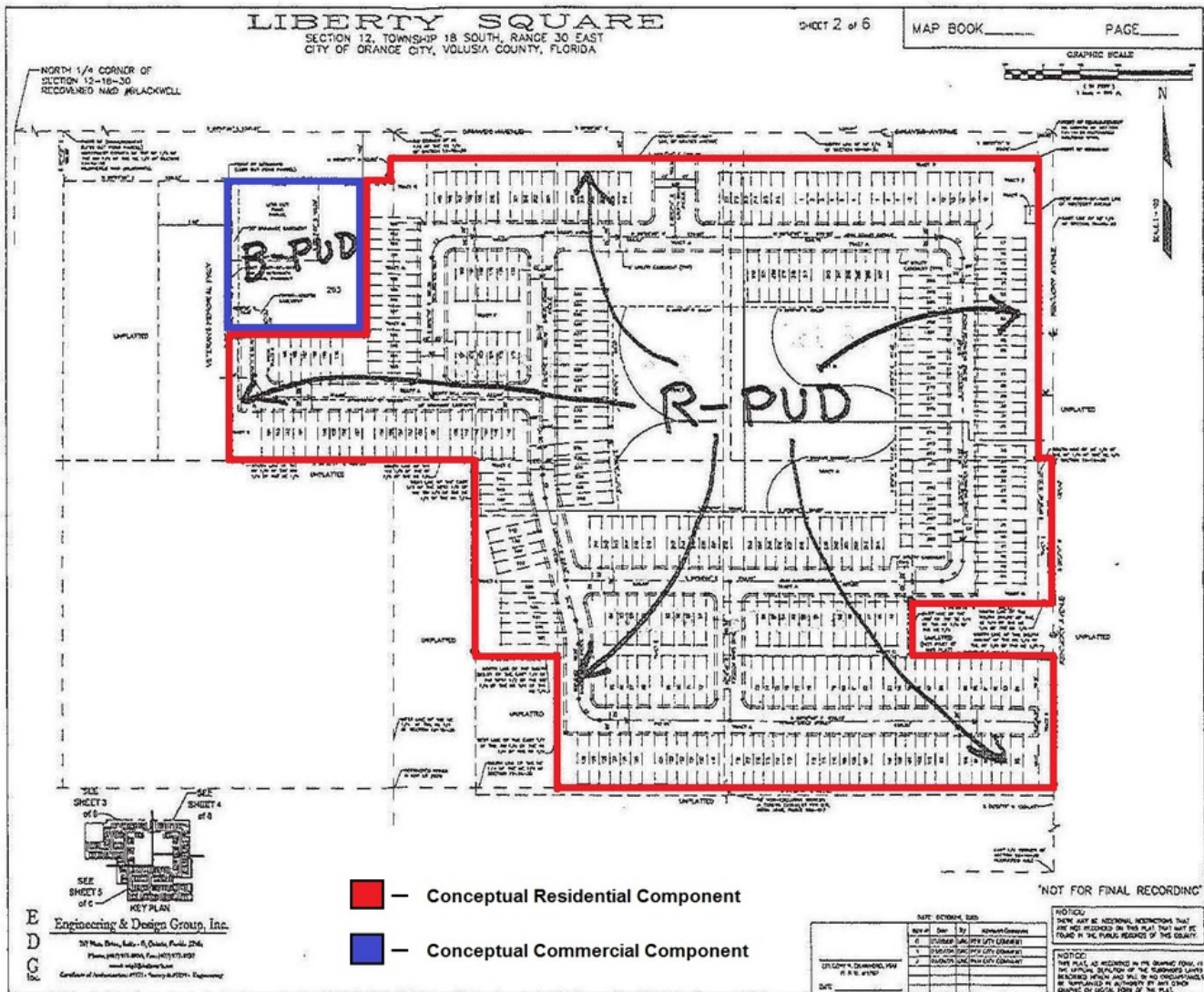
Each Office Independently Owned and Operated kwcommercial.com

MIXED-USE DEVELOPMENT OPPORTUNITY

2110 East Graves Avenue, Orange City, FL 32763



CONCEPTUAL PLAN B



KW COMMERCIAL
1918 SE 17th Street
Ocala, FL 34471

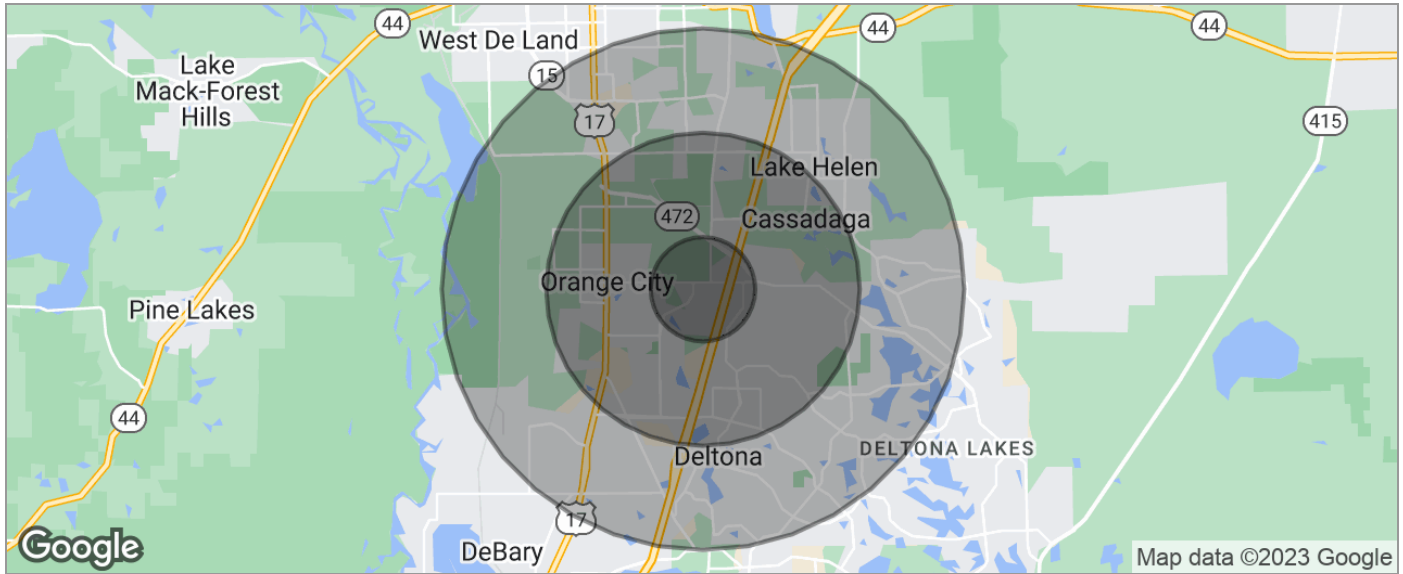
DALE DONOVAN
Managing Director
O: 407.491.0005
C: 407.491.0005
ddonovan@kwcommercial.com
FL #1046923

We obtained the information above from sources we believe to be reliable. However, we have not verified its accuracy and make no guarantee, warranty or representation about it. It is submitted subject to the possibility of errors, omissions, change of price, rental or other conditions, prior sale, lease or financing, or withdrawal without notice. We include projections, opinions, assumptions or estimates for example only, and they may not represent current or future performance of the property. You and your tax and legal advisors should conduct your own investigation of the property and transaction.

Each Office Independently Owned and Operated kwcommercial.com

LAND FOR SALE

2110 East Graves Avenue, Orange City, FL 32763



POPULATION	1 MILE	3 MILES	5 MILES
TOTAL POPULATION	3,755	33,417	93,418
MEDIAN AGE	56.4	44.4	42.5
MEDIAN AGE (MALE)	55.7	43.2	40.9
MEDIAN AGE (FEMALE)	58.9	45.8	43.9
HOUSEHOLDS & INCOME	1 MILE	3 MILES	5 MILES
TOTAL HOUSEHOLDS	1,804	13,488	36,406
# OF PERSONS PER HH	2.1	2.5	2.6
AVERAGE HH INCOME	\$52,147	\$56,002	\$57,225
AVERAGE HOUSE VALUE	\$134,014	\$184,641	\$202,138
RACE	1 MILE	3 MILES	5 MILES
% WHITE	92.2%	83.4%	81.4%
% BLACK	3.0%	7.2%	8.1%
% ASIAN	1.1%	1.6%	1.6%
% HAWAIIAN	0.0%	0.0%	0.0%
% INDIAN	1.0%	0.8%	0.4%
% OTHER	1.4%	4.0%	5.9%
ETHNICITY	1 MILE	3 MILES	5 MILES
% HISPANIC	9.2%	20.4%	21.3%

* Demographic data derived from 2020 ACS - US Census

KW COMMERCIAL
1918 SE 17th Street
Ocala, FL 34471

DALE DONOVAN
Managing Director
O: 407.491.0005
C: 407.491.0005
ddonovan@kwcommercial.com
FL #1046923

We obtained the information above from sources we believe to be reliable. However, we have not verified its accuracy and make no guarantee, warranty or representation about it. It is submitted subject to the possibility of errors, omissions, change of price, rental or other conditions, prior sale, lease or financing, or withdrawal without notice. We include projections, opinions, assumptions or estimates for example only, and they may not represent current or future performance of the property. You and your tax and legal advisors should conduct your own investigation of the property and transaction.

Each Office Independently Owned and Operated kwcommercial.com