

# CLOSE-IN SE CREATIVE SPACE

726 - 728 SE 20th Avenue, Portland, OR 97214



For More Information, Contact:

**Seth Platsman**

503.416.0091

[seth@macadamforbes.com](mailto:seth@macadamforbes.com)

Licensed in OR

2 Centerpointe Drive, Suite 500 | Lake Oswego, OR 97035

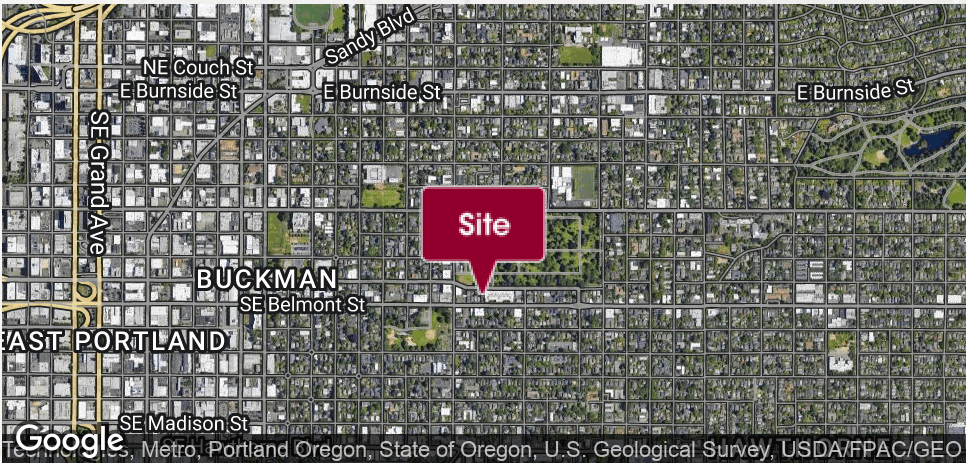
[MACADAMFORBES.COM](http://MACADAMFORBES.COM) | 503.227.2500

All of the information contained herein was obtained either from the owner or other parties we consider reliable. We have no reason to doubt its accuracy, however we do not guarantee it.

**FOR LEASE**







OFFERING SUMMARY

Lease Rate:	Negotiable
Available Space:	2,040 SF
Renovated:	2019
Zoning:	CM2
Ceiling Height:	10'
NNN's:	\$1.57/SF
Market:	Portland
Submarket:	Close in SE

PROPERTY OVERVIEW

Creative space suitable for a wide array of businesses and features an exposed wooden ceiling, new HVAC unit and ducting, light fixtures, bathrooms, windows, flooring, roofs, paint, etc.

LOCATION OVERVIEW

Located in the heart of SE Portland, this property is in close proximity to cafes, restaurants, shopping amenities, and transit. The availability is in walking distance to the Hawthorne, Belmont and East Burnside districts, which are home to popular eateries including Screen Door, Tusk, Nostrana, and Blackbird, as well as developments such as Washington High School.





SUITE	SIZE (SF)	LEASE TYPE	LEASE RATE	DESCRIPTION
-------	-----------	------------	------------	-------------

