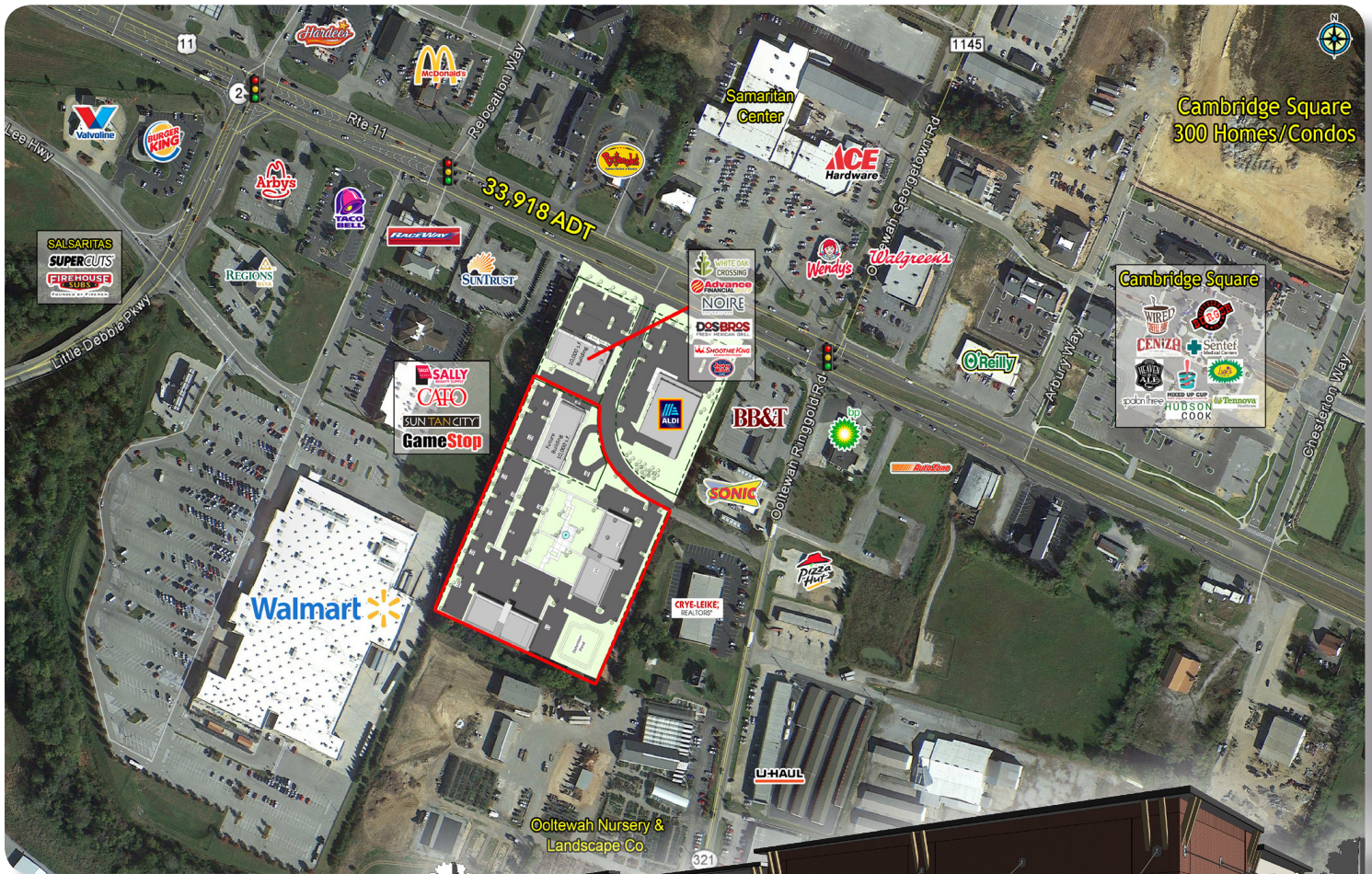




9232 LEE HIGHWAY, OOLTEWAH, TN



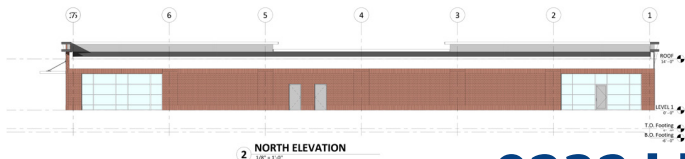
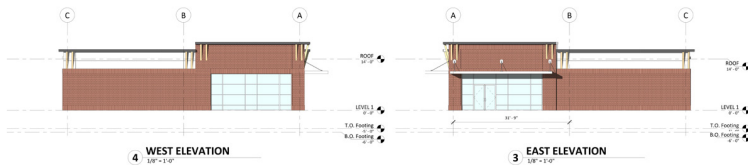
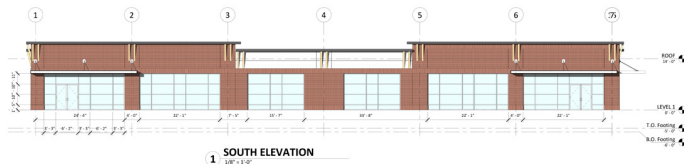
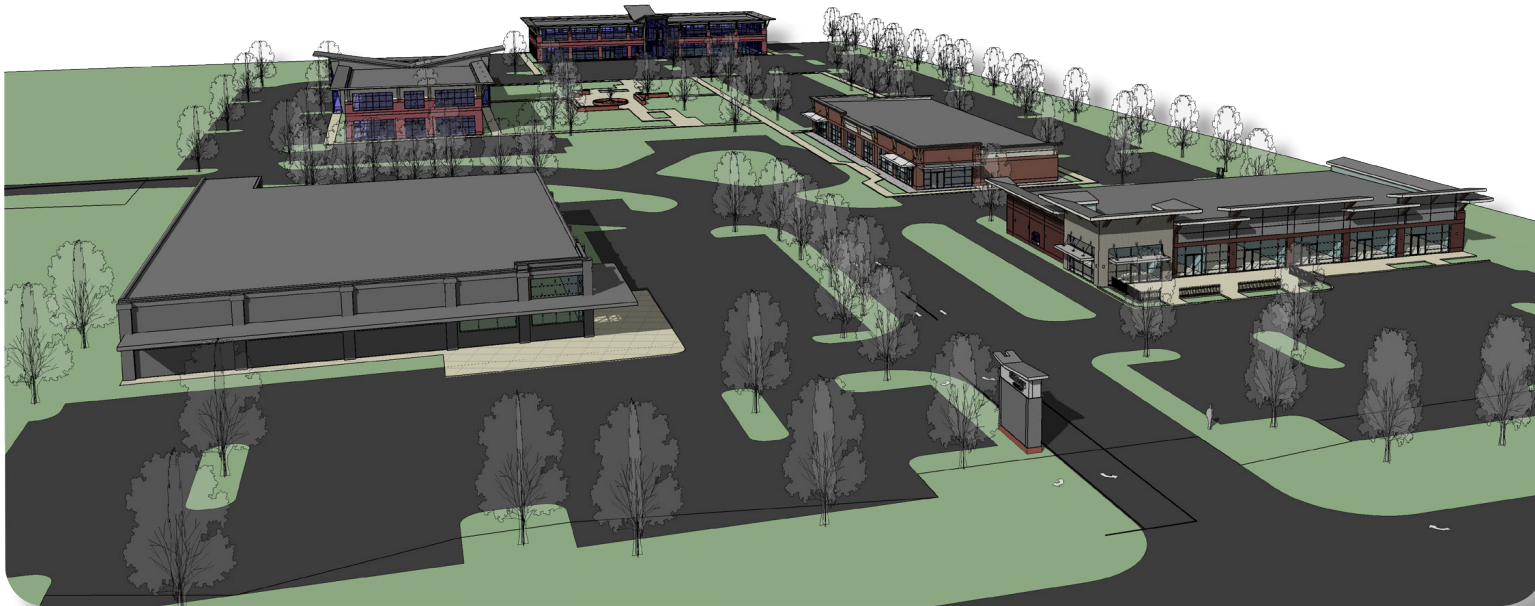
PROPERTY FEATURES



- » Owner/Developer is open to BTS, land lease, joint venture, or possible sale of the additional 6+ tracts.
- » Adjacent to the Walmart with frontage & visibility on Lee Highway
- » Approximately a half mile from I-75
- » Site is directly across from new class A apartments and medical office
- » This property is ideal for hospitality, medical, office, or retail.
- » Collegedale/Ooltewah is the 3rd fastest growing city in the state for 2019. Growth at 37.4%

Avison Young | Knoxville
630 South Concord Street, Knoxville, TN 37919
avisonyoung.com

Brande Benson
865.450.8883
brande.benson@avisonyoung.com



9232 LEE HIGHWAY, OOLTEWAH, TN

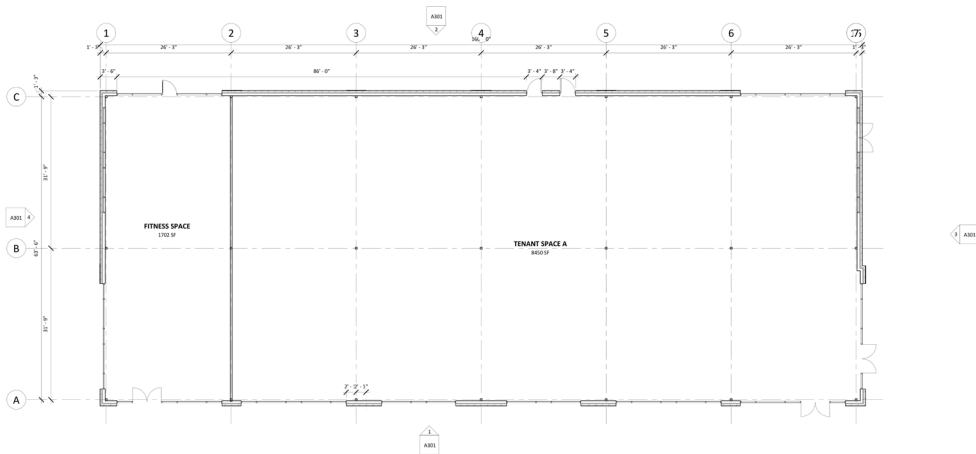
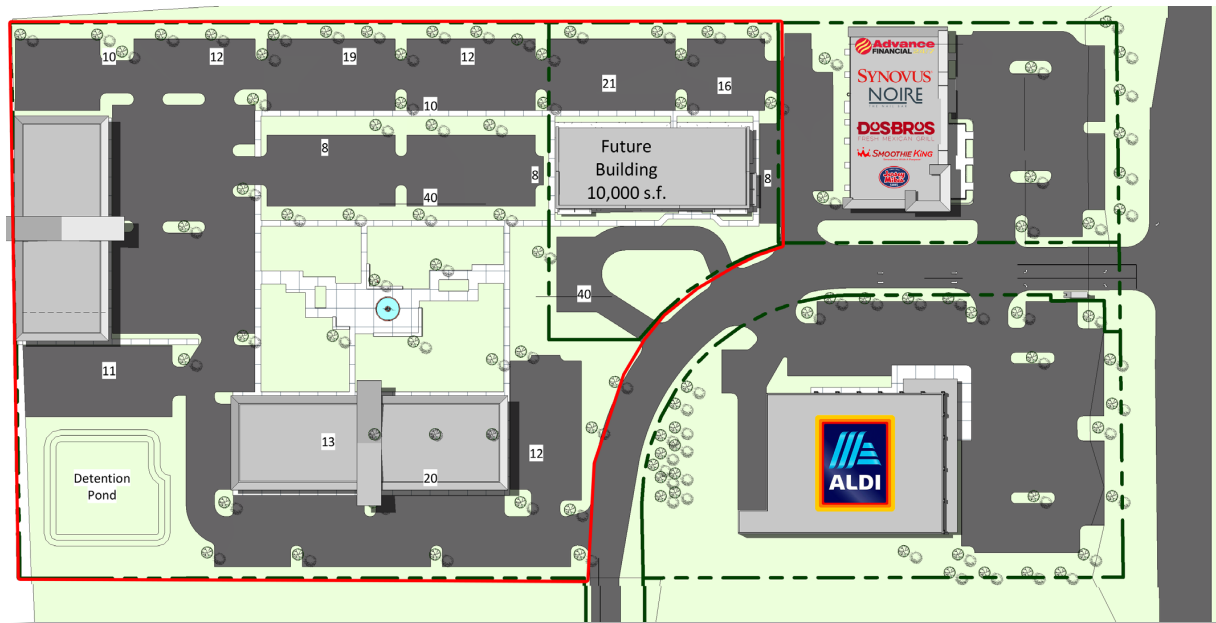


Avison Young | Knoxville
630 South Concord Street, Knoxville, TN 37919
avisonyoung.com

Brande Benson
865.450.8883
brande.benson@avisonyoung.com



The information contained herein was obtained from sources believed reliable; however, Avison Young makes no guarantees, warranties, or representations as to the completeness or accuracy thereof. The presentation of this property is submitted subject to errors, omissions, changes of price or conditions prior to sale or lease, or withdrawal without notice. © Avison Young



9232 LEE HIGHWAY, OOLTEWAH, TN



Avison Young | Knoxville
630 South Concord Street, Knoxville, TN 37919
avisonyoung.com

Brande Benson
865.450.8883
brande.benson@avisonyoung.com



WHITE OAK
CROSSING

The information contained herein was obtained from sources believed reliable; however, Avison Young makes no guarantees, warranties, or representations as to the completeness or accuracy thereof. The presentation of this property is submitted subject to errors, omissions, changes of price or conditions prior to sale or lease, or withdrawal without notice. © Avison Young



9232 LEE HIGHWAY, OOLTEWAH, TN



Avison Young | Knoxville
630 South Concord Street, Knoxville, TN 37919
avisonyoung.com

Brande Benson
865.450.8883
brande.benson@avisonyoung.com



WHITE OAK
CROSSING

The information contained herein was obtained from sources believed reliable; however, Avison Young makes no guarantees, warranties, or representations as to the completeness or accuracy thereof. The presentation of this property is submitted subject to errors, omissions, changes of price or conditions prior to sale or lease, or withdrawal without notice. © Avison Young

SUMMARY PROFILE

2000-2010 Census, 2017 Estimates with 2022 Projections

Calculated using Weighted Block Centroid from Block Groups

Lat/Lon: 35.0818/-85.0606

RS1

9232 Lee Hwy		1 mi radius	3 mi radius	5 mi radius
Ooltewah, TN 37363				
POPULATION	2017 Estimated Population	1,725	19,652	55,784
	2022 Projected Population	1,823	20,600	58,417
	2010 Census Population	884	14,566	44,547
	2000 Census Population	675	12,111	35,950
	Projected Annual Growth 2017 to 2022	1.1%	1.0%	0.9%
	Historical Annual Growth 2000 to 2017	9.1%	3.7%	3.2%
	2017 Median Age	40.7	38.2	38.4
HOUSEHOLDS	2017 Estimated Households	709	7,390	20,508
	2022 Projected Households	743	7,737	21,512
	2010 Census Households	355	5,146	15,620
	2000 Census Households	275	4,210	12,537
	Projected Annual Growth 2017 to 2022	1.0%	0.9%	1.0%
	Historical Annual Growth 2000 to 2017	9.3%	4.4%	3.7%
RACE AND ETHNICITY	2017 Estimated White	86.7%	85.8%	84.4%
	2017 Estimated Black or African American	4.6%	6.3%	8.6%
	2017 Estimated Asian or Pacific Islander	2.6%	2.6%	2.6%
	2017 Estimated American Indian or Native Alaskan	0.3%	0.4%	0.3%
	2017 Estimated Other Races	5.8%	4.9%	4.0%
	2017 Estimated Hispanic	9.7%	7.9%	6.4%
INCOME	2017 Estimated Average Household Income	\$58,641	\$73,715	\$82,988
	2017 Estimated Median Household Income	\$67,510	\$70,806	\$76,409
	2017 Estimated Per Capita Income	\$24,101	\$28,115	\$31,004
EDUCATION (AGE 25+)	2017 Estimated Elementary (Grade Level 0 to 8)	3.9%	3.4%	2.8%
	2017 Estimated Some High School (Grade Level 9 to 11)	4.0%	3.9%	5.7%
	2017 Estimated High School Graduate	18.0%	20.6%	22.9%
	2017 Estimated Some College	21.8%	26.9%	25.3%
	2017 Estimated Associates Degree Only	13.0%	10.6%	8.9%
	2017 Estimated Bachelors Degree Only	22.6%	22.2%	21.6%
	2017 Estimated Graduate Degree	16.7%	12.5%	12.8%
BUSINESS	2017 Estimated Total Businesses	273	715	1,264
	2017 Estimated Total Employees	3,288	15,601	25,175
	2017 Estimated Employee Population per Business	12.1	21.8	19.9
	2017 Estimated Residential Population per Business	6.3	27.5	44.1

This report was produced using data from private and government sources deemed to be reliable. The information herein is provided without representation or warranty.