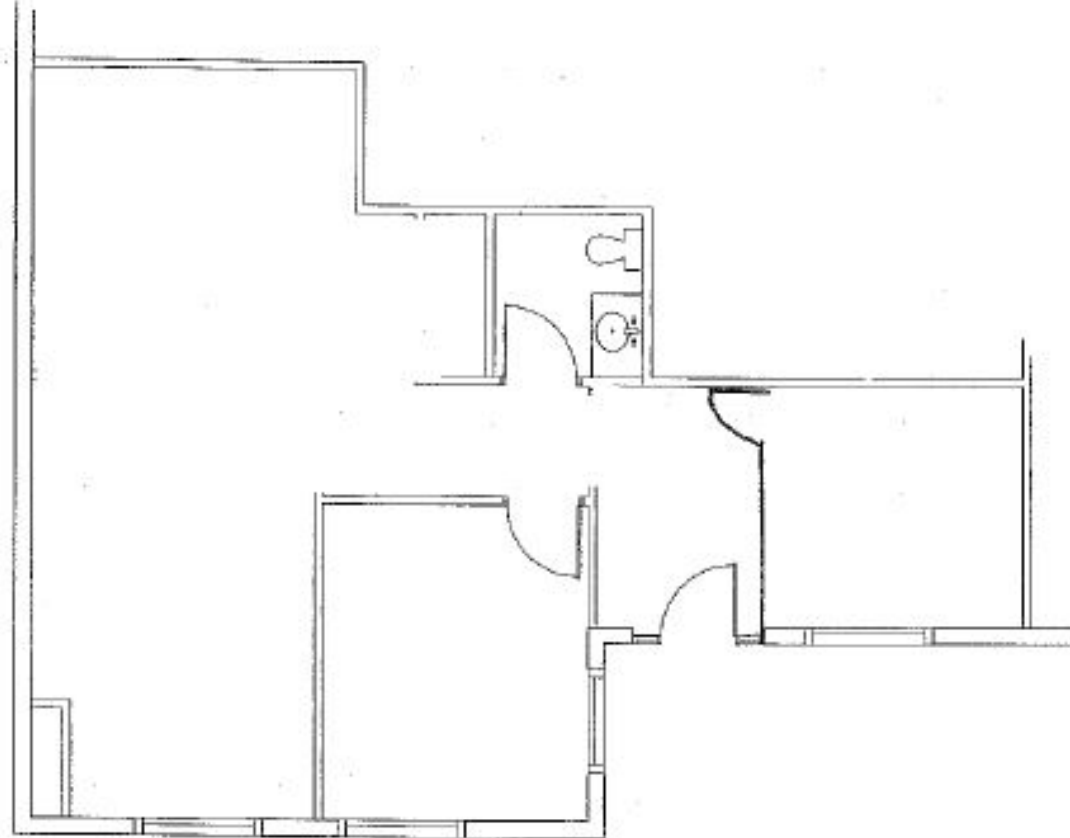


4300 N MILLER ROAD

AVAILABLE FOR LEASE

480.294.6572



SUITE 218

±1,351 SF

FOR MORE INFORMATION
CONTACT:

KERI DAVIES
480.294.6572
kdavies@levrose.com

JASON REDDINGTON
480.289.4504
jreddington@levrose.com

LEVROSE
COMMERCIAL REAL ESTATE



4300 N MILLER ROAD • SCOTTSDALE • AZ

This information has been secured from sources believed to be reliable, but no representations or warranties are made, expressed or implied, as to the accuracy of the information. References to square footage are approximate. Buyer and tenant must verify the information and bears all risk for any inaccuracies. All quoted prices are subject to change without notice.