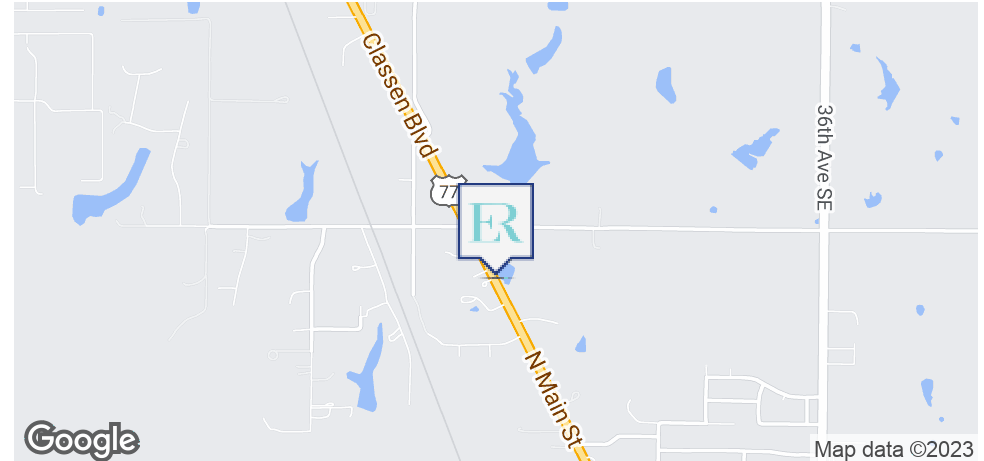


# IRONWOLF - 1600 N MAIN, NOBLE

1600 N MAIN STREET, NOBLE, OK 73068



## OFFERING SUMMARY

Available SF:	
Lease Rate:	Negotiable
Lot Size:	17.62 Acres
Building Size:	154,798
Market:	Noble
Submarket:	Norman

## PROPERTY OVERVIEW

Available warehouse space in the IronWolf Building. Landlord is motivated to work on a negotiable rate to get you into this large space located south of Norman.

## LOCATION OVERVIEW

West of North Main St (HWY 77) just 3 miles from Hwy 9 East.

## PROPERTY HIGHLIGHTS

- Warehouse has 5 dock doors
- 2, 10x12
- 3, 10x10
- 1 grade 10x10
- Clear Height 18'

## AVAILABLE SPACES

SPACE	LEASE RATE	SIZE (SF)
-------	------------	-----------

### PAUL SWALES

Equity Commercial Realty Advisors, LLC  
paul@fleskeholding.com

(405) 420- 6244 cell  
(405) 701- 3505 x218 office

### JOSH WHITE, CCIM

Equity Commercial Realty Advisors, LLC  
josh@fleskeholding.com

(405) 417- 6761 cell  
(405) 701- 3505 x221 office

# IRONWOLF - 1600 N MAIN, NOBLE

1600 N MAIN STREET, NOBLE, OK 73068



**PAUL SWALES**

Equity Commercial Realty Advisors, LLC  
paul@fleskeholding.com

(405) 420- 6244 cell  
(405) 701- 3505 x218 office

**JOSH WHITE, CCIM**

Equity Commercial Realty Advisors, LLC  
josh@fleskeholding.com

(405) 417- 6761 cell  
(405) 701- 3505 x221 office



# IRONWOLF - 1600 N MAIN, NOBLE

1600 N MAIN STREET, NOBLE, OK 73068



**PAUL SWALES**

Equity Commercial Realty Advisors, LLC  
paul@fleskeholding.com

(405) 420- 6244 cell  
(405) 701- 3505 x218 office

**JOSH WHITE, CCIM**

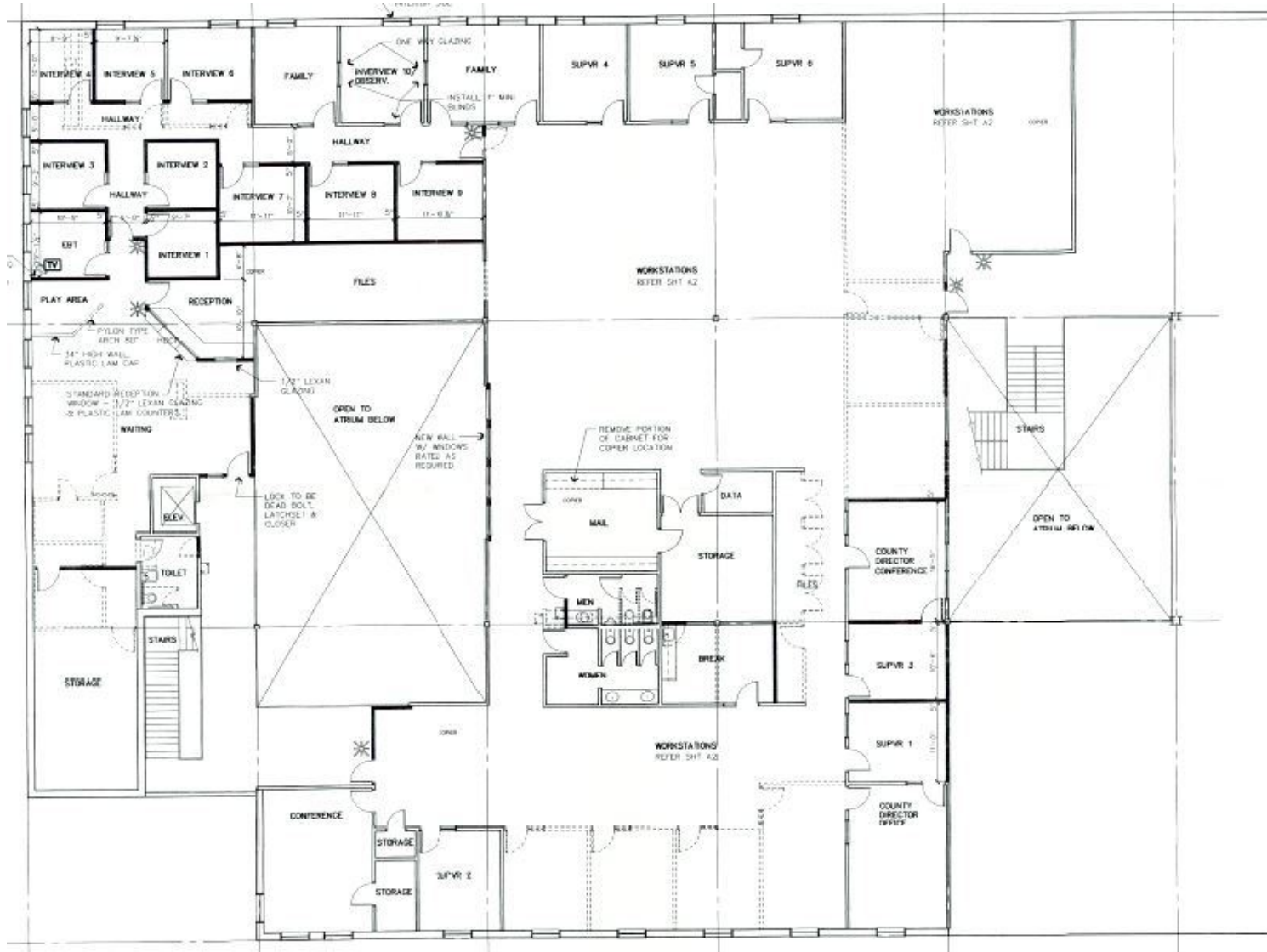
Equity Commercial Realty Advisors, LLC  
josh@fleskeholding.com

(405) 417- 6761 cell  
(405) 701- 3505 x221 office

# AN INDUSTRIAL LEASE OPPORTUNITY

## IRONWOLF - 1600 N MAIN, NOBLE

7,747SF OFFICE, NOBLE, OK 73068



### PAUL SWALES

Equity Commercial Realty Advisors, LLC  
paul@fleskeholding.com

(405) 420- 6244 cell  
(405) 701- 3505 x218 office

### JOSH WHITE, CCIM

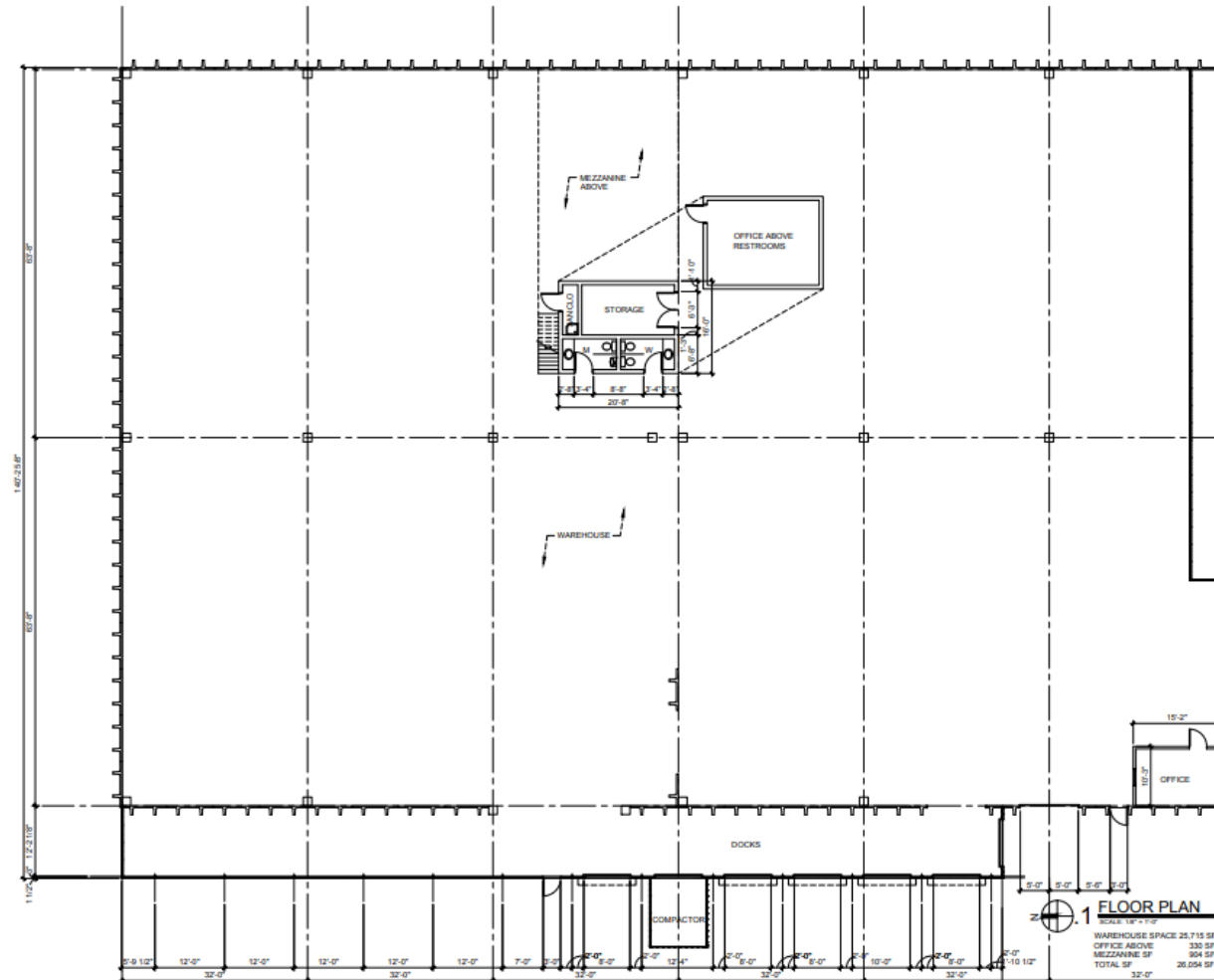
Equity Commercial Realty Advisors, LLC  
josh@fleskeholding.com

(405) 417- 6761 cell  
(405) 701- 3505 x221 office



# IRONWOLF - 1600 N MAIN, NOBLE

26,000SF WAREHOUSE, NOBLE, OK 73068



2019-0034
© Copyright 2019 Phase One
Phase One, All Rights Reserved

WAREHOUSE  
601 HAMILTON DRIVE  
NOBLE, OKLAHOMA

EXISTING  
FLOOR PLAN

A010

## PAUL SWALES

Equity Commercial Realty Advisors, LLC  
paul@fleskeholding.com

(405) 420- 6244 cell  
(405) 701- 3505 x218 office

## JOSH WHITE, CCIM

Equity Commercial Realty Advisors, LLC  
josh@fleskeholding.com

(405) 417- 6761 cell  
(405) 701- 3505 x221 office