

FOR LEASE

Turn Key Medical/Dental Suite  
Class A Medical Building

**NEWPORT AVE. MEDICAL PLAZA**

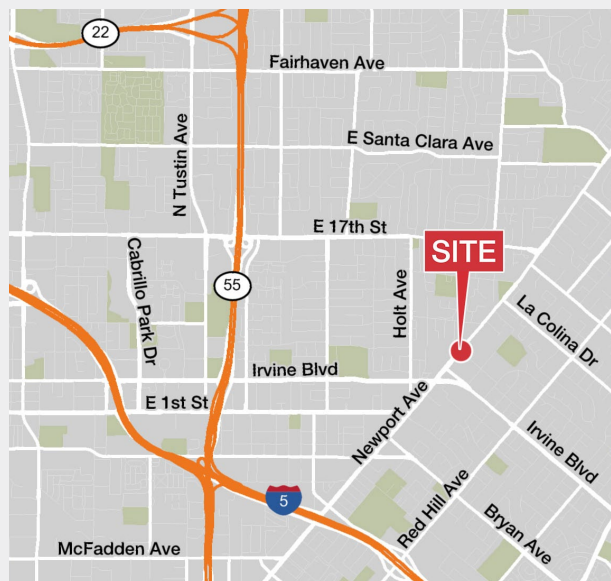


**Newport Ave. Medical Plaza**

12791 Newport Avenue  
Tustin, CA 92780

**Property Features**

- Suite 208 available for lease
- Size: 1,248 RSF
- Rate: \$3.10 PSF/NNN
- Available April 1, 2019
- 20,000 SF Class A medical building
- Monument signage available on Newport Ave
- Easy 5 and 55 freeway access
- Near Hoag Irvine and Saddleback Memorial



Developed and Managed by:



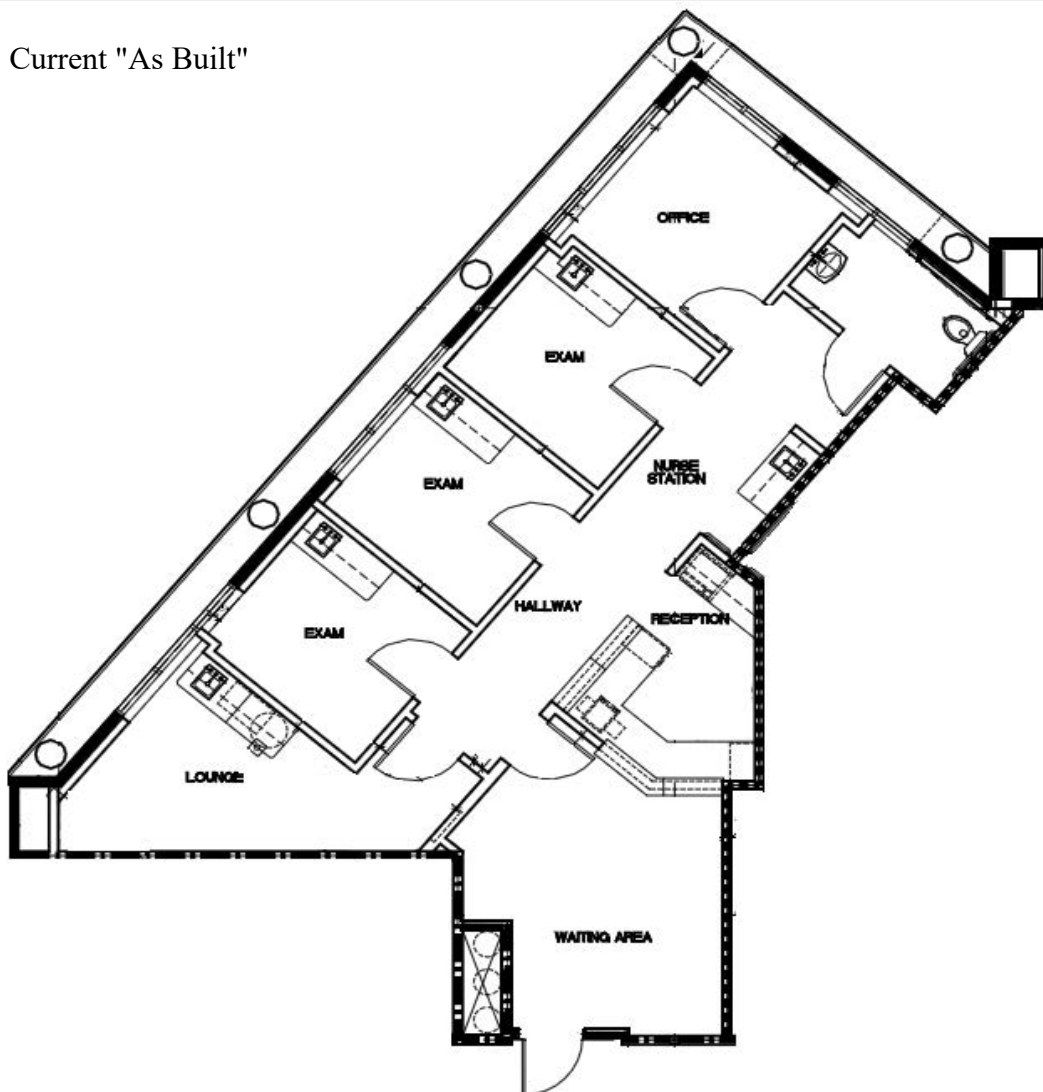
For more information:

**Mariko Beaver**  
Senior Vice President  
949 468 2321  
mbeaver@naicapital.com  
CA BRE Lic. #01226745

Orange County Office  
1920 Main Street, Suite 100  
Irvine, CA 92614  
949 854 6600  
[naicapital.com](http://naicapital.com)



Current "As Built"



No warranty, express or implied, is made as to the accuracy of the information contained herein. This information is submitted subject to errors, omissions, change of price, rental or other conditions, withdrawal without notice, and is subject to any special listing conditions imposed by our principals. Cooperating brokers, buyers, tenants and other parties who receive this document should not rely on it, but should use it as a starting point of analysis, and should independently confirm the accuracy of the information contained herein through a due diligence review of the books, records, files and documents that constitute reliable sources of the information described herein. NAI Capital CA BRE #01990696.

Developed and Managed by:



**Mariko Beaver**  
Senior Vice President  
949 468 2321  
mbeaver@naicapital.com  
CA BRE Lic. #01226745

Orange County Office  
1920 Main Street, Suite 100  
Irvine, CA 92614  
949 854 6600  
[naicapital.com](http://naicapital.com)