

PARK MEDICAL PLAZA

4915-4949 SOUTH CONGRESS AVENUE, LAKE WORTH, FL 33461

Professional/Medical Office Building For Lease



PROPERTY DESCRIPTION

Park Medical Plaza consists of two, 8,500 SF single-story, medical office buildings totaling 17,000 SF. Each suite has direct entry from the street and are separately metered for electric.

Suites immediately available from 1,587 SF to 3,775 SF.

4915 S. Congress Avenue

Suite A: 3,775 SF

Suite C: 1,587 SF

4949 S. Congress Avenue

Suite E: 1,638 SF

LOCATION DESCRIPTION

Park Medical Plaza is located approximately 1/2 mile north of JFK Medical Center in Lake Worth, FL with numerous nearby amenities including restaurants and shops.

OFFERING SUMMARY

Lease Rate:	\$17.00 SF/YR (NNN)
Operating Expenses (2020 Projected):	\$5.00/SF
Available SF:	
Lot Size:	1.79 Acres
Building Size:	17,000 SF



KD COMMERCIAL
REAL ESTATE

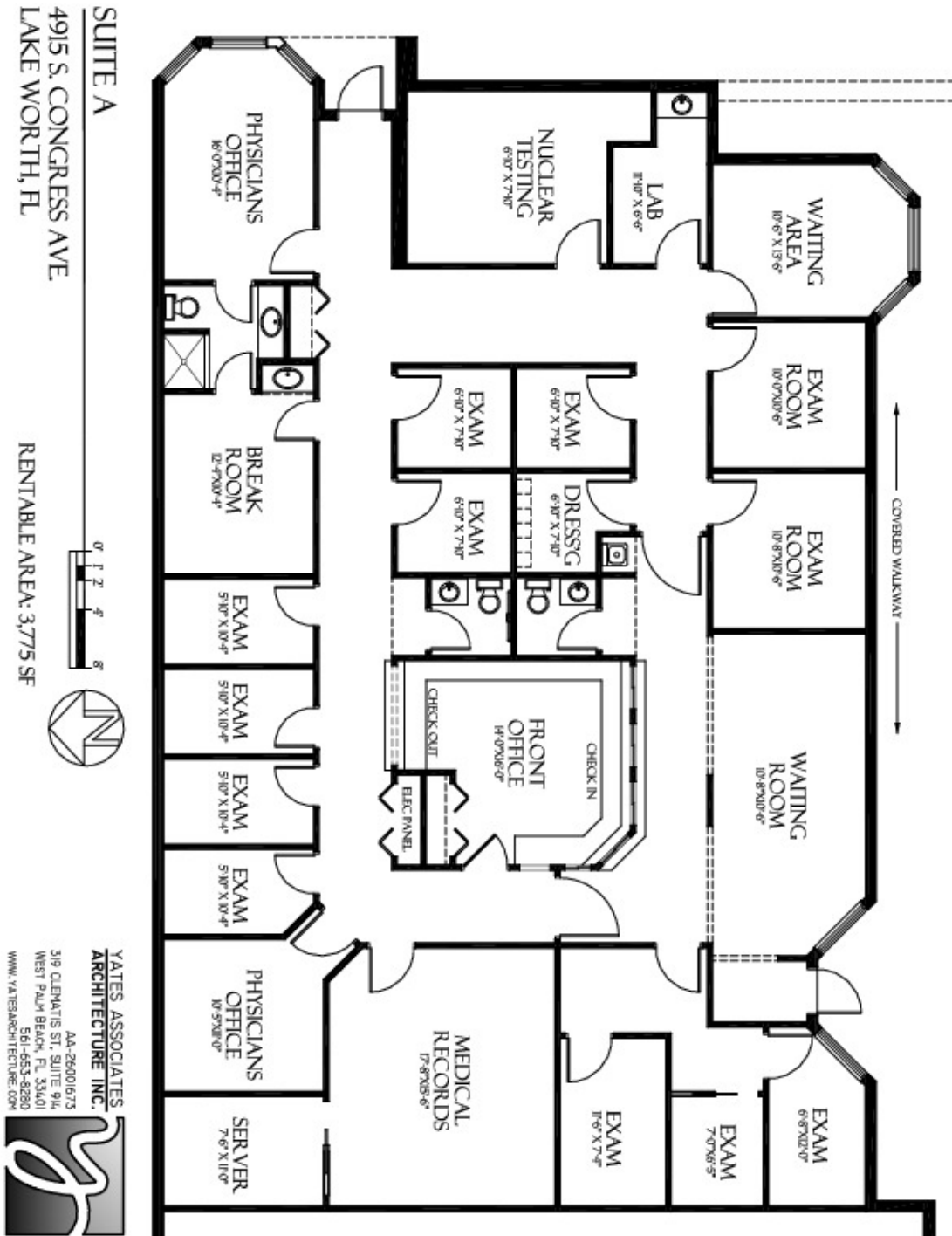
David W. Knott
561.662.5758
dknott@kdcre.com

Ryan R. Dinsdale, CCIM
561.504.6169
rdinsdale@kdcre.com

PARK MEDICAL PLAZA

4915-4949 SOUTH CONGRESS AVENUE, LAKE WORTH, FL 33461

Floor Plan - Suite A @ 4915 S. Congress Ave



KD COMMERCIAL
REAL ESTATE

David W. Knott Ryan R. Dinsdale, CCIM
561.662.5758 561.504.6169
dknott@kdcre.com rdinsdale@kdcre.com

PARK MEDICAL PLAZA

4915-4949 SOUTH CONGRESS AVENUE, LAKE WORTH, FL 33461

Photos - Suite A



KD COMMERCIAL
REAL ESTATE

David W. Knott
561.662.5758
dknott@kdcre.com

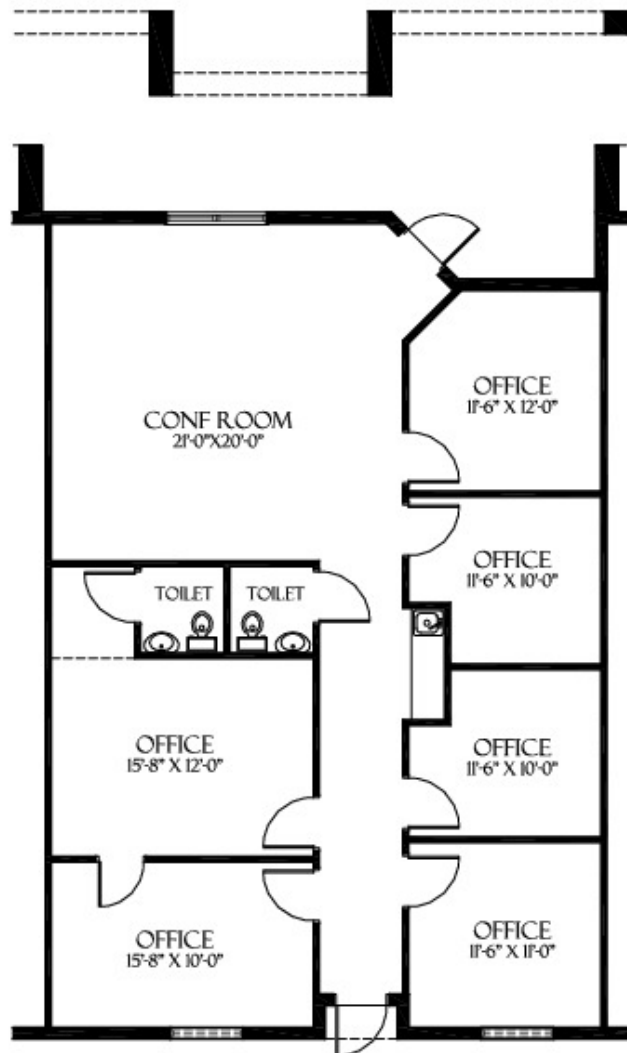
Ryan R. Dinsdale, CCIM
561.504.6169
rdinsdale@kdcre.com

PARK MEDICAL PLAZA

4915-4949 SOUTH CONGRESS AVENUE, LAKE WORTH, FL 33461



Floor Plan - Suite C @ 4915 S. Congress Ave



SUITE C

4915 S. CONGRESS AVE.
LAKE WORTH, FL



RENTABLE AREA: 1,587 SF

YATES ASSOCIATES
ARCHITECTURE INC.

AA-26001673
319 CLEMATIS ST., SUITE 914
WEST PALM BEACH, FL 33401
561-653-8280
WWW.YATESARCHITECTURE.COM



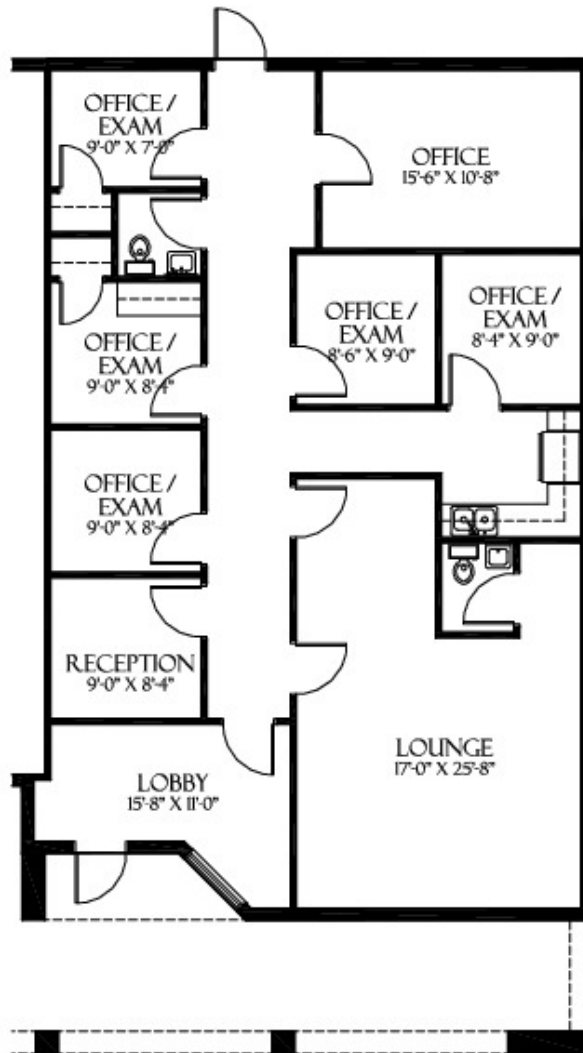
KD COMMERCIAL
REAL ESTATE

David W. Knott Ryan R. Dinsdale, CCIM
561.662.5758 561.504.6169
dknott@kdcre.com rdinsdale@kdcre.com

PARK MEDICAL PLAZA

4915-4949 SOUTH CONGRESS AVENUE, LAKE WORTH, FL 33461

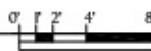
Floor Plan - Suite E @ 4949 S. Congress Ave



SUITE E

4949 S. CONGRESS AVE.
LAKE WORTH, FL

RENTABLE AREA: 1,638 SF



YATES ASSOCIATES
ARCHITECTURE INC.

AA-26001673
319 CLEMATIS ST, SUITE 914
WEST PALM BEACH, FL 33401
561-653-8280
WWW.YATESARCHITECTURE.COM



KD COMMERCIAL
REAL ESTATE

David W. Knott Ryan R. Dinsdale, CCIM
561.662.5758 561.504.6169
dknott@kdcre.com rdinsdale@kdcre.com

PARK MEDICAL PLAZA

4915-4949 SOUTH CONGRESS AVENUE, LAKE WORTH, FL 33461

Photos - Suite E



KD COMMERCIAL
REAL ESTATE

David W. Knott
561.662.5758
dknott@kdcre.com

Ryan R. Dinsdale, CCIM
561.504.6169
rdinsdale@kdcre.com

PARK MEDICAL PLAZA

4915-4949 SOUTH CONGRESS AVENUE, LAKE WORTH, FL 33461

Professional/Medical Office Building For Lease



KD COMMERCIAL
REAL ESTATE

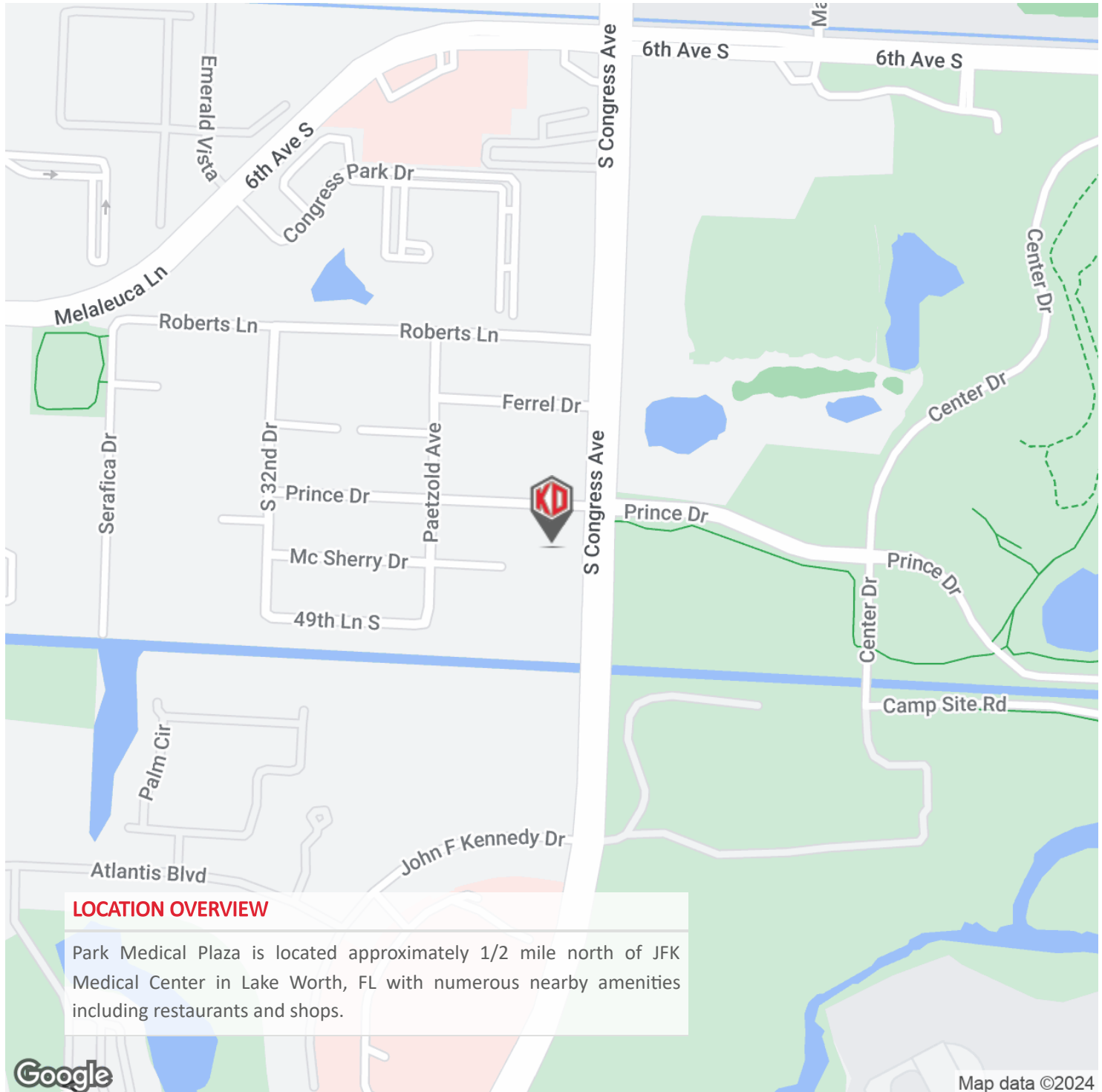
David W. Knott
561.662.5758
dknott@kdcre.com

Ryan R. Dinsdale, CCIM
561.504.6169
rdinsdale@kdcre.com

PARK MEDICAL PLAZA

4915-4949 SOUTH CONGRESS AVENUE, LAKE WORTH, FL 33461

Professional/Medical Office Building For Lease



KD COMMERCIAL
REAL ESTATE

David W. Knott
561.662.5758
dknott@kdcre.com

Ryan R. Dinsdale, CCIM
561.504.6169
rdinsdale@kdcre.com

No warranty or representation, express or implied, is made as to the accuracy or completeness of the information contained herein, and is submitted subject to errors, omissions, change of terms or conditions, withdrawal without notice, and to any special listing conditions imposed by the property owner(s). Additionally, no representation is made as to the condition of the property in question.