

# OUTLOTS FOR SALE

US 35 & US 62 Washington Court House, OH 43160

**NAI**Bergman



## Retail/Office Lots | 1.05 - 11.654 Acres

- 7 parcels available For Sale or Build to Suit
- 1-11 Acres
- Regional shopping destination
- Ohio's largest outlet center within 10 miles
- Great access to US 35
- US 35 @ Highland Avenue - 18,379 CPD
- Leesburg Avenue @ Dice Drive - 8,607 CPD
- Retailers on site include: Holiday Inn Express, Aldi's, Roosters, LCNB, Home Depot, Aaron Rents, and Dollar Tree
- Neighbors include: Southern State Community College, Fairgrounds, Yusa Manufacturing Plant, Four Seasons of Washington



**Cindy Metz**

+1 513 322 6303

cmetz@bergman-group.com

No Warranty Or Representation, Express Or Implied, Is Made As To The Accuracy Of The Information Contained Herein, And The Same Is Submitted Subject To Errors, Omissions, Change Of Price, Rental Or Other Conditions, Prior Sale, Lease Or Financing, Or Withdrawal Without Notice, And Of Any Special Listing Conditions Imposed By Our Principals. No Warranties Or Representations Are Made As To The Condition Of The Property Or Any Hazards Contained Therein Are Any To Be Implied.



**4695 Lake Forest Drive**

Cincinnati, OH 45242

bergmancommercial.com

Map data ©2024 Google

# OUTLOTS FOR SALE

US 35 & US 62 Washington Court House, OH 43160



## 7 PARCELS AVAILABLE / ACREAGE:

* Lot 11	11.65 acres - \$100,000 / acre
* Lot 12	8.66 acres - \$150,000 / acre
* Lot 14	1.51 acres - \$250,000 / acre
* Lot 15	1.47 acres - \$250,000 / acre
Lot 16	1.90 acres - \$450,000 / acre
Lot 17	1.40 acres - \$300,000 / acre
Lot 18	2.14 acres - \$400,000 / acre

## NEIGHBORS INCLUDE:

Southern State Community College  
Fairgrounds  
Yusa Manufacturing Plant  
Four Seasons of Washington

- UTILITIES AT SITE

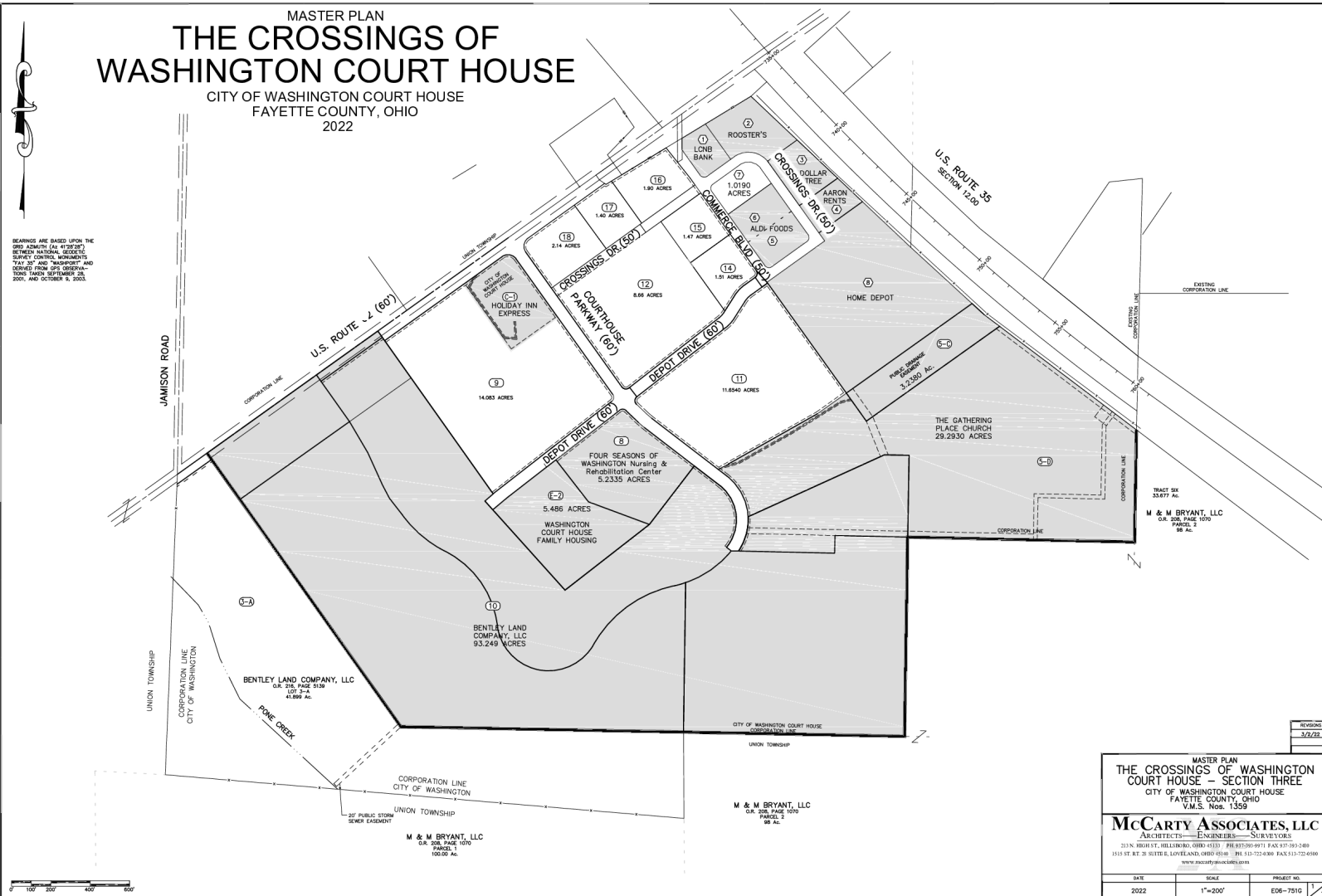
\* LOT SIZE IS FLEXIBLE

# OUTLOTS FOR SALE

US 35 & US 62 Washington Court House, OH 43160

## MASTER PLAN THE CROSSINGS OF WASHINGTON COURT HOUSE CITY OF WASHINGTON COURT HOUSE FAYETTE COUNTY, OHIO 2022

BEARINGS ARE BASED UPON THE  
1910 ADJUSTED (S&W 1910)  
BETWEEN NATIONAL GEODESIC  
SURVEY CONTROL ADJUSTMENTS  
747 20' AND 748000' AND  
748000' FROM 1910 ADJUSTED  
TO 1910 ADJUSTED (S&W 1910)  
2001, AND OCTOBER 8, 2003.



MASTER PLAN		
THE CROSSINGS OF WASHINGTON COURT HOUSE - SECTION THREE		
CITY OF WASHINGTON COURT HOUSE		
FAYETTE COUNTY, OHIO		
V.M.S. Nos. 1359		
McCARTY ASSOCIATES, LLC		
ARCHITECTS—ENGINEERS—SURVEYORS		
2114 N. HIGH ST., HILLMAN, OHIO 43121 PH 615-586-9911 FAX 615-586-1889		
1515 RT. 28 SUTHERLAND, OHIO 43084 PH 615-522-6886 FAX 615-522-6100		
www.mccartyassociates.com		
DATE	SCALE	PROJECT NO.
2022	1"=200'	ED6-751G

# OUTLOTS FOR SALE

US 35 & US 62 Washington Court House, OH 43160



✉ **Cindy Metz**  
+1 513 322 6303  
cmetz@bergman-group.com

No Warranty Or Representation, Express Or Implied, Is Made As To The Accuracy Of The Information Contained Herein, And The Same Is Submitted Subject To Errors, Omissions, Change Of Price, Rental Or Other Conditions, Prior Sale, Lease Or Financing, Or Withdrawal Without Notice, And Of Any Special Listing Conditions Imposed By Our Principals. No Warranties Or Representations Are Made As To The Condition Of The Property Or Any Hazards Contained Therein Are Any To Be Implied.

**NABergman**

# FOR SALE

US 35 & US 62 Washington Court House, OH 43160

## Summary Profile

2010-2020 Census, 2022 Estimates with 2027 Projections  
Calculated using Weighted Block Centroid from Block Groups



Lat/Lon: 39.5275/-83.4656

Washington Court House, OH 43160	1 mi radius	3 mi radius	5 mi radius
<b>Population</b>			
2022 Estimated Population	1,572	15,836	18,605
2027 Projected Population	1,545	15,609	18,339
2020 Census Population	1,565	15,808	18,655
2010 Census Population	1,565	15,744	18,590
Projected Annual Growth 2022 to 2027	-0.3%	-0.3%	-0.3%
Historical Annual Growth 2010 to 2022	-	-	-
2022 Median Age	42.5	40.1	40.5
<b>Households</b>			
2022 Estimated Households	682	6,634	7,762
2027 Projected Households	662	6,458	7,559
2020 Census Households	678	6,617	7,778
2010 Census Households	659	6,329	7,462
Projected Annual Growth 2022 to 2027	-0.6%	-0.5%	-0.5%
Historical Annual Growth 2010 to 2022	0.3%	0.4%	0.3%
<b>Income</b>			
2022 Estimated Average Household Income	\$66,438	\$60,491	\$63,248
2022 Estimated Median Household Income	\$56,548	\$49,438	\$50,309
2022 Estimated Per Capita Income	\$29,461	\$25,561	\$26,588
<b>Education (Age 25+)</b>			
2022 Estimated Elementary (Grade Level 0 to 8)	1.4%	3.7%	3.9%
2022 Estimated Some High School (Grade Level 9 to 11)	19.8%	14.7%	14.1%
2022 Estimated High School Graduate	34.6%	43.1%	43.1%
2022 Estimated Some College	16.5%	16.4%	16.5%
2022 Estimated Associates Degree Only	2.2%	6.5%	6.6%
2022 Estimated Bachelors Degree Only	14.2%	10.4%	10.6%
2022 Estimated Graduate Degree	11.4%	5.2%	5.3%
<b>Business</b>			
2022 Estimated Total Businesses	76	501	578
2022 Estimated Total Employees	2,495	6,669	8,039
2022 Estimated Employee Population per Business	32.6	13.3	13.9
2022 Estimated Residential Population per Business	20.6	31.6	32.2

©2022, Sites USA, Chandler, Arizona, 480-491-1112 Demographic Source: Applied Geographic Solutions 6/2022, TIGER Geography - RS1

This report was produced using data from private and government sources deemed to be reliable. The information herein is provided without representation or warranty.

page 1 of 1