

FOR LEASE

Oasis Plaza
Eugene, Oregon

**Evans
Elder
Brown &
Seubert**

COMMERCIAL REAL ESTATE

101 E. Broadway
Suite 101
Eugene, OR 97401
(541) 345-4860

eebcre.com



16365 Boones Ferry
Lake Oswego, OR 97035
(503) 597-2444

www.kwcommercial.com

kw PORTLAND
PREMIERE
KELLERWILLIAMS. REALTY

CONTACT

Stephanie Seubert

Evans, Elder, Brown & Seubert, Inc.
stephanie@eebcre.com
(541) 345-4860

Maria Duncan

KW Commercial
MDuncan@KWCommercial
(503) 869-5150



High Traffic North Eugene Retail Center

Anchored by Market of Choice and Bi-Mart

- Rare vacancies in Oasis Plaza
 - 1,957 sf of in-line retail space
 - 2,530 sf of prime end-cap restaurant space (includes a full hood system & walk-in cooler)
- Busy pedestrian and traffic center with strong demographics
- Accessible close-in location with excellent on-site parking
- \$21.00-24.00 per square foot, triple net (NNN's range from 34¢ - 42¢ per sf, per month)

Licensed in the State of Oregon

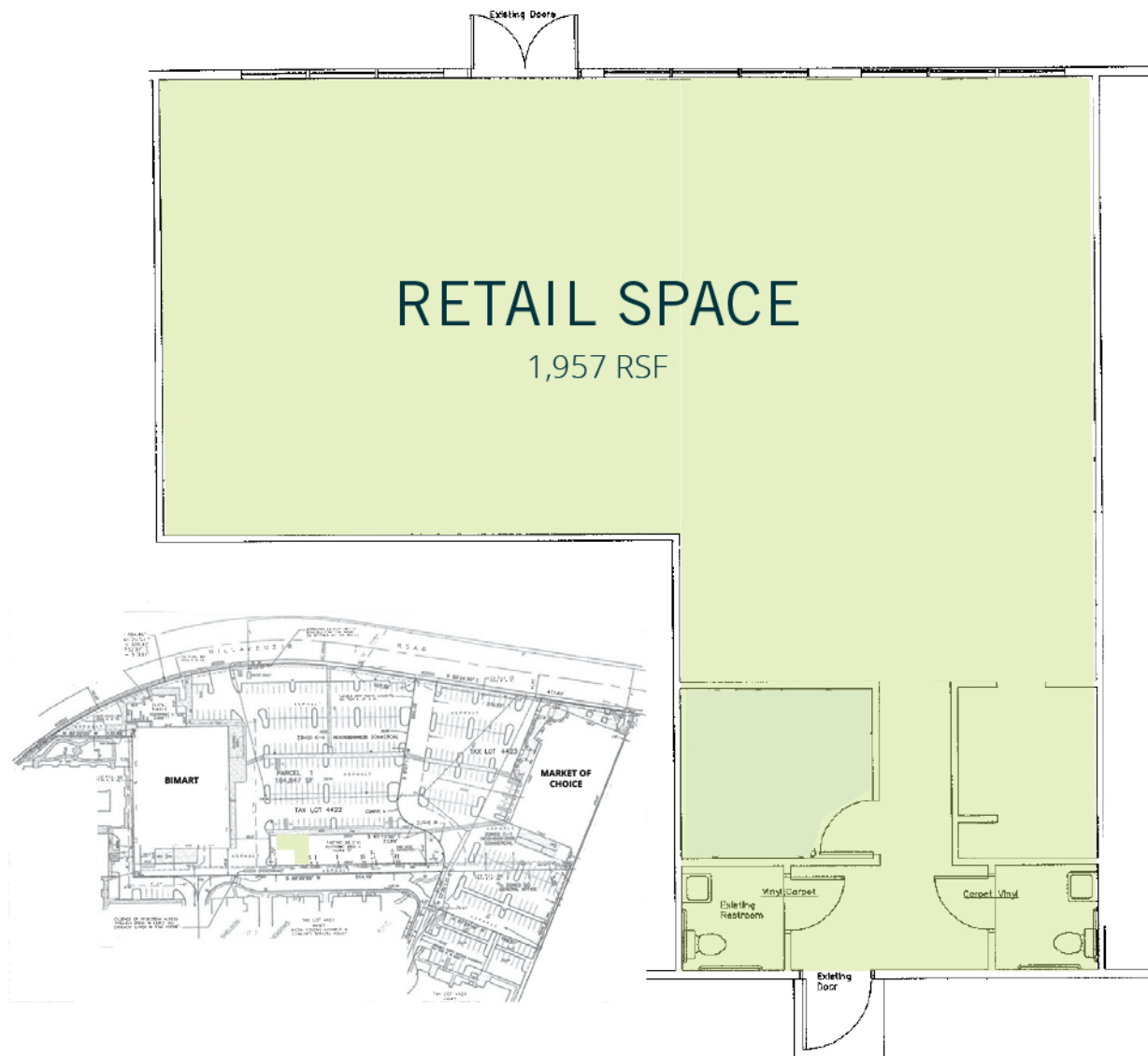
The information in this package was gathered from sources deemed reliable, however Evans Elder Brown & Seubert makes no representation or warranty of the accuracy of the information. Any buyer or tenant considering a purchase or lease of this property should confirm any and all information relied upon in making the decision to purchase or lease prior to finalizing the transaction and bears the risk of all inaccuracies.

Retail Space



2532 Willakenzie Road

- Approximately 1,957 sf
- Large open retail area with small office and two ADA restrooms
- Busy pedestrian and traffic center with strong demographics
- **\$1.75 per sf, per month, triple net**
(NNN's = approximately 34-42¢ per sf, per month)

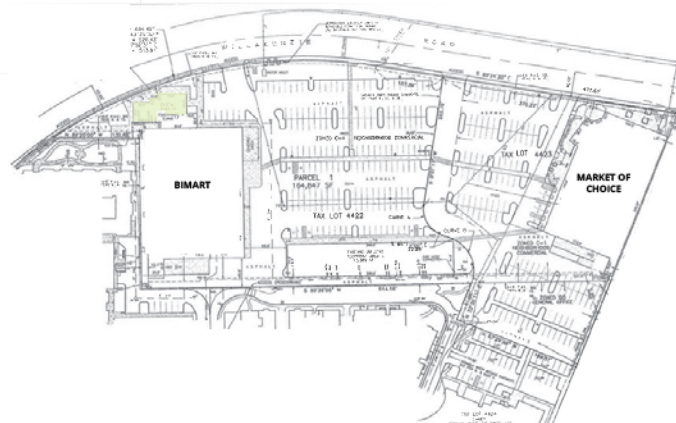


Restaurant Space



2506 Willakenzie Road

- Approximately 2,530 sf
- Full Service Restaurant, End-Cap with full hood system and walk-in cooler
- Outdoor seating, walk-up window
- Common area restrooms shared with Hard Core Yoga
- **\$2.00 per sf, per month, triple net**
(NNN's = approximately 34- 42¢ per sf, per month)



Location

