

OFFICE BUILDING FOR LEASE

1640 LELIA

1640 LELIA DR JACKSON, MS 39216



JEFF SPEED, CCIM
601.624.8380
jeff@speedcres.com

DAVID MOSAL, CCIM
601.941.0597
david@speedcres.com

SPEED COMMERCIAL REAL ESTATE

601.987.0202 | 805 South Wheatley | Ridgeland, MS 39157 | speedcres.com

This information has been obtained from sources believed reliable, but has not been verified for accuracy or completeness. You should conduct a careful, independent investigation of the property and verify all information. Any reliance on this information is solely at your own risk. All of other marks displayed on this document are the property of their respective

OFFICE BUILDING FOR LEASE



PROPERTY DESCRIPTION

Full Service lease with Janitorial Included

LOCATION DESCRIPTION

1640 Lelia is located behind the Canopy Childrens Solutionsl Office building located on Lakeland Drive. Lelia parallels Lakeland Drive and has numerous Medical and Professional office Buildings. Close to I-55 and Flowood this property boast the perfect location to have access to everything in Jackson and Flowood

SPACES	LEASE RATE	SPACE SIZE
Suite 205	\$17.00 SF/yr	2,382 SF

OFFERING SUMMARY

Lease Rate:	\$17.00 SF/yr (Full Service)
Number of Units:	2
Available SF:	2,382 SF
Lot Size:	0.92 Acres
Building Size:	17,249 SF

DEMOGRAPHICS	1 MILE	5 MILES	10 MILES
Total Households	816	45,636	118,592
Total Population	1,825	117,435	316,968
Average HH Income	\$165,346	\$58,346	\$61,129

JEFF SPEED, CCIM
601.624.8380
jeff@speedcres.com

DAVID MOSAL, CCIM
601.941.0597
david@speedcres.com

OFFICE BUILDING FOR LEASE



It turns out, you don't have any Plans Published!

(be sure to add floor plans in the [Property Edit Form](#))

JEFF SPEED, CCIM

601.624.8380

jeff@speedcres.com

DAVID MOSAL, CCIM

601.941.0597

david@speedcres.com

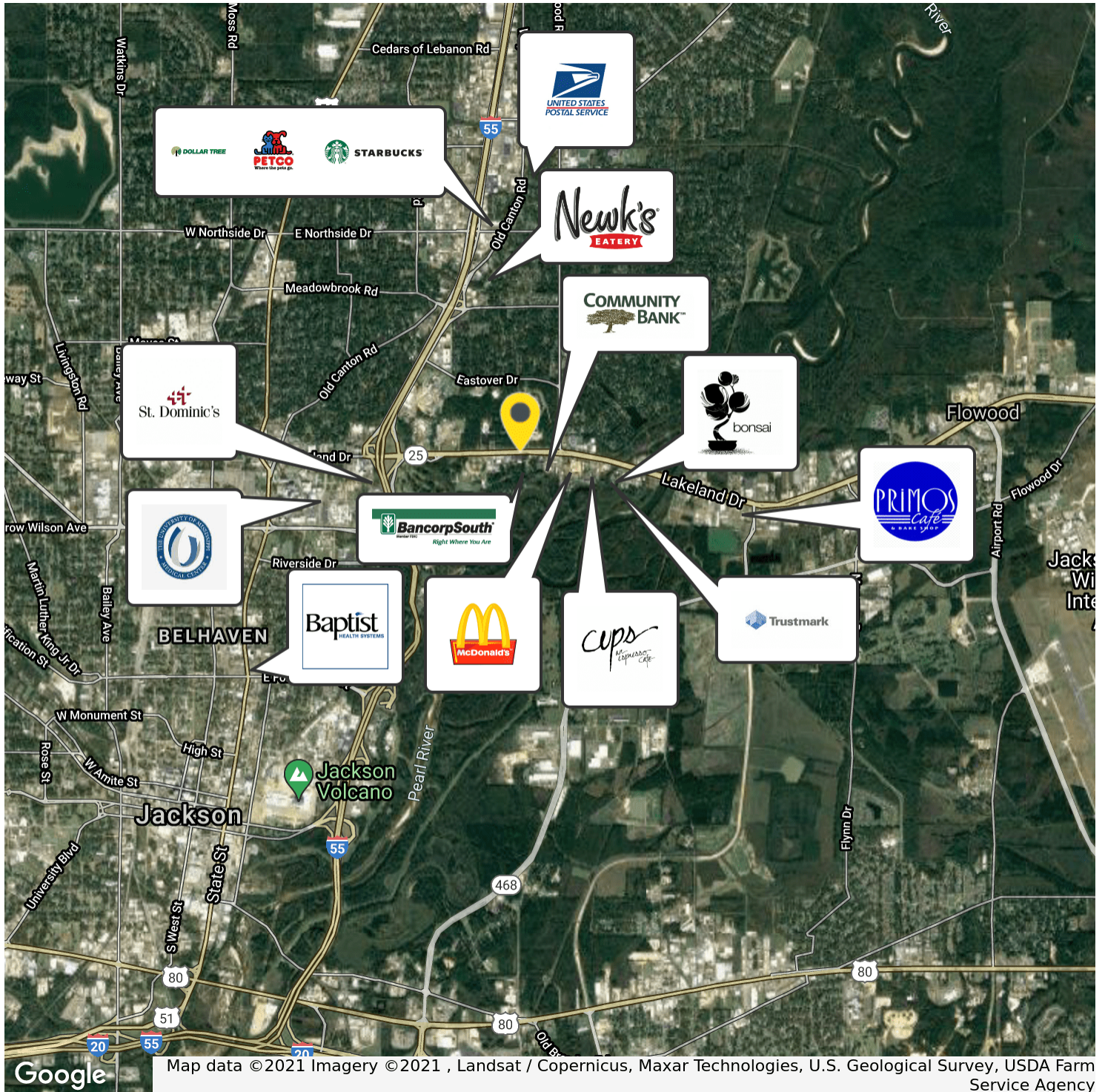
OFFICE BUILDING FOR LEASE



JEFF SPEED, CCIM
601.624.8380
jeff@speedcres.com

DAVID MOSAL, CCIM
601.941.0597
david@speedcres.com

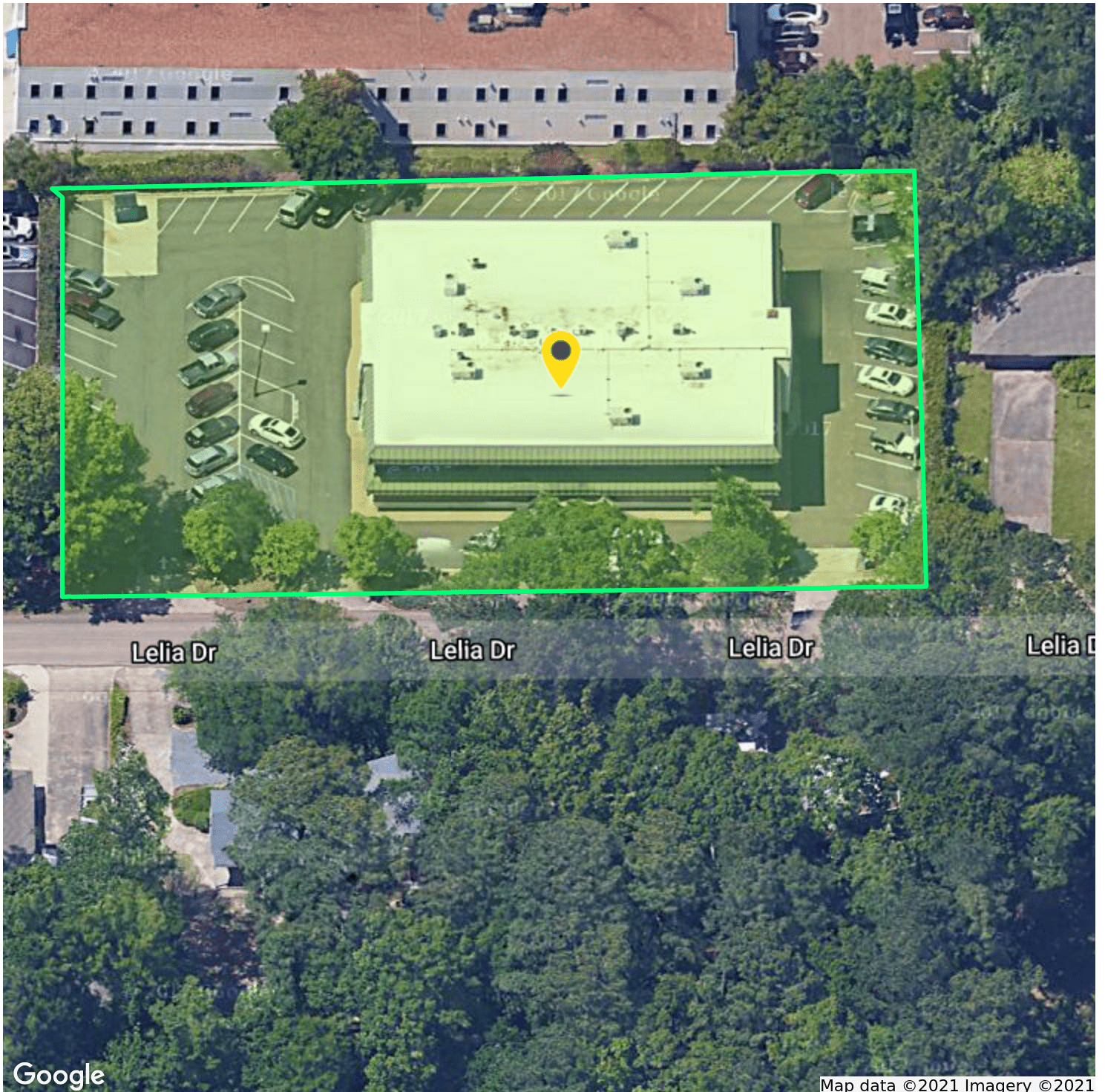
OFFICE BUILDING FOR LEASE



JEFF SPEED, CCIM
601.624.8380
jeff@speedcres.com

DAVID MOSAL, CCIM
601.941.0597
david@speedcres.com

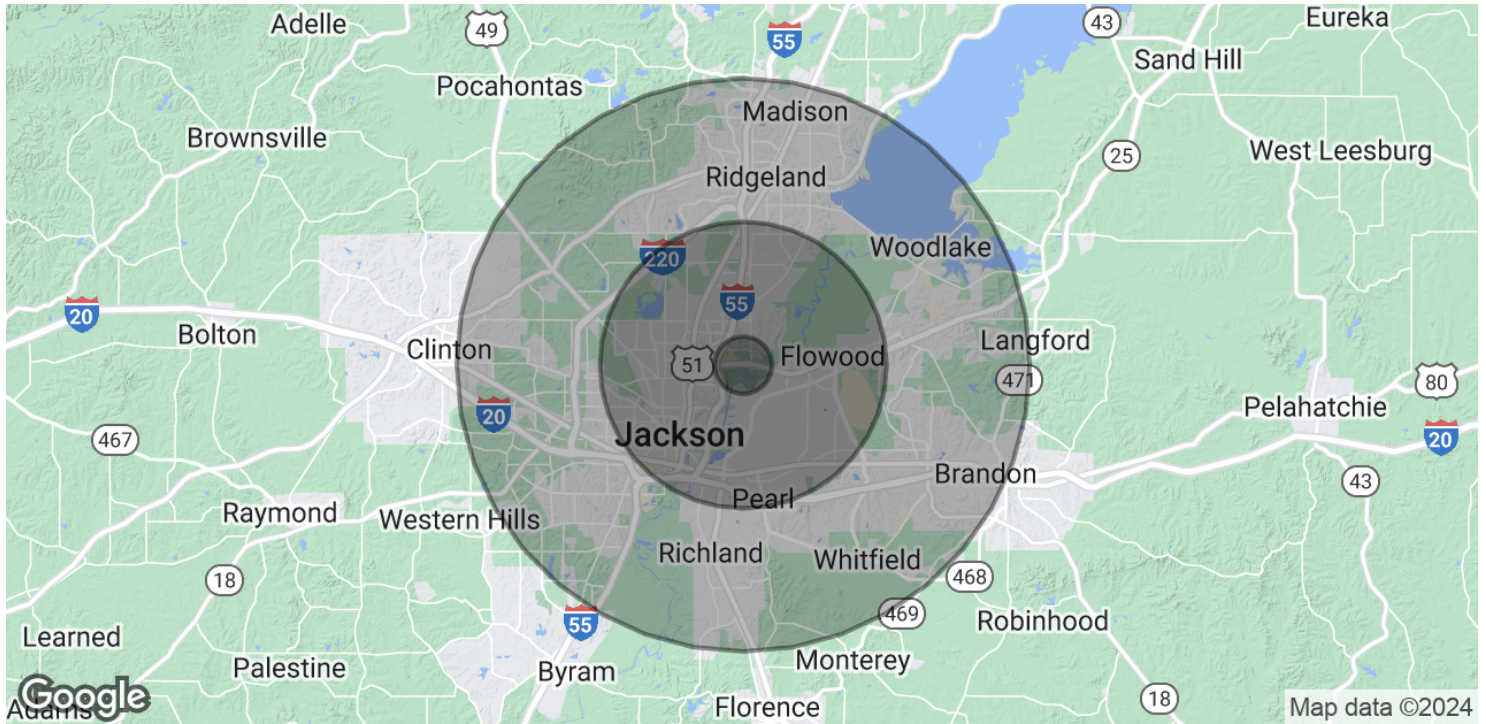
OFFICE BUILDING FOR LEASE



JEFF SPEED, CCIM
601.624.8380
jeff@speedcres.com

DAVID MOSAL, CCIM
601.941.0597
david@speedcres.com

OFFICE BUILDING FOR LEASE



POPULATION	1 MILE	5 MILES	10 MILES
Total Population	1,825	117,435	316,968
Average Age	46.8	34.2	33.8
Average Age (Male)	43.6	33.7	32.5
Average Age (Female)	49.4	34.8	35.0
HOUSEHOLDS & INCOME	1 MILE	5 MILES	10 MILES
Total Households	816	45,636	118,592
# of Persons per HH	2.2	2.6	2.7
Average HH Income	\$165,346	\$58,346	\$61,129
Average House Value	\$459,220	\$188,972	\$164,876

* Demographic data derived from 2020 ACS - US Census

JEFF SPEED, CCIM
601.624.8380
jeff@speedcres.com

DAVID MOSAL, CCIM
601.941.0597
david@speedcres.com

OFFICE BUILDING FOR LEASE



JEFF SPEED, CCIM

President | CCIM

D: 601.987.0202 | **C:** 601.624.8380

jeff@speedcres.com



MS #16810



DAVID MOSAL, CCIM

CCIM

D: 601.987.0202 x13 | **C:** 601.941.0597

david@speedcres.com



MS #S-40709

JEFF SPEED, CCIM

601.624.8380

jeff@speedcres.com

DAVID MOSAL, CCIM

601.941.0597

david@speedcres.com