

FOR LEASE - Design Your Custom Layout Or Move Right In

Holecek Community Services Center

4330 Tamiami Trail East, Naples, FL 34112



OFFERING SUMMARY

Available SF:

Lease Rate: N/A

CAM: \$5.00 PSF

Lot Size: 2.48 Acres

Year Built: 2000

Building Size: 21,616 SF

Zoning: C-3

PROPERTY OVERVIEW

Many sizes and floor plans to choose from. On the first floor join Millenium Physicians Group. 3600 sq ft of grey shell space with generous Tenant Improvement packages. Or, move right into 3500 sq feet of built out medical or office space.

On the second floor, there is 5059 sq feet of grey shell space and adjacent 2008 sq feet of built out medical space

PROPERTY HIGHLIGHTS

- Plenty of parking
- Medical and General Office units
- Built out or add your custom layout
- Tenant improvement packages available
- Huge growth part of town
- Located between NCH and Physicians Regional

Patty McClimans
Senior Advisor
239.963.4288
patty.mcclimans@svn.com



The information presented here is deemed to be accurate, but it has not been independently verified. We make no guarantee, warranty or representation. It is your responsibility to independently confirm accuracy and completeness. All SVN® offices are independently owned and operated.

FOR LEASE - Design Your Custom Layout Or Move Right In

Holecek Community Services Center

4330 Tamiami Trail East, Naples, FL 34112



Patty McClimans

Senior Advisor

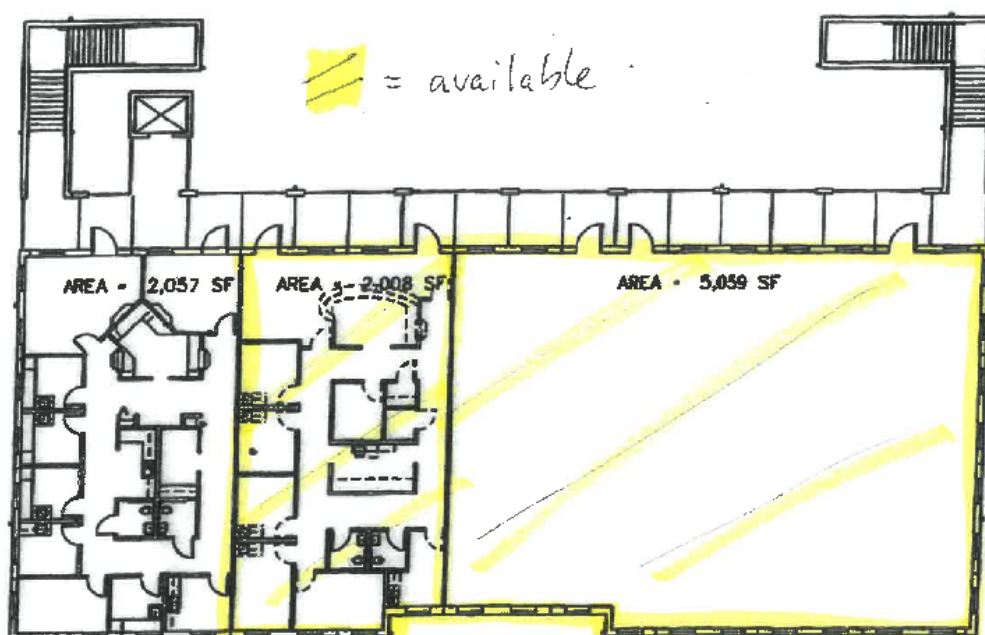
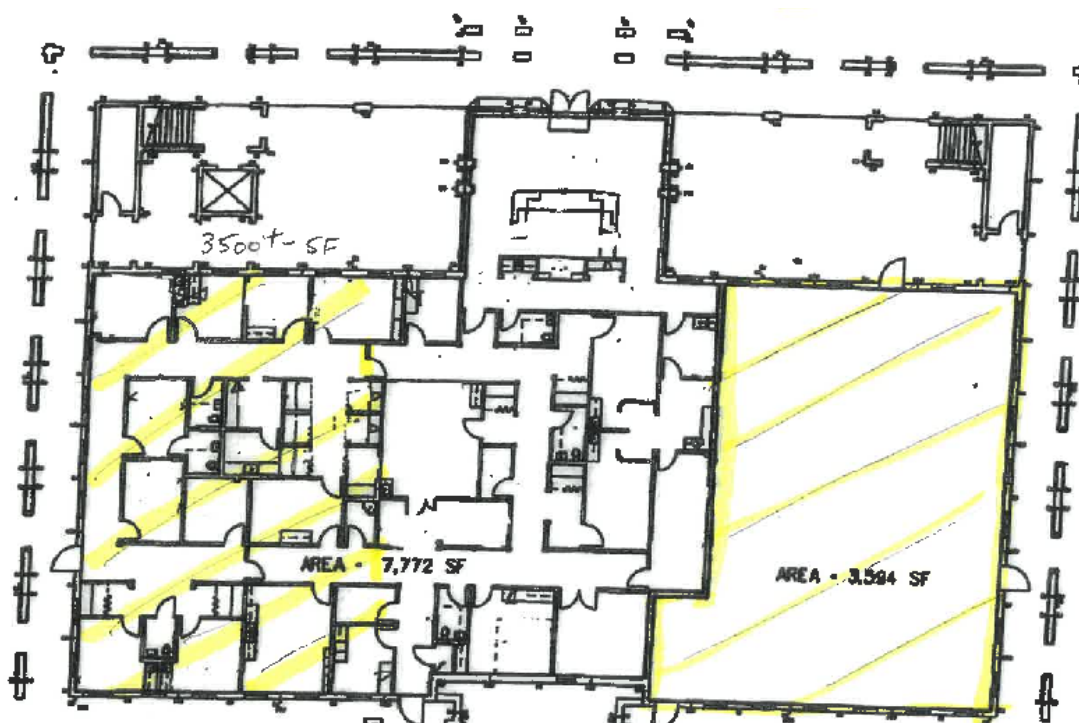
239.963.4288

patty.mcclimans@svn.com



The information presented here is deemed to be accurate, but it has not been independently verified. We make no guarantee, warranty or representation. It is your responsibility to independently confirm accuracy and completeness. All SVN® offices are independently owned and operated.

FOR LEASE - Design Your Custom Layout Or Move Right In



Patty McClimans
Senior Advisor
239.963.4288
patty.mcclimans@svn.com

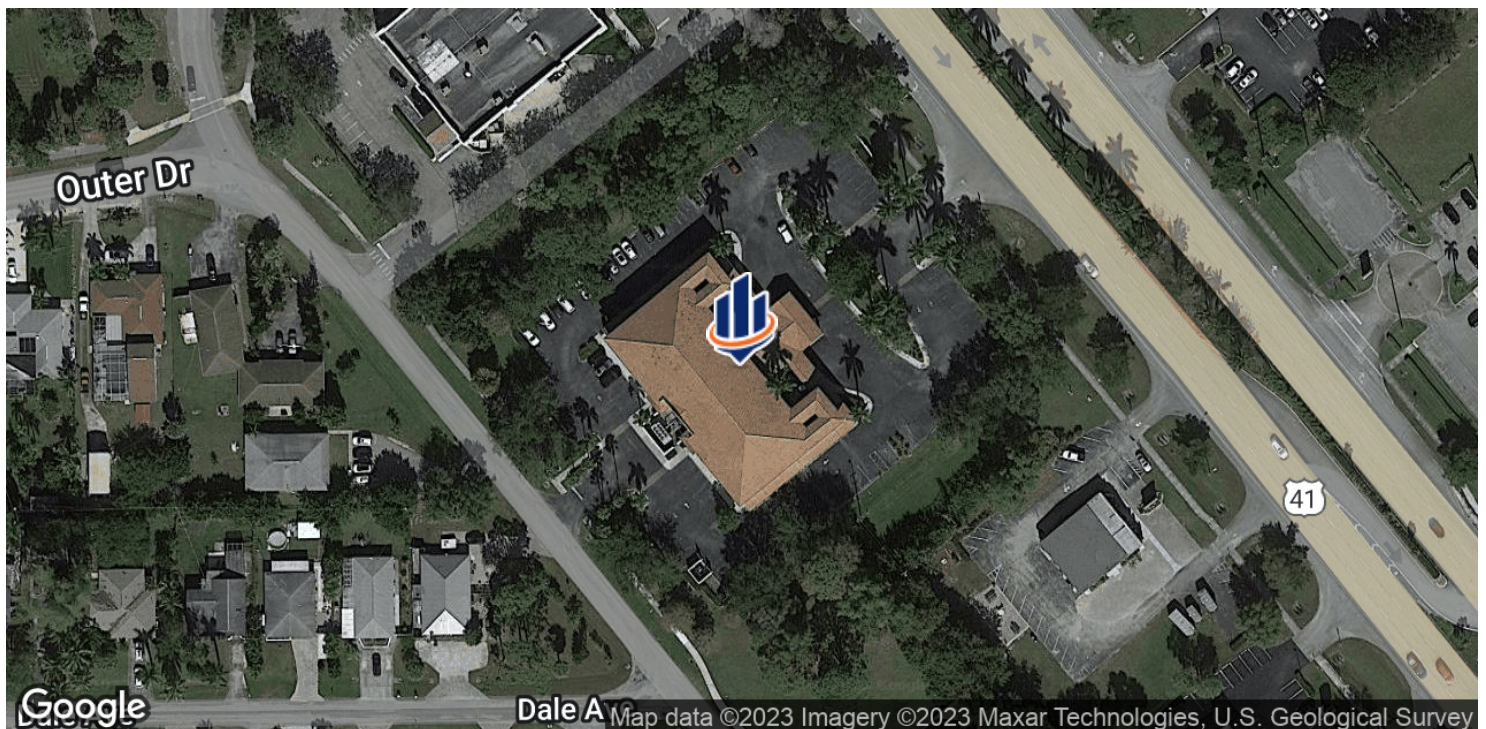
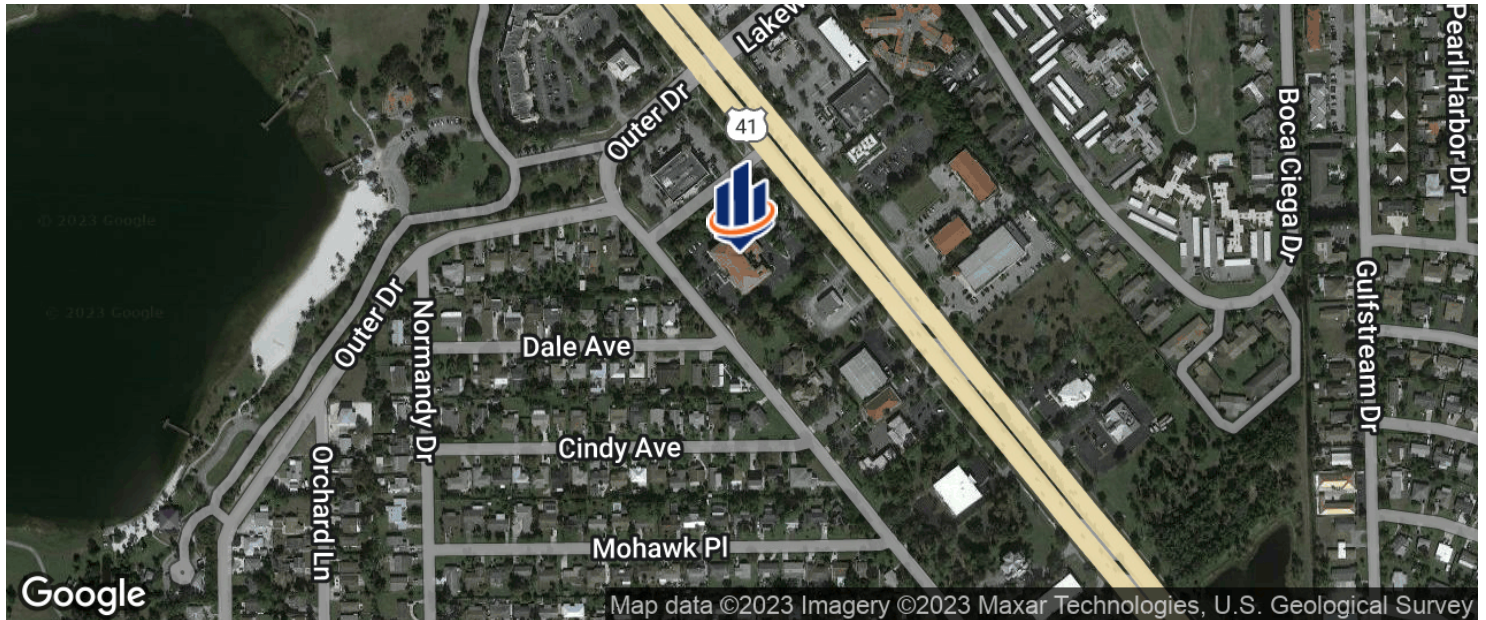


The information presented here is deemed to be accurate, but it has not been independently verified. We make no guarantee, warranty or representation. It is your responsibility to independently confirm accuracy and completeness. All SVN® offices are independently owned and operated.

FOR LEASE - Design Your Custom Layout Or Move Right

Holecek Community Services Center

4330 Tamiami Trail East, Naples, FL 34112



Patty McClimans

Senior Advisor

239.963.4288

patty.mcclimans@svn.com

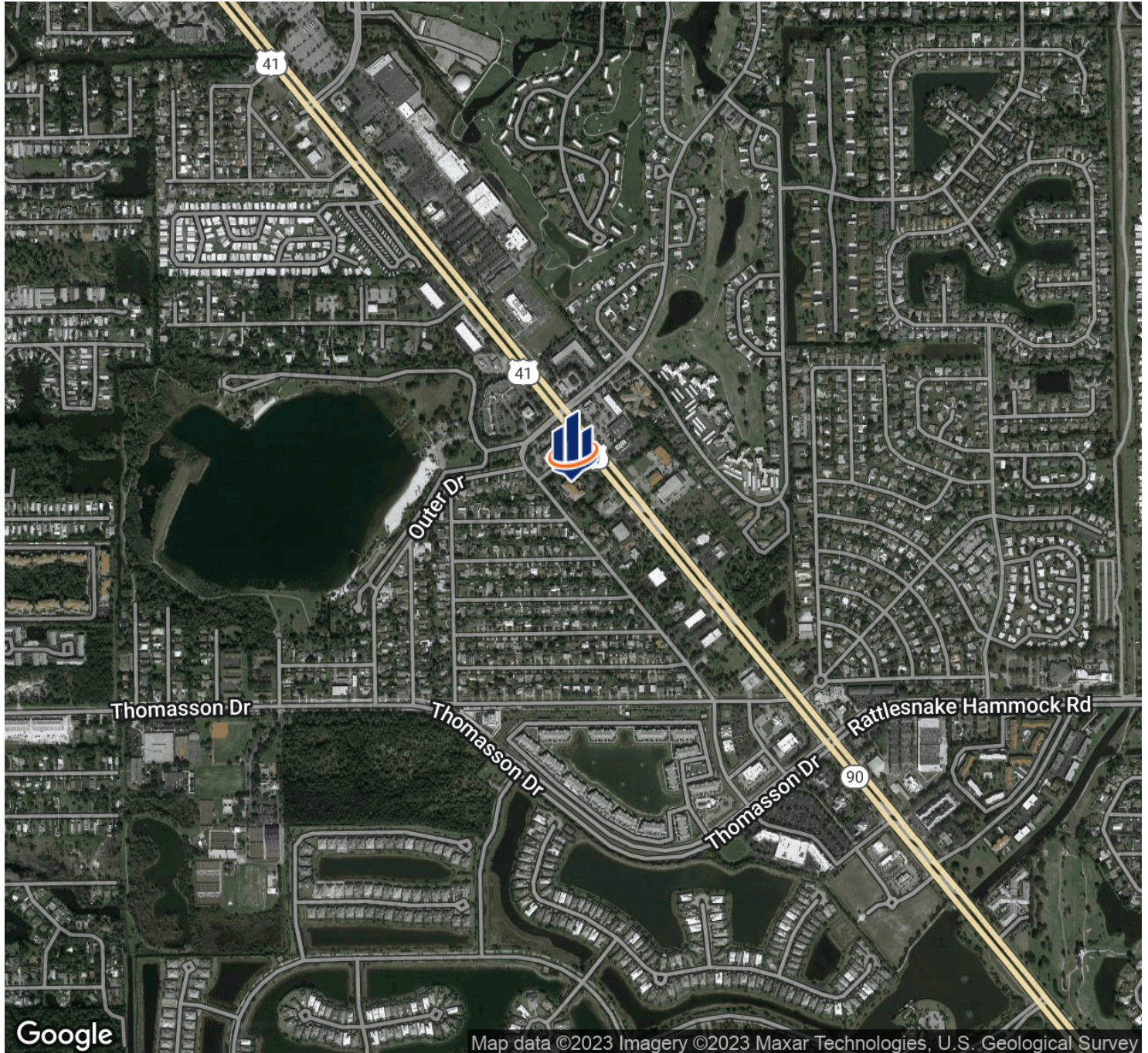


The information presented here is deemed to be accurate, but it has not been independently verified. We make no guarantee, warranty or representation. It is your responsibility to independently confirm accuracy and completeness. All SVN® offices are independently owned and operated.

FOR LEASE - Design Your Custom Layout Or Move Right

Holecek Community Services Center

4330 Tamiami Trail East, Naples, FL 34112



Patty McClimans

Senior Advisor

239.963.4288

patty.mcclimans@svn.com

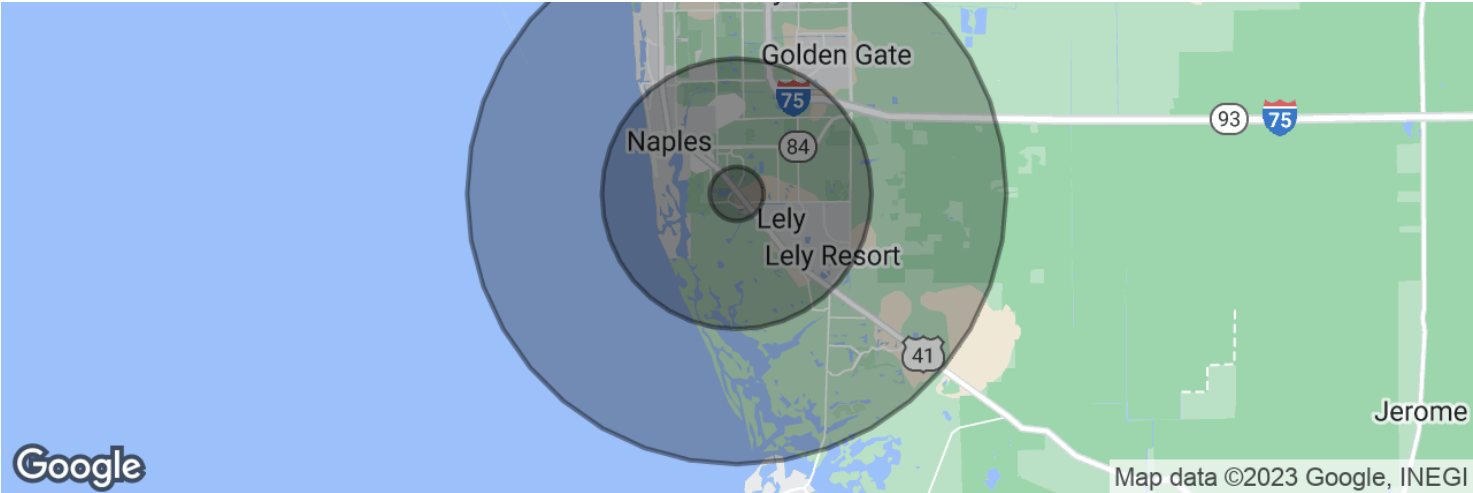


The information presented here is deemed to be accurate, but it has not been independently verified. We make no guarantee, warranty or representation. It is your responsibility to independently confirm accuracy and completeness. All SVN® offices are independently owned and operated.

FOR LEASE - Design Your Custom Layout Or Move Right

Holecek Community Services Center

4330 Tamiami Trail East, Naples, FL 34112



POPULATION	1 MILE	5 MILES	10 MILES
Total population	10,092	94,815	203,813
Median age	40.8	46.5	46.1
Median age (Male)	38.9	45.3	44.6
Median age (Female)	43.0	48.1	47.4
HOUSEHOLDS & INCOME	1 MILE	5 MILES	10 MILES
Total households	3,720	37,591	79,210
# of persons per HH	2.7	2.5	2.6
Average HH income	\$65,274	\$80,837	\$89,779
Average house value	\$263,226	\$358,786	\$427,082

* Demographic data derived from 2020 ACS - US Census

Patty McClimans
Senior Advisor
239.963.4288
patty.mcclimans@svn.com



The information presented here is deemed to be accurate, but it has not been independently verified. We make no guarantee, warranty or representation. It is your responsibility to independently confirm accuracy and completeness. All SVN® offices are independently owned and operated.