



## STORAGE SPACE - CLOSE IN PORTLAND

### OFFERING SUMMARY

<b>Available SF:</b>	Fully Leased
<b>Office SF:</b>	5,612 SF
<b>Lease Rate:</b>	negotiable
<b>Lot Size:</b>	2.91 Acres
<b>Building Size:</b>	16,500 SF
<b>Power:</b>	400 amp 240v 3 phase power
<b>Loading:</b>	2 dock high doors
<b>Renovated:</b>	2019
<b>Zoning:</b>	General Employment 2 (EG2)

### PROPERTY OVERVIEW

Approximately 16,500 SF of warehouse for short-term to annual storage or warehousing use only. Dock doors access for vans and box trucks under 24 feet in length. The space has multiple usable restroom and vacant unfinished office space. Space to be leased AS IS.

### LOCATION OVERVIEW

Located at NE 65th and NE Halsey street, the space offers high visibility and excellent signage along NE Halsey as well as I-84. Easy freeway access provides ideal commuting for employees and customers via car, Max, bike and bus.

### PROPERTY HIGHLIGHTS

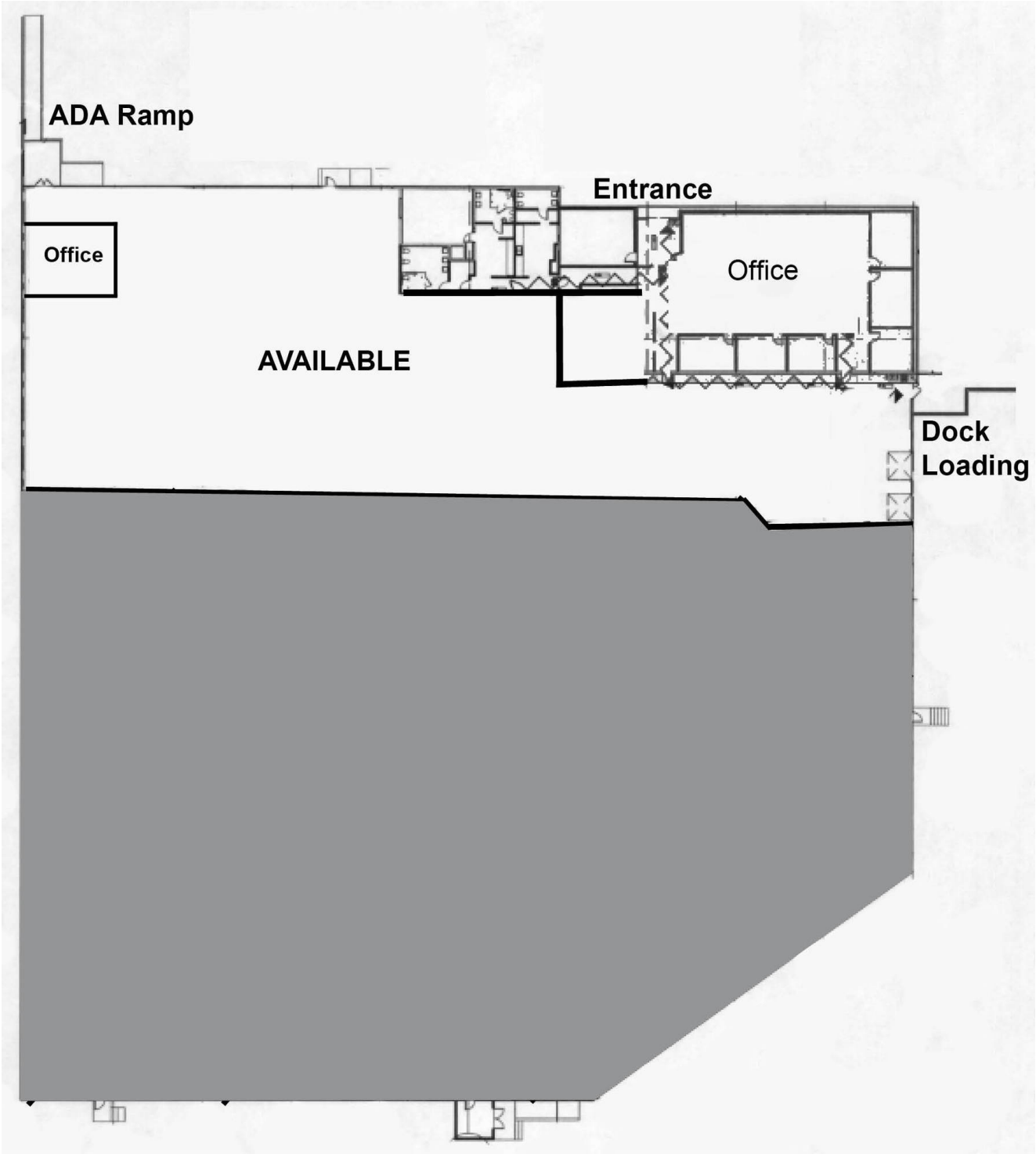
- 16,500 SF Warehouse storage -dock loading only
- Wet sprinkler system
- 400 amp, 240v 3 phase power
- Dedicated parking spaces
- Flexible lease term and rates
- Leased in AS IS condition



**Eleanor Aschoff**  
503.972.7296  
eleanor@macadamforbes.com  
Licensed in OR & WA

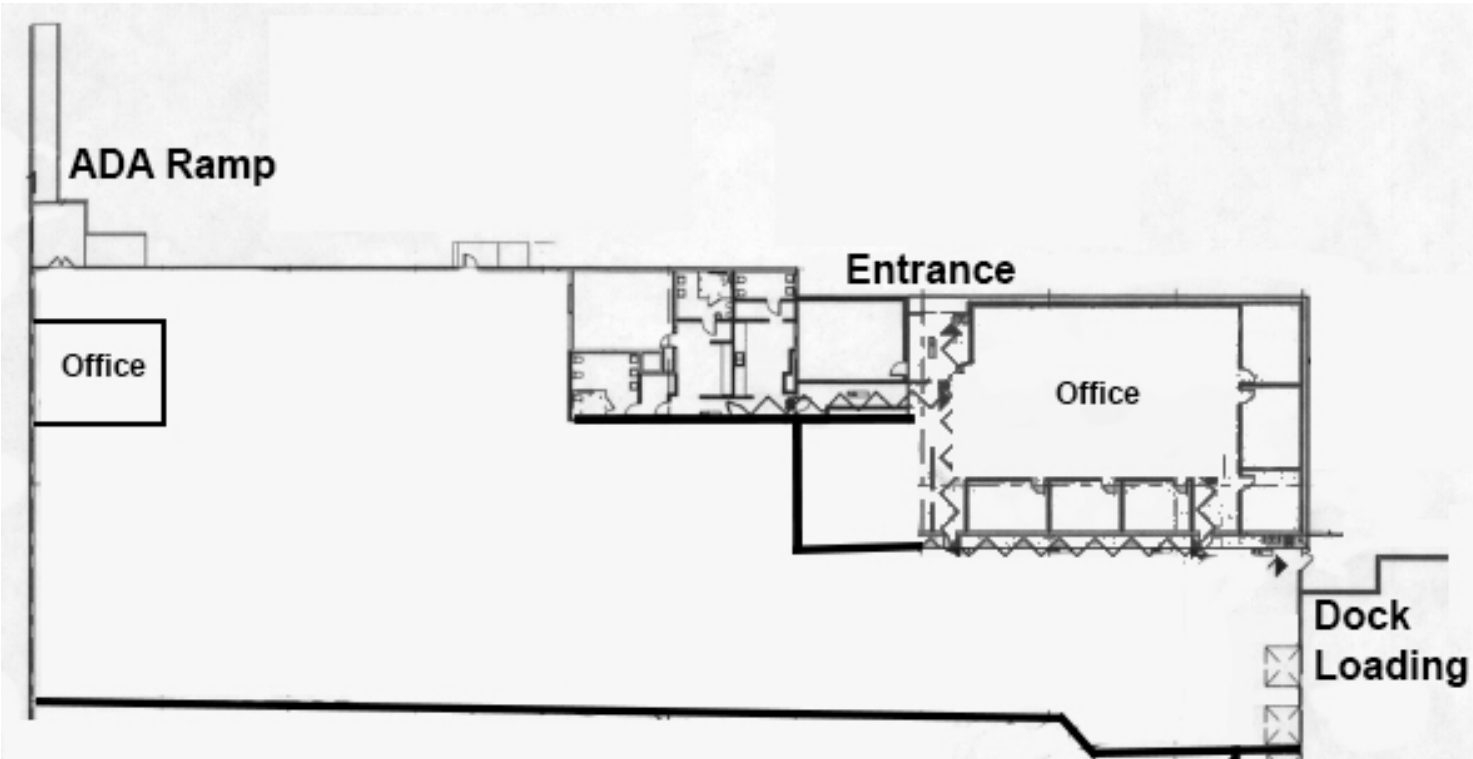
FOR SUBLEASE

6500 NE Halsey Street Unit B, Portland, OR 97213



**Eleanor Aschoff**  
503.972.7296  
eleanor@macadamforbes.com  
Licensed in OR & WA

LEASE TYPE | - TOTAL SPACE | Fully Leased OFFICE SF | 5,612 SF LEASE RATE | negotiable

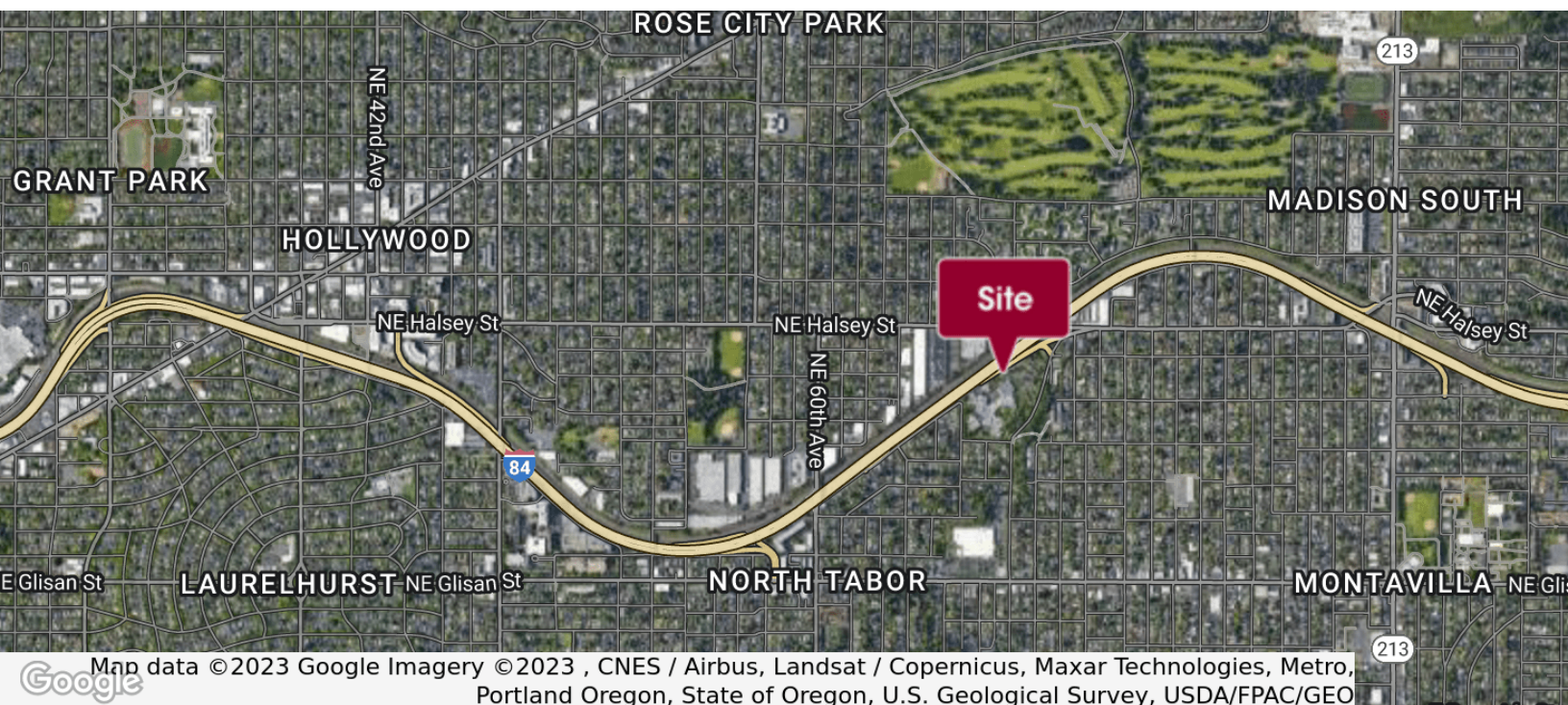


Eleanor Aschoff  
503.972.7296  
eleanor@macadamforbes.com  
Licensed in OR & WA



FOR SUBLEASE

6500 NE Halsey Street Unit B, Portland, OR 97213



**Eleanor Aschoff**  
503.972.7296  
eleanor@macadamforbes.com  
Licensed in OR & WA

All of the information contained herein was obtained either from the owner or other parties we consider reliable. We have no reason to doubt its accuracy, however we do not guarantee it.

MACADAMFORBES.COM | 503.227.2500