

Lot 14B Westbury Park

5 Westbury Park Way
Bluffton, South Carolina 29910

Property Highlights

- Be a Part of Bluffton's Class "A" Office Park
- Located at the Geographic Center of Greater Bluffton
- Many medical uses, banks and professional offices are already in the area
- Great access from Fording Island Road consisting of 2 full service stop lights and 2 other curb cuts
- Access is also available from both Buck Island Road and Simmonsville Roads
- Four lots total are available

Offering Summary

Sale Price:	\$389,000
Lot Size:	2.38 Acres
Bluffton Zoning:	General Mixed Use
2019 Property Taxes:	\$8,169

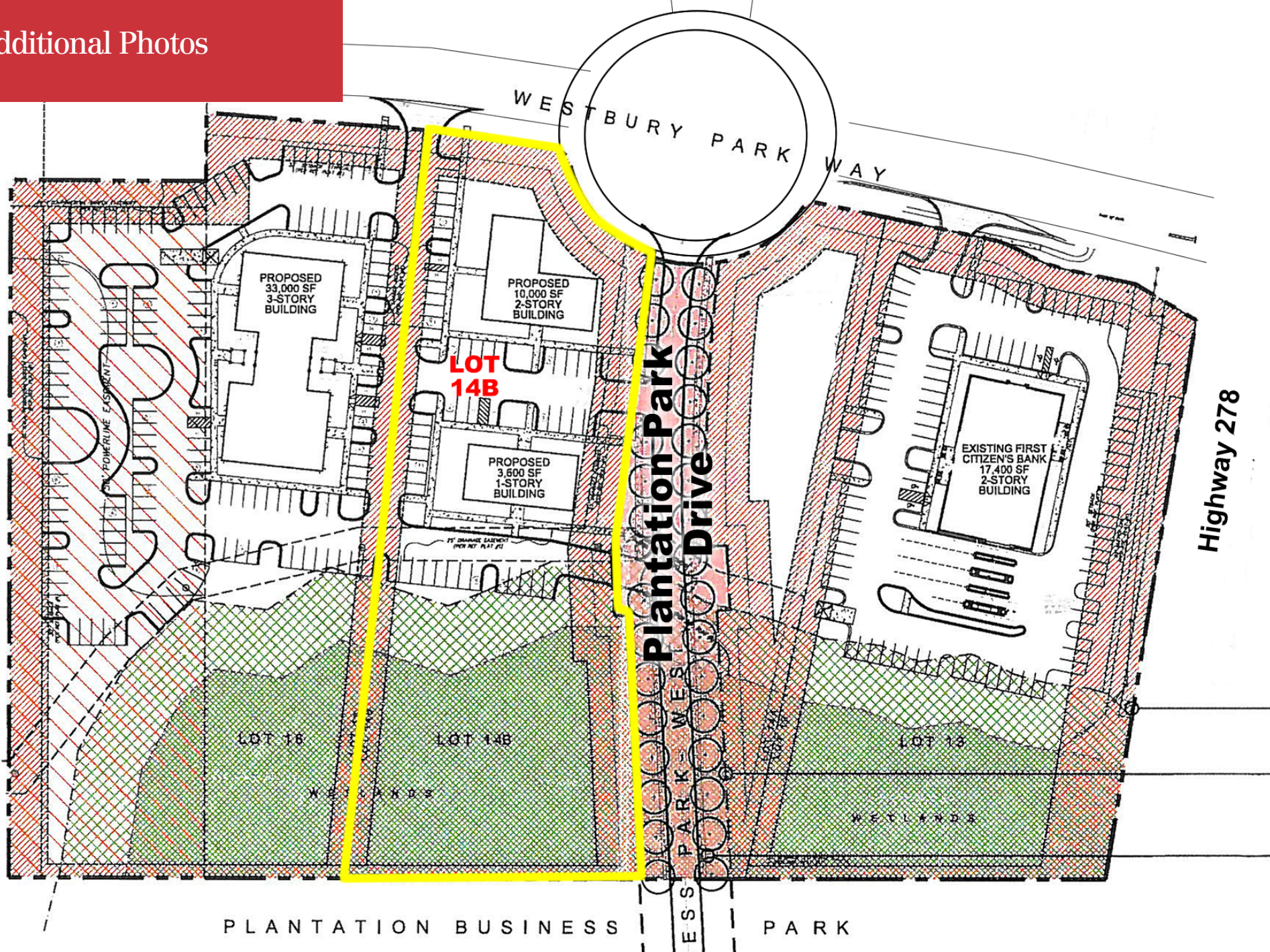


For more information

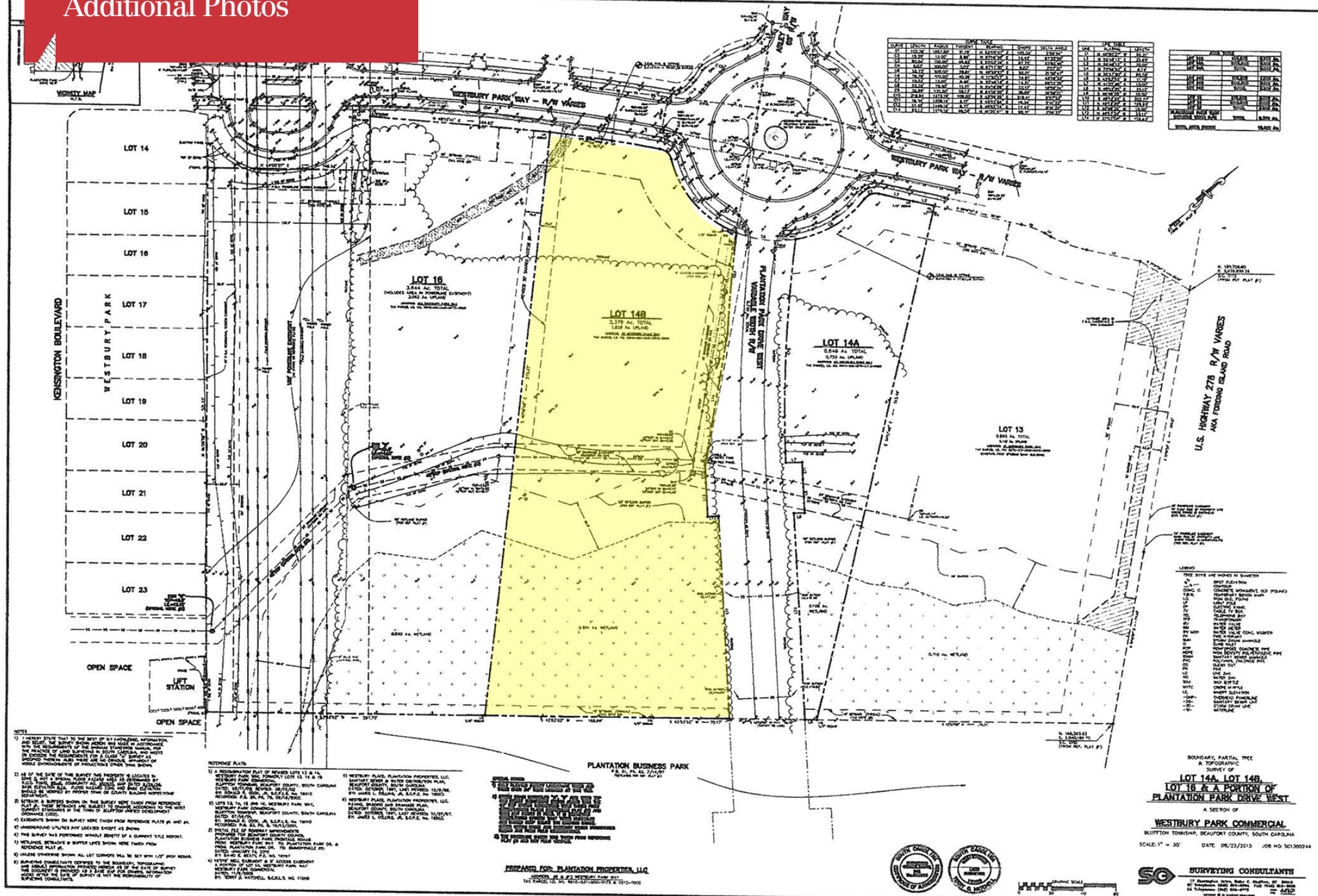
Baker Wilkins

843 837 4460 x2

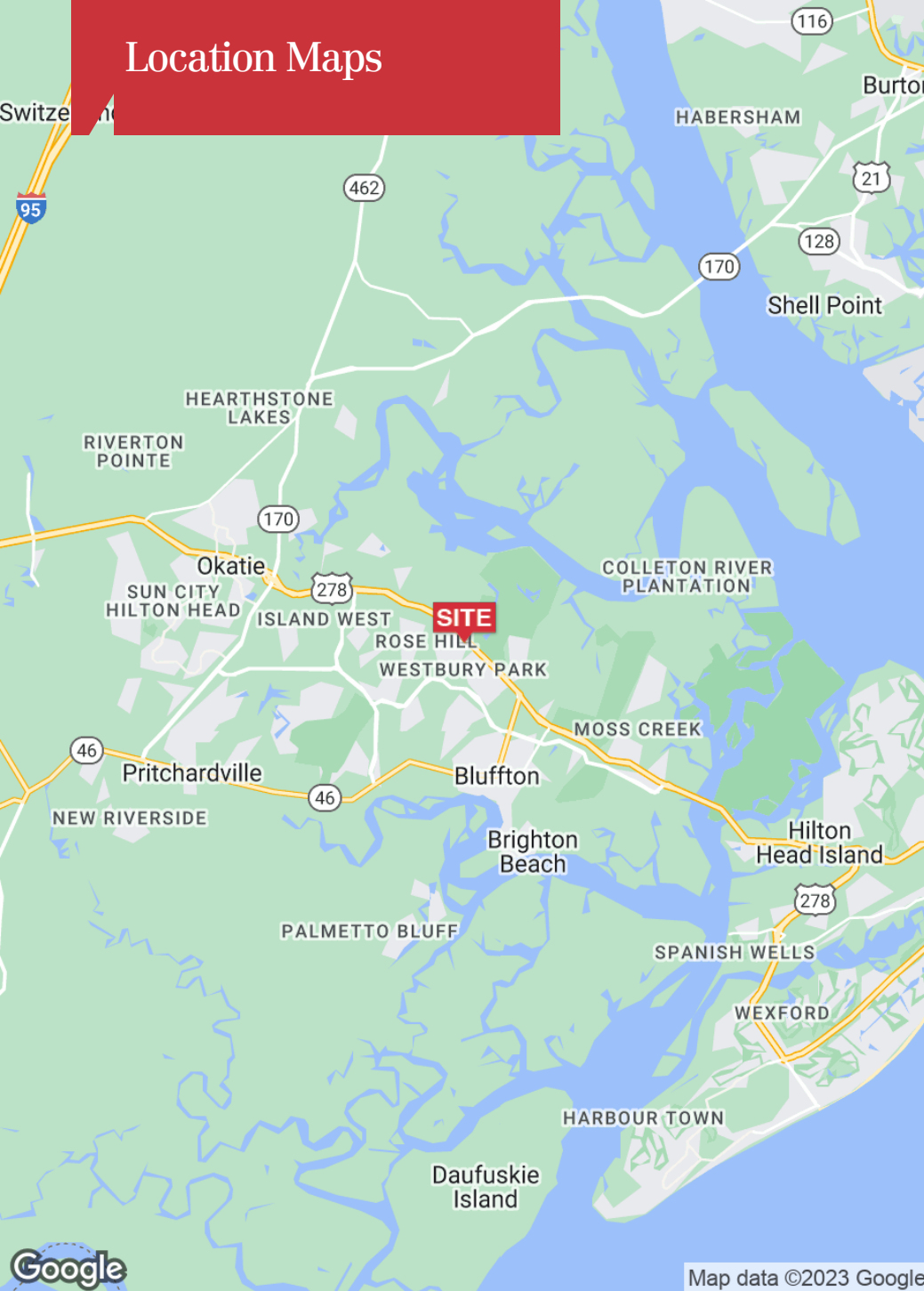
baker@naicarolinacharter.com

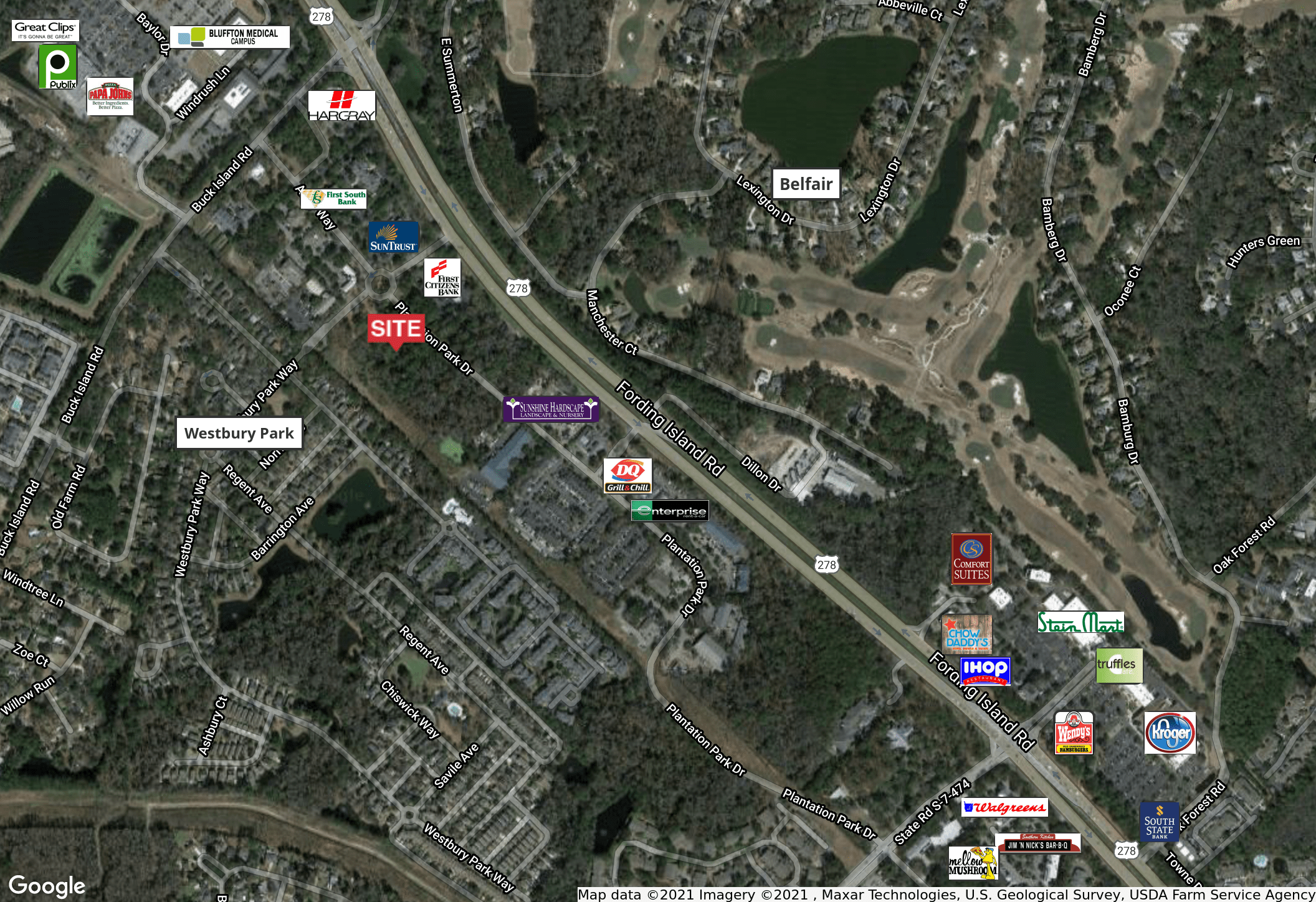


Additional Photos



Location Maps

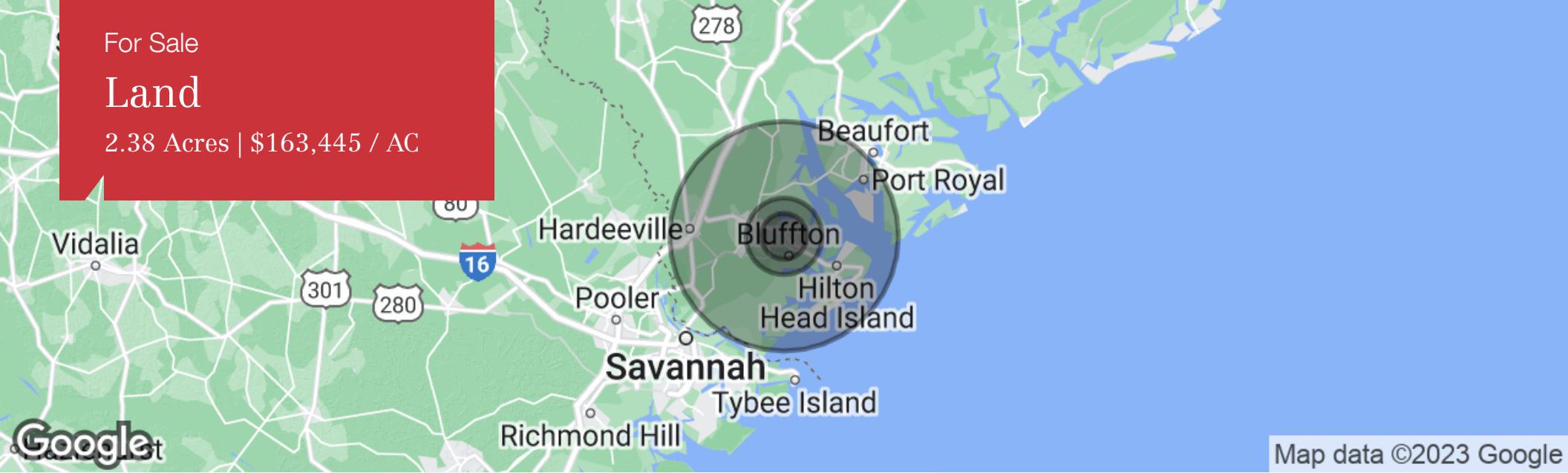




For Sale

Land

2.38 Acres | \$163,445 / AC



Map data ©2023 Google

Population	3 Miles	5 Miles	15 Miles
Total Population	15,979	30,733	132,560
Median Age	34.8	36.0	42.5
Median Age (Male)	34.9	35.9	42.0
Median Age (Female)	34.4	35.9	42.8
Households & Income	3 Miles	5 Miles	15 Miles
Total Households	6,089	11,832	54,250
# of Persons Per HH	2.6	2.6	2.4
Average HH Income	\$77,005	\$78,419	\$82,733
Average House Value	\$339,104	\$333,189	\$373,937

* Demographic data derived from 2020 ACS - US Census