

Lot 14A Westbury Park

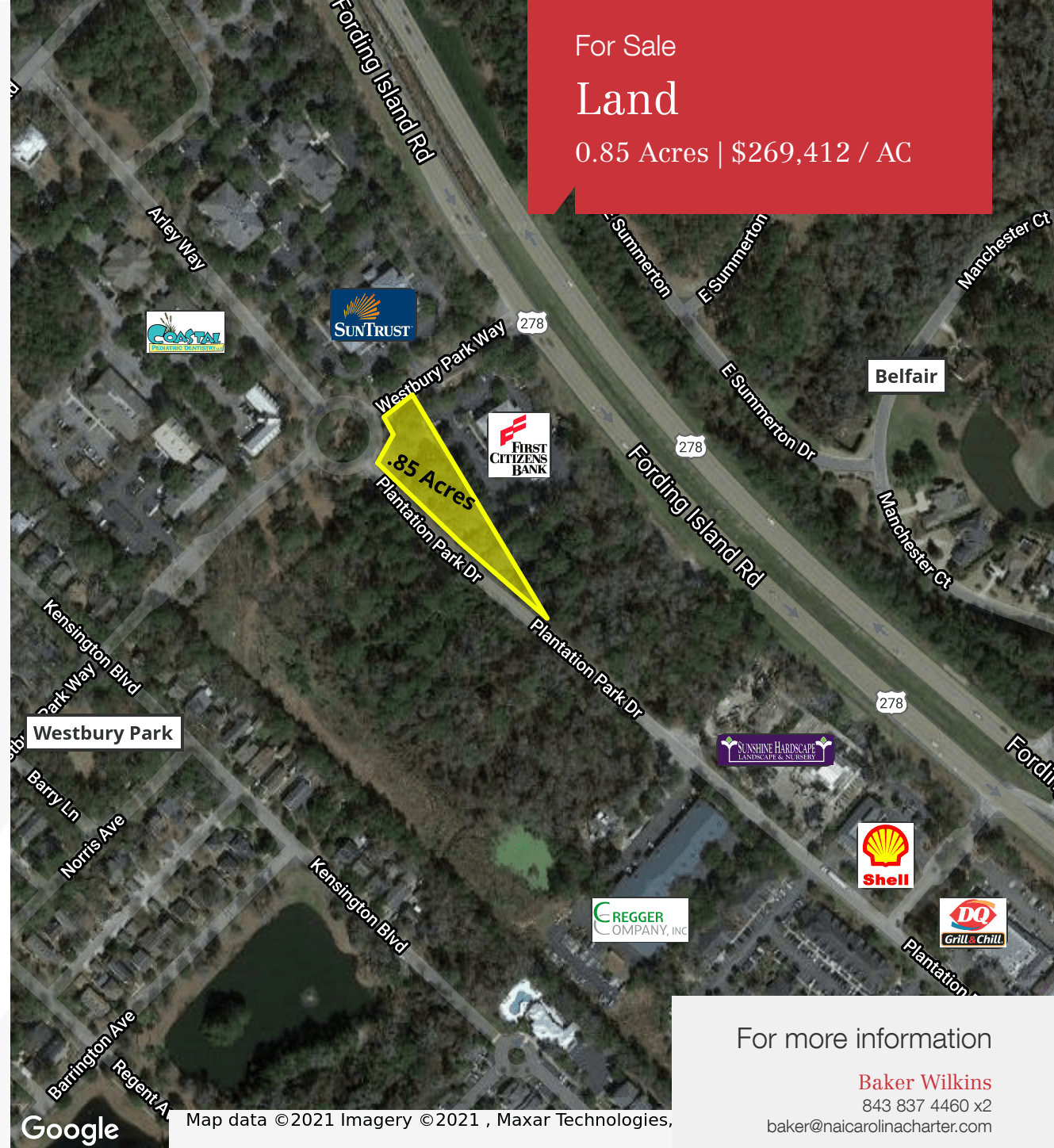
5 Westbury Park Way
Bluffton, South Carolina 29910

Property Highlights

- Be a Part of Bluffton's Class "A" Office Park
- Located at the Geographic Center of Greater Bluffton
- Many medical uses, banks and professional offices are already in the area
- Great access from Fording Island Road consisting of 2 full service stop lights and 2 other curb cuts
- Access is also available from both Buck Island Road and Simmonsville Roads
- Four lots total are available

Offering Summary

Sale Price:	\$229,000
Lot Size:	0.85 Acres
Bluffton Zoning:	General Mixed Use
2019 Property Taxes:	\$2,929



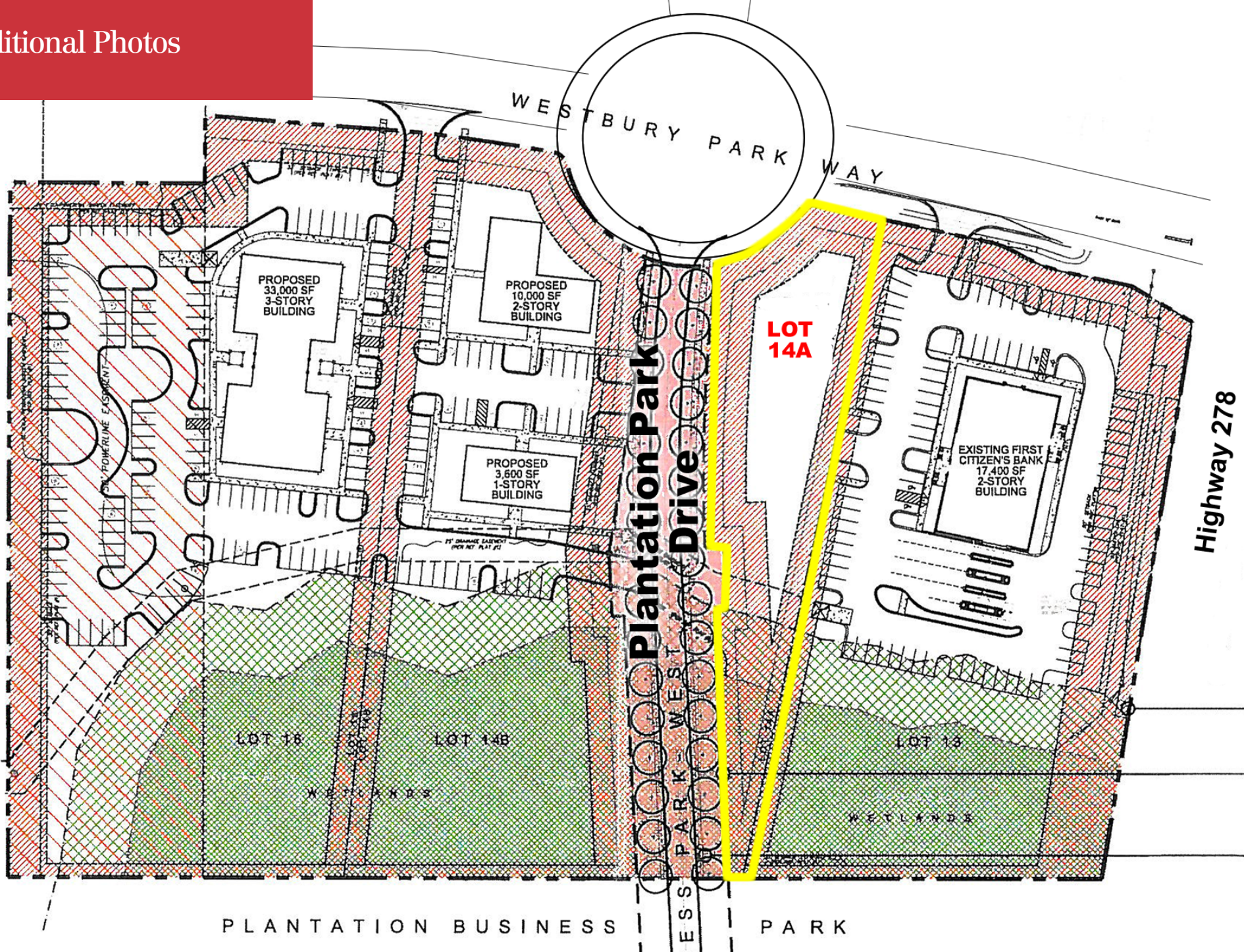
For more information

Baker Wilkins

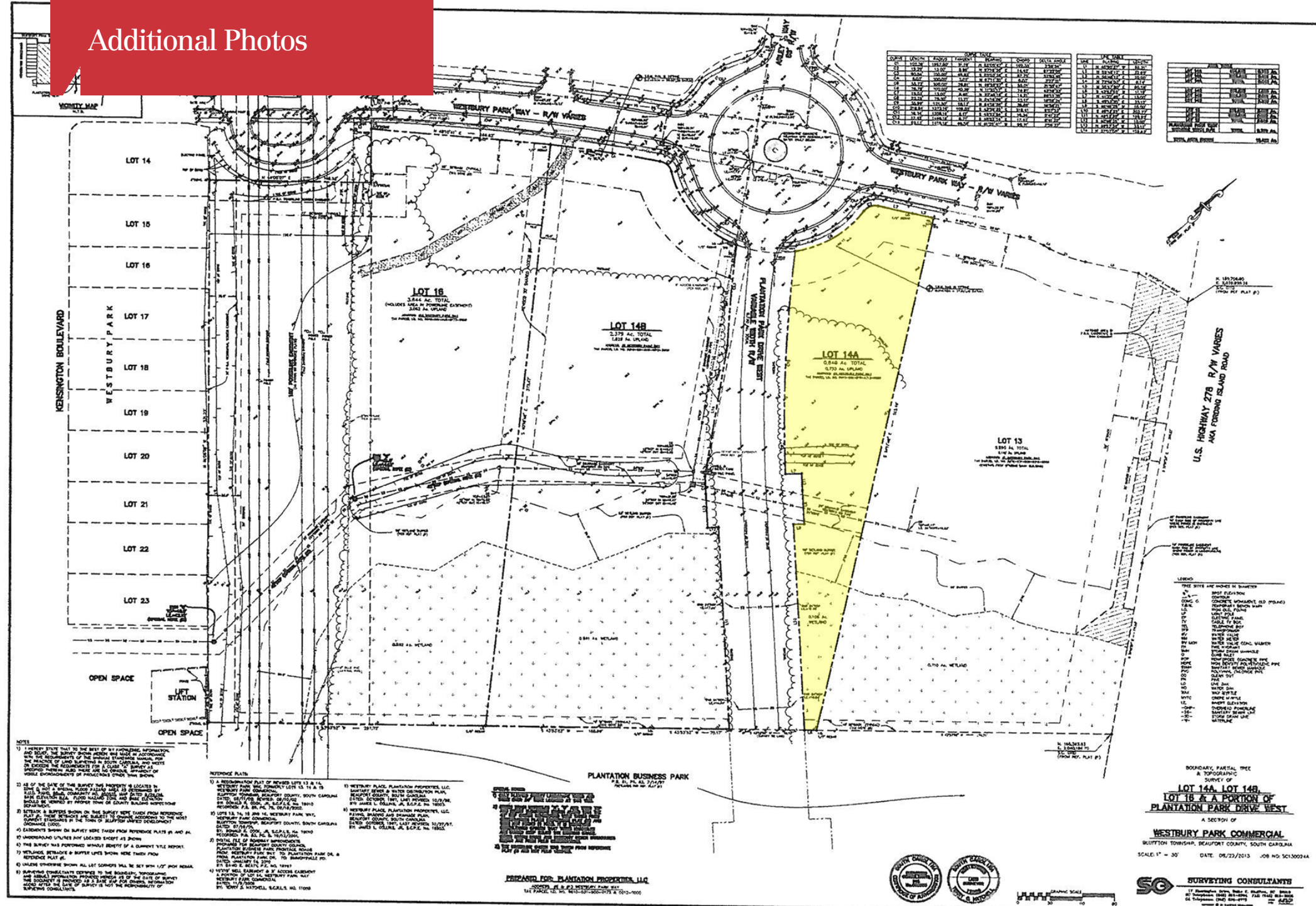
843 837 4460 x2

baker@naicarolinacharter.com

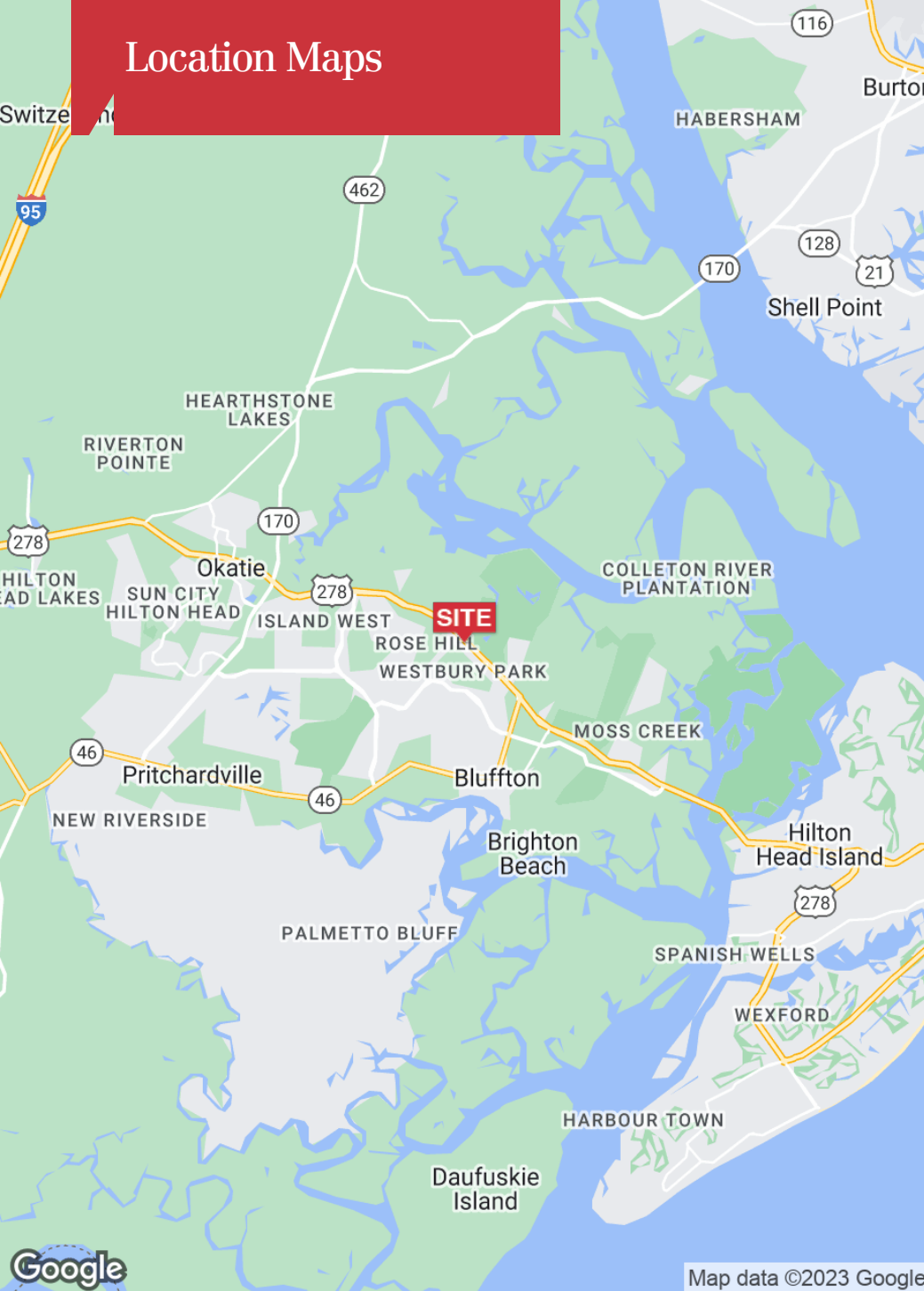
Additional Photos

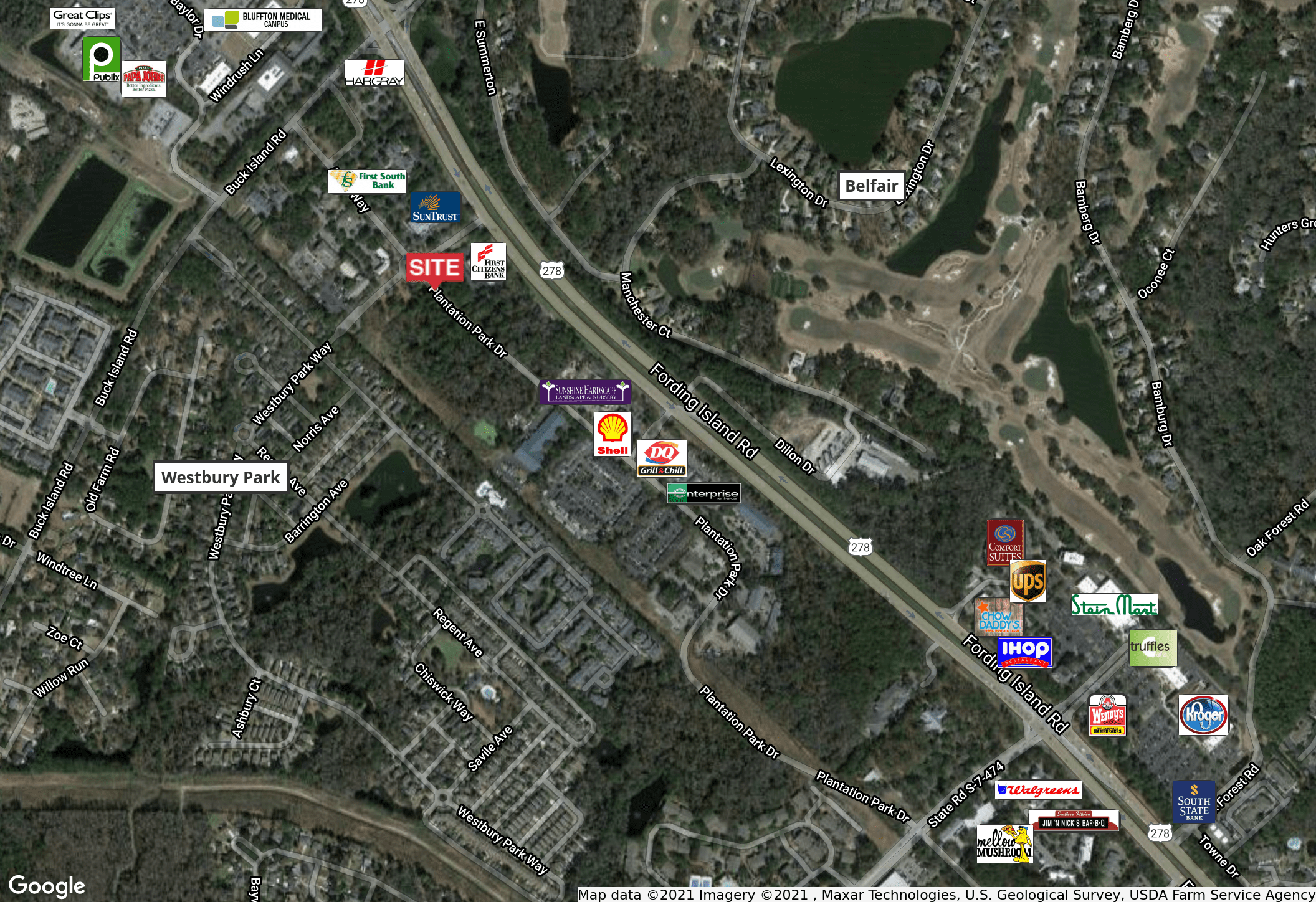


Additional Photos



Location Maps



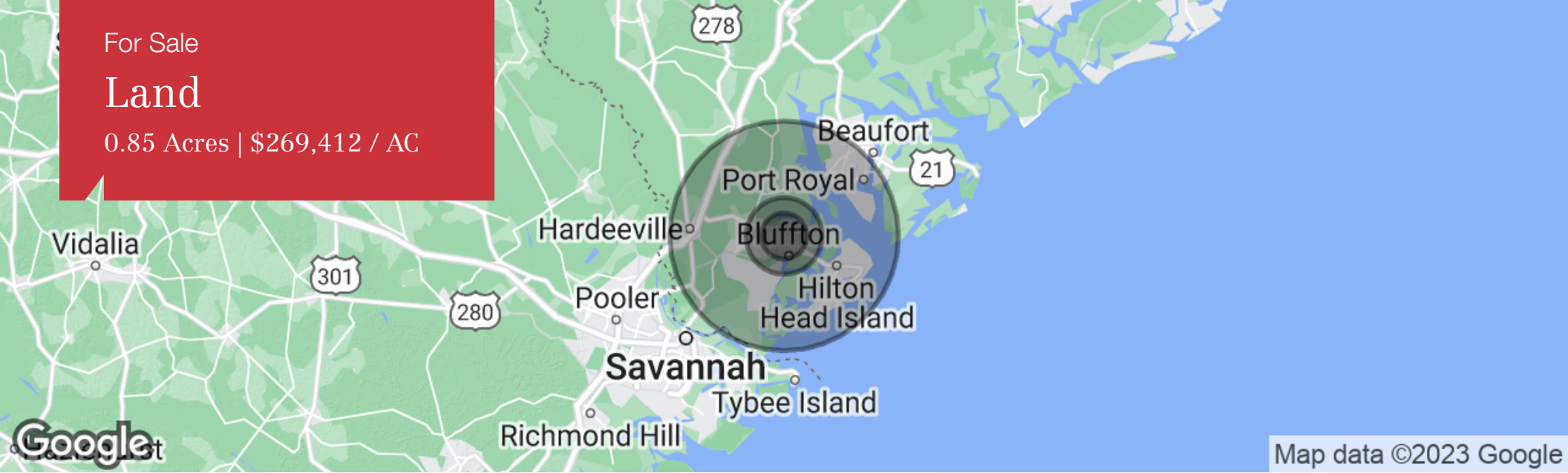


Map data © 2021 Imagery © 2021 , Maxar Technologies, U.S. Geological Survey, USDA Farm Service Agency

For Sale

Land

0.85 Acres | \$269,412 / AC



Population	3 Miles	5 Miles	15 Miles
Total Population	15,763	30,649	133,182
Median Age	34.9	36.0	42.3
Median Age (Male)	35.0	35.9	41.8
Median Age (Female)	34.5	35.9	42.5
Households & Income	3 Miles	5 Miles	15 Miles
Total Households	6,010	11,800	54,329
# of Persons Per HH	2.6	2.6	2.5
Average HH Income	\$77,227	\$78,456	\$82,446
Average House Value	\$339,188	\$333,168	\$371,900

* Demographic data derived from 2020 ACS - US Census