



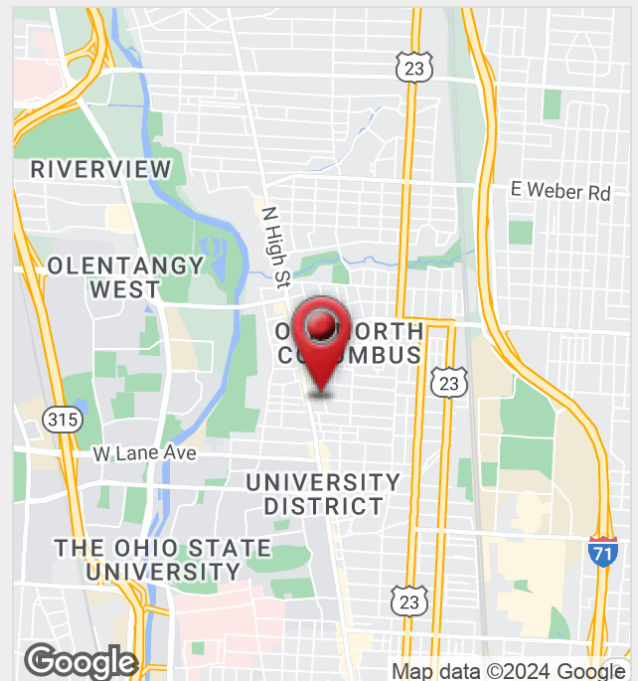
OSU North Campus MultiFamily

2305-2315 East Avenue, Columbus, Ohio 43202

Property Features

- Great OSU North Campus Investment Opportunity
- Well maintained 6-unit town homes
- 4,992 SF Bldg just 3 blocks north of OSU Campus & 1 block east of High St
- Neighborhood in high demand
- Each unit is 2 Bdr / 1 Bath, fully equipped kitchen, laundry, & central A/C
- Close walk to OSU, High Street, restaurants, & shopping
- COTA busline
- Professionally managed
- Current rental income: \$4,850 per month
- Curb Offers Only - Do Not Disturb Tenants

Sale Price: \$618,000



For more information:

Patrick Larrimer

614 629 5249 • plarrimer@ohioequities.com

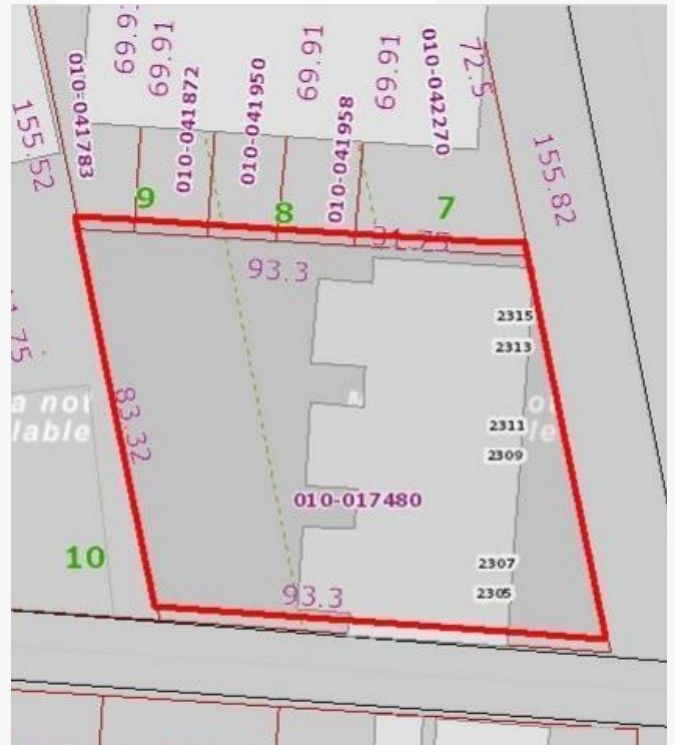
NO WARRANTY OR REPRESENTATION, EXPRESS OR IMPLIED, IS MADE AS TO THE ACCURACY OF THE INFORMATION CONTAINED HEREIN, AND THE SAME IS SUBMITTED SUBJECT TO ERRORS, OMISSIONS, CHANGE OF PRICE, RENTAL OR OTHER CONDITIONS, PRIOR SALE, LEASE OR FINANCING, OR WITHDRAWAL WITHOUT NOTICE, AND OF ANY SPECIAL LISTING CONDITIONS IMPOSED BY OUR PRINCIPALS NO WARRANTIES OR REPRESENTATIONS ARE MADE AS TO THE CONDITION OF THE PROPERTY OR ANY HAZARDS CONTAINED THEREIN ARE ANY TO BE IMPLIED.

NAI Ohio Equities
605 S Front Street, Columbus, OH 43215
614 224 2400
ohioequities.com

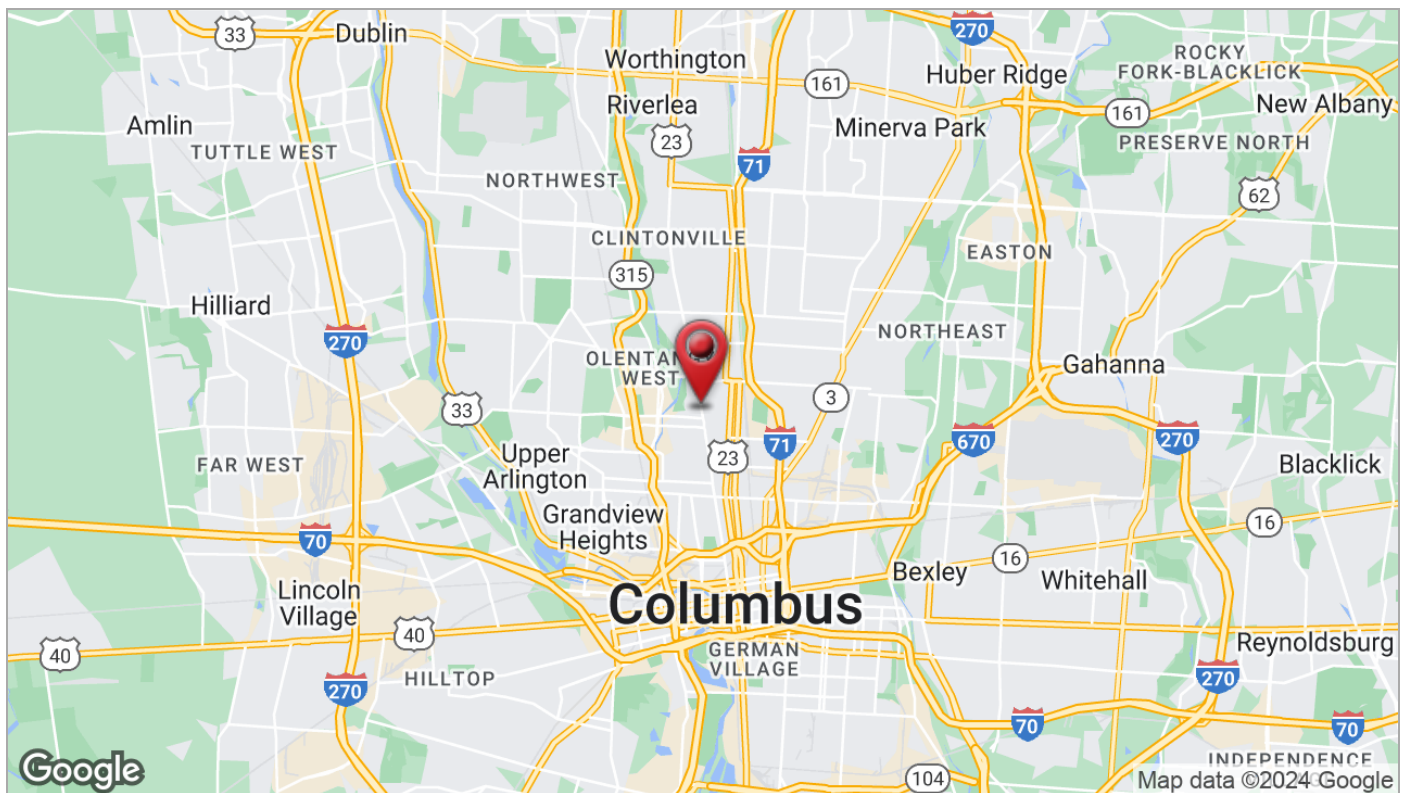
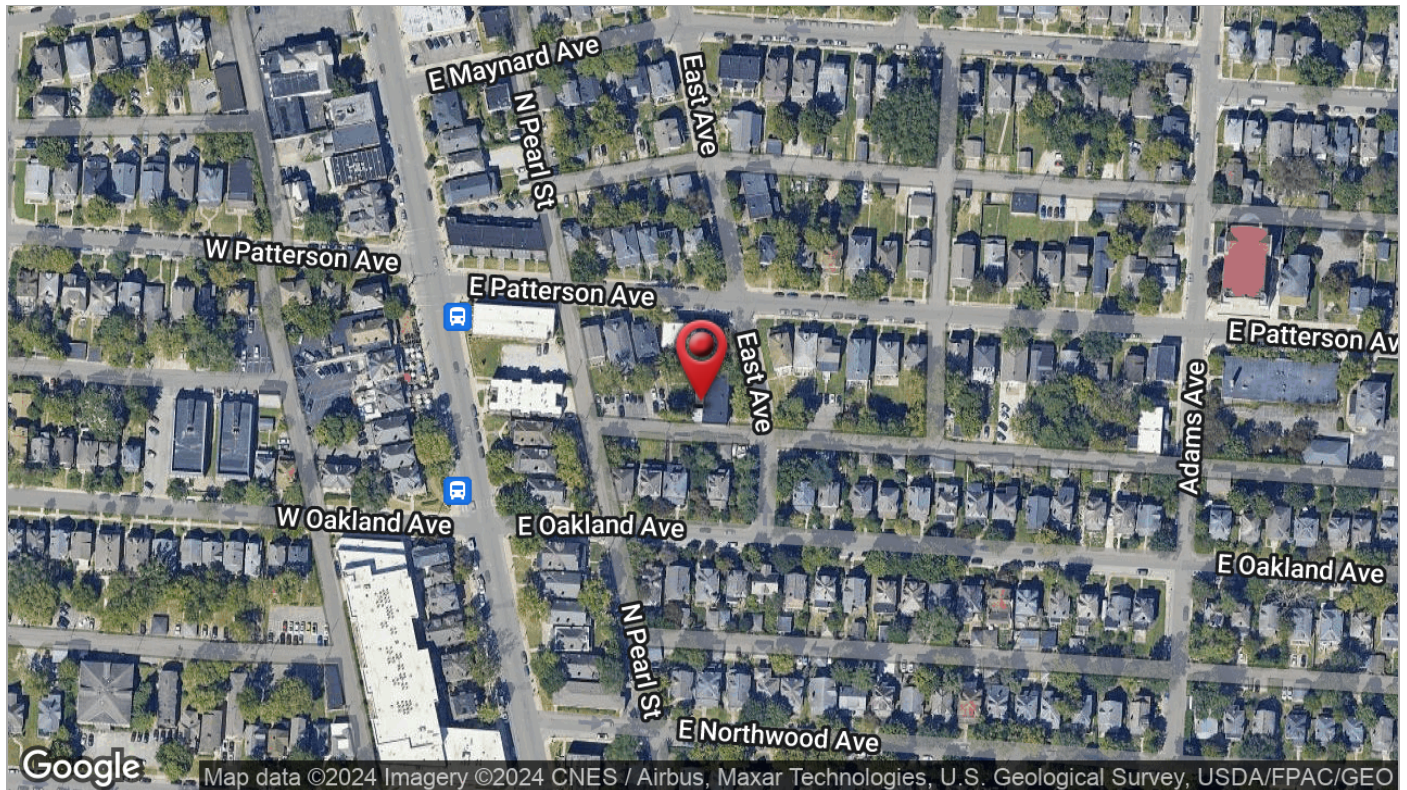
- Great OSU North Campus Investment Opportunity
- Well Maintained
- Professionally Managed

- Sale Price: \$618,000.00
- # of Units: 6
- Unit Mix: 2 Bedroom / 1 Bath
- Fully Equipped Kitchens
- Washer & Dryer Included
- Large Backyard

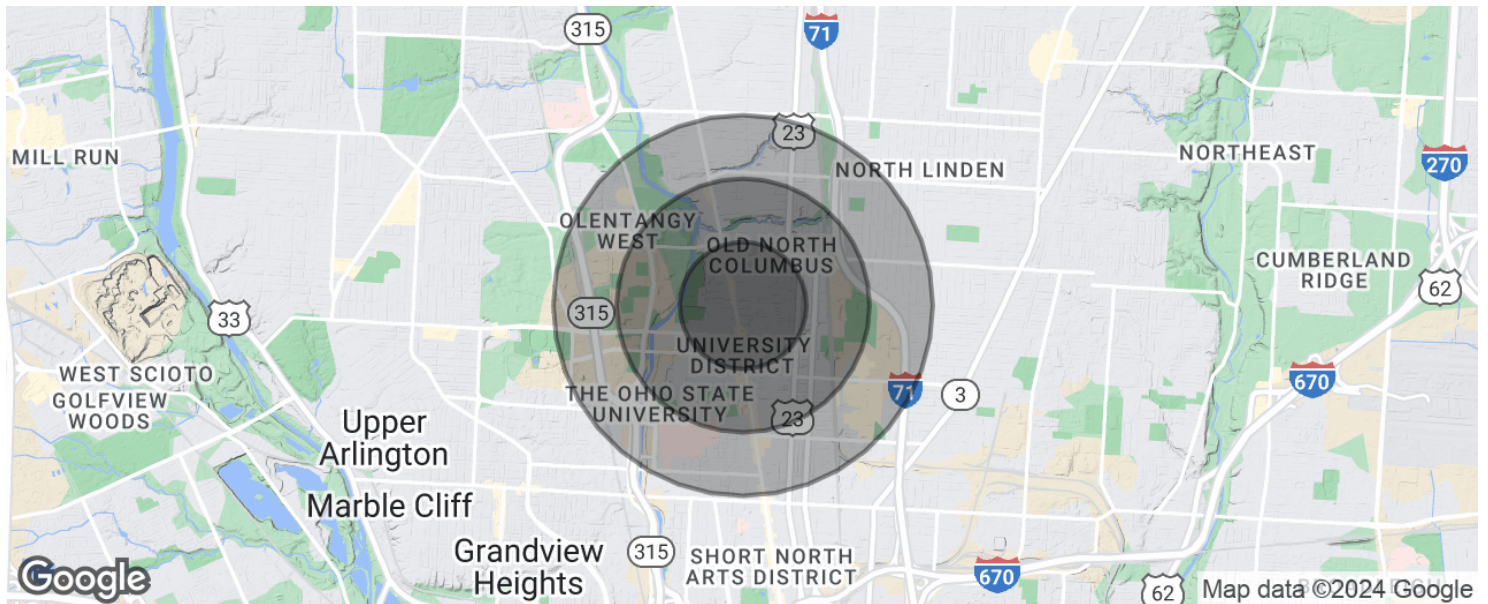
- OSU North Campus Area
- Close walk to OSU and High Street
- COTA Busline
- Amenities Nearby
- Neighborhood in High Demand











POPULATION

	0.5 MILES	1 MILE	1.5 MILES
Total population	11,822	40,065	65,613
Median age	22.5	22.8	24.1
Median age (Male)	22.8	22.9	24.0
Median age (Female)	22.3	23.0	24.5

HOUSEHOLDS & INCOME

	0.5 MILES	1 MILE	1.5 MILES
Total households	3,876	11,811	22,091
# of persons per HH	3.1	3.4	3.0
Average HH income	\$32,102	\$33,515	\$35,780
Average house value	\$188,543	\$183,438	\$185,605

* Demographic data derived from 2020 ACS - US Census