

EXECUTIVE SUMMARY

ATKINS

COMMERCIAL PROPERTIES

INDUSTRIAL PROPERTY FOR SALE

4,800 SQ. FT. WAREHOUSE ON 4.54 ACRES

4166 MIKE PADGETT HWY, AUGUSTA, GA 30906



OFFERING SUMMARY

\$489,000

4.54 Acres

2021

4,800

Heavy Industrial (HI)

Augusta

PROPERTY OVERVIEW

4,800 sq. ft. Shell Warehouse Building on 4.54 acre parcel located on Mike Padgett Highway next to Lewis Bus Lines. The 4,800 sf shell Warehouse Building was Built in 2021 and has 3 Drive In Doors and 23' Clear Ceiling Height. It is Fully Insulated with Plumbing stubbed up for future completion. Approximately 2.25 acres on front of the property is already cleared and graded and entire property is fenced. The back portion is wooded. The property has 208.9' of frontage on Mike Padgett Highway and is zoned (HI) Heavy Industrial.

PROPERTY HIGHLIGHTS

- 4,800 sq. ft. Shell Warehouse Building
- 4.54 Acres
- Entire Property is Fenced
- Front Half is Cleared
- Zoned Heavy Industrial (HI)

For More Information:

Scott A. Atkins, SIOR, CCIM

President

scott@atkinsrealty.com

The information contained herein has been obtained through sources deemed reliable but cannot be guaranteed as to its accuracy. Any information of special interest should be obtained through independent verification.



706.650.1446 | 208 A Pitcarin Way Augusta, GA 30909

ADDITIONAL PHOTOS

ATKINS
COMMERCIAL PROPERTIES

INDUSTRIAL PROPERTY FOR SALE
4,800 SQ. FT. WAREHOUSE ON 4.54 ACRES
4166 MIKE PADGETT HWY, AUGUSTA, GA 30906



For More Information:

Scott A. Atkins, SIOR, CCIM

President

scott@atkinsrealty.com

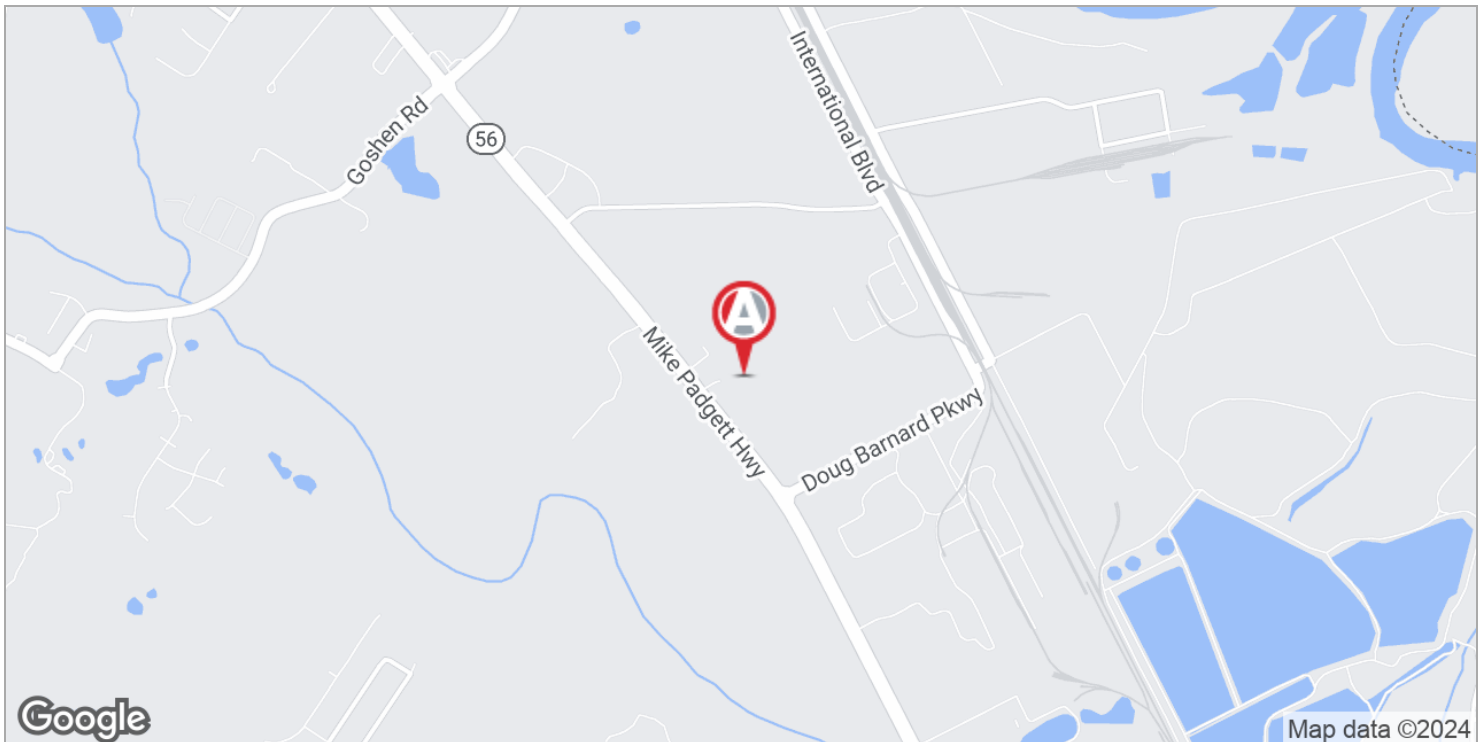
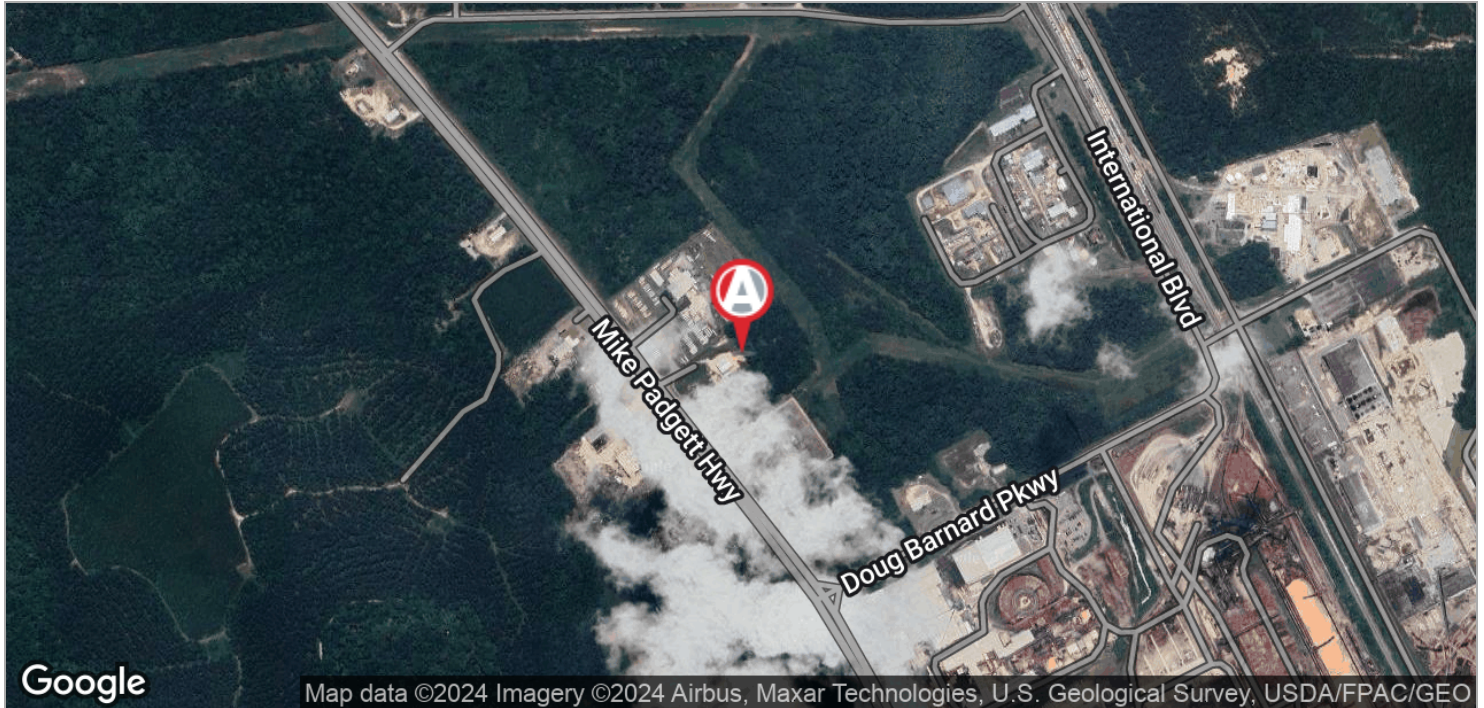


706.650.1446 | 208 A Pitcarin Way Augusta, GA 30909

INDUSTRIAL PROPERTY FOR SALE

4,800 SQ. FT. WAREHOUSE ON 4.54 ACRES

4166 MIKE PADGETT HWY, AUGUSTA, GA 30906



For More Information:

Scott A. Atkins, SIOR, CCIM

President

scott@atkinsrealty.com

