



802 Pierce Street | Omaha, NE 68108

\$6.95 PSF (NNN)

Property Features

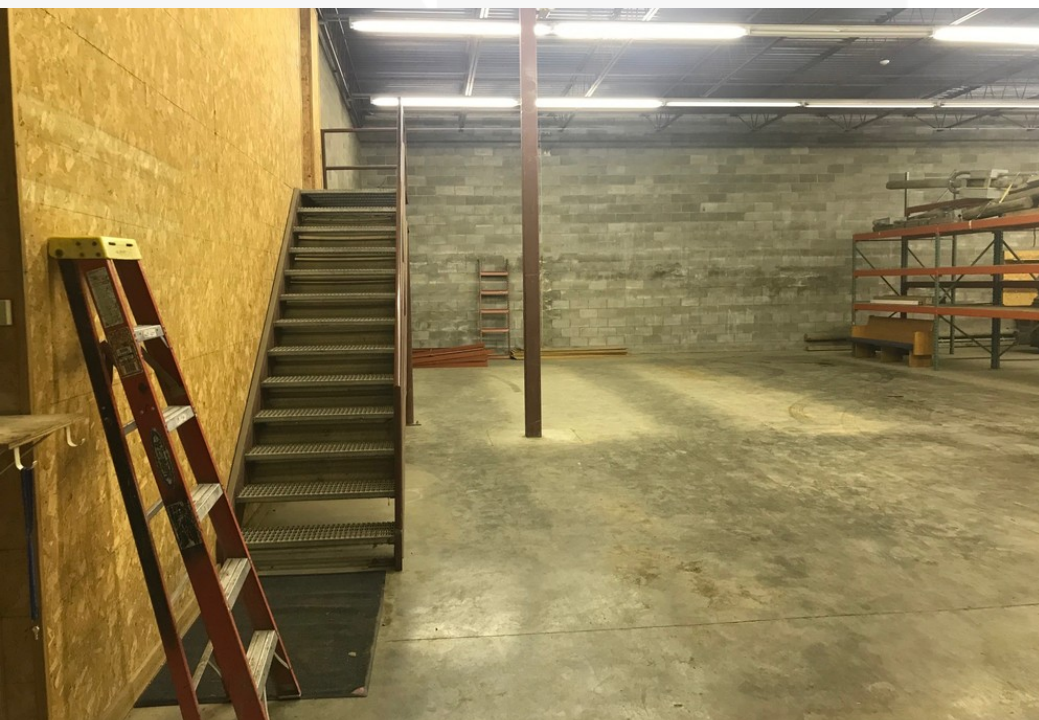
- 5,500 SF of warehouse/storage with 1,600 SF office space with kitchen
- Two drive-in doors and two outside docks
- Turnkey building in the heart of the Little Italy Neighborhood
- Newly completed projects and development under construction nearby
- Real estate taxes and insurance estimated to be \$1.13 PSF

13321 California Street, Suite 105
Omaha, NE 68154
402 255 6060
nainpdodge.com

Trenton B. Magid
Executive Vice President
402 510 5263
trentonmagid@npdodge.com



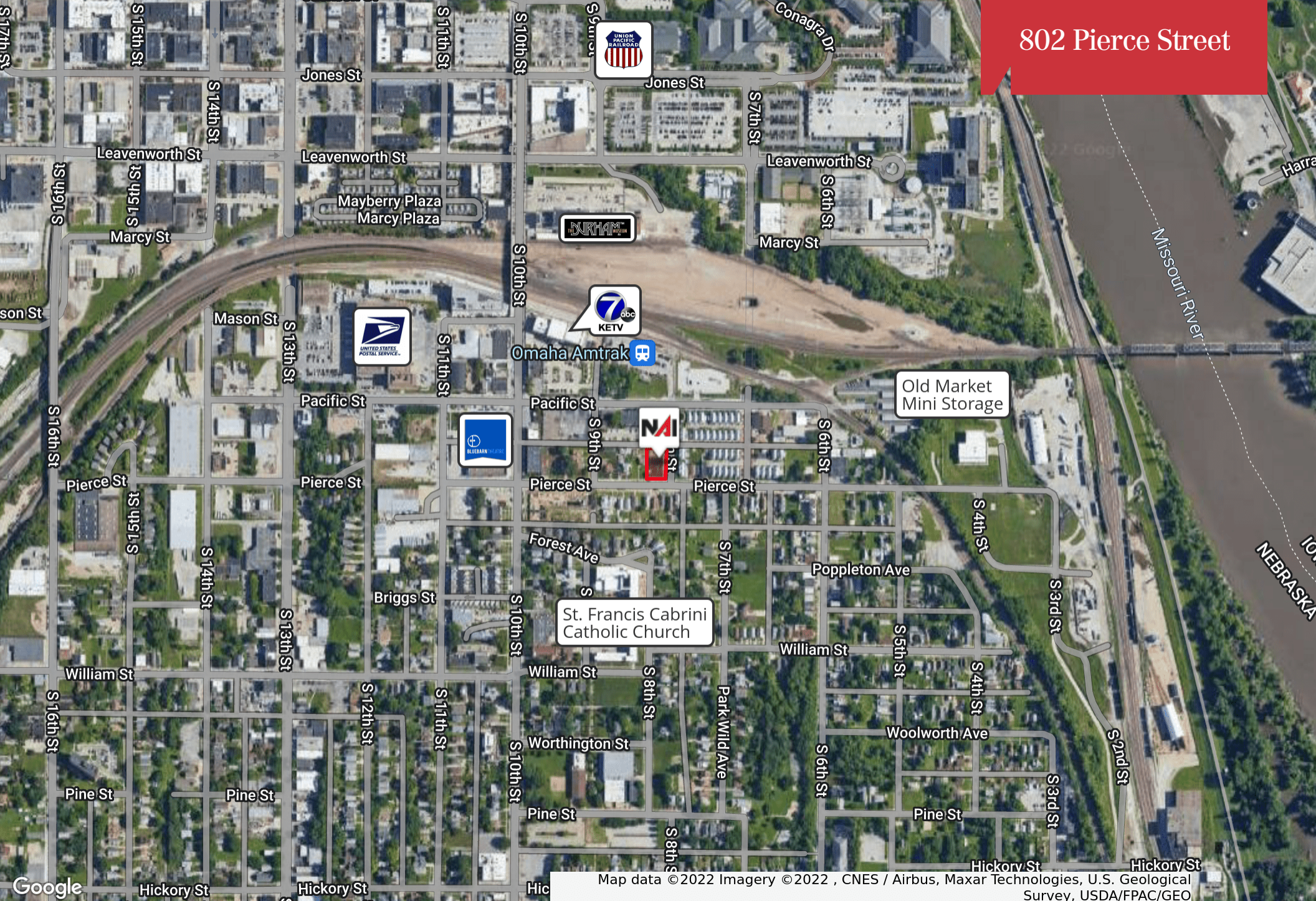
802 Pierce Street



802 Pierce Street



802 Pierce Street



Map data © 2022 Imagery © 2022 , CNES / Airbus, Maxar Technologies, U.S. Geological Survey, USDA/FPAC/GEO



Trenton B. Magid
Executive Vice President
+1 402 510 5263
trentonmagid@npdodge.com

13321 California Street, Suite 105
Omaha, NE 68154
402 255 6060 tel
nainpdodge.com