

FOR LEASE | OFFICE

1913 ATLANTIC AVENUE

1913 Atlantic Avenue | Wall, NJ 08736



Price Reduced

PROPERTY SUMMARY

Available SF:

±

Office Space for Lease on Atlantic Avenue

Lease Rate:

N/A

Lot Size:

± 13.69 Acres

Building Size:

± 128,164 SF

Building Class:

B

Cross Streets:

Routes 34 and 35

PROPERTY OVERVIEW

LOCATION OVERVIEW

Located on Atlantic Avenue, across from the Atlantic Club, with direct access to Routes 34 and 35 and 3 miles to the Garden State Parkway and I-195.

PROPERTY HIGHLIGHTS

- Unit has private offices, bull pen area, conference room and break room
- Parking in front and rear of building
- Rental rate does not include tenant electric

FOR MORE INFORMATION, PLEASE CONTACT:

Douglas Sitar | P: 732.623.2135 | C: 732.859.2144 | dsitar@sitarcompany.com
Robert JanTausch | P: 732.623.5615 | C: 908.513.5350 | jantausch@sitarcompany.com

1481 Oak Tree Road
Iselin, NJ 08830
T: 732.283.9000 | F: 732.283.3103
www.sitarcompany.com



Disclaimer: ALL INFORMATION FURNISHED REGARDING PROPERTY FOR SALE, RENTAL OR FINANCING IS FROM SOURCES DEEMED RELIABLE, BUT NO WARRANTY OR REPRESENTATION IS MADE AS TO THE ACCURACY THEREOF AND SAME IS SUBMITTED SUBJECT TO ERRORS, OMISSIONS, CHANGES OF PRICE, RENTAL OR OTHER CONDITIONS, PRIOR SALE, LEASE OR FINANCING OR WITHDRAWAL WITHOUT NOTICE.

FOR LEASE | OFFICE

1913 ATLANTIC AVENUE

1913 Atlantic Avenue | Wall, NJ 08736



FOR MORE INFORMATION, PLEASE CONTACT:

Douglas Sitar | P: 732.623.2135 | C: 732.859.2144 | dsitar@sitarcompany.com
Robert JanTausch | P: 732.623.5615 | C: 908.513.5350 | jantausch@sitarcompany.com

1481 Oak Tree Road
Iselin, NJ 08830
T: 732.283.9000 | F: 732.283.3103
www.sitarcompany.com



Disclaimer: ALL INFORMATION FURNISHED REGARDING PROPERTY FOR SALE, RENTAL OR FINANCING IS FROM SOURCES DEEMED RELIABLE, BUT NO WARRANTY OR REPRESENTATION IS MADE AS TO THE ACCURACY THEREOF AND SAME IS SUBMITTED SUBJECT TO ERRORS, OMISSIONS, CHANGES OF PRICE, RENTAL OR OTHER CONDITIONS, PRIOR SALE, LEASE OR FINANCING OR WITHDRAWAL WITHOUT NOTICE.

FOR LEASE | OFFICE

1913 ATLANTIC AVENUE

1913 Atlantic Avenue | Wall, NJ 08736



FOR MORE INFORMATION, PLEASE CONTACT:

Douglas Sitar | P: 732.623.2135 | C: 732.859.2144 | dsitar@sitarcompany.com
Robert JanTausch | P: 732.623.5615 | C: 908.513.5350 | jantausch@sitarcompany.com

1481 Oak Tree Road
Iselin, NJ 08830
T: 732.283.9000 | F: 732.283.3103
www.sitarcompany.com



Disclaimer: ALL INFORMATION FURNISHED REGARDING PROPERTY FOR SALE, RENTAL OR FINANCING IS FROM SOURCES DEEMED RELIABLE, BUT NO WARRANTY OR REPRESENTATION IS MADE AS TO THE ACCURACY THEREOF AND SAME IS SUBMITTED SUBJECT TO ERRORS, OMISSIONS, CHANGES OF PRICE, RENTAL OR OTHER CONDITIONS, PRIOR SALE, LEASE OR FINANCING OR WITHDRAWAL WITHOUT NOTICE.

1913 ATLANTIC AVENUE

Sitar
Realty Company

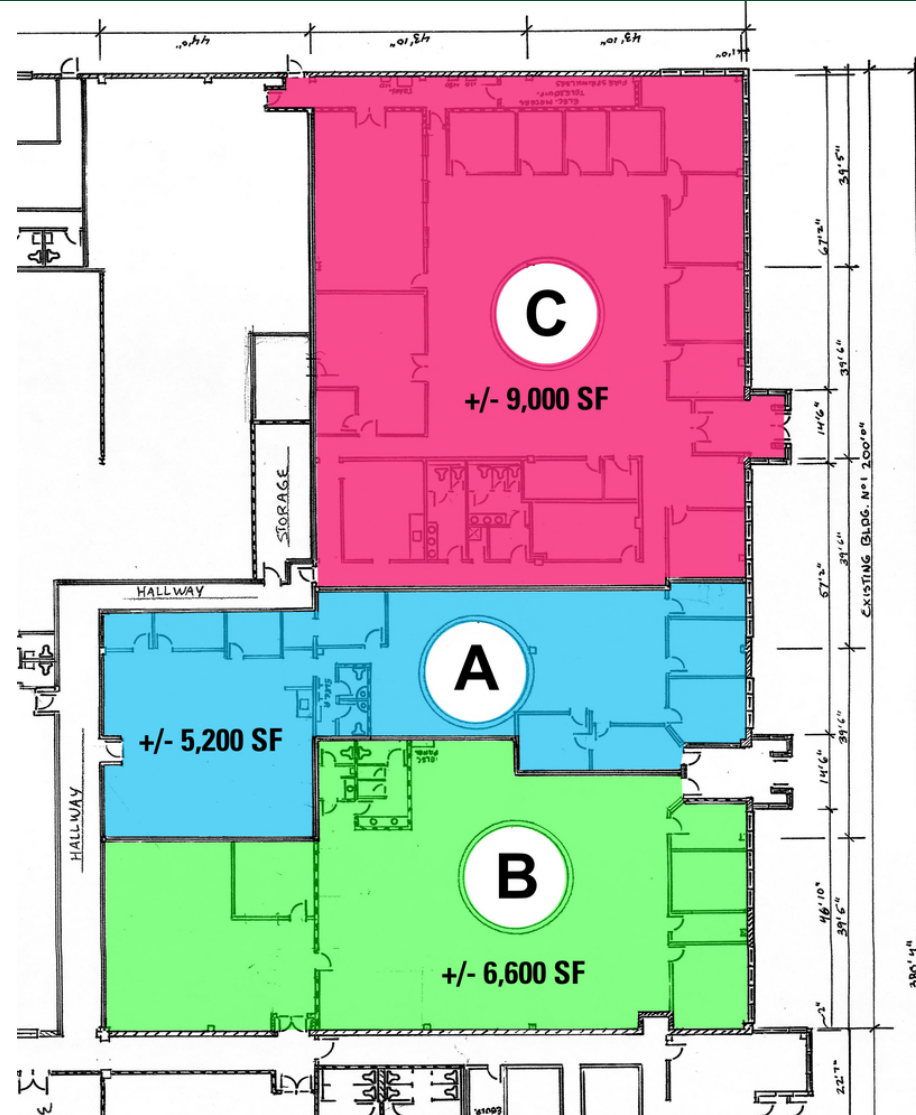


Disclaimer: ALL INFORMATION FURNISHED REGARDING PROPERTY FOR SALE, RENTAL OR FINANCING IS FROM SOURCES DEEMED RELIABLE, BUT NO WARRANTY OR REPRESENTATION IS MADE AS TO THE ACCURACY THEREOF AND SAME IS SUBMITTED SUBJECT TO ERRORS, OMISSIONS, CHANGES OF PRICE, RENTAL OR OTHER CONDITIONS, PRIOR SALE, LEASE OR FINANCING OR WITHDRAWAL WITHOUT NOTICE.

FOR LEASE | OFFICE

1913 ATLANTIC AVENUE

1913 Atlantic Avenue | Wall, NJ 08736



FOR MORE INFORMATION, PLEASE CONTACT:

Douglas Sitar | P: 732.623.2135 | C: 732.859.2144 | dsitar@sitarcompany.com
Robert JanTausch | P: 732.623.5615 | C: 908.513.5350 | jantausch@sitarcompany.com

1481 Oak Tree Road
Iselin, NJ 08830
T: 732.283.9000 | F: 732.283.3103
www.sitarcompany.com

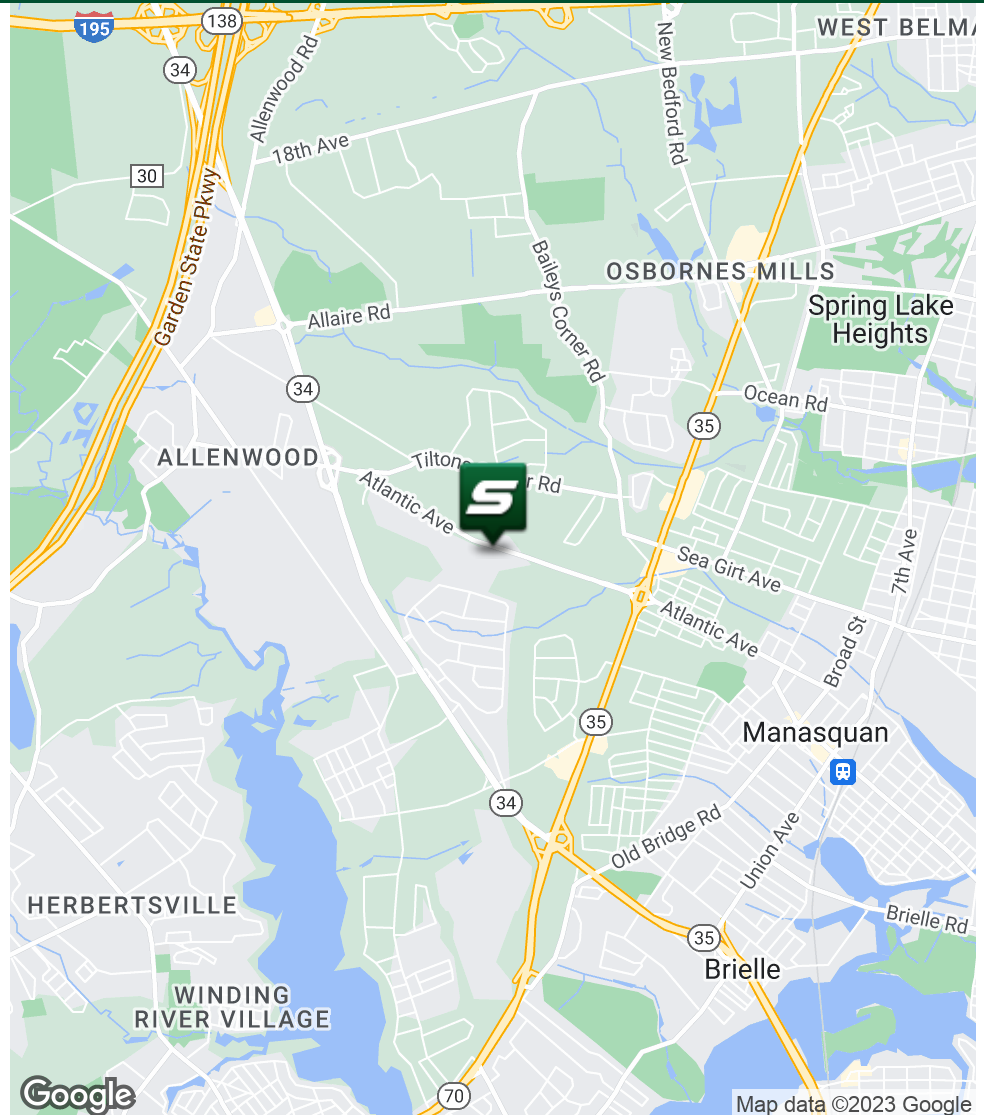
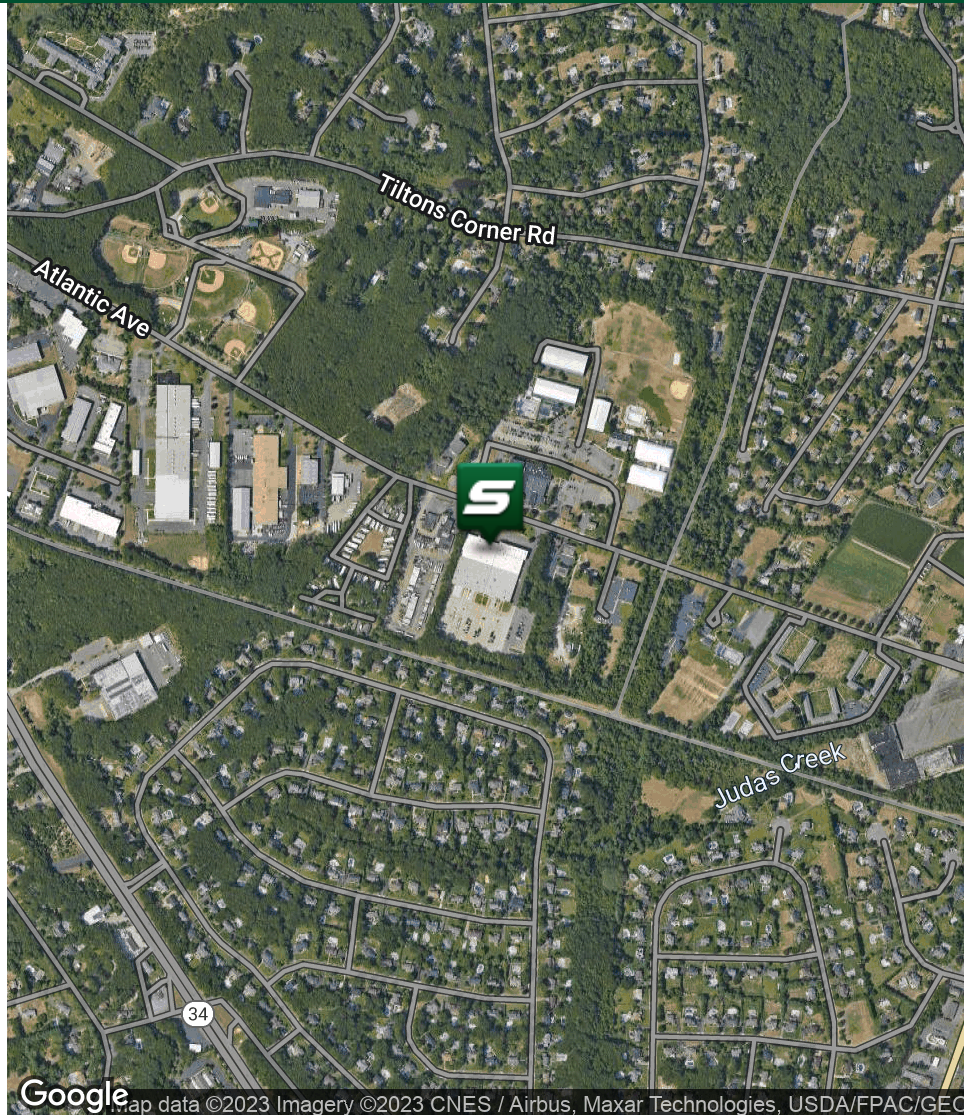


Disclaimer: ALL INFORMATION FURNISHED REGARDING PROPERTY FOR SALE, RENTAL OR FINANCING IS FROM SOURCES DEEMED RELIABLE, BUT NO WARRANTY OR REPRESENTATION IS MADE AS TO THE ACCURACY THEREOF AND SAME IS SUBMITTED SUBJECT TO ERRORS, OMISSIONS, CHANGES OF PRICE, RENTAL OR OTHER CONDITIONS, PRIOR SALE, LEASE OR FINANCING OR WITHDRAWAL WITHOUT NOTICE.

FOR LEASE | OFFICE

1913 ATLANTIC AVENUE

1913 Atlantic Avenue | Wall, NJ 08736



FOR MORE INFORMATION, PLEASE CONTACT:

Douglas Sitar | P: 732.623.2135 | C: 732.859.2144 | dsitar@sitarcompany.com
Robert JanTausch | P: 732.623.5615 | C: 908.513.5350 | jantausch@sitarcompany.com

1481 Oak Tree Road
Iselin, NJ 08830
T: 732.283.9000 | F: 732.283.3103
www.sitarcompany.com

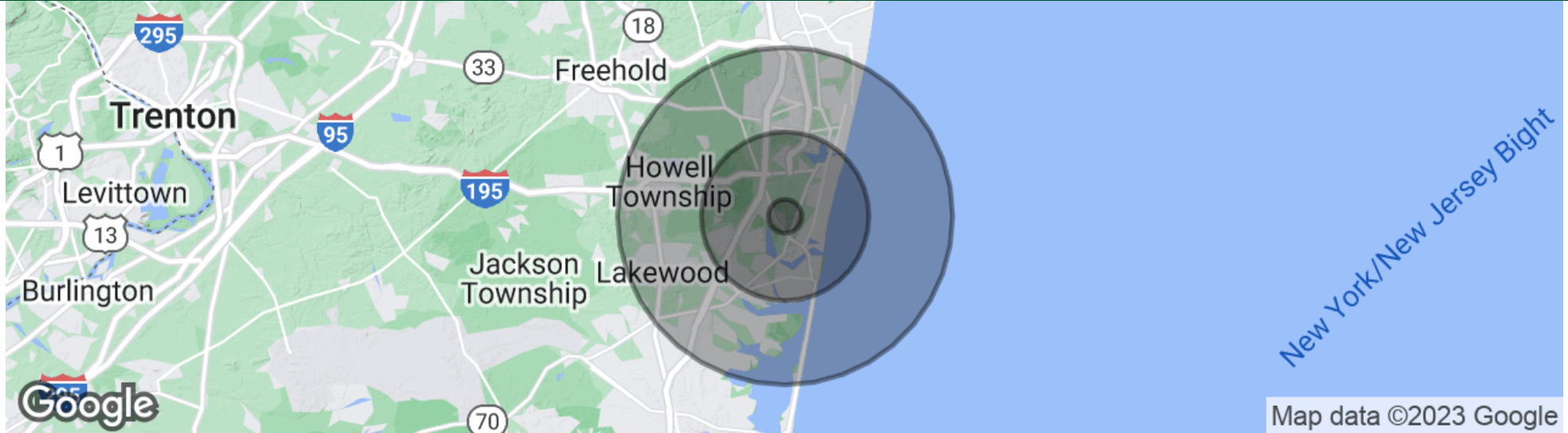


Disclaimer: ALL INFORMATION FURNISHED REGARDING PROPERTY FOR SALE, RENTAL OR FINANCING IS FROM SOURCES DEEMED RELIABLE, BUT NO WARRANTY OR REPRESENTATION IS MADE AS TO THE ACCURACY THEREOF AND SAME IS SUBMITTED SUBJECT TO ERRORS, OMISSIONS, CHANGES OF PRICE, RENTAL OR OTHER CONDITIONS, PRIOR SALE, LEASE OR FINANCING OR WITHDRAWAL WITHOUT NOTICE.

FOR LEASE | OFFICE

1913 ATLANTIC AVENUE

1913 Atlantic Avenue | Wall, NJ 08736



POPULATION

	1 MILE	5 MILES	10 MILES
Total population	2,799	137,752	428,026
Median age	46.9	43.3	40.5
Median age (Male)	44.4	42.1	38.9
Median age (Female)	47.5	44.4	41.6

HOUSEHOLDS & INCOME

	1 MILE	5 MILES	10 MILES
Total households	1,123	55,317	166,869
# of persons per HH	2.5	2.5	2.6
Average HH income	\$145,883	\$100,429	\$84,778
Average house value	\$523,215	\$466,885	\$416,106

* Demographic data derived from 2020 ACS - US Census

FOR MORE INFORMATION, PLEASE CONTACT:

Douglas Sitar | P: 732.623.2135 | C: 732.859.2144 | dsitar@sitarcompany.com
Robert JanTausch | P: 732.623.5615 | C: 908.513.5350 | jantausch@sitarcompany.com

1481 Oak Tree Road
Iselin, NJ 08830
T: 732.283.9000 | F: 732.283.3103
www.sitarcompany.com



Disclaimer: ALL INFORMATION FURNISHED REGARDING PROPERTY FOR SALE, RENTAL OR FINANCING IS FROM SOURCES DEEMED RELIABLE, BUT NO WARRANTY OR REPRESENTATION IS MADE AS TO THE ACCURACY THEREOF AND SAME IS SUBMITTED SUBJECT TO ERRORS, OMISSIONS, CHANGES OF PRICE, RENTAL OR OTHER CONDITIONS, PRIOR SALE, LEASE OR FINANCING OR WITHDRAWAL WITHOUT NOTICE.

FOR LEASE | OFFICE

1913 ATLANTIC AVENUE

1913 Atlantic Avenue | Wall, NJ 08736



Commercial Brokerage Leasing and Sales

Sitar Realty Company TCN Worldwide is a leader in the commercial brokerage industry of New Jersey. We are full-service brokerage firm and the largest remaining regional independently owned commercial brokerage firm in the state.

Property Management Services

Twin Brook Management, LLC is widely respected in the property management industry and can handle all aspects of property management. We offer full service management or a more limited management approach depending on the client's needs.

Property Tax Consulting

Our real estate tax team can provide an analysis of your property's taxes to determine if you are over-assessed and based on the results of our analysis we can reduce your property tax burden.

Rent Receiver Services

Banks, law firms and courts rely on our company to preserve property values and stabilize properties that are in the process of foreclosure. Our hands-on approach, along with the latest technology allows our clients to feel comfortable and informed throughout the entire process.

Award-Winning Research

In today's real estate market, timely, accurate information can provide a competitive edge that our clients need to succeed. Our database allows us to access information pertaining to over 300 million square feet of office and industrial space and is updated continuously.

Consulting and Advisory Services

Our services range from multivariate financial analysis to interstate site selection. We can help to maximize your company's profits while your focus on your company's core business.

Development

Our development division has been responsible for the development of hundreds of millions of dollars of properties throughout New Jersey. Our firm is known for our high quality projects that are architecturally significant. Due to our years of experience, we can assist you at any level in the development process.

FOR MORE INFORMATION, PLEASE CONTACT:

Douglas Sitar | P: 732.623.2135 | C: 732.859.2144 | dsitar@sitarcompany.com
Robert JanTausch | P: 732.623.5615 | C: 908.513.5350 | jantausch@sitarcompany.com

1481 Oak Tree Road
Iselin, NJ 08830
T: 732.283.9000 | F: 732.283.3103
www.sitarcompany.com

