



# 1513 E FRANCIS AVE AUTOMOTIVE SHOP FOR LEASE

1513 E FRANCIS AVE  
SPOKANE, WA 99217

---

**Guy D. Byrd**

Designated Broker

O: 509.953.5109

[guy.byrd@svn.com](mailto:guy.byrd@svn.com)

**McKinnon Smith**

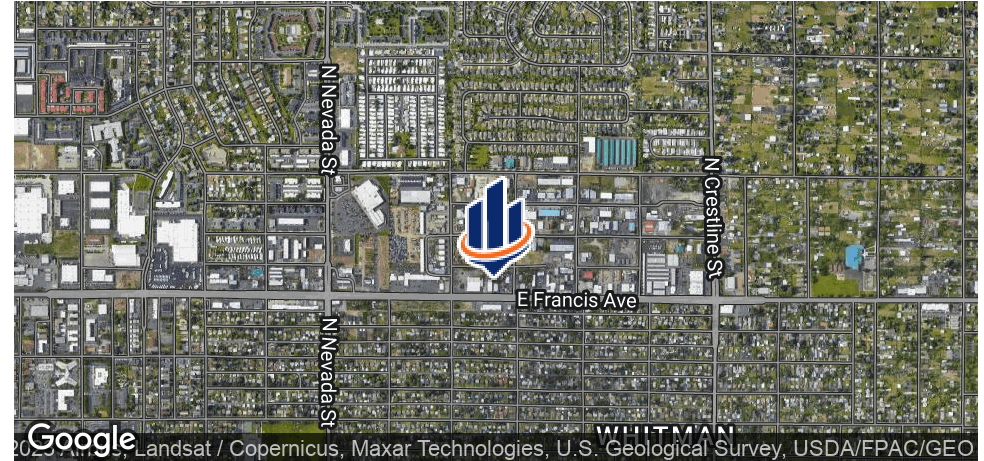
Associate Advisor

O: 509.530.8509

[mack.smith@svn.com](mailto:mack.smith@svn.com)



# 1513 E. Francis - Property Summary



## OFFERING SUMMARY

Lease Rate:	\$2,500/MO/NNN
Building Size:	3,200 SF
Lot Size:	.31 Acres 13,503 SF +/-
Zoning:	GC-70
Market:	North Spokane
RE Taxes 2020	\$2,261.04

## PROPERTY OVERVIEW

Former Auto Glass shop for lease  
Available immediately

## PROPERTY HIGHLIGHTS

- Reception area with 2 offices
- Pole sign on site with paved lot
- Metal Building with two automotive bays
- Two 12" overhead doors
- 14' to 16' clear inside shop area
- Structural storage above the office area.



1513 E. Francis



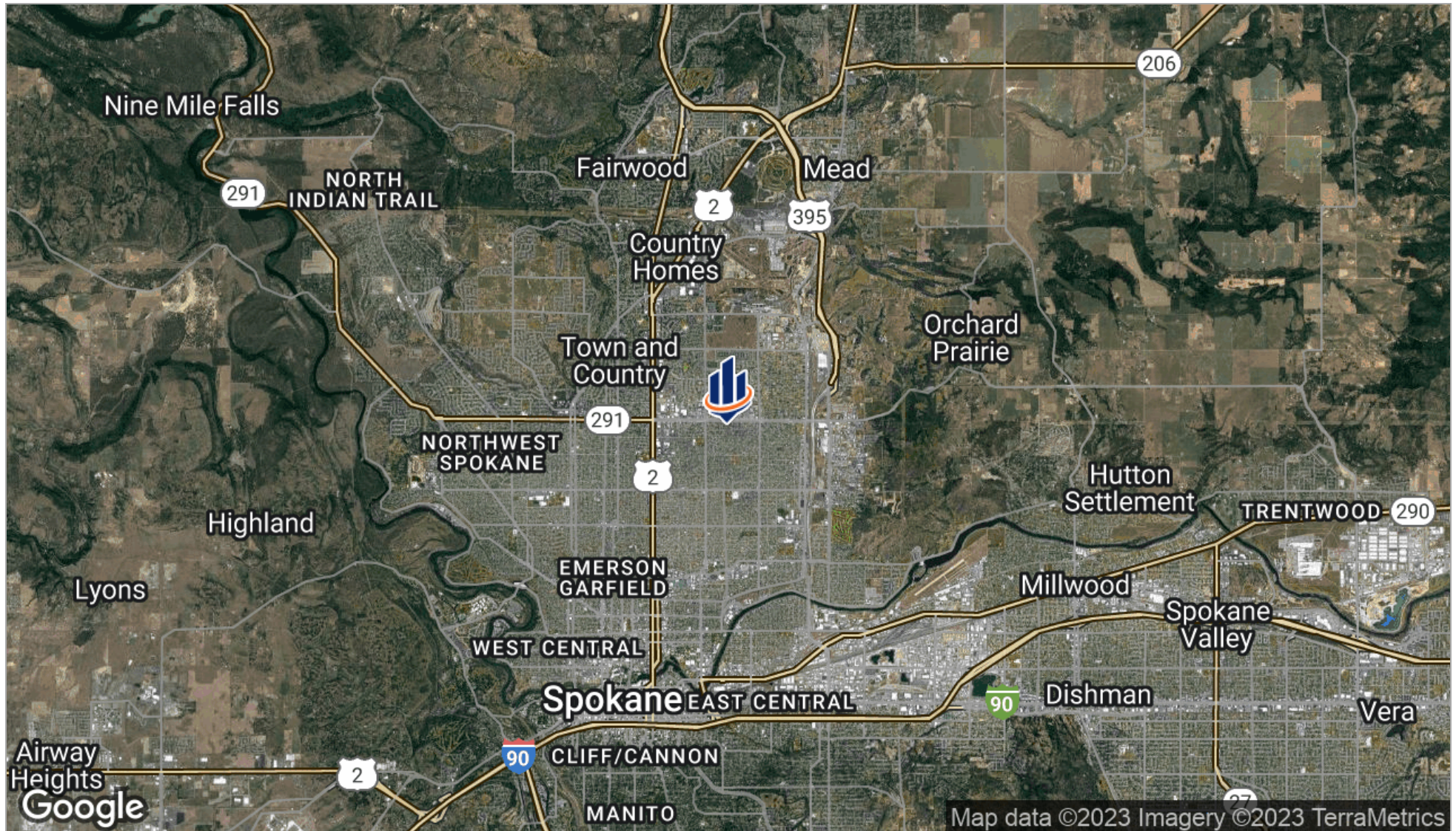


# 1513 E. Francis



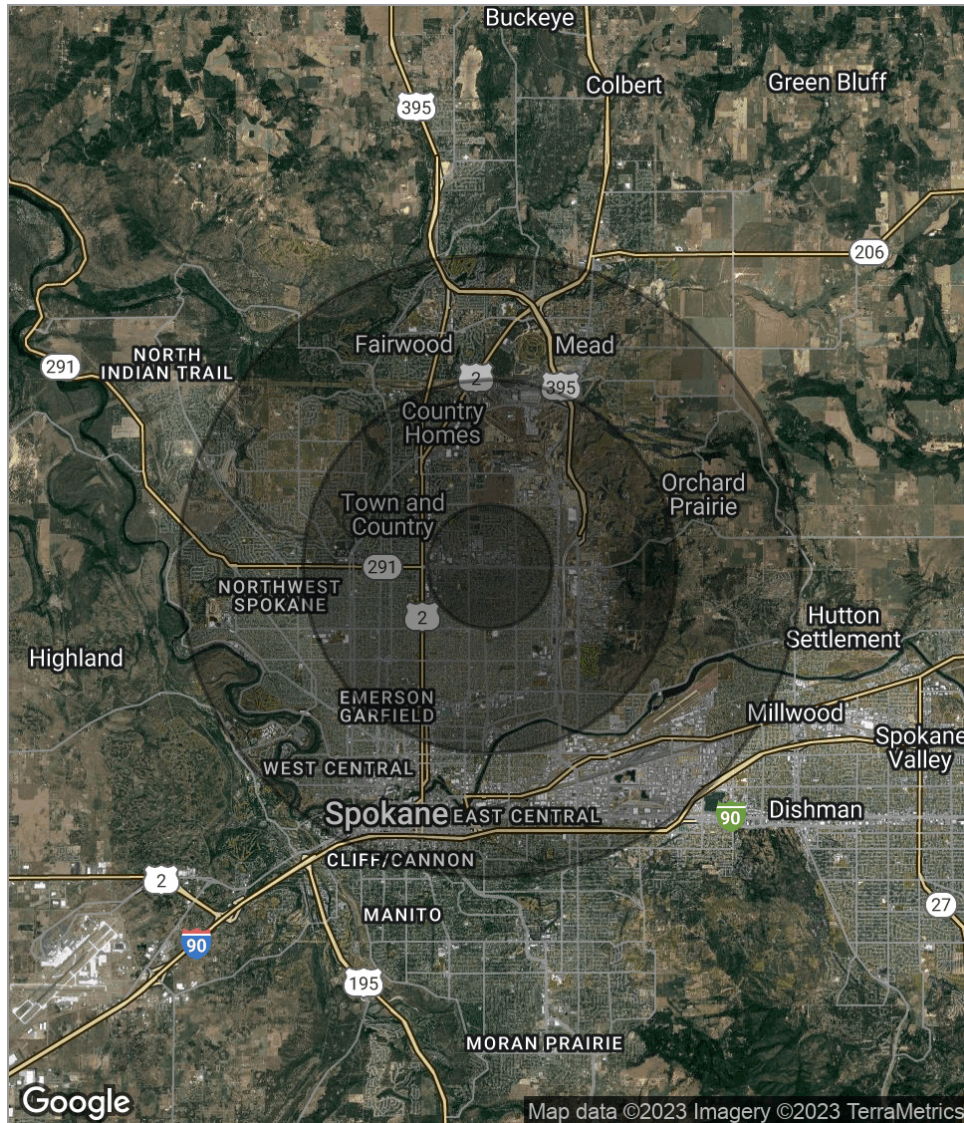


# 1513 E. Francis - Location Map





# 1513 E. Francis - Demographics Map



POPULATION	1 MILE	3 MILES	5 MILES
Total population	13,445	103,213	205,594
Median age	33.5	32.0	33.4
Median age [Male]	31.4	31.2	32.6
Median age [Female]	35.3	33.2	34.2
HOUSEHOLDS & INCOME	1 MILE	3 MILES	5 MILES
Total households	5,725	43,827	85,373
# of persons per HH	2.3	2.4	2.4
Average HH income	\$39,823	\$41,874	\$46,690
Average house value	\$151,331	\$141,686	\$161,318

\* Demographic data derived from 2020 ACS - US Census