

Strike Marine Salvage Sales, Inc.

FORT LAUDERDALE, FL



OFFERING MEMORANDUM

KW COMMERCIAL
2424 N Federal Highway,
Suite 150
Boca Raton, FL 33431

PRESENTED BY:

RICK ROUGHEN
Broker Associate
O: 954.298.7703
rick@roughen.net

CONFIDENTIALITY & DISCLAIMER

FORT LAUDERDALE, FL

All materials and information received or derived from KW Commercial its directors, officers, agents, advisors, affiliates and/or any third party sources are provided without representation or warranty as to completeness, veracity, or accuracy, condition of the property, compliance or lack of compliance with applicable governmental requirements, developability or suitability, financial performance of the property, projected financial performance of the property for any party's intended use or any and all other matters.

Neither KW Commercial its directors, officers, agents, advisors, or affiliates makes any representation or warranty, express or implied, as to accuracy or completeness of the materials or information provided, derived, or received. Materials and information from any source, whether written or verbal, that may be furnished for review are not a substitute for a party's active conduct of its own due diligence to determine these and other matters of significance to such party. KW Commercial will not investigate or verify any such matters or conduct due diligence for a party unless otherwise agreed in writing.

EACH PARTY SHALL CONDUCT ITS OWN INDEPENDENT INVESTIGATION AND DUE DILIGENCE.

Any party contemplating or under contract or in escrow for a transaction is urged to verify all information and to conduct their own inspections and investigations including through appropriate third party independent professionals selected by such party. All financial data should be verified by the party including by obtaining and reading applicable documents and reports and consulting appropriate independent professionals. KW Commercial makes no warranties and/or representations regarding the veracity, completeness, or relevance of any financial data or assumptions. KW Commercial does not serve as a financial advisor to any party regarding any proposed transaction.

All data and assumptions regarding financial performance, including that used for financial modeling purposes, may differ from actual data or performance. Any estimates of market rents and/or projected rents that may be provided to a party do not necessarily mean that rents can be established at or increased to that level. Parties must evaluate any applicable contractual and governmental limitations as well as market conditions, vacancy factors and other issues in order to determine rents from or for the property. Legal questions should be discussed by the party with an attorney. Tax questions should be discussed by the party with a certified public accountant or tax attorney. Title questions should be discussed by the party with a title officer or attorney. Questions regarding the condition of the property and whether the property complies with applicable governmental requirements should be discussed by the party with appropriate engineers, architects, contractors, other consultants and governmental agencies. All properties and services are marketed by KELLER WILLIAMS REALTY SERVICES in compliance with all applicable fair housing and equal opportunity laws.

PRESENTED BY:

KW COMMERCIAL
2424 N Federal Highway,
Suite 150
Boca Raton, FL 33431

RICK ROUGHEN
Broker Associate
O: 954.298.7703
rick@roughen.net

We obtained the information above from sources we believe to be reliable. However, we have not verified its accuracy and make no guarantee, warranty or representation about it. It is submitted subject to the possibility of errors, omissions, change of price, rental or other conditions, prior sale, lease or financing, or withdrawal without notice. We include projections, opinions, assumptions or estimates for example only, and they may not represent current or future performance of the property. You and your tax and legal advisors should conduct your own investigation of the property and transaction.



STRIKE MARINE SALVAGE SALES, INC.

BUSINESS INFORMATION

1

EXECUTIVE SUMMARY

BUSINESS DESCRIPTION

WAREHOUSE PHOTOS

EQUIPMENT & PARTS PHOTOS

EQUIPMENT & PARTS PHOTOS

EQUIPMENT & PARTS PHOTOS

EQUIPMENT & PARTS PHOTOS

EXECUTIVE SUMMARY



OFFERING SUMMARY

SALE PRICE: \$10,000,000

BUILDING SIZE: 43,800 SF

PRICE / SF: \$228.31

This is a successful business that sells high-end, mostly second-hand, yacht parts and equipment to an affluent base of captains, shipyards and yacht owners all over the world. The massive warehouse buildings where these materials are stored are located in Fort Lauderdale, just off the famous Marina Mile Boulevard at the very epicenter of the 'Yachting Capital of the World". The buildings are leased from a third party.

BUSINESS HIGHLIGHTS

BUSINESS DESCRIPTION

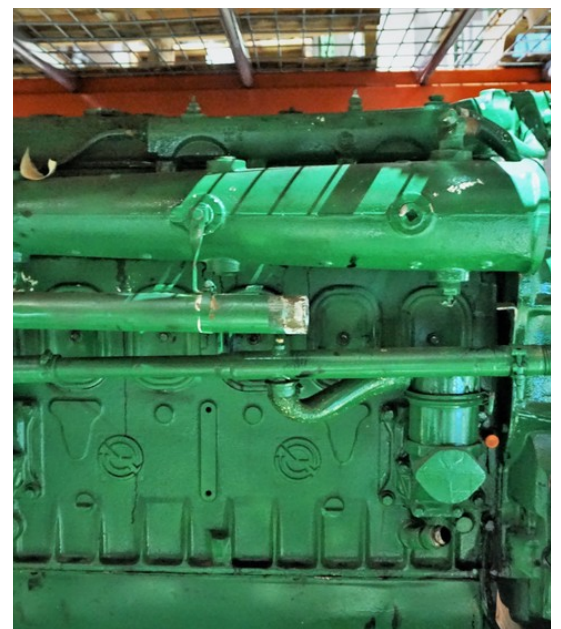


OVERVIEW

Although a growing number of consumers are visiting the facility and shopping in person as they peruse the massive isles, most business conducted at Strike Marine is accomplished through on-line venues like eBay and Craigslist. The incredible range of high-end parts and equipment on display are maintained and categorized in meticulous fashion by an outstanding and well-trained staff.

The big opportunity for a serious Buyer is to continue that process and to input the remaining inventory of items online. The endless flow of additional parts and equipment into this business is the reason for its exponential growth. A massive niche has been identified and filled with this amazing company, and the next owners will find managing explosive growth to be its biggest challenge!

EQUIPMENT AND PARTS PHOTOS



EQUIPMENT & PARTS PHOTOS



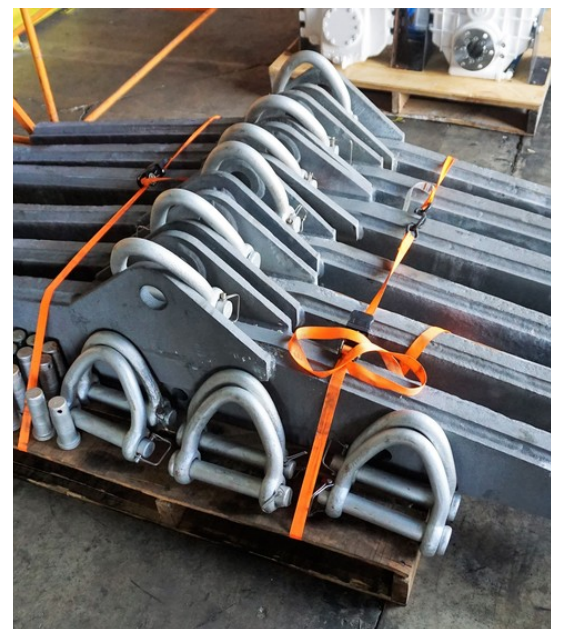
EQUIPMENT & PARTS PHOTOS



EQUIPMENT & PARTS PHOTOS



EQUIPMENT & PARTS PHOTOS



STRIKE MARINE SALVAGE SALES, INC.

LOCATION INFORMATION

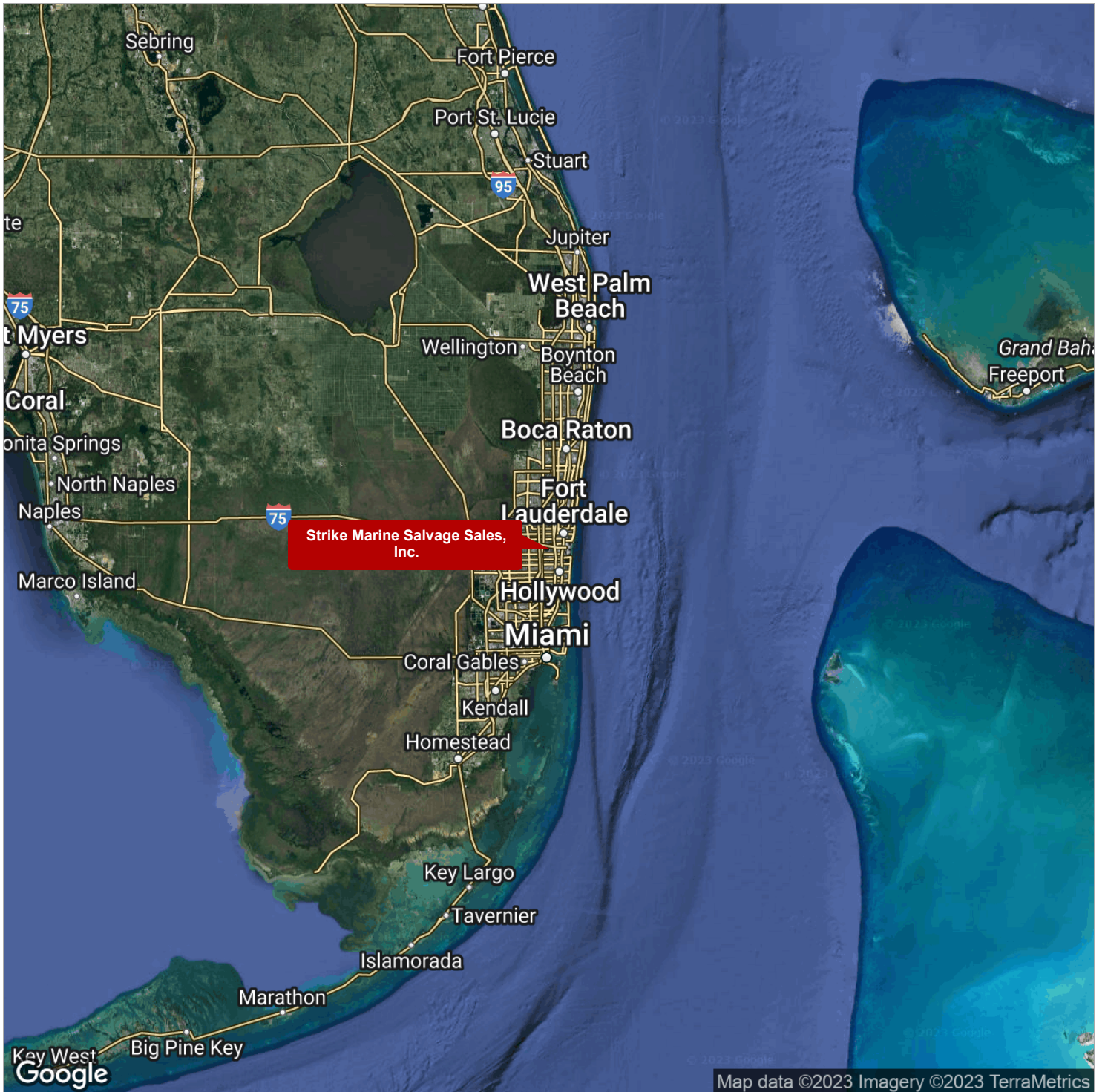
2

REGIONAL SATELLITE VIEW

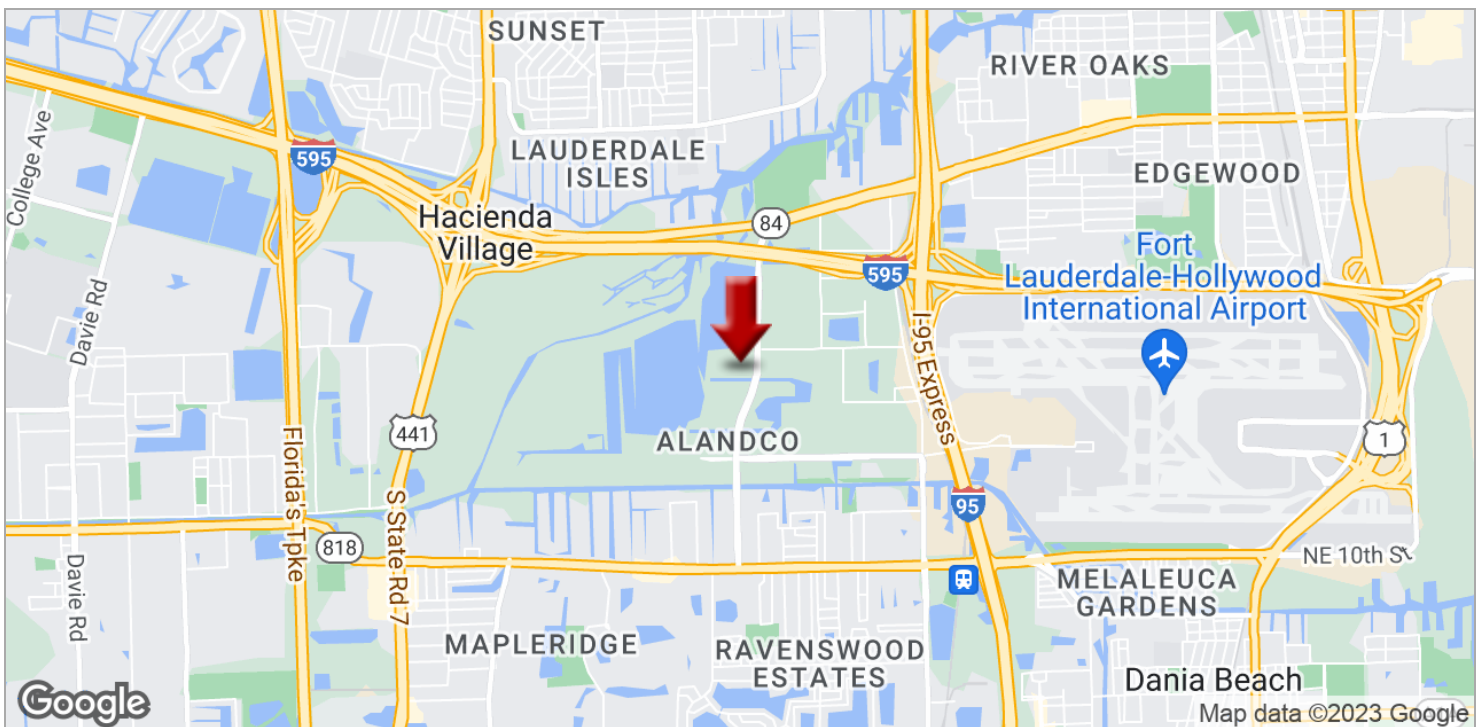
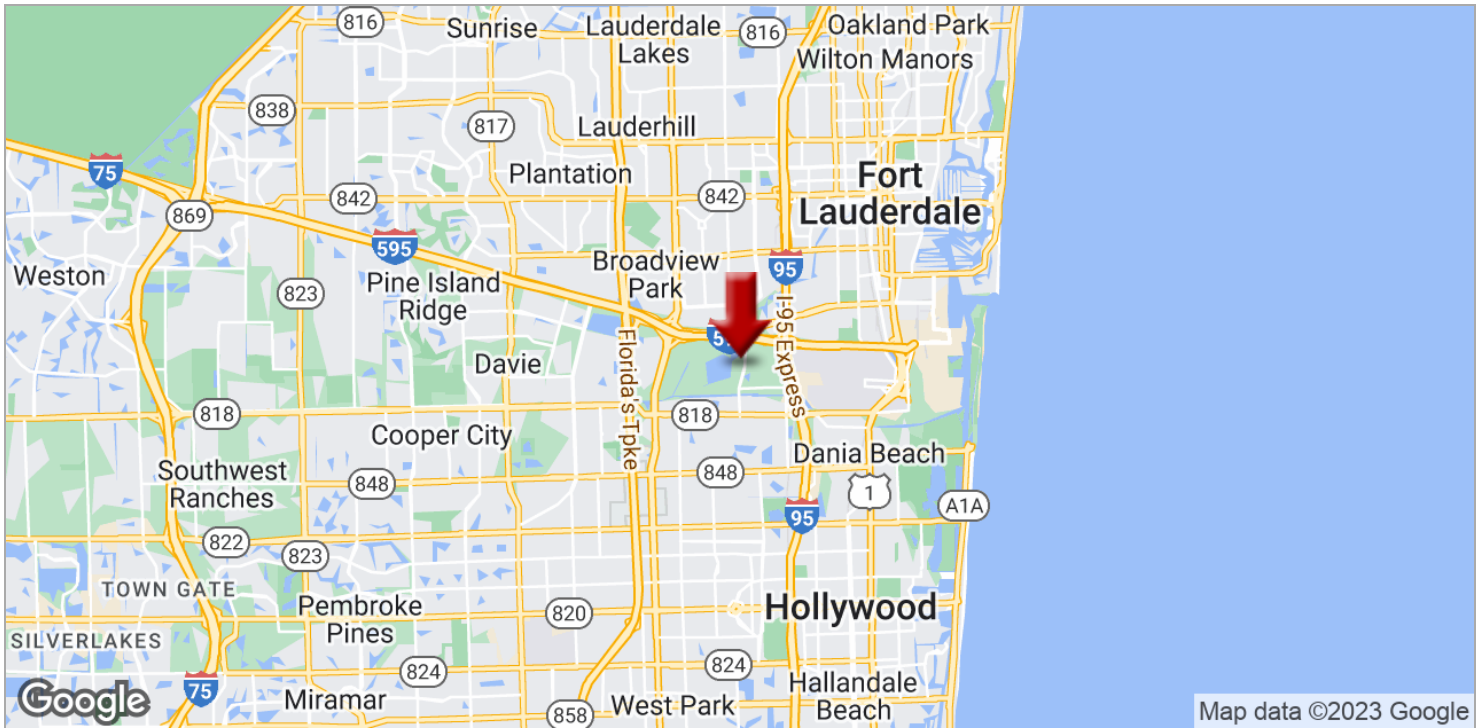
LOCATION MAPS

AERIAL MAP

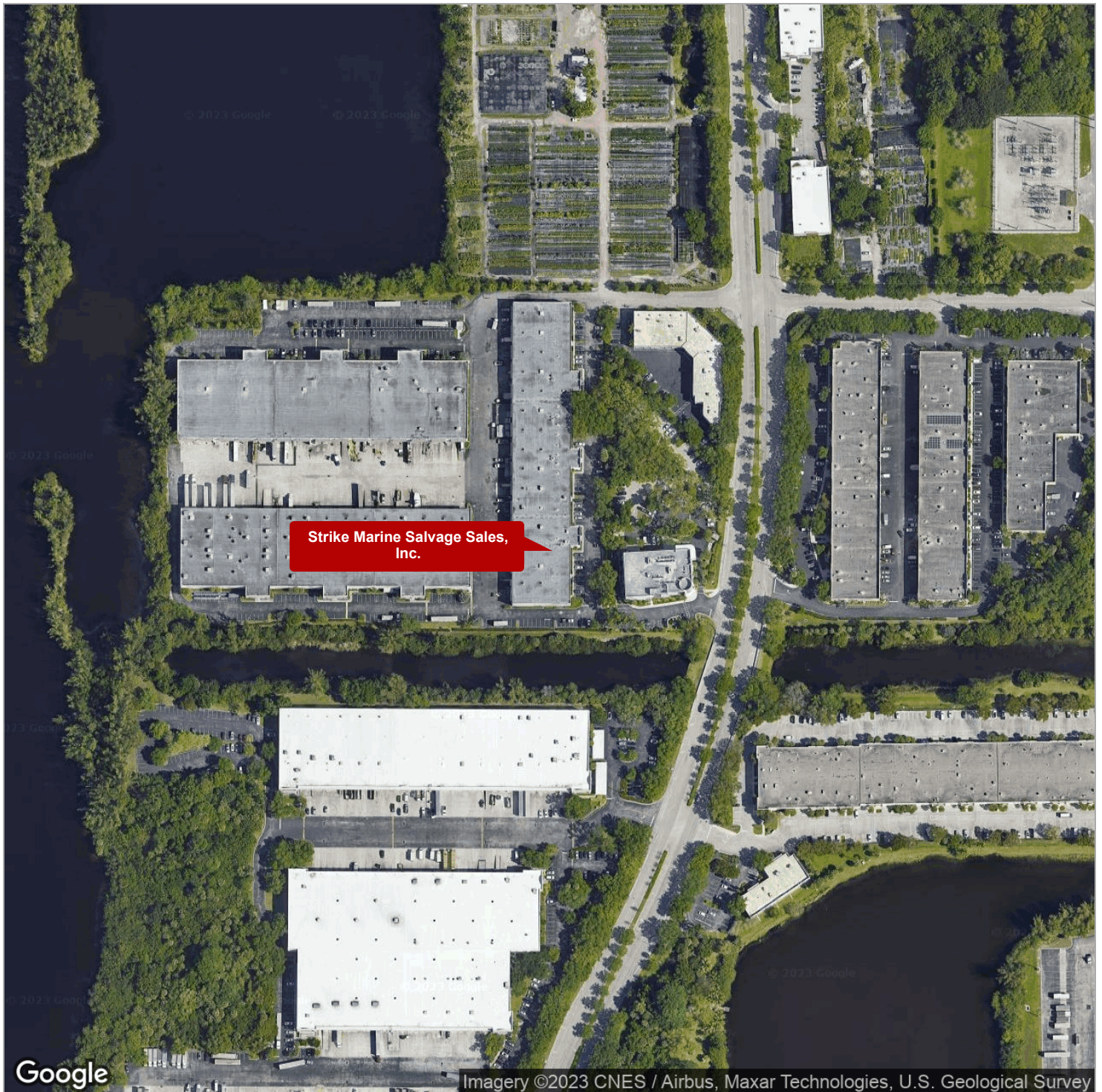
REGIONAL SATELLITE VIEW



LOCATION MAPS



AERIAL MAP



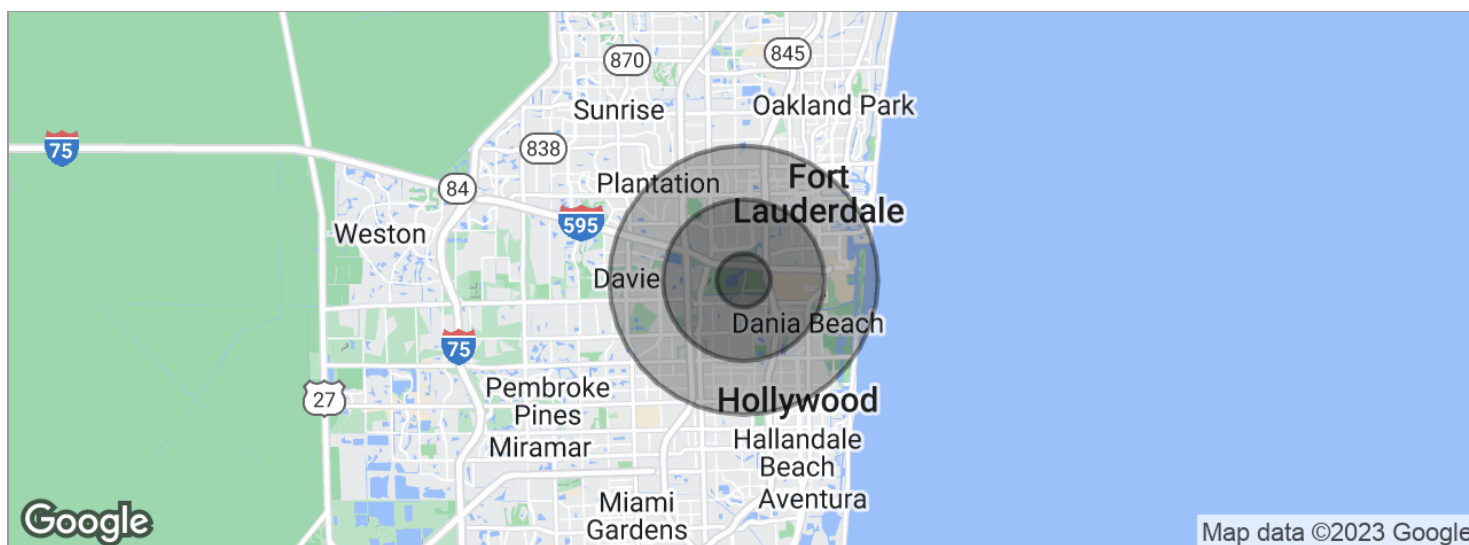
STRIKE MARINE SALVAGE SALES, INC.

DEMOGRAPHICS

3

DEMOGRAPHICS MAP

DEMOGRAPHICS MAP



POPULATION	1 MILE	3 MILES	5 MILES
Total population	5,948	95,130	308,913
Median age	37.6	38.6	38.4
Median age (male)	38.2	36.8	37.3
Median age (Female)	37.2	39.5	39.0
HOUSEHOLDS & INCOME	1 MILE	3 MILES	5 MILES
Total households	2,440	36,411	120,552
# of persons per HH	2.4	2.6	2.6
Average HH income	\$65,615	\$66,394	\$63,118
Average house value	\$267,660	\$318,282	\$299,516

* Demographic data derived from 2020 ACS - US Census