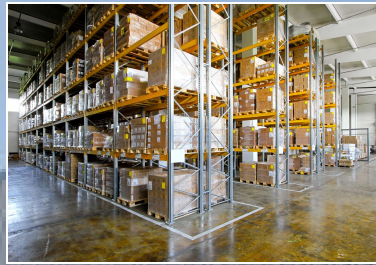


PROPERTY OVERVIEW

WINDSOR CORPORATE PARK

2

2603 NORTH ROLLING ROAD , BALTIMORE, MD 21244



Building Information

- Easy access to I-695 via Security Boulevard or Windsor Mill Road
- Located in the Woodlawn Enterprise Zone
- One-story brick construction
- 20' & 22' clear ceiling heights
- Docks and drive-ins
- Comcast service available
- 120/208 volt, 3-phase, 4-wire service
- Gas heat/public utilities
- Sprinklered
- Well-lit parking with 425 spaces
- Bus stop located at park entrance
- Baltimore County, ML-IM zoning: manufacturing light, industry major
- Close proximity to restaurants, post office, retail and business services



Surrounding Amenities

- Bonsai Japanese Express Hibachi and Sushi
- Gracefully Coffee Roasters
- Subway
- Walgreens
- Wawa
- Wendy's
- 7-Eleven



Site Plan

Windsor Corporate Park 2

2603 North Rolling Road

Industrial

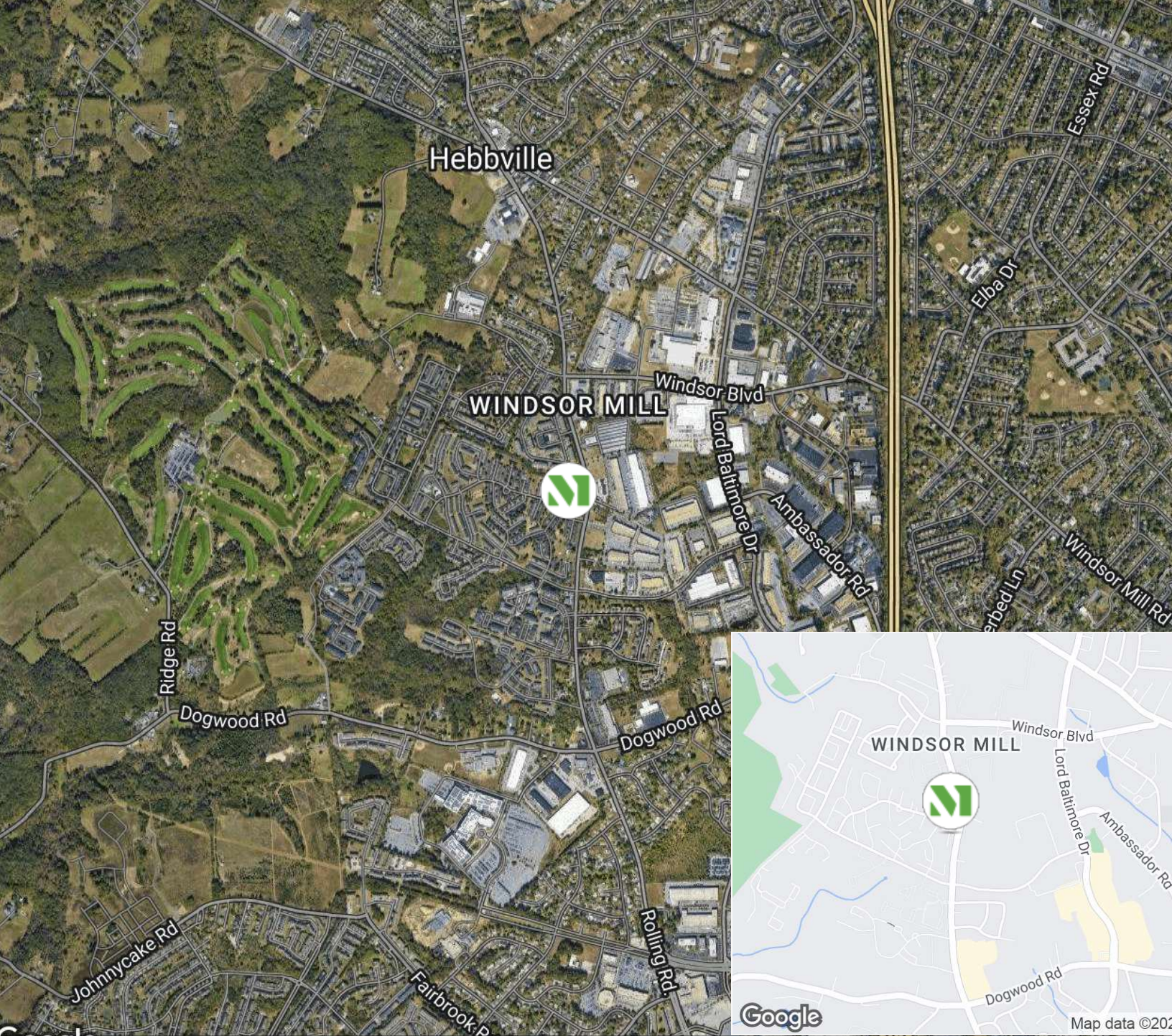
36,450 SF



“Merritt has been really great as an organization. Any time we have an issue that comes up or something that we need help with, the service is immediate, and basically everything that we have ever needed since we have been here has been handled in an efficient manner and we couldn’t be any happier.”

ADAM WEINRUB
VICE PRESIDENT
VYTEX WINDOWS





CREATING HOMES FOR BUSINESSES

Established in 1967, Merritt Properties is a privately held commercial real estate company offering over 21 million square feet of Class A office, flex, warehouse, industrial, retail and build-to-suit spaces throughout Maryland, Florida, North Carolina and Virginia. We design, build, lease and manage our properties for the long term with a commitment to providing the highest quality service to all of our customers.

For additional information or to schedule a tour, contact:

Whit Levering | Ashley Reimer | Lauren Lindsay

merrittproperties.com

MD: 410.298.2600 | VA: 703.858.2725 | NC: 919.526.0070 | FL: 904.515.2030

