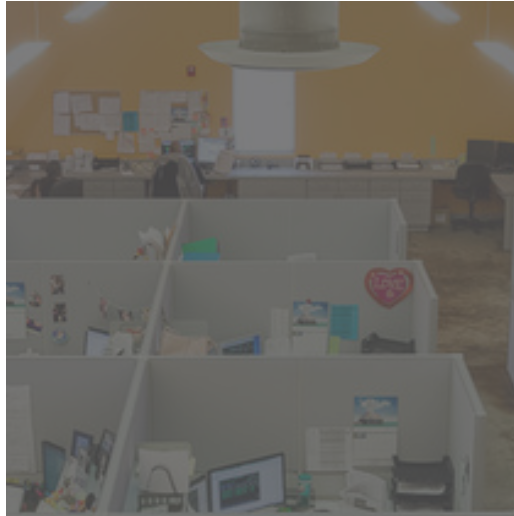


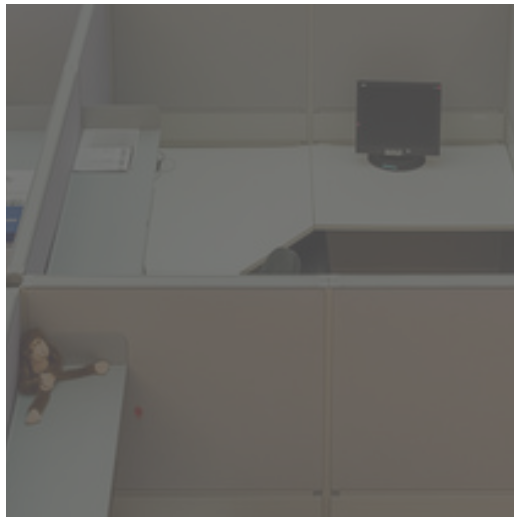
OFFICE BUILDING FOR SALE

UPSCALE CORPORATE OFFICE/LOT



2026

E TYLER
HARLINGEN, TX



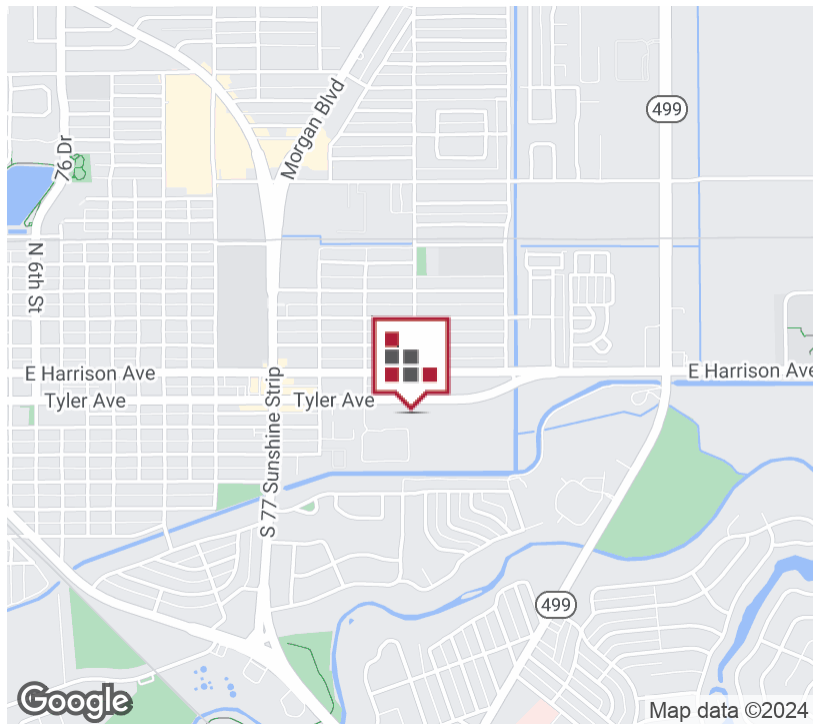
Just North of 77 Sunshine Strip on E Tyler



Commercial Real Estate in the Rio Grande Valley

FOR SALE UPSCALE CORPORATE OFFICE/LOT

EXECUTIVE SUMMARY



SALE PRICE

\$1,185,000

OFFERING SUMMARY

Available SF:	8,000 SF
Lot Size:	2.61 Acres
Year Built:	2005
Building Size:	7,850 SF
Zoning:	Commercial
Market:	Rio Grande Valley
Submarket:	Harlingen
Price / SF:	\$150.96

PROPERTY OVERVIEW

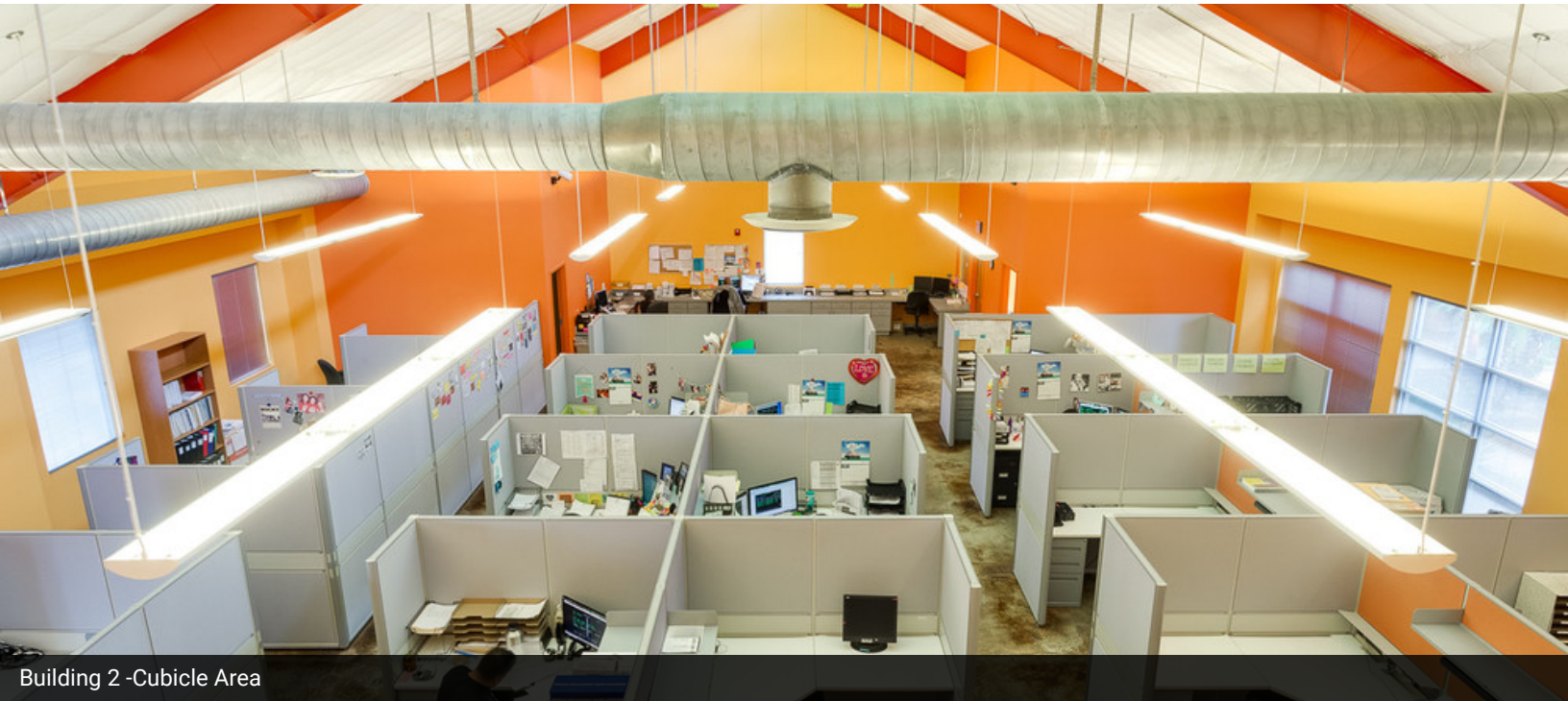
DESIGNED FOR AUSTIN IN MIND - This exquisite Office Building is ideal for a Corporate User. Single-story building with Vaulted Ceilings, containing two (2) buildings separated by indoor Courtyard and connected by Break Room opening out to Indoor Courtyard. Building 1 contains 8 Large Window Office, Large Conference Room and large open area for additional work space. Building 2 contains Reception Window, Vestibule, Manager Office, Mail Room and currently houses 26 Cubicles in Open Workspace. Stained Concrete Floors and Aluminum Exterior add to this creative building.

PROPERTY HIGHLIGHTS

- Creative/Executive Design
- Adjacent land for Parking or Additional Structure
- Unique / Well maintained Facility
- Beautifully Landscaped Courtyard

FOR SALE
UPSCALE CORPORATE OFFICE/LOT

ADDITIONAL PHOTOS



Building 2 - Cubicle Area



Aerial Image



Exterior - Close Up



CINDY HOPKINS REAL ESTATE

222 E Van Buren, Suite 617 // Harlingen, TX 78550
956.778.3255 // cindy@chopkinsrealestate.com

The information contained herein was obtained from sources deemed reliable; however, CHRE makes no guaranties, warranties or representations to the completeness or accuracy thereof. The presentation of this real estate information is subject to errors; omissions; change of price; prior sale or lease; or withdrawal without notice.

FOR SALE
UPSCALE CORPORATE OFFICE/LOT

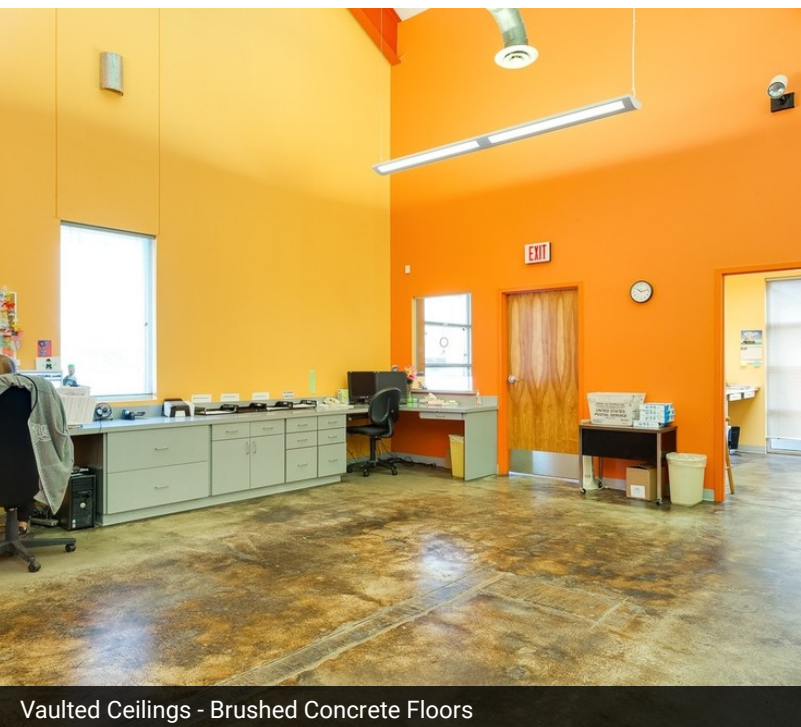
ADDITIONAL PHOTOS



Beautiful Interior Courtyard



Interior Courtyard



Vaulted Ceilings - Brushed Concrete Floors

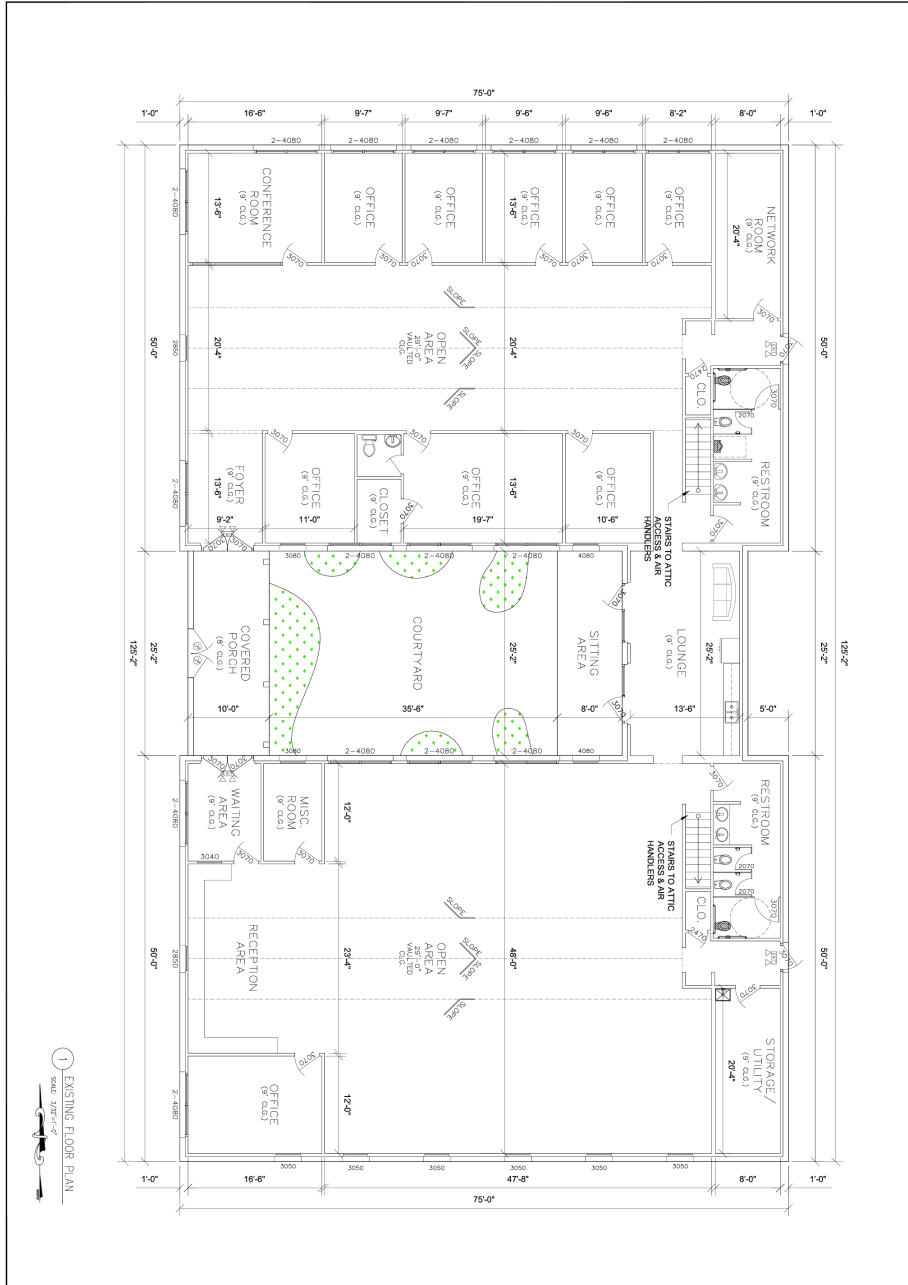


Break Area Connecting Buildings

FOR SALE

UPSCALE CORPORATE OFFICE/LOT

FLOOR PLANS



**2026 E TYLER RD
HARLINGEN, TX
78550**

MAIN BUILDING
7,880 SQ. FT.
COVERED PORCH
627 SQ. FT.
MISC. 0 SQ. FT.
TOTAL AREA
8,507 SQ. FT.

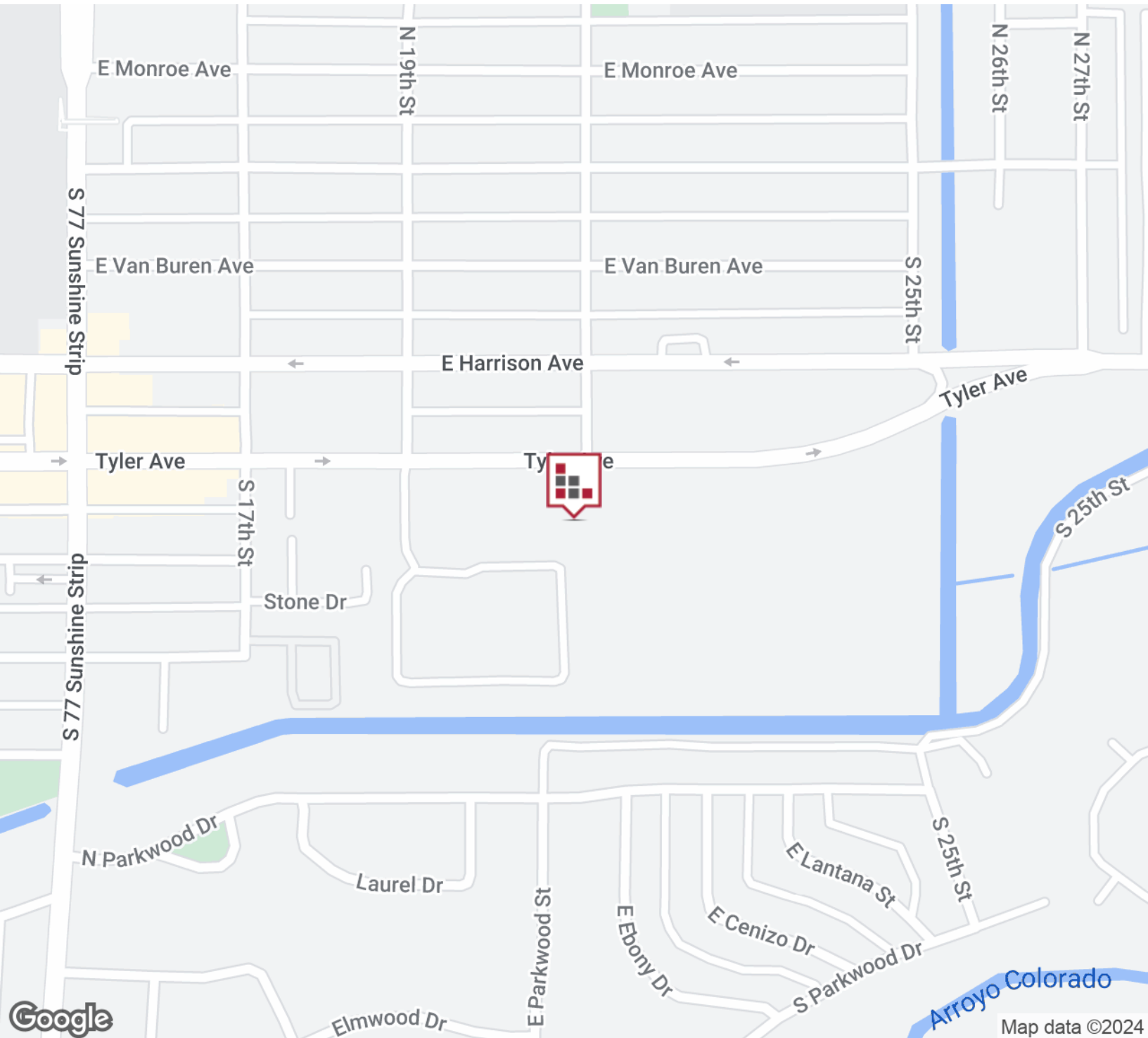
**INNOVATIVE
DESIGN SERVICES**
• 3D RENDERING
• 4D CONSTRUCTION
CALL 956.778.3255



FOR SALE

UPSCALE CORPORATE OFFICE/LOT

LOCATION MAPS



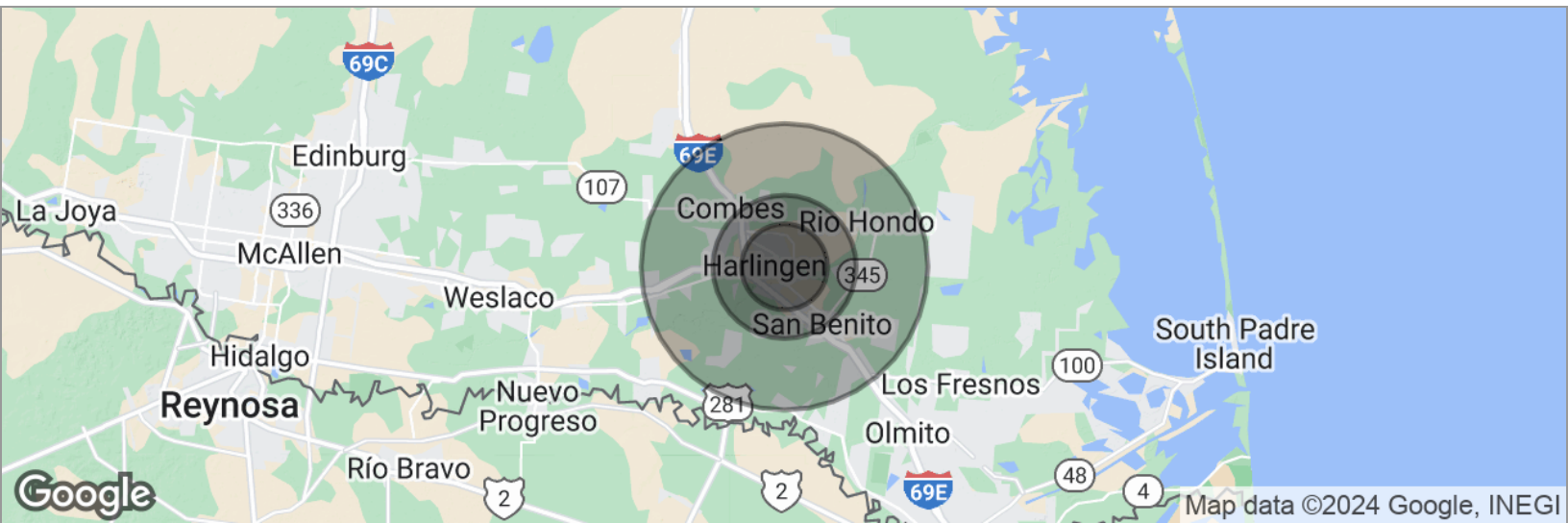
CINDY HOPKINS REAL ESTATE

222 E Van Buren, Suite 617 // Harlingen, TX 78550
956.778.3255 // cindy@chopkinsrealestate.com

The information contained herein was obtained from sources deemed reliable; however, CHRE makes no guaranties, warranties or representations to the completeness or accuracy thereof. The presentation of this real estate information is subject to errors; omissions; change of price; prior sale or lease; or withdrawal without notice.

FOR SALE UPSCALE CORPORATE OFFICE/LOT

DEMOGRAPHICS MAP



POPULATION

3 MILES

5 MILES

10 MILES

Total population	50,927	85,555	141,550
Median age	32.7	33.2	33.2
Median age (Male)	31.8	31.9	31.7
Median age (Female)	34.1	34.8	35.0

HOUSEHOLDS & INCOME

3 MILES

5 MILES

10 MILES

Total households	16,830	27,855	44,399
# of persons per HH	3.0	3.1	3.2
Average HH income	\$46,324	\$48,175	\$48,514
Average house value	\$79,933	\$84,822	\$85,256

ETHNICITY (%)

3 MILES

5 MILES

10 MILES

Hispanic	81.0%	80.8%	81.8%
----------	-------	-------	-------

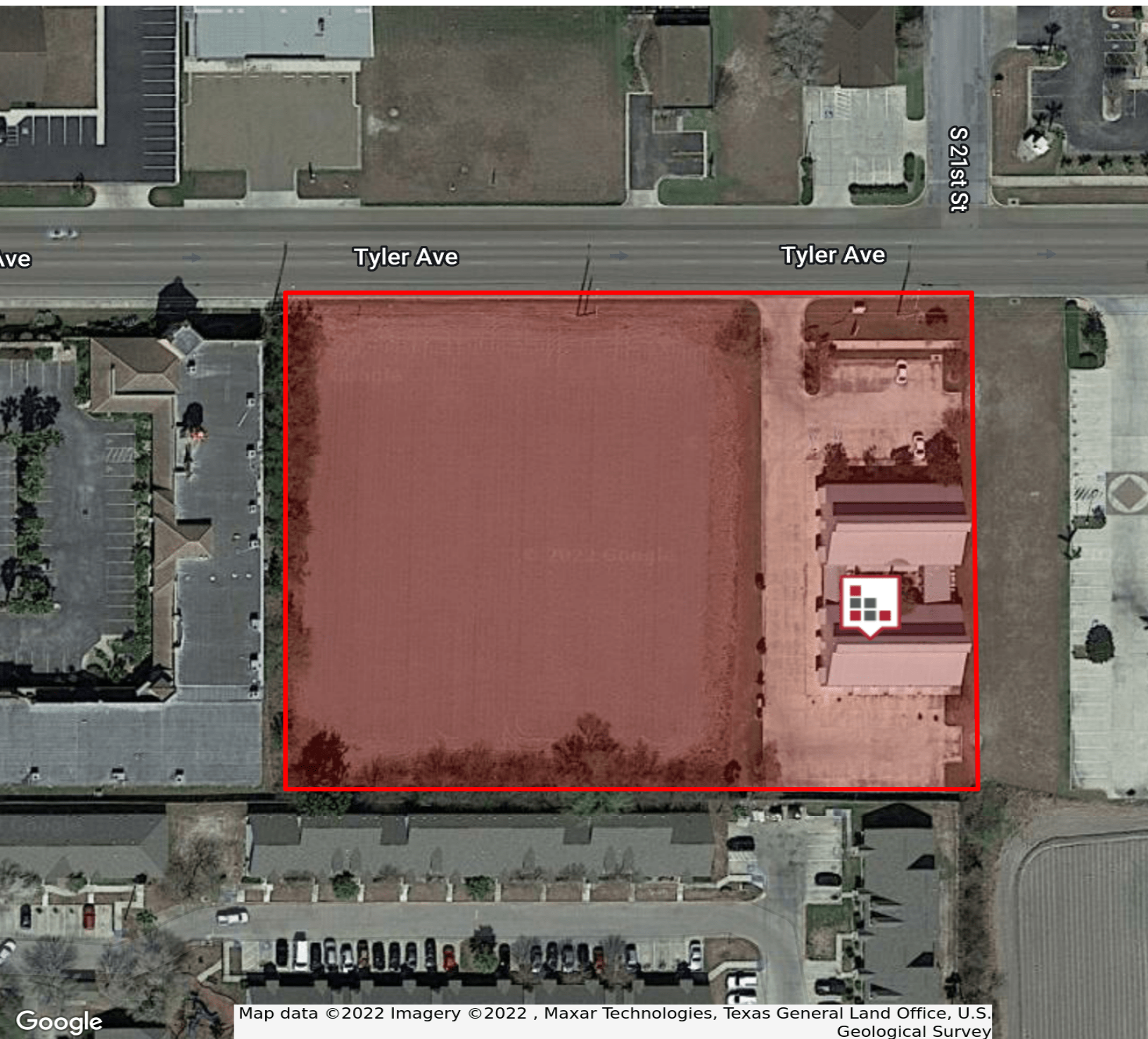
RACE (%)

White	88.1%	88.3%	88.4%
Black	1.0%	0.9%	0.7%
Asian	1.7%	1.3%	1.0%
Hawaiian	0.0%	0.0%	0.0%
American Indian	0.3%	0.3%	0.2%
Other	7.5%	7.7%	8.5%

* Demographic data derived from 2020 ACS - US Census

FOR SALE
UPSCALE CORPORATE OFFICE/LOT

AERIAL MAP



FOR SALE
UPSCALE CORPORATE OFFICE/LOT

RETAILER MAP

