

For Lease

Downtown Office

1,657 - 3,314 SF | \$25.00 SF/YR



Gallie Hall

225 S Adams St
Tallahassee, Florida 32301

Property Highlights

Property Description

Perfect location for a firm or professional business looking in the downtown market. The building offers access off Adams St directly across from City Hall and is just across the street from the Capitol Building. Public parking is available within one block where spots can be leased on a monthly basis.

OFFERING SUMMARY

Available SF	
Lease Rate	\$25.00 SF/YR (Full Service)
Building Size	15,160 SF

AVAILABLE SPACES

Space	Lease Rate	Size (SF)
-------	------------	-----------

For more information

John W. McNeill, SIOR

O: 850 224 2300 | C: 850 251 5504
jmcneill@talcor.com

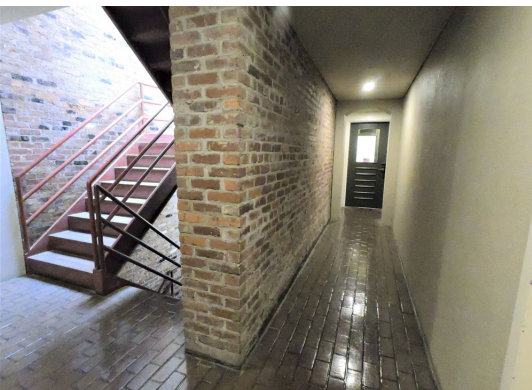
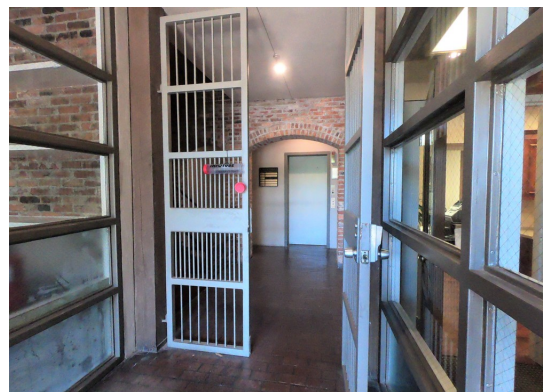


NO WARRANTY OR REPRESENTATION, EXPRESS OR IMPLIED, IS MADE AS TO THE ACCURACY OF THE INFORMATION CONTAINED HEREIN, AND THE SAME IS SUBMITTED SUBJECT TO ERRORS, OMISSIONS, CHANGE OF PRICE, RENTAL OR OTHER CONDITIONS, PRIOR SALE, LEASE OR FINANCING, OR WITHDRAWAL WITHOUT NOTICE, AND OF ANY SPECIAL LISTING CONDITIONS IMPOSED BY OUR PRINCIPALS. NO WARRANTIES OR REPRESENTATIONS ARE MADE AS TO THE CONDITION OF THE PROPERTY OR ANY HAZARDS CONTAINED THEREIN ARE ANY TO BE IMPLIED.

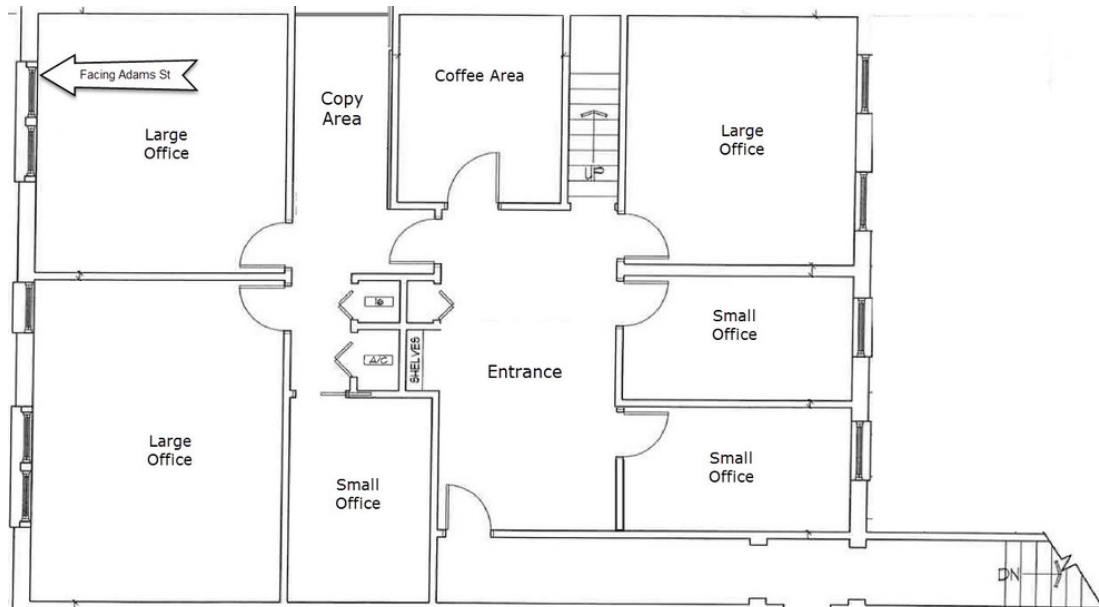
1018 Thomasville Road, Suite 200A,
Tallahassee, FL 32303
850 224 2300 tel
talcor.com



Additional Photos

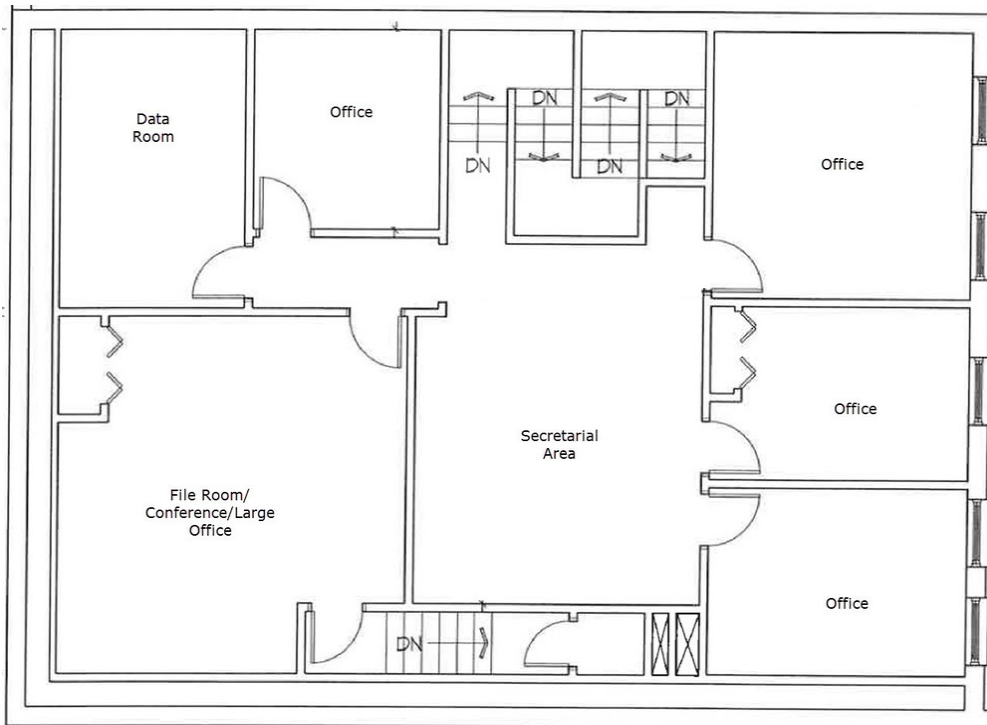


Floor Plans



1

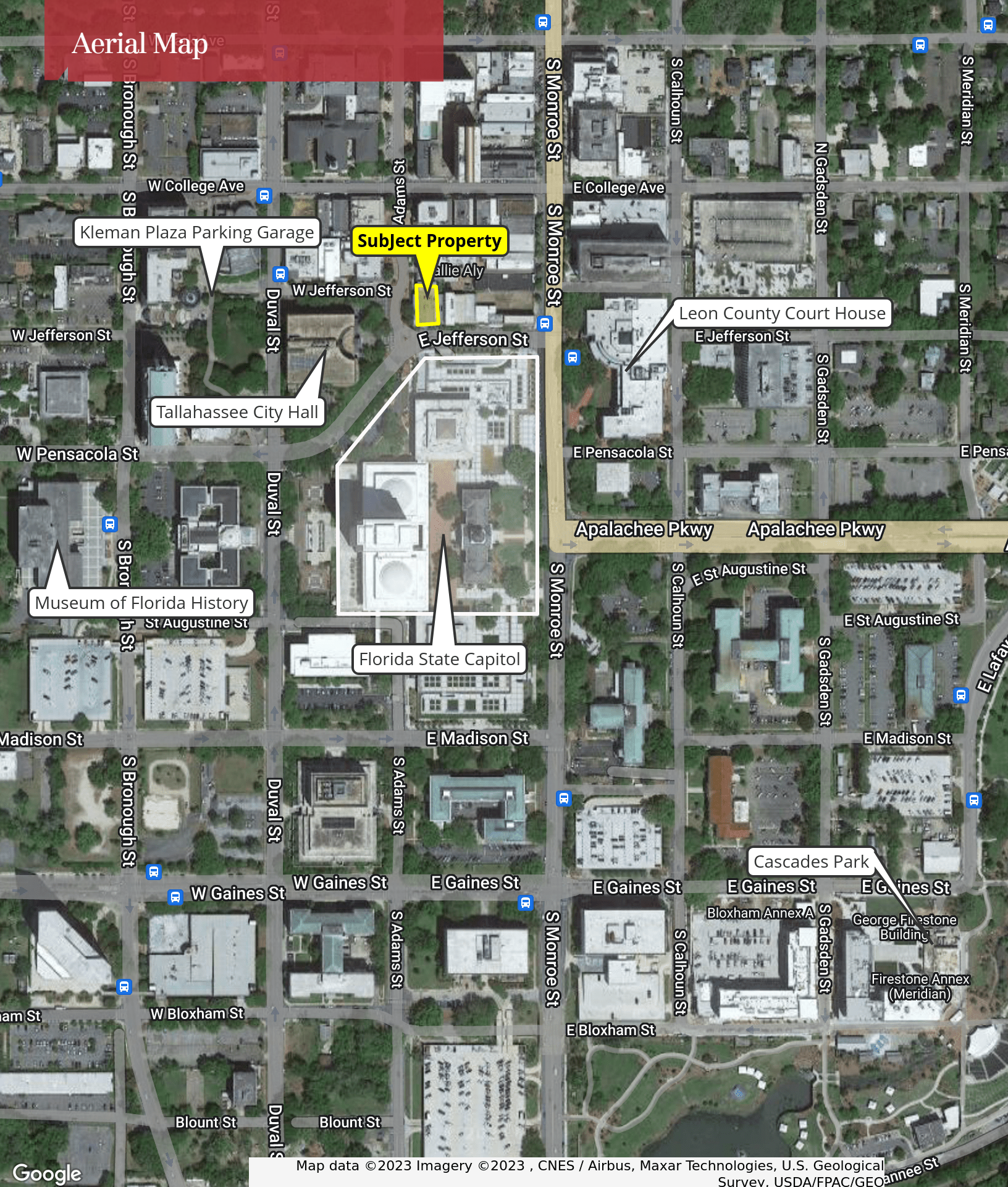
Second Floor Plan



2

Third Floor Plan

Aerial Map



Map data ©2023 Imagery ©2023 , CNES / Airbus, Maxar Technologies, U.S. Geological Survey, USDA/FPAC/GEO