

For Lease

Ground Floor Flex Space

2,300 - 9,500 SF Available

3290 N 93rd Street | Omaha, NE 68134

\$4.95 PSF (Full Service)

Property Features

- Ground floor flex/office/storage space
- Park at your door with a work space opportunity
- Existing restrooms in place
- 100% climate controlled
- Close to I-680 and West Dodge corridor

13321 California Street, Suite 105
Omaha, NE 68154
402 255 6060
nainpdodge.com

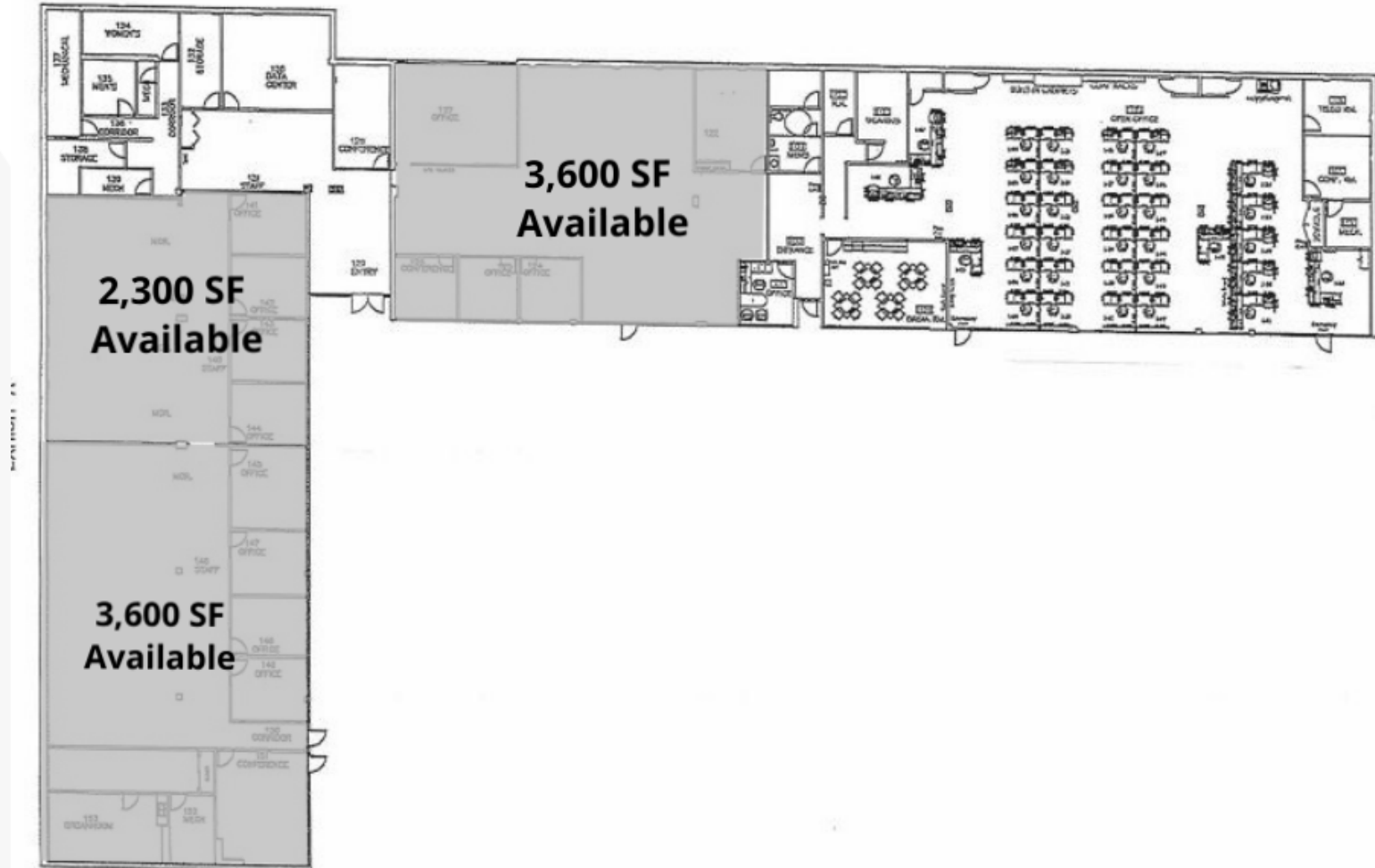
Gary Petersen

Associate

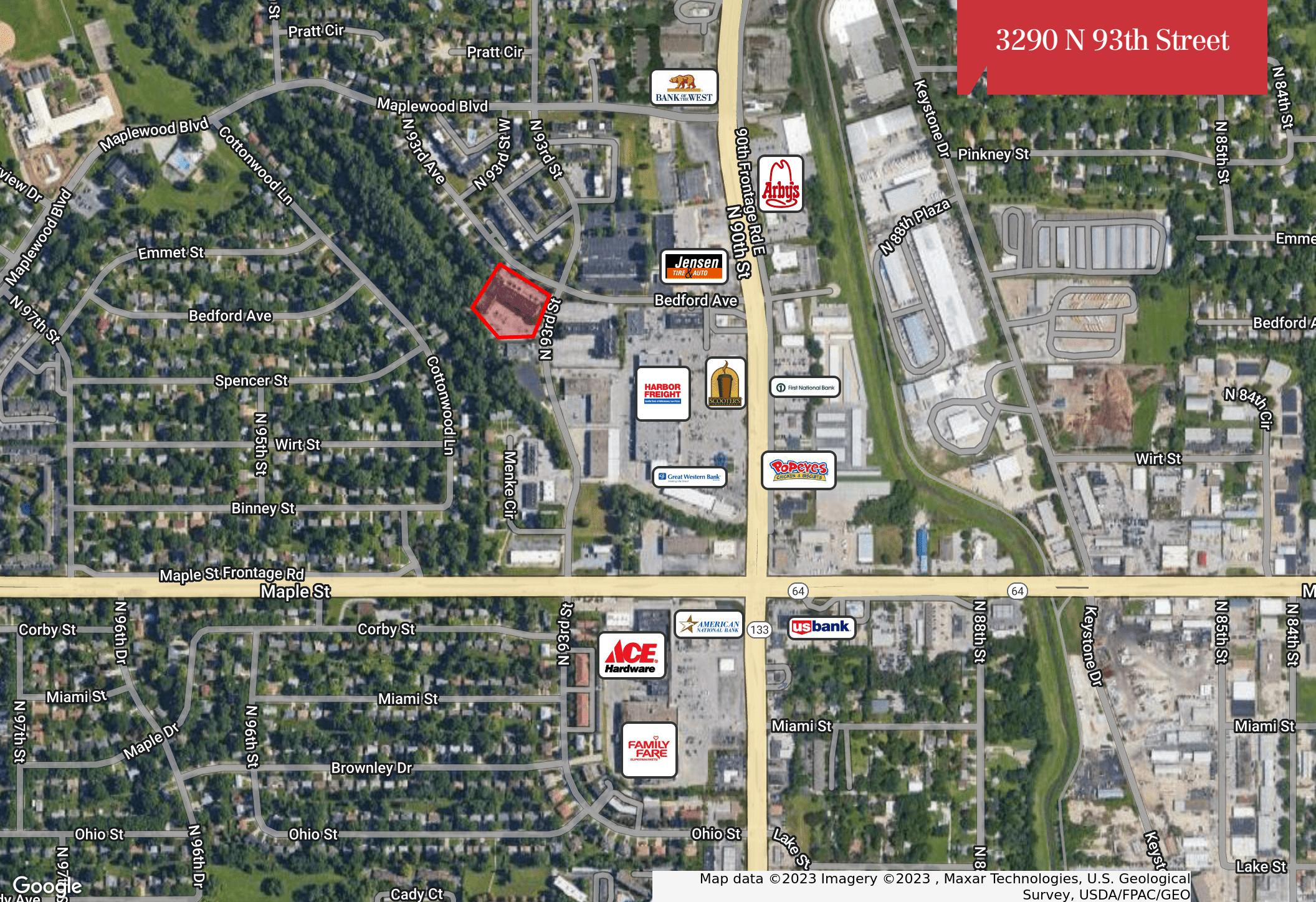
402 398 5291

gpetersen@npdodge.com

UNAVAILABLE



3290 N 93th Street



Map data ©2023 Imagery ©2023 , Maxar Technologies, U.S. Geological Survey, USDA/FPAC/GEO