

LAND FOR SALE

2.08 ACRES CA-99 HIGHWAY COMMERCIAL DEVELOPMENT LAND

Lungren Court, Kingsburg, CA 93631



OFFERING SUMMARY

SALE PRICE:	\$770,000
LOT SIZE:	2.08 Acres
ZONING:	Commercial
MARKET:	Northwest Kingsburg
SUBMARKET:	Kingsburg Commercial Service
APN:	394-042-05

PROPERTY HIGHLIGHTS

- PRICE REDUCED BY \$125,000!!
- ±2.08 Acres of Commercial Land
- Prime Land W/Nearby Sierra Street Access
- Easy Access to HWY 99 On/Off Ramps
- Optimal Visibility w/ 163,878 Cars Per Day
- Unmatched Level of Consumer Traffic and High Volume Exposure
- Situated Near Many Existing & Planned Developments
- North & South Bound Traffic Generators Near Highway 99
- Ideal for Hotel, Mini Storage, Commercial, & More!

KW COMMERCIAL
7520 N. Palm Ave #102
Fresno, CA 93711

JARED ENNIS
Executive Vice President
O: 559.705.1000
C: 559.705.1000
jared@centralcacommercial.com
CA #01945284

KEVIN LAND
Executive Managing Director
O: 559.705.1000
kevin@centralcacommercial.com
CA #01516541

We obtained the information above from sources we believe to be reliable. However, we have not verified its accuracy and make no guarantee, warranty or representation about it. It is submitted subject to the possibility of errors, omissions, change of price, rental or other conditions, prior sale, lease or financing, or withdrawal without notice. We include projections, opinions, assumptions or estimates for example only, and they may not represent current or future performance of the property. You and your tax and legal advisors should conduct your own investigation of the property and transaction.

Each Office Independently Owned and Operated CentralCaCommercial.com

LAND FOR SALE

2.08 ACRES CA-99 HIGHWAY COMMERCIAL DEVELOPMENT LAND

Lungren Court, Kingsburg, CA 93631



PROPERTY DESCRIPTION

±2.08 Acres (90,604 SF) Highway Commercial Development located just west of HWY 99. Highly visible location w/ easy highway on and off ramps. The Sierra Street exit offers many existing and planned developments, which include restaurants, retail, office and industrial. Adjacent from this property is Kindred Lakes Hospitality hotel which is currently in progress & can offer vast amount of activity.

Sierra Street is a full interchange Highway 99 overpass, a natural resting spot for travelers and commuters to and from some of the California destinations such as Yosemite National Park, San Francisco, Sacramento, Santa Cruz, Monterey, Pismo Beach, Santa Barbara & Los Angeles. Excellent big-box site, fast food, fuel station, hotel, super market shopping center, lodging, restaurant, freeway-oriented hotel, or Vehicle Sales.

LOCATION DESCRIPTION

Strategically located off the interchange of CA State Highway 99 and the Sierra Street exit in Kingsburg, CA. Location is 1 mile east of the most recent growth point of town, surrounded by future housing tracts and commercial developments. Easy recently upgraded brand new north/south Hwy 99 access & will benefit from this large, expanding commercial market. Parcel is located west of HWY 99 in the cul-de-sac of Lungren Court just off of Ventura Court.



KW COMMERCIAL
7520 N. Palm Ave #102
Fresno, CA 93711

JARED ENNIS
Executive Vice President
O: 559.705.1000
C: 559.705.1000
jared@centralcacommercial.com
CA #01945284

KEVIN LAND
Executive Managing Director
O: 559.705.1000
kevin@centralcacommercial.com
CA #01516541

We obtained the information above from sources we believe to be reliable. However, we have not verified its accuracy and make no guarantee, warranty or representation about it. It is submitted subject to the possibility of errors, omissions, change of price, rental or other conditions, prior sale, lease or financing, or withdrawal without notice. We include projections, opinions, assumptions or estimates for example only, and they may not represent current or future performance of the property. You and your tax and legal advisors should conduct your own investigation of the property and transaction.

Each Office Independently Owned and Operated **CentralCaCommercial.com**

LAND FOR SALE

2.08 ACRES CA-99 HIGHWAY COMMERCIAL DEVELOPMENT LAND

Lungren Court, Kingsburg, CA 93631



KW COMMERCIAL
7520 N. Palm Ave #102
Fresno, CA 93711

JARED ENNIS
Executive Vice President
O: 559.705.1000
C: 559.705.1000
jared@centralcacommercial.com
CA #01945284

KEVIN LAND
Executive Managing Director
O: 559.705.1000
kevin@centralcacommercial.com
CA #01516541

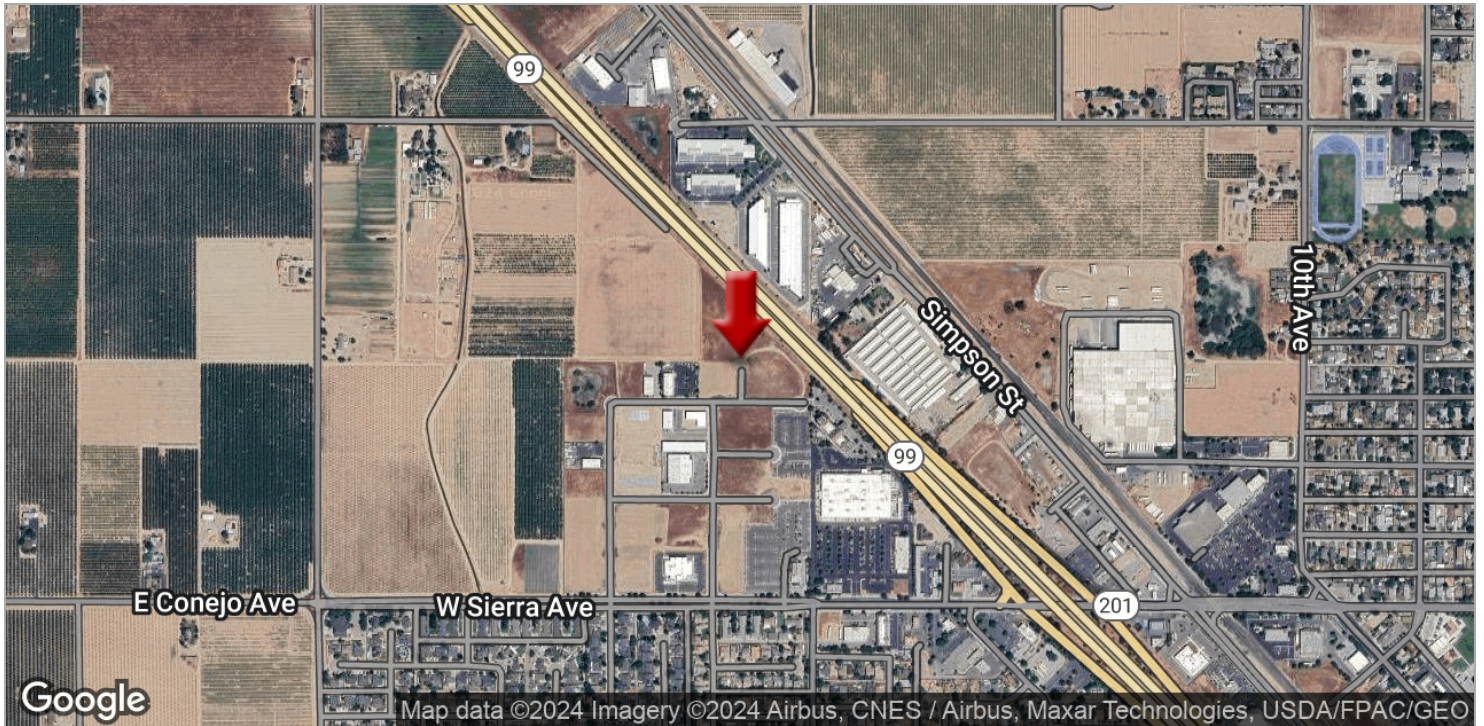
We obtained the information above from sources we believe to be reliable. However, we have not verified its accuracy and make no guarantee, warranty or representation about it. It is submitted subject to the possibility of errors, omissions, change of price, rental or other conditions, prior sale, lease or financing, or withdrawal without notice. We include projections, opinions, assumptions or estimates for example only, and they may not represent current or future performance of the property. You and your tax and legal advisors should conduct your own investigation of the property and transaction.

Each Office Independently Owned and Operated CentralCaCommercial.com

LAND FOR SALE

2.08 ACRES CA-99 HIGHWAY COMMERCIAL DEVELOPMENT LAND

Lungren Court, Kingsburg, CA 93631



KW COMMERCIAL
7520 N. Palm Ave #102
Fresno, CA 93711

JARED ENNIS
Executive Vice President
O: 559.705.1000
C: 559.705.1000
jared@centralcacommercial.com
CA #01945284

KEVIN LAND
Executive Managing Director
O: 559.705.1000
kevin@centralcacommercial.com
CA #01516541

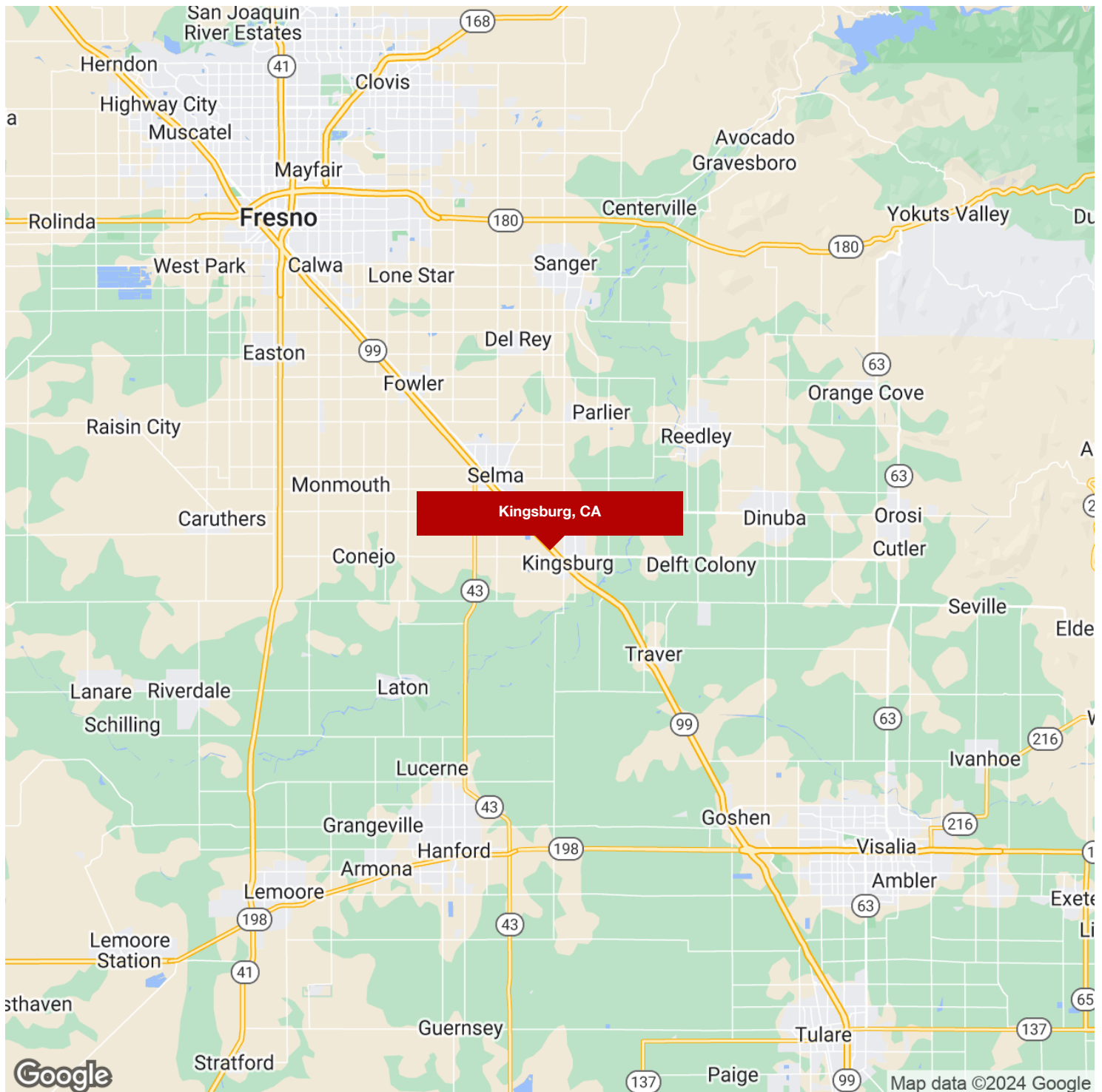
We obtained the information above from sources we believe to be reliable. However, we have not verified its accuracy and make no guarantee, warranty or representation about it. It is submitted subject to the possibility of errors, omissions, change of price, rental or other conditions, prior sale, lease or financing, or withdrawal without notice. We include projections, opinions, assumptions or estimates for example only, and they may not represent current or future performance of the property. You and your tax and legal advisors should conduct your own investigation of the property and transaction.

Each Office Independently Owned and Operated [CentralCaCommercial.com](https://www.CentralCaCommercial.com)

LAND FOR SALE

2.08 ACRES CA-99 HIGHWAY COMMERCIAL DEVELOPMENT LAND

Lungren Court, Kingsburg, CA 93631



KW COMMERCIAL
7520 N. Palm Ave #102
Fresno, CA 93711

JARED ENNIS
Executive Vice President
O: 559.705.1000
C: 559.705.1000
jared@centralcacommercial.com
CA #01945284

KEVIN LAND
Executive Managing Director
O: 559.705.1000
kevin@centralcacommercial.com
CA #01516541

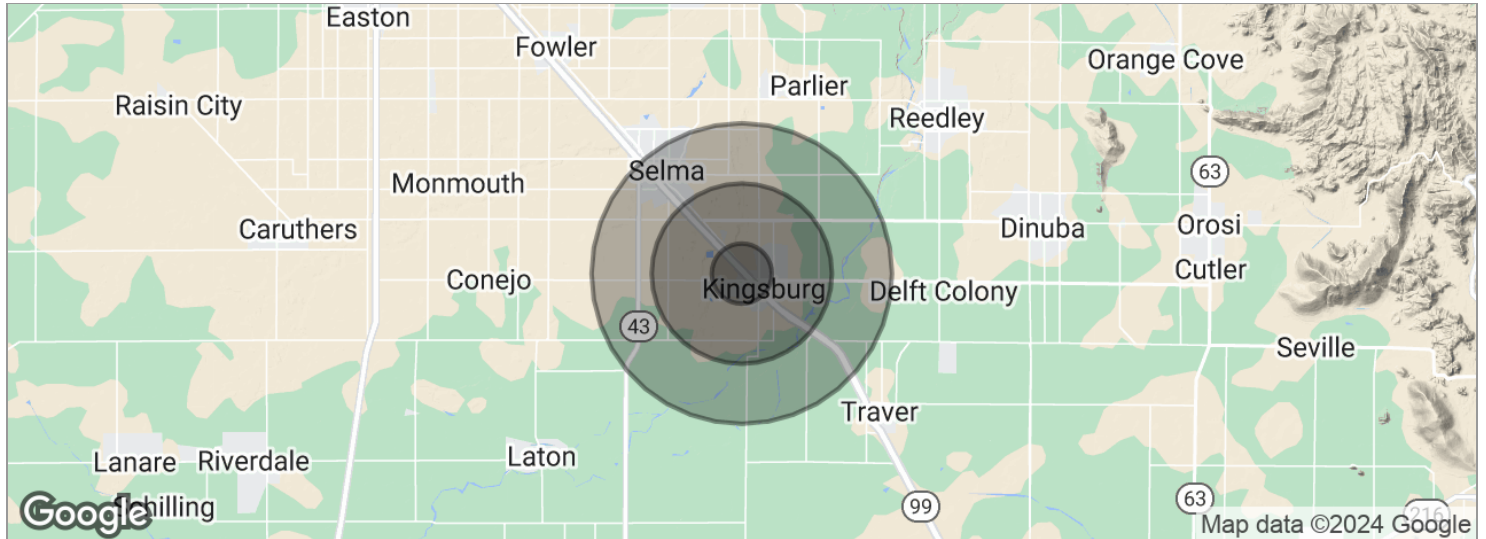
We obtained the information above from sources we believe to be reliable. However, we have not verified its accuracy and make no guarantee, warranty or representation about it. It is submitted subject to the possibility of errors, omissions, change of price, rental or other conditions, prior sale, lease or financing, or withdrawal without notice. We include projections, opinions, assumptions or estimates for example only, and they may not represent current or future performance of the property. You and your tax and legal advisors should conduct your own investigation of the property and transaction.

Each Office Independently Owned and Operated CentralCaCommercial.com

LAND FOR SALE

2.08 ACRES CA-99 HIGHWAY COMMERCIAL DEVELOPMENT LAND

Lungren Court, Kingsburg, CA 93631



POPULATION	1 MILE	3 MILES	5 MILES
Total population	3,806	14,635	34,814
Median age	29.3	30.6	30.3
Median age (male)	27.8	29.4	29.8
Median age (Female)	30.5	31.8	31.1
HOUSEHOLDS & INCOME	1 MILE	3 MILES	5 MILES
Total households	1,161	4,497	10,250
# of persons per HH	3.3	3.3	3.4
Average HH income	\$61,501	\$65,451	\$60,399
Average house value	\$421,194	\$323,835	\$298,824
ETHNICITY (%)	1 MILE	3 MILES	5 MILES
Hispanic	58.4%	53.3%	62.2%
RACE (%)	1 MILE	3 MILES	5 MILES
White	77.2%	74.2%	69.5%
Black	0.3%	0.6%	0.8%
Asian	2.5%	4.3%	4.6%
Hawaiian	0.3%	0.3%	0.1%
American Indian	0.2%	0.6%	0.9%
Other	16.7%	17.1%	21.0%

* Demographic data derived from 2020 ACS - US Census

KW COMMERCIAL
7520 N. Palm Ave #102
Fresno, CA 93711

JARED ENNIS
Executive Vice President
O: 559.705.1000
C: 559.705.1000
jared@centralcacommercial.com
CA #01945284

KEVIN LAND
Executive Managing Director
O: 559.705.1000
kevin@centralcacommercial.com
CA #01516541

We obtained the information above from sources we believe to be reliable. However, we have not verified its accuracy and make no guarantee, warranty or representation about it. It is submitted subject to the possibility of errors, omissions, change of price, rental or other conditions, prior sale, lease or financing, or withdrawal without notice. We include projections, opinions, assumptions or estimates for example only, and they may not represent current or future performance of the property. You and your tax and legal advisors should conduct your own investigation of the property and transaction.

Each Office Independently Owned and Operated [CentralCaCommercial.com](https://www.CentralCaCommercial.com)