

BOARDWALK PLAZA OFFICE BUILDING

9725 SW Beaverton Hillsdale Highway, Beaverton, Oregon



One Remaining Space

FOR LEASE



PROPERTY DESCRIPTION

BUILDING SIZE

38,777 SF Rentable Building Area

AVAILABLE SPACES

Suite 330: 1,598 RSF

LOAD FACTOR

15.72%

PARKING

4/1,000 SF of Area Leased

ZONING

CO, Commercial Office, City of Beaverton

LEASE RATE

\$17.00/SF/Year Full Service

LEASE TERM

3-5 Years



John Van Zonneveld

503.972.7290

johnv@macadamforbes.com

1800 SW First Avenue, Suite 650 | Portland OR 97201 | WWW.MACADAMFORBES.COM | 503.227.2500

9725 SW Beaverton Hillsdale Highway

FOR LEASE

Beaverton, Oregon



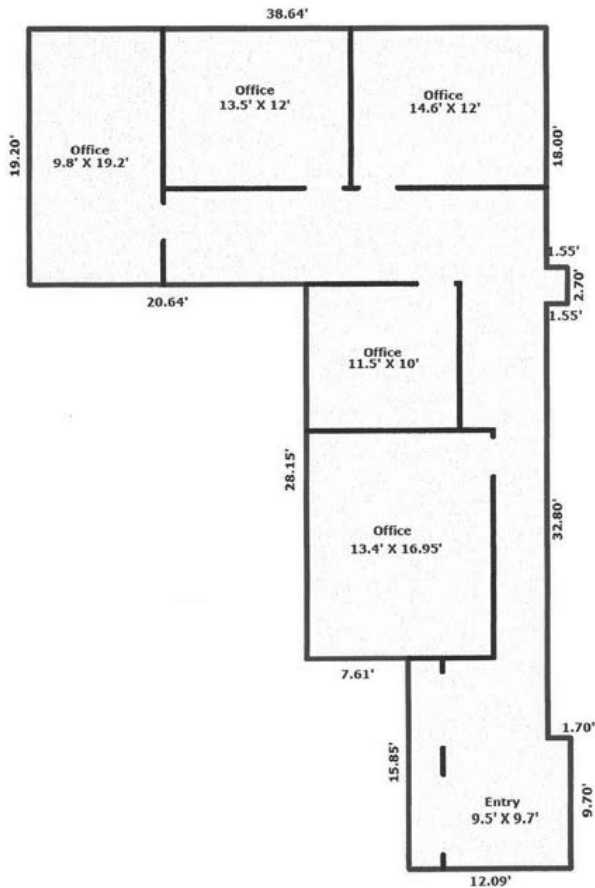
AMENITIES

- Exterior signage
- Elevator Served
- Conveniently located near Downtown Portland, Beaverton and Highway 217
- Close proximity to retail shopping and restaurants
- Excellent parking ratio
- Well maintained building - local owner
- Excellent visibility and image
- Upgraded LED lighting throughout the building and tenant spaces



FLOOR PLAN

Suite 330 - 1,598 RSF



John Van Zonneveld
503.972.7290
johnv@macadamforbes.com