

PROPERTY OVERVIEW

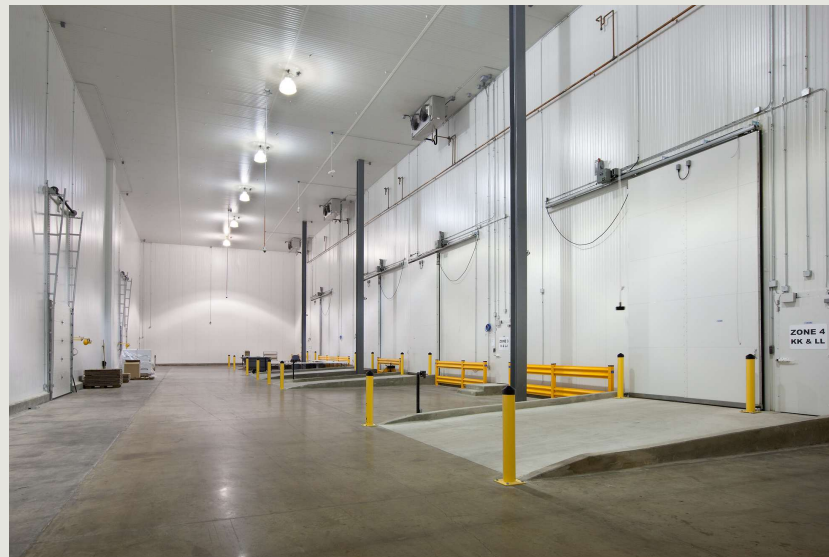
GOLDEN RING II BUILDING 2

6935-67 GOLDEN RING ROAD, BALTIMORE, MD 21237



Building Information

- Located at the corner of Route 7/Philadelphia Road and Golden Ring Road with quick access to I-695, I-95 and the Harbor Tunnel
- One-story brick construction with steel trim
- 20' clear ceiling heights
- 34 rear-loading docks
- FiOS service available
- 2,700 & 3,600 SF typical bay size
- Surface parking
- Sprinklered
- Gas heat
- 120/208 volt, 3-phase, 4-wire service
- Public utilities
- Professionally landscaped
- Baltimore County, ML-IM zoning: light manufacturing, warehousing, distribution, office



Surrounding Amenities

- Walgreens
- IHOP
- Walmart
- Panda Express
- Chipotle
- The Home Depot
- Giant Supermarket
- United States Postal Service
- M&T Bank
- Office Depot
- Jimmy John's
- McDonald's

Site Plan

Golden Ring II

6935-67 Golden Ring Road

Lets go duke

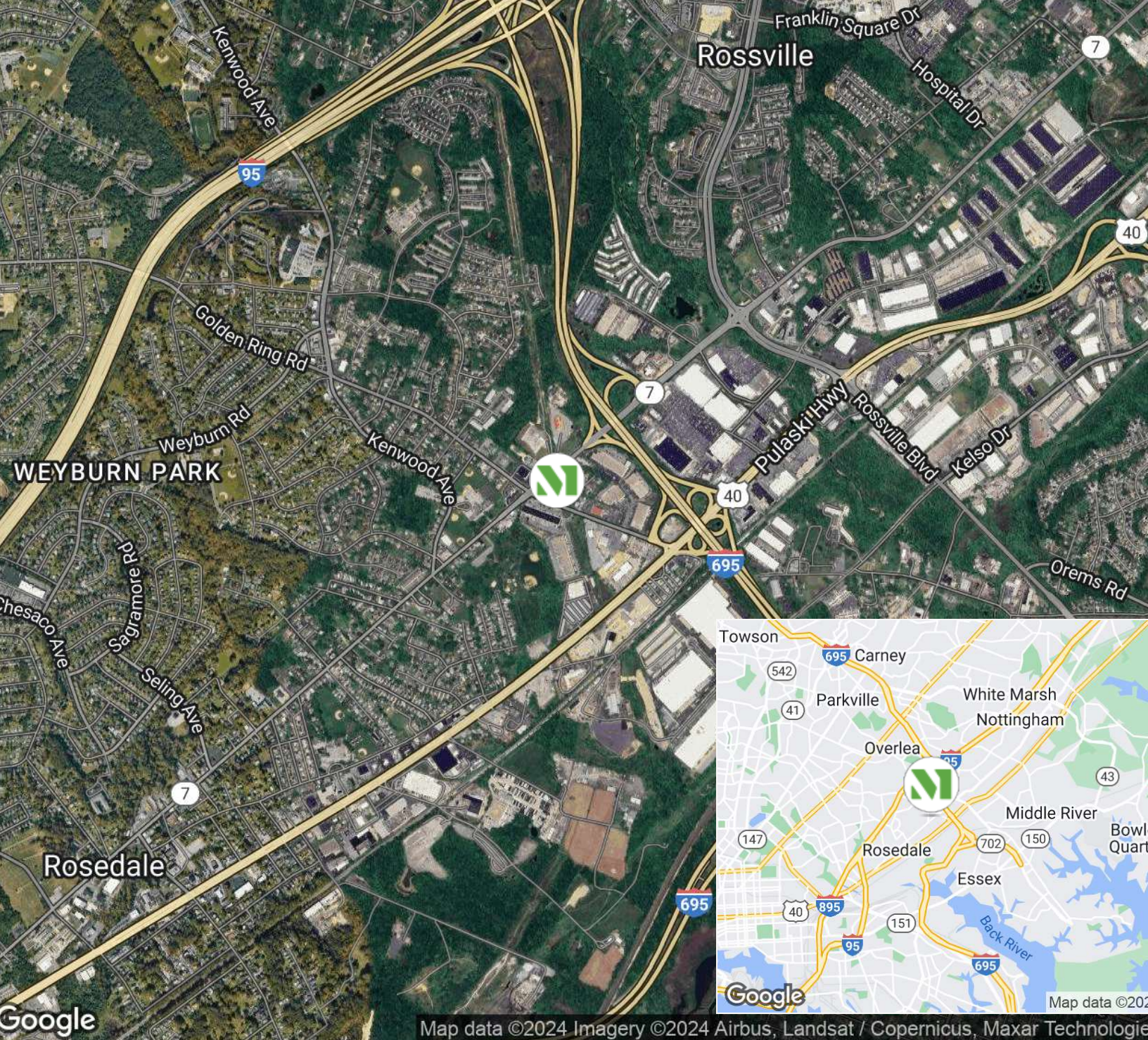
62,400 SF



“Merritt’s help allowed us to continue to allocate as many of our funds toward our mission as possible, while also achieving an amazing home that is a great welcome center for our patients, families, donors and volunteers.”

BROCK YETSO
PRESIDENT & CEO
ULMAN CANCER FUND FOR YOUNG ADULTS





CREATING HOMES FOR BUSINESSES

Established in 1967, Merritt Properties is a privately held commercial real estate company offering over 21 million square feet of Class A office, flex, warehouse, industrial, retail and build-to-suit spaces throughout Maryland, Florida, North Carolina and Virginia. We design, build, lease and manage our properties for the long term with a commitment to providing the highest quality service to all of our customers.

For additional information or to schedule a tour, contact:

Whit Levering | Ashley Reimer | Lauren Lindsay

merrittproperties.com

MD: 410.298.2600 | VA: 703.858.2725 | NC: 919.526.0070 | FL: 904.515.2030

