



8701 W Dodge Road | Omaha, Nebraska 68114

\$13.00 PSF

### Property Features

- Excellent West Dodge Road visibility and just minutes from I-680
- Extensive interior and exterior renovations completed in 2016
- Professionally managed by NAI NP Dodge
- Common areas include restrooms and vending room on second floor

13321 California Street, Suite 105  
Omaha, NE 68154  
402 255 6060  
[nainpdodge.com](http://nainpdodge.com)

**Chris Falcone**  
Senior Vice President  
402 255 6066  
[cfalcone@npdodge.com](mailto:cfalcone@npdodge.com)

8701 W Dodge Road



### Building Details

Building Size	39,830 SF
Tenancy	Multiple
Building Class	B
Number of Floors	4
Year Built	1983
Year Renovated	2016
Construction Status	Existing
Elevator	2
ADA Access	Yes

### Property Details

Lot Size	2.86 Acres
Zoning	CC
Traffic Count	64,418 Vehicles per day
Parking Spaces	234
Parking Ratio	5.9:1,000

### Location Details

Market	Central West Dodge
Submarket	Central Dodge
County	Douglas
Cross Streets	90th & W Dodge Road

### Demographics

Demographics	1 Mile	3 Miles	5 Miles
Total Households	5,361	45,782	121,332
Total Population	10,702	101,586	284,621
Average HH Income	\$77,131	\$71,350	\$66,327

### Available Spaces

Space	Space Use	Lease Rate	Lease Type	Size (SF)	Term
8701 W Dodge Road	Office Building	\$13.00 SF/yr	NNN	1,509 SF	60 months



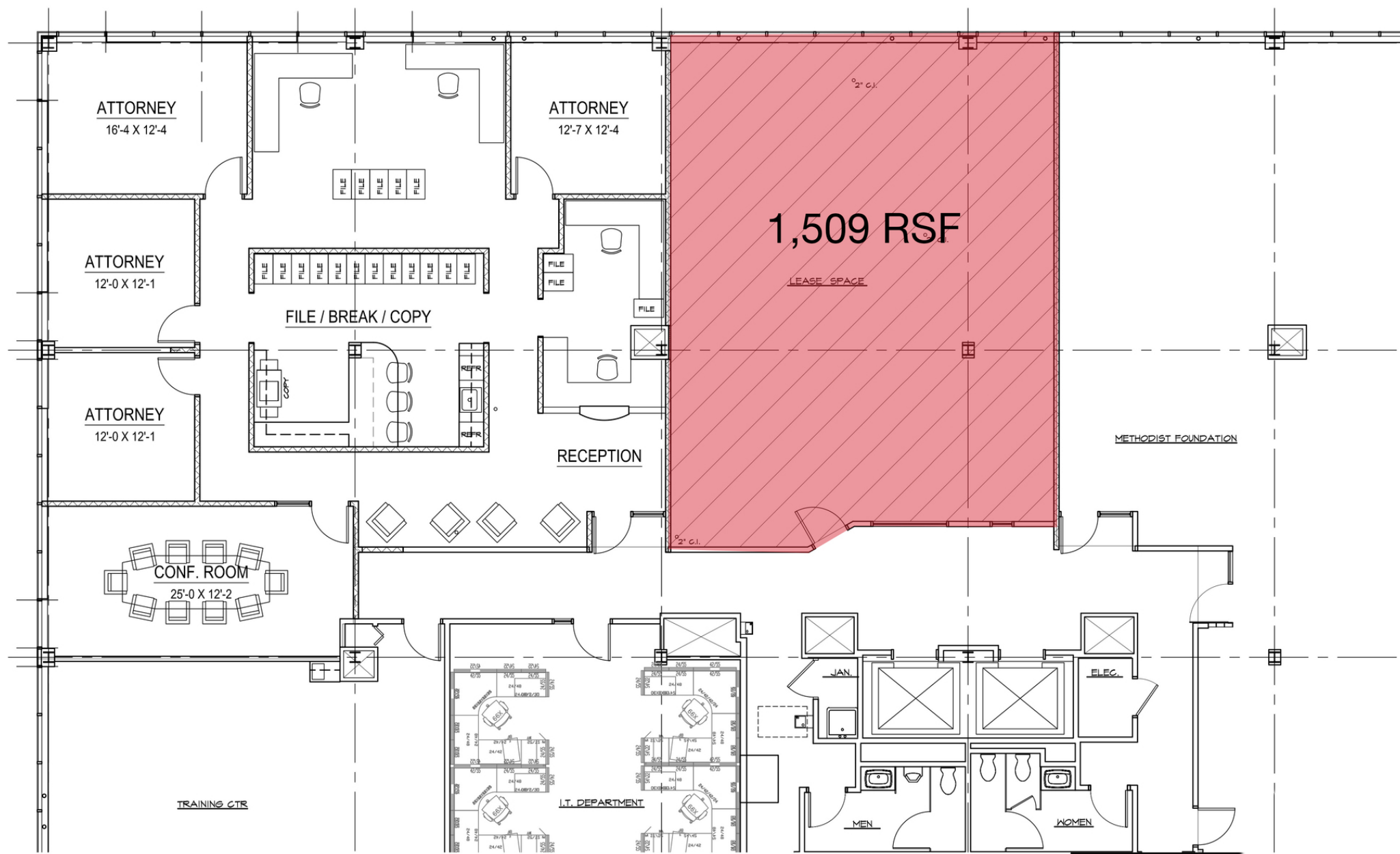
8701 W Dodge Road



**NA**NP Dodge

**Chris Falcone**  
Senior Vice President  
+1 402 255 6066  
cfalcone@npdodge.com

13321 California Street, Suite 105  
Omaha, NE 68154  
402 255 6060 tel  
[nainpdodge.com](http://nainpdodge.com)





8701 W Dodge Road

