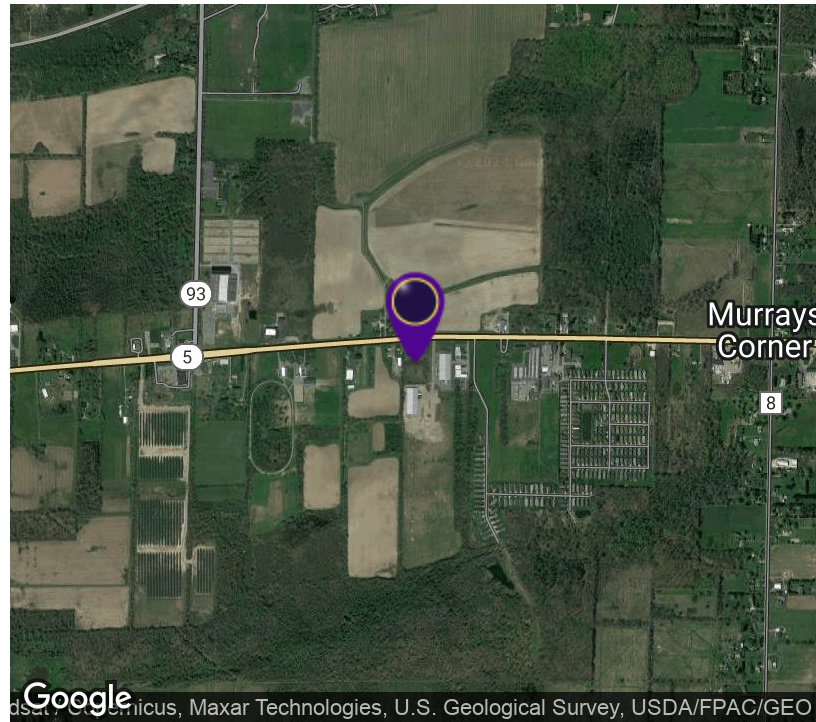


# 2.8 +/- Acres Vacant Land

13251 Main Road, Newstead, NY 14001



## OFFERING SUMMARY

Sale Price: \$109,899

Lot Size: 2.8 Acres

Zoning: Commercial

Price / SF: \$0.90

## PROPERTY OVERVIEW

Vacant land zoned commercial consisting of 2.8 +/- acres. The parcel has 254' +/- frontage on Main Road with a depth of 489' with an irregular depth. Flat land. Utilities at the street include water, electric, and gas. Can be used for house, office, retail, or garage space. Adjacent to Dream Bo Stables

## LOCATION OVERVIEW

Located between Akron Tonawanda Creek Road and Crittenden Road. Located just minutes east of Clarence.

## PROPERTY HIGHLIGHTS

- 254' of Frontage on 2.8 +/- Acres
- Highly Visible
- Water, Gas, & Electric Available
- Zoned Commercial
- Flat Land



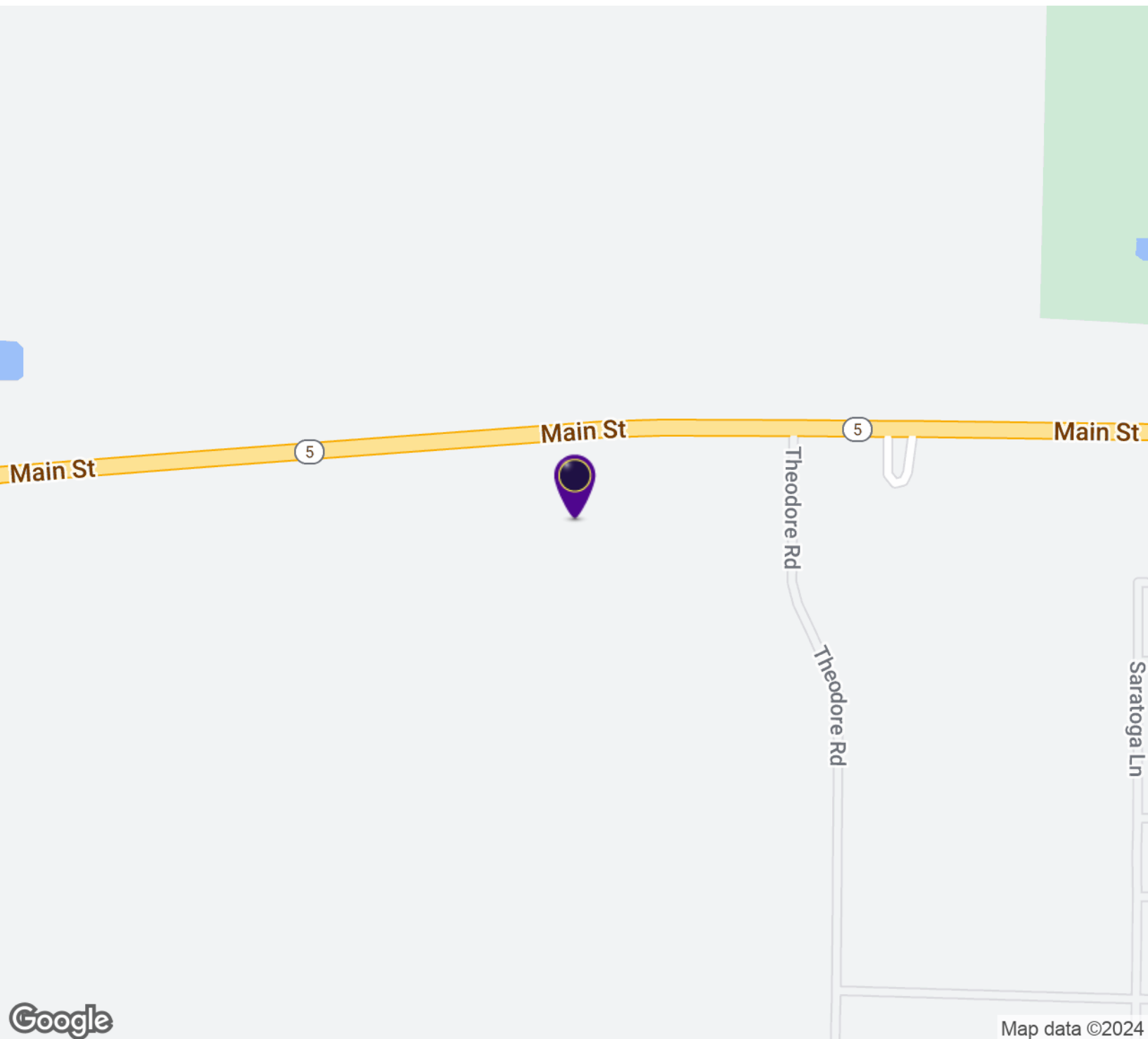
**RICK RECCKIO**  
716.998.4422  
rick@recckio.com

4455 TRANSIT ROAD, SUITE 3B  
Williamsville, NY 14221  
(O) 716.631.5555 // (F) 716.632.6666  
www.recckio.com

## LOCATION MAP

# 2.8 +/- Acres Vacant Land

13251 Main Road, Newstead, NY 14001



**RICK RECCKIO**  
716.998.4422  
rick@recckio.com

4455 TRANSIT ROAD, SUITE 3B  
Williamsville, NY 14221  
(O) 716.631.5555 // (F) 716.632.6666  
www.recckio.com

# 2.8 +/- Acres Vacant Land

13251 Main Road, Newstead, NY 14001



## HOUSEHOLDS & INCOME

\* Demographic data derived from 2020 ACS - US Census