

PROPERTY OVERVIEW

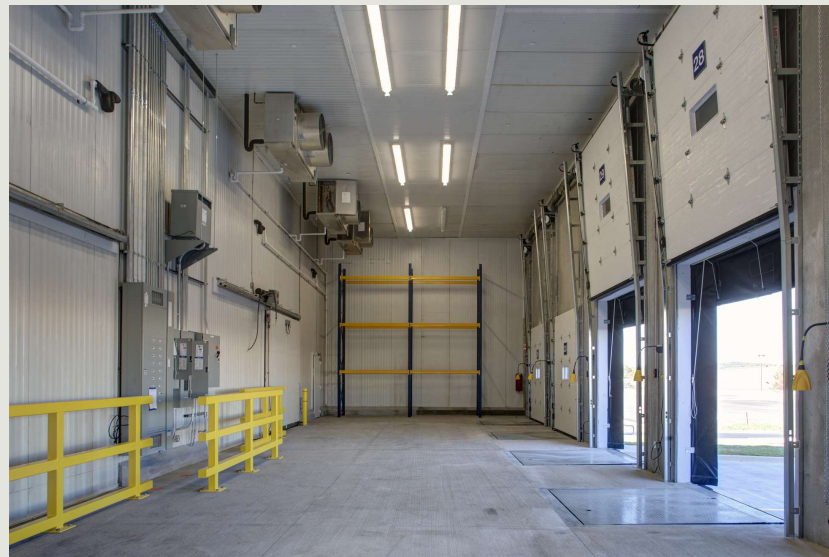
SULPHUR SPRING

3721-43 OLD GEORGETOWN ROAD, BALTIMORE, MD 21227



Building Information

- Easy access via U.S. Route 1 and I-695
- Located in the Southwest Enterprise Zone
- 41,800 SF light industrial building
- One-story brick construction with steel trim
- 20' clear ceiling height
- Docks and drive-ins
- Comcast service available
- 120/208 volt, 3-phase, 4-wire service
- Gas heat/public utilities
- Sprinklered
- Baltimore County, ML zoning: light manufacturing, warehousing, distribution, office
- Bus stop at corner of Sulphur Spring Road and Old Georgetown Road



Surrounding Amenities

- Chick-fil-A
- McDonald's
- Panda Express
- IHOP
- Wendy's
- Royal Farms
- Burger King
- Three Brothers Italian Restaurant
- Wawa
- Office Depot
- Rite Aid
- The Home Depot
- LA Fitness
- Walmart

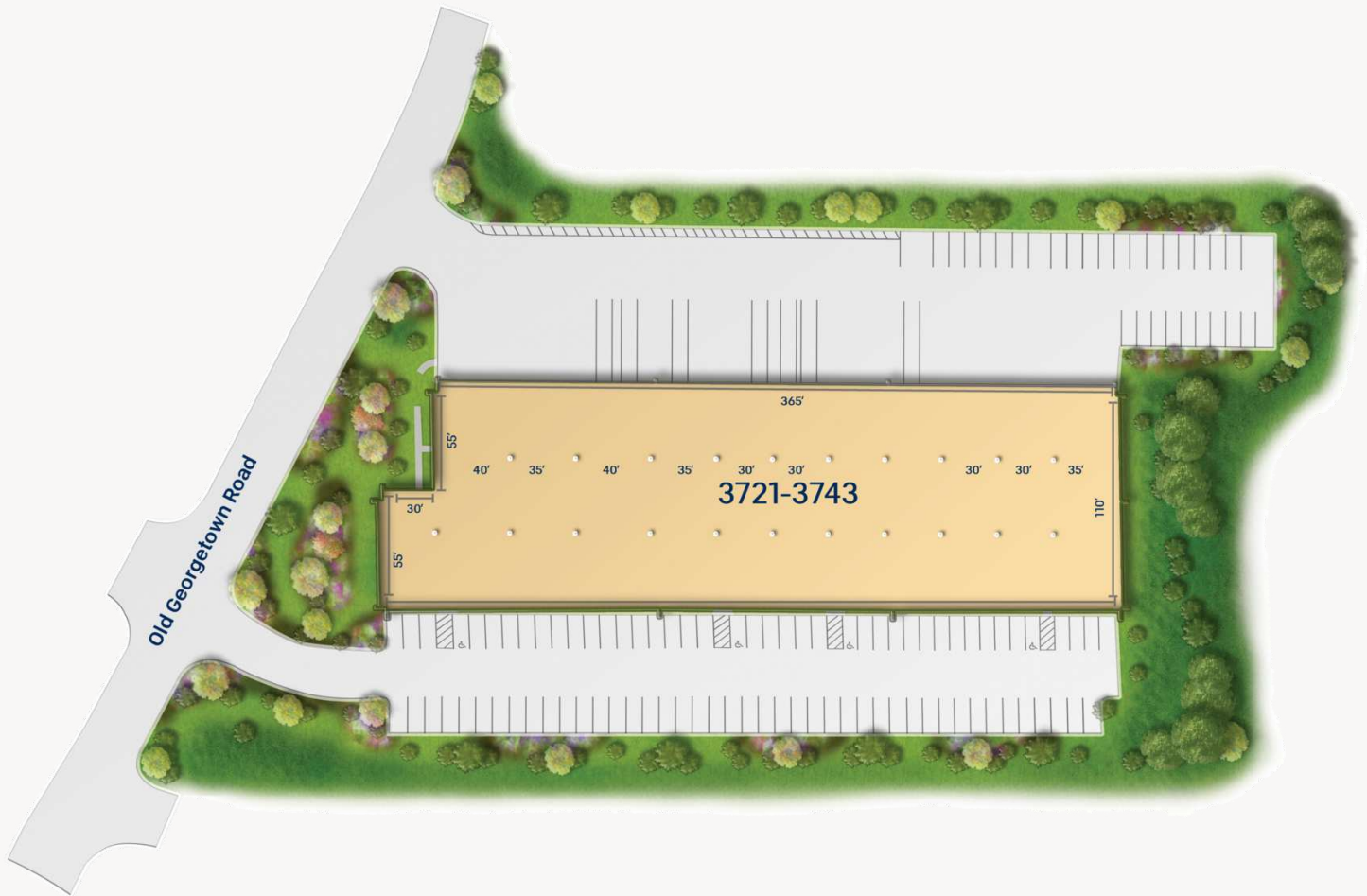
Site Plan

Sulphur Spring

3721-43 Old Georgetown Road

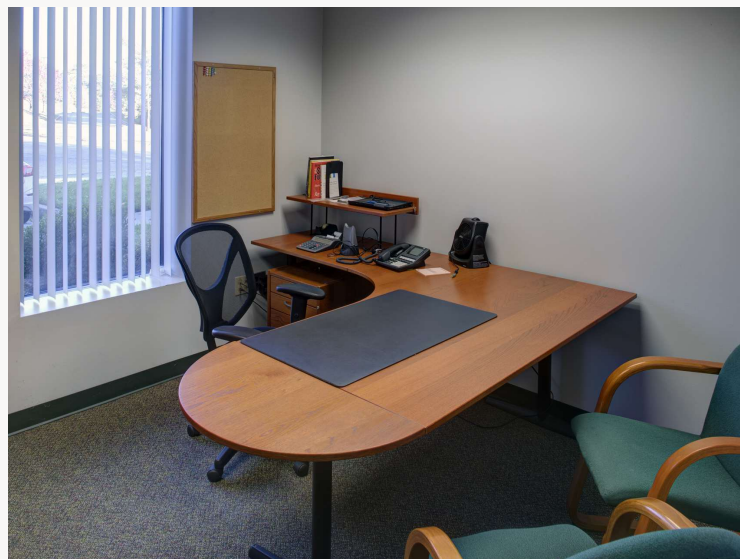
Light Industrial

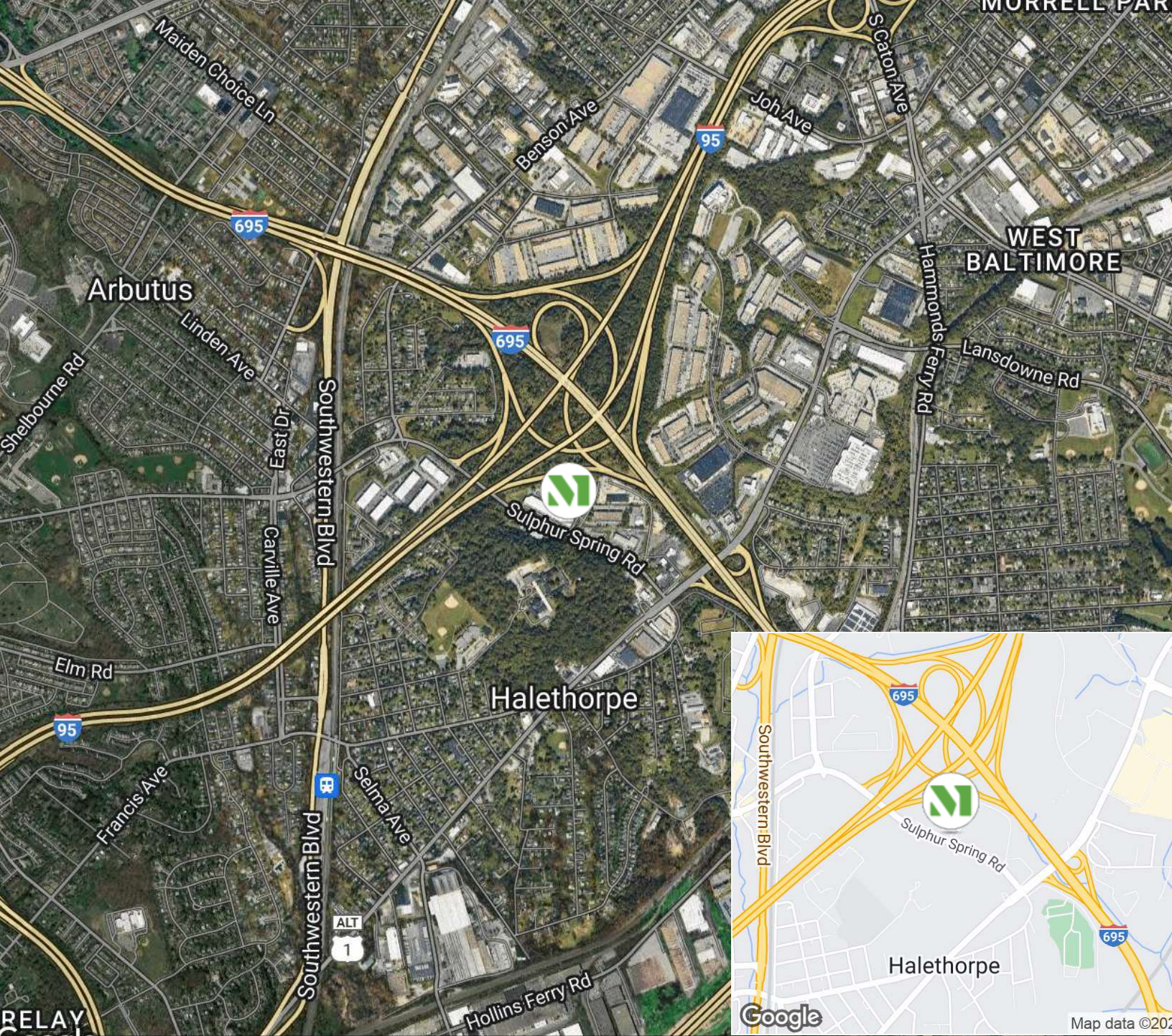
41,800 SF



“As our company grew, Merritt coordinated a seamless transition from a small warehouse to a sophisticated production facility. This flexibility allowed us to serve our clients better and continue our growth. Thank you, Merritt!”

JUDITH E. ANTISDEL
PRESIDENT
ANNE-TISDALE DIRECT





CREATING HOMES FOR BUSINESSES

Established in 1967, Merritt Properties is a privately held commercial real estate company offering over 21 million square feet of Class A office, flex, warehouse, industrial, retail and build-to-suit spaces throughout Maryland, Florida, North Carolina and Virginia. We design, build, lease and manage our properties for the long term with a commitment to providing the highest quality service to all of our customers.

For additional information or to schedule a tour, contact:

Vince Bagli | Elizabeth Allison | Jamie Campbell | Delfina Kelly

merrittproperties.com

MD: 410.298.2600 | VA: 703.858.2725 | NC: 919.526.0070 | FL: 904.515.2030

