

800 W. INDIANTOWN ROAD

800 W. INDIANTOWN ROAD
JUPITER, FL 33458

Robert Hamman
Senior Advisor
561.346.2310
robert.hamman@svn.com

Property Summary



OFFERING SUMMARY

Sale Price:	\$2,200,000
Lease Rate:	\$13,000/mo. NNN
Total Building Size:	9,786± SF
Building Size, East Building:	3,460± SF
Building Size, West Building:	6,326± SF
Lot Size:	0.63± Acres
Year Built, East Building:	1964
Year Built, West Building:	1976
Year Renovated:	2012
Zoning:	C2

PROPERTY OVERVIEW

Rarely Available, Jupiter, Florida office/retail situated on 0.63± acres on the south side of Indiantown Road. The east building is 3,460± SF of retail space with four fitting rooms and two bathrooms. The west building totals 6,326± SF with 3,163± SF on the first floor and 3,163± SF on the second floor. The first floor consists of retail space in the front and warehouse space in the back. The second floor contains all office space with two offices, a break room, a workstation area, and two bathrooms. This building was completely updated, including the HVAC system, plumbing, three-phase electric, hurricane windows, and doors throughout, as well as a freight lift. Great visibility. Easy access. Close proximity to I-95, Florida's Turnpike and U.S. Highway One. High Traffic Count of 44,000+.

LOCATION OVERVIEW

This property is located on Jupiter's main corridor, Indiantown Road, in close proximity to Military Trail, U.S. 1, I-95 and Florida's Turnpike.

PROPERTY HIGHLIGHTS

- Rarely Available Freestanding Retail/Office Building
- Located on Indiantown Rd., the main corridor for Jupiter
- Corner location with great visibility and easy access

800 W. INDIANTOWN ROAD JUPITER, FL 33458

SVN | Florida Commercial Real Estate Advisors | Page 2

The information presented here is deemed to be accurate, but it has not been independently verified. We make no guarantee, warranty or representation. It is your responsibility to independently confirm accuracy and completeness. All SVN® offices are independently owned and operated.

East Building - 3,460± Retail Space



West Building - 1st Floor 3,163± SF Retail Space



West Building - 2nd Floor 3,163± SF Office Space



800 W. INDIANTOWN ROAD JUPITER, FL 33458

SVN | Florida Commercial Real Estate Advisors | Page 5

The information presented here is deemed to be accurate, but it has not been independently verified. We make no guarantee, warranty or representation. It is your responsibility to independently confirm accuracy and completeness. All SVN® offices are independently owned and operated.

West Building - 2nd Floor 3,163± SF Office Space



Exterior Photos

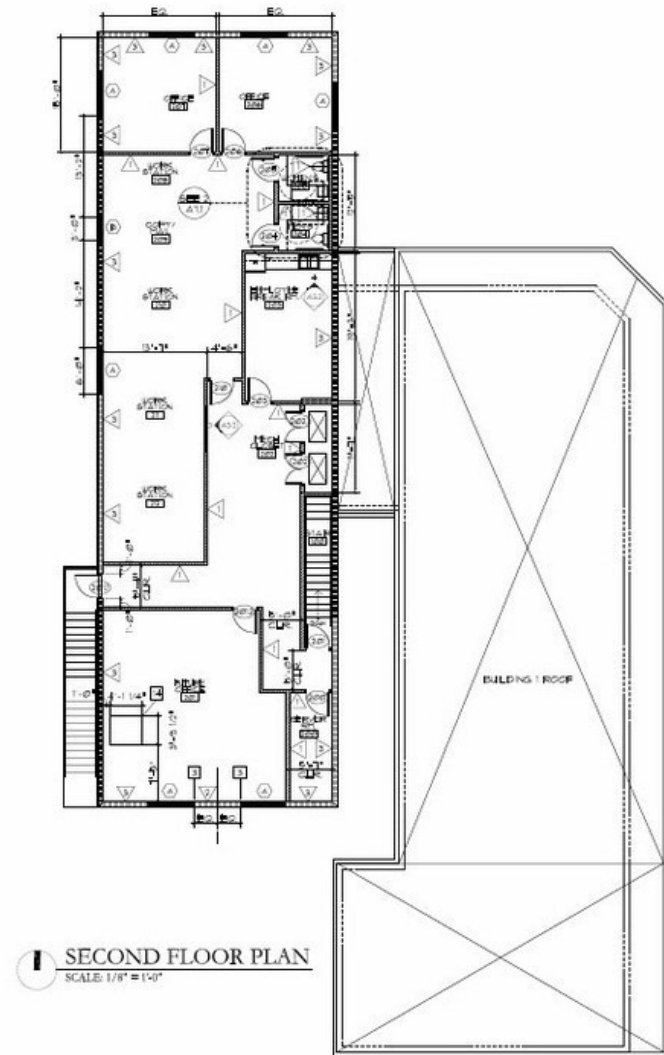
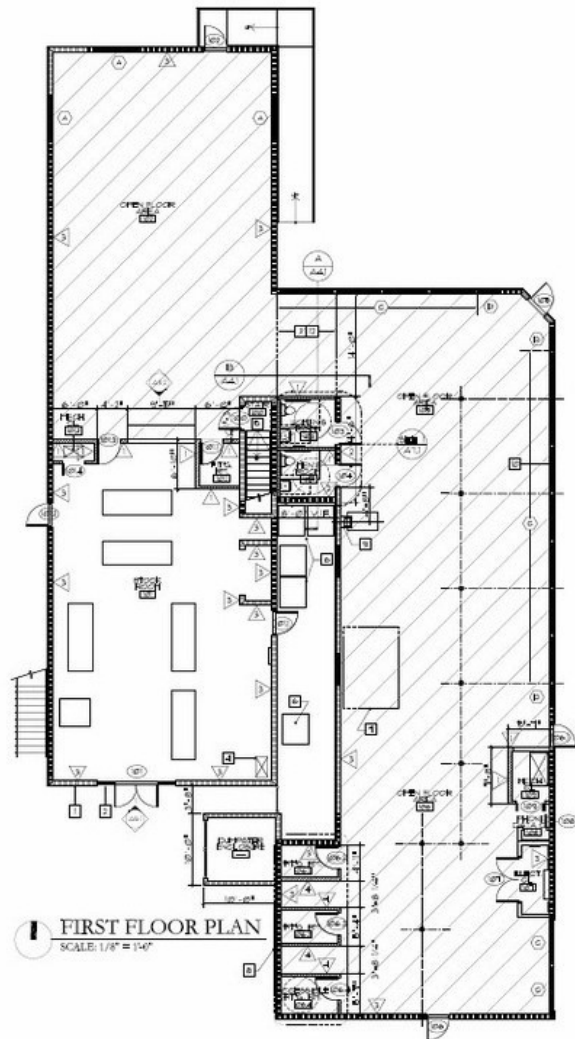


800 W. INDIANTOWN ROAD JUPITER, FL 33458

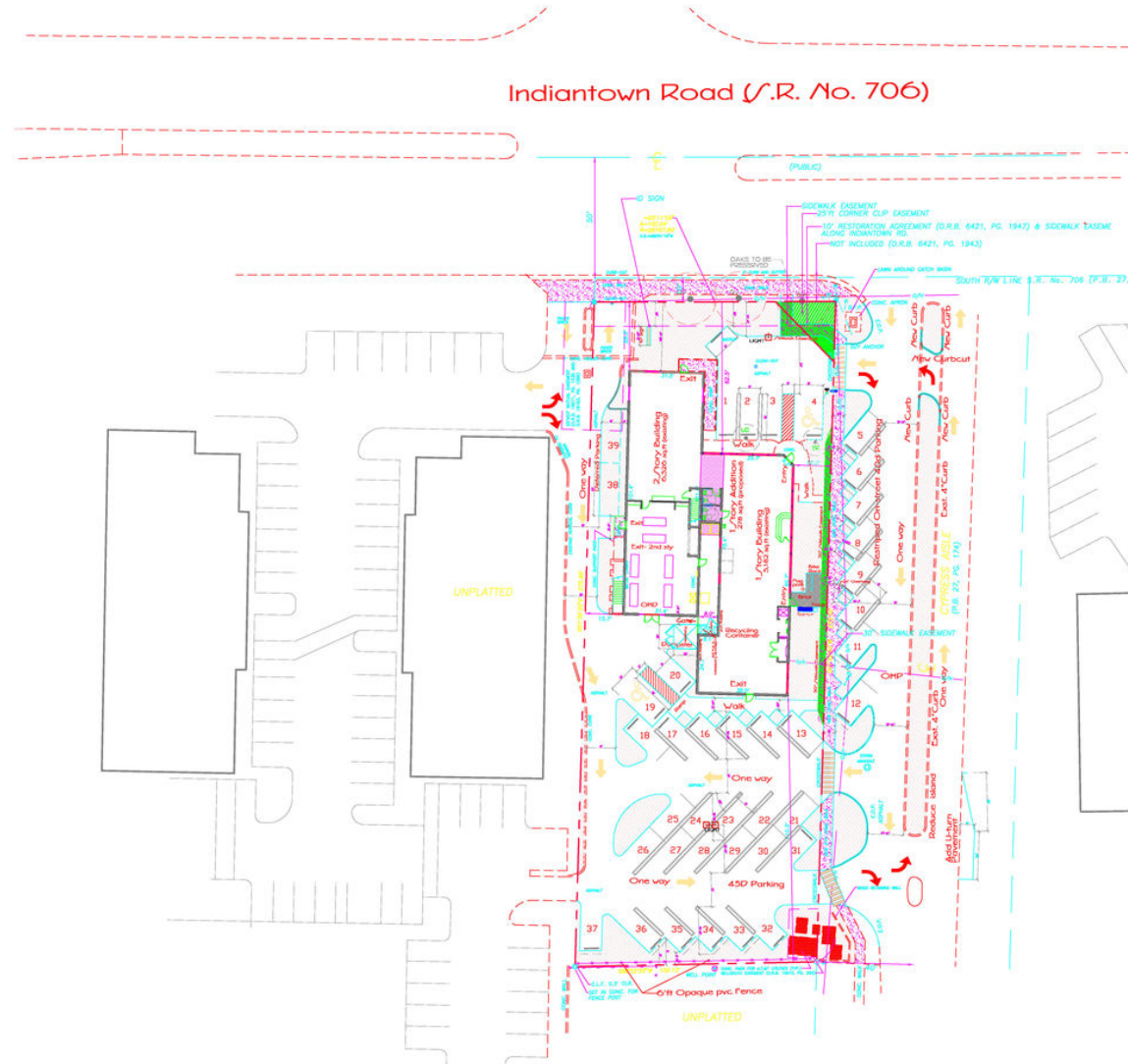
SVN | Florida Commercial Real Estate Advisors | Page 7

The information presented here is deemed to be accurate, but it has not been independently verified. We make no guarantee, warranty or representation. It is your responsibility to independently confirm accuracy and completeness. All SVN® offices are independently owned and operated.

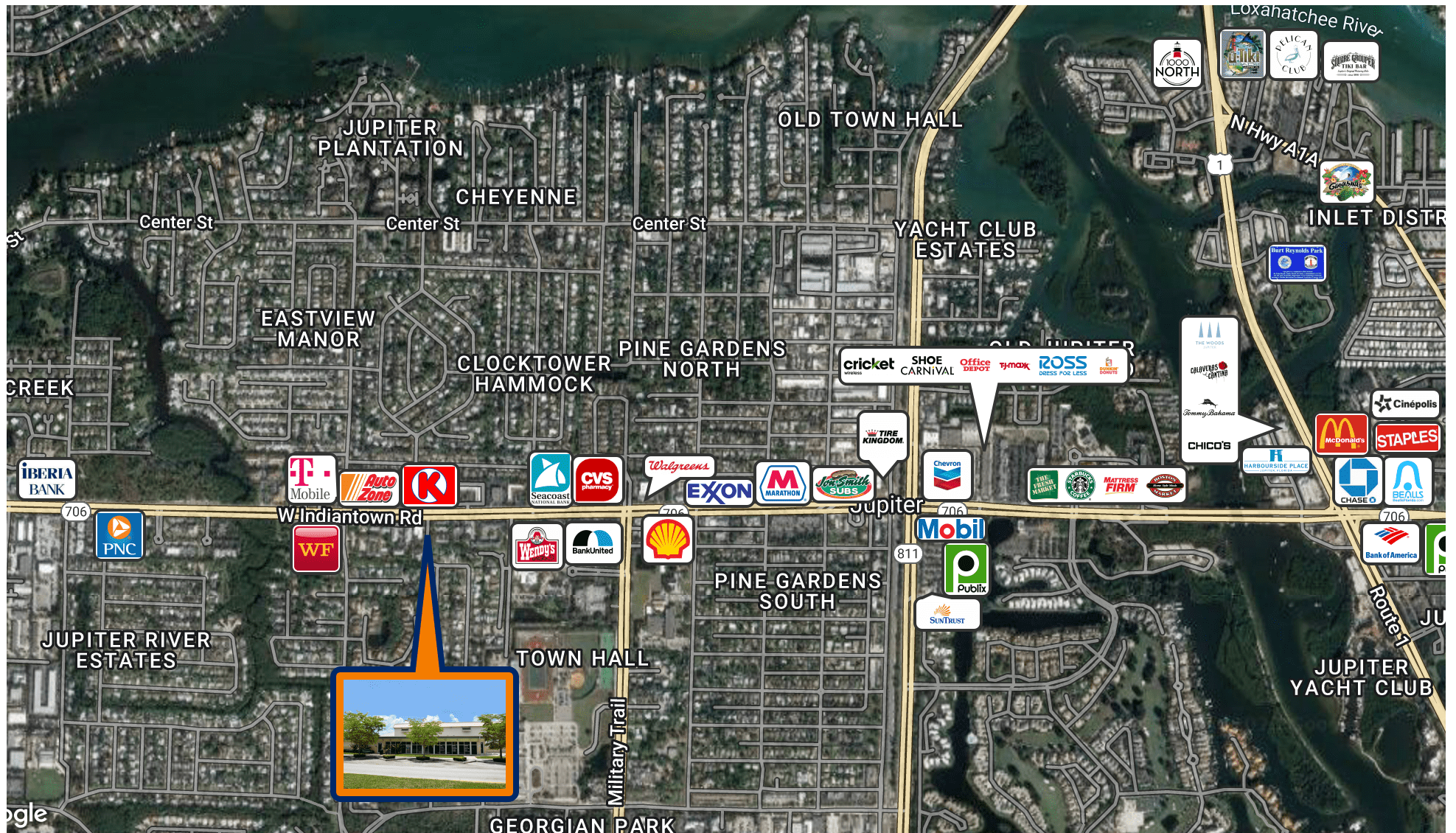
Floor Plans



Site Plan

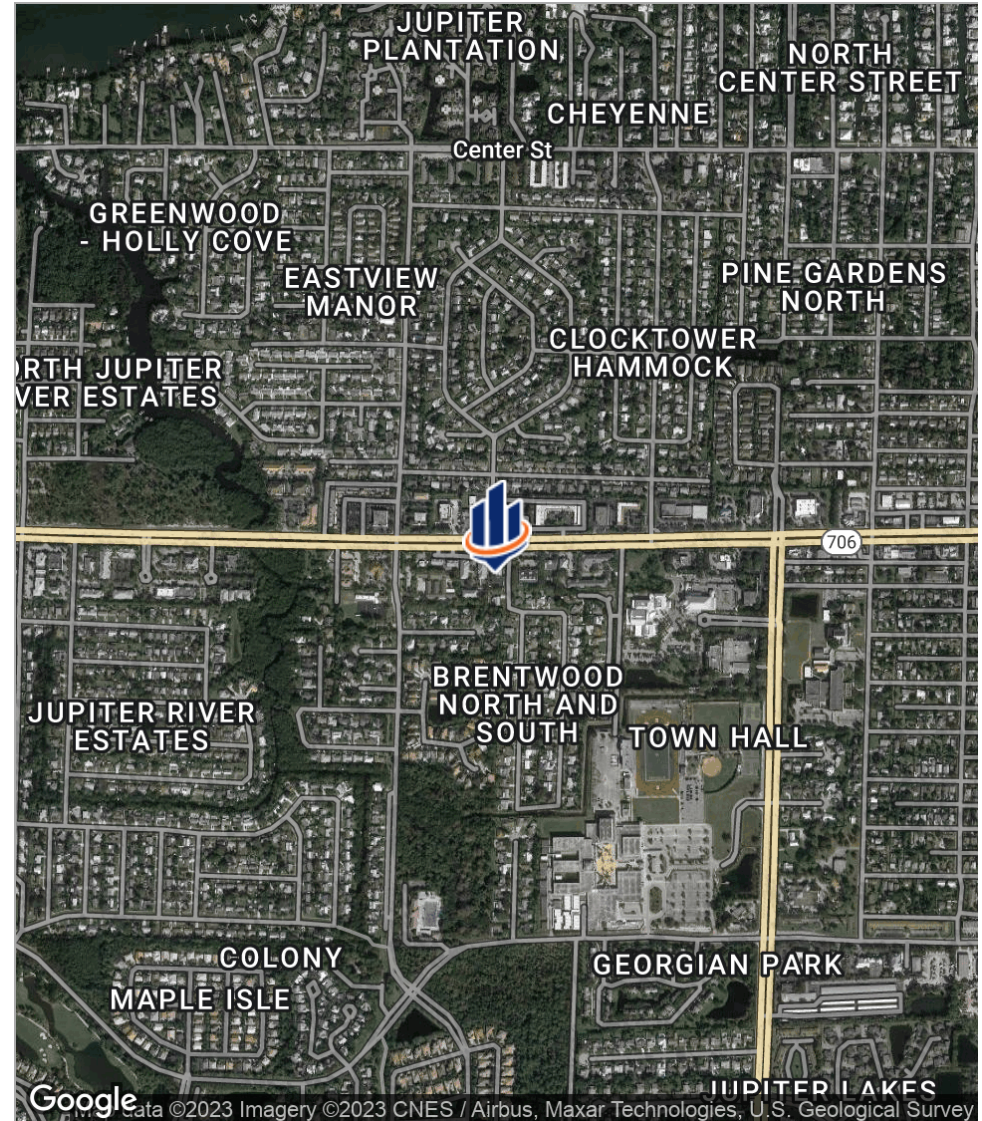
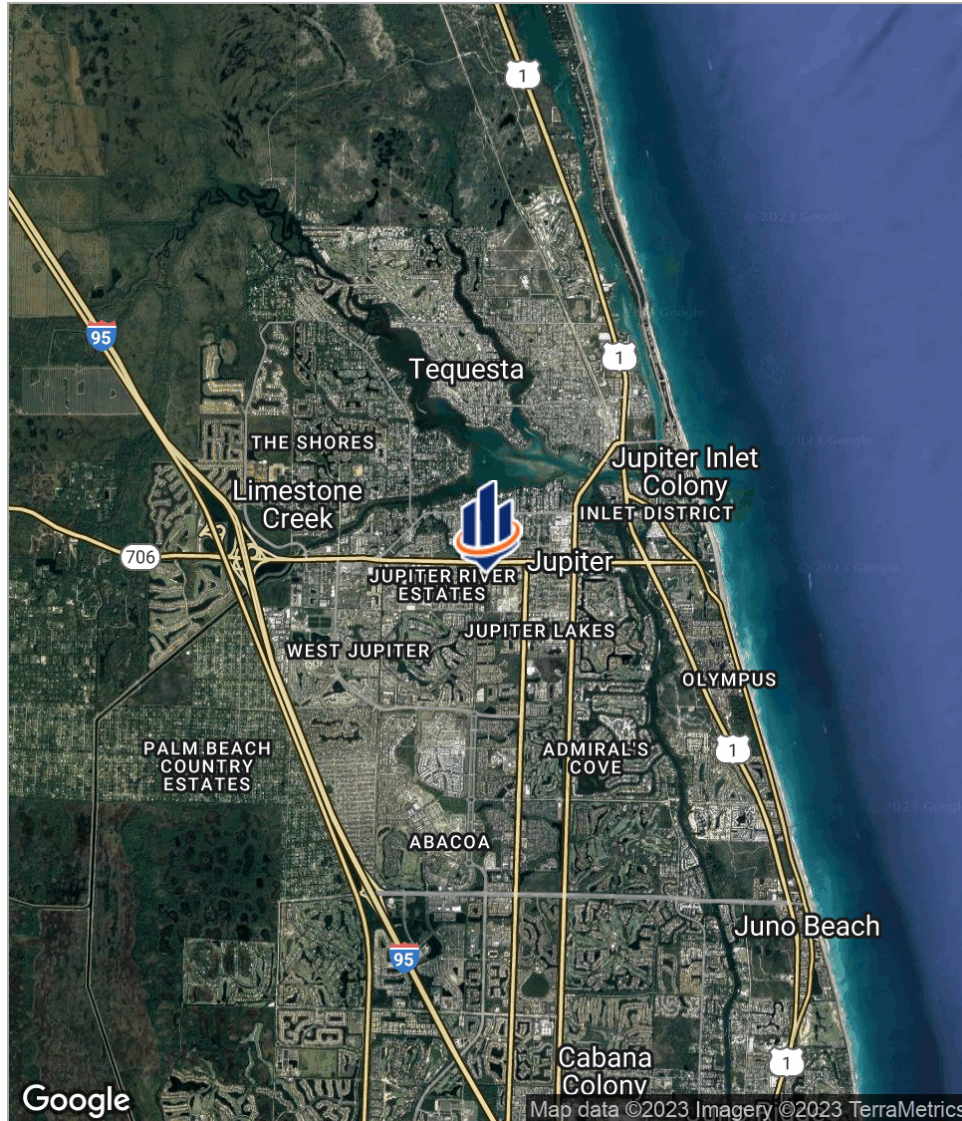


Retailer Map

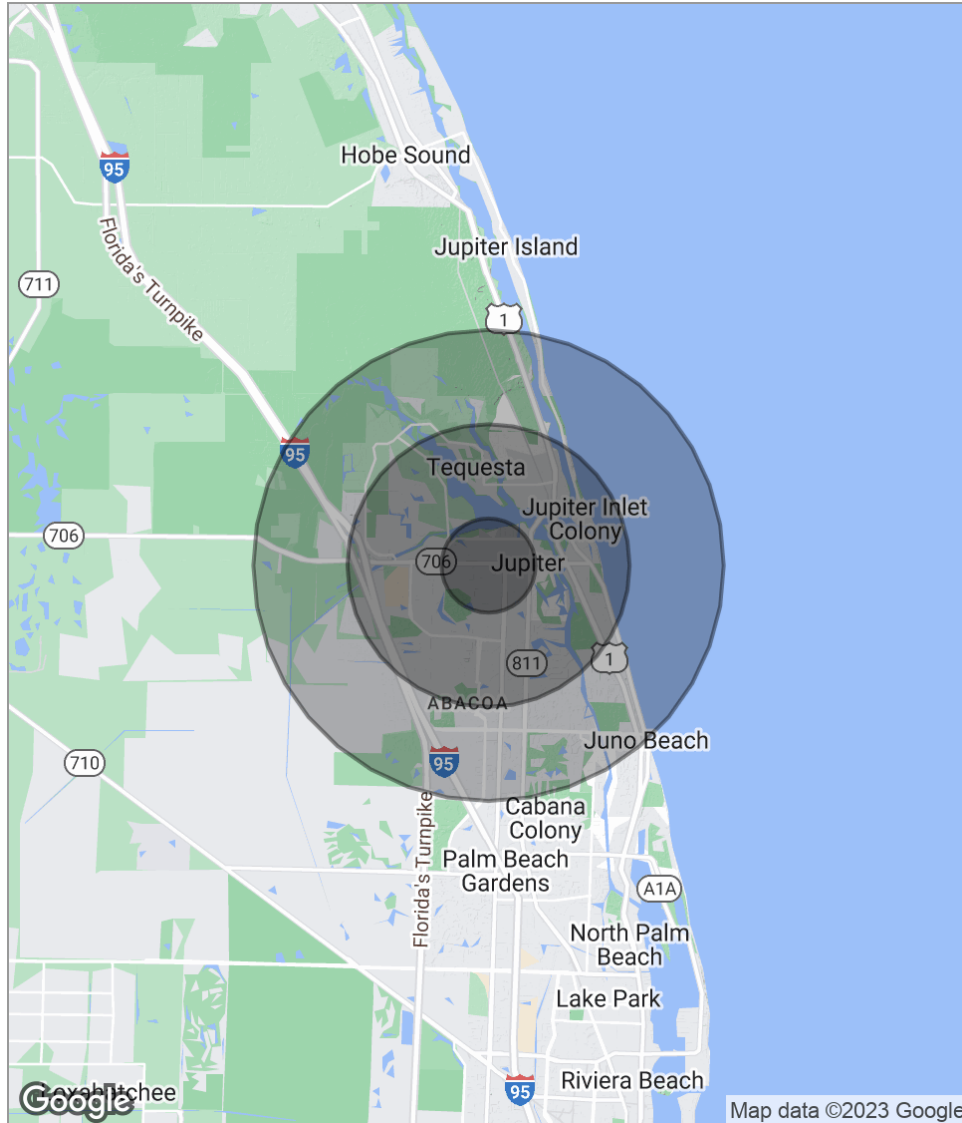


800 W. INDIANTOWN ROAD JUPITER, FL 33458

Location Maps



Demographics Map



POPULATION	1 MILE	3 MILES	5 MILES
Total population	11,389	63,280	94,147
Median age	36.9	42.6	44.7
Median age (Male)	36.6	42.6	44.8
Median age (Female)	36.3	42.7	44.7
HOUSEHOLDS & INCOME	1 MILE	3 MILES	5 MILES
Total households	4,151	25,630	38,835
# of persons per HH	2.7	2.5	2.4
Average HH income	\$76,720	\$98,475	\$106,661
Average house value	\$369,625	\$430,821	\$452,199

* Demographic data derived from 2020 ACS - US Census



810 Saturn Street, Suite 24 Unit B
Jupiter, FL 33477
561.346.2310