



## Demographic and Income Profile

Pine Hollow Golf Club  
Ring: 2 mile radius

Prepared by Esri  
Latitude: 42.28128  
Longitude: -84.32249

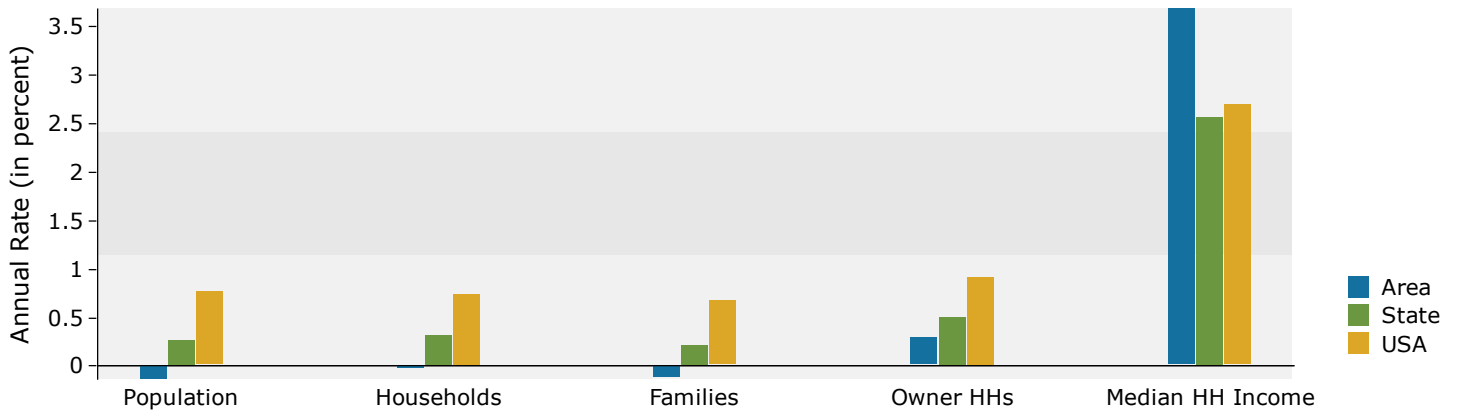
Summary	Census 2010	2019	2024				
Population	3,729	3,642	3,616				
Households	1,483	1,466	1,463				
Families	1,069	1,042	1,035				
Average Household Size	2.51	2.48	2.47				
Owner Occupied Housing Units	1,154	1,127	1,144				
Renter Occupied Housing Units	329	339	319				
Median Age	40.3	41.7	42.0				
Trends: 2019 - 2024 Annual Rate	Area	State	National				
Population	-0.14%	0.27%	0.77%				
Households	-0.04%	0.32%	0.75%				
Families	-0.13%	0.21%	0.68%				
Owner HHs	0.30%	0.51%	0.92%				
Median Household Income	3.69%	2.57%	2.70%				
Households by Income	2019		2024				
	Number	Percent	Number	Percent			
	<\$15,000	134	9.1%	89	6.1%		
	\$15,000 - \$24,999	116	7.9%	85	5.8%		
	\$25,000 - \$34,999	162	11.1%	143	9.8%		
	\$35,000 - \$49,999	284	19.4%	297	20.3%		
	\$50,000 - \$74,999	225	15.3%	189	12.9%		
	\$75,000 - \$99,999	231	15.8%	214	14.6%		
	\$100,000 - \$149,999	169	11.5%	229	15.7%		
	\$150,000 - \$199,999	93	6.3%	139	9.5%		
	\$200,000+	53	3.6%	78	5.3%		
	Median Household Income	\$53,017		\$63,553			
Average Household Income	\$73,796		\$89,596				
Per Capita Income	\$29,760		\$36,316				
Population by Age	Census 2010		2019		2024		
	Number	Percent	Number	Percent	Number	Percent	
	0 - 4	274	7.3%	241	6.6%	236	6.5%
	5 - 9	255	6.8%	247	6.8%	246	6.8%
	10 - 14	251	6.7%	237	6.5%	260	7.2%
	15 - 19	231	6.2%	190	5.2%	222	6.1%
	20 - 24	222	6.0%	172	4.7%	147	4.1%
	25 - 34	417	11.2%	462	12.7%	393	10.9%
	35 - 44	421	11.3%	391	10.7%	427	11.8%
	45 - 54	599	16.1%	430	11.8%	383	10.6%
	55 - 64	532	14.3%	588	16.1%	506	14.0%
	65 - 74	303	8.1%	430	11.8%	485	13.4%
	75 - 84	158	4.2%	185	5.1%	244	6.7%
	85+	67	1.8%	69	1.9%	66	1.8%
	Race and Ethnicity	Census 2010		2019		2024	
Number		Percent	Number	Percent	Number	Percent	
White Alone		3,524	94.5%	3,403	93.4%	3,351	92.7%
Black Alone		70	1.9%	73	2.0%	75	2.1%
American Indian Alone		6	0.2%	6	0.2%	6	0.2%
Asian Alone		20	0.5%	24	0.7%	27	0.7%
Pacific Islander Alone		1	0.0%	1	0.0%	1	0.0%
Some Other Race Alone		17	0.5%	19	0.5%	22	0.6%
Two or More Races		92	2.5%	116	3.2%	134	3.7%
Hispanic Origin (Any Race)		80	2.1%	98	2.7%	113	3.1%

**Data Note:** Income is expressed in current dollars.

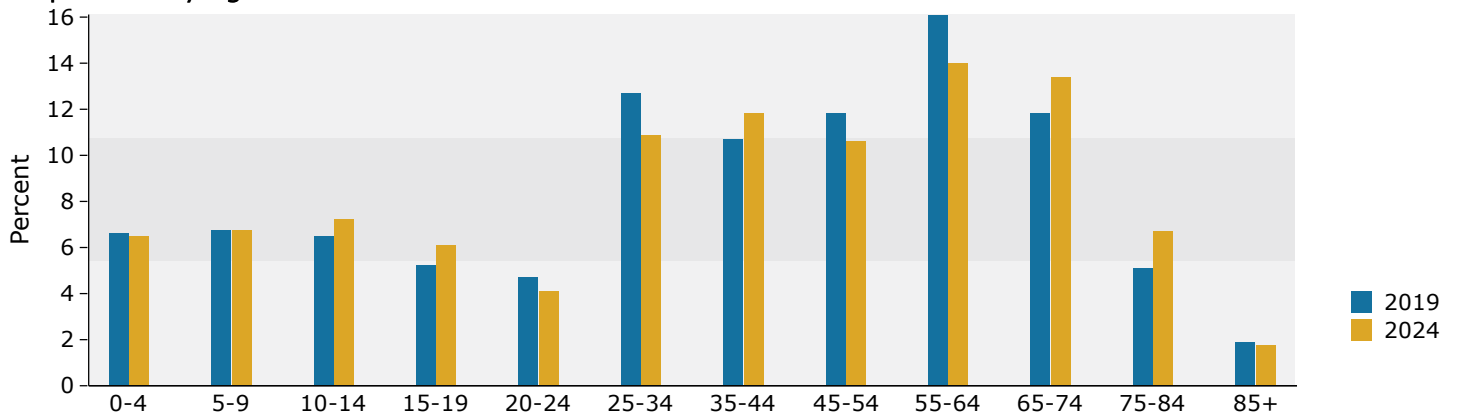
**Source:** U.S. Census Bureau, Census 2010 Summary File 1. Esri forecasts for 2019 and 2024.

July 25, 2019

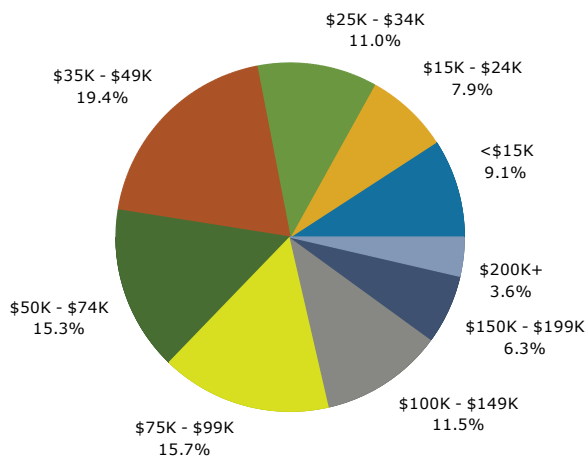
## Trends 2019-2024



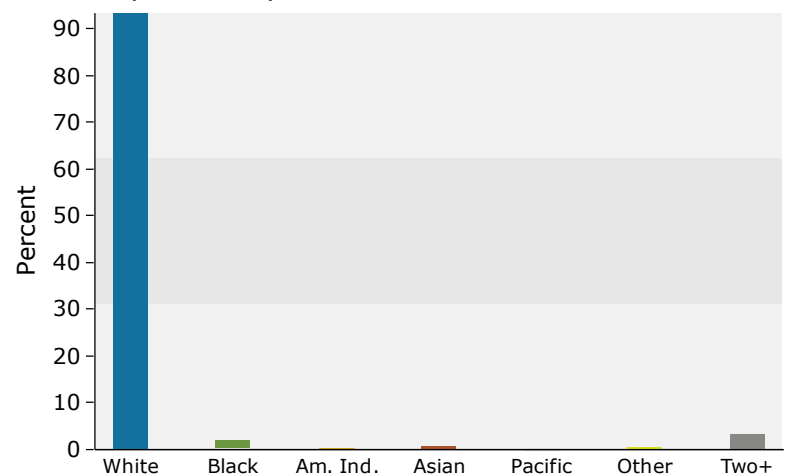
## Population by Age



## 2019 Household Income



## 2019 Population by Race



2019 Percent Hispanic Origin: 2.7%



## Demographic and Income Profile

Pine Hollow Golf Club  
Ring: 5 mile radius

Prepared by Esri  
Latitude: 42.28128  
Longitude: -84.32249

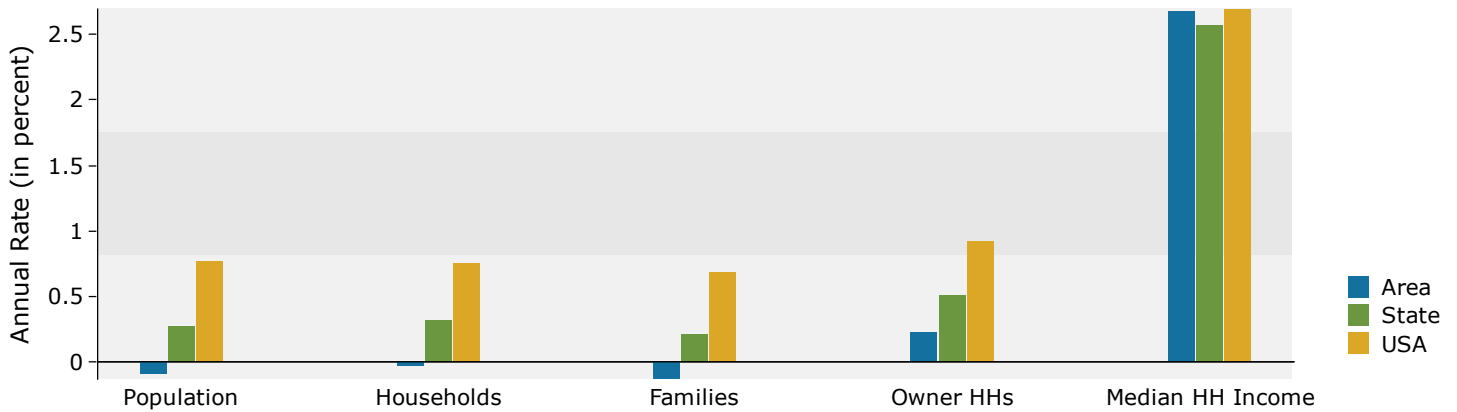
Summary	Census 2010	2019	2024				
Population	39,404	38,035	37,846				
Households	12,934	12,780	12,755				
Families	8,440	8,211	8,152				
Average Household Size	2.48	2.46	2.45				
Owner Occupied Housing Units	8,701	8,490	8,584				
Renter Occupied Housing Units	4,233	4,290	4,171				
Median Age	36.9	38.1	38.6				
Trends: 2019 - 2024 Annual Rate	Area	State	National				
Population	-0.10%	0.27%	0.77%				
Households	-0.04%	0.32%	0.75%				
Families	-0.14%	0.21%	0.68%				
Owner HHs	0.22%	0.51%	0.92%				
Median Household Income	2.68%	2.57%	2.70%				
Households by Income	2019		2024				
	Number	Percent	Number	Percent			
	<\$15,000	2,094	16.4%	1,708	13.4%		
	\$15,000 - \$24,999	1,453	11.4%	1,238	9.7%		
	\$25,000 - \$34,999	2,067	16.2%	1,895	14.9%		
	\$35,000 - \$49,999	2,108	16.5%	2,101	16.5%		
	\$50,000 - \$74,999	2,277	17.8%	2,370	18.6%		
	\$75,000 - \$99,999	1,341	10.5%	1,472	11.5%		
	\$100,000 - \$149,999	1,001	7.8%	1,323	10.4%		
	\$150,000 - \$199,999	296	2.3%	442	3.5%		
\$200,000+	143	1.1%	205	1.6%			
Median Household Income	\$39,358		\$44,916				
Average Household Income	\$53,025		\$62,183				
Per Capita Income	\$18,750		\$21,877				
Population by Age	Census 2010		2019		2024		
	Number	Percent	Number	Percent	Number	Percent	
	0 - 4	2,426	6.2%	2,187	5.8%	2,150	5.7%
	5 - 9	2,311	5.9%	2,082	5.5%	2,055	5.4%
	10 - 14	2,356	6.0%	2,036	5.4%	2,056	5.4%
	15 - 19	2,550	6.5%	2,151	5.7%	2,139	5.7%
	20 - 24	2,881	7.3%	2,809	7.4%	2,619	6.9%
	25 - 34	6,017	15.3%	6,055	15.9%	5,945	15.7%
	35 - 44	6,058	15.4%	5,441	14.3%	5,381	14.2%
	45 - 54	6,176	15.7%	5,308	14.0%	5,066	13.4%
	55 - 64	4,287	10.9%	4,783	12.6%	4,564	12.1%
	65 - 74	2,302	5.8%	3,171	8.3%	3,550	9.4%
	75 - 84	1,427	3.6%	1,403	3.7%	1,762	4.7%
	85+	612	1.6%	608	1.6%	559	1.5%
Race and Ethnicity	Census 2010		2019		2024		
	Number	Percent	Number	Percent	Number	Percent	
	White Alone	31,693	80.4%	30,163	79.3%	29,721	78.5%
	Black Alone	5,641	14.3%	5,416	14.2%	5,407	14.3%
	American Indian Alone	194	0.5%	190	0.5%	190	0.5%
	Asian Alone	213	0.5%	243	0.6%	266	0.7%
	Pacific Islander Alone	6	0.0%	11	0.0%	12	0.0%
	Some Other Race Alone	406	1.0%	469	1.2%	500	1.3%
	Two or More Races	1,252	3.2%	1,542	4.1%	1,750	4.6%
	Hispanic Origin (Any Race)	1,591	4.0%	1,870	4.9%	2,073	5.5%

**Data Note:** Income is expressed in current dollars.

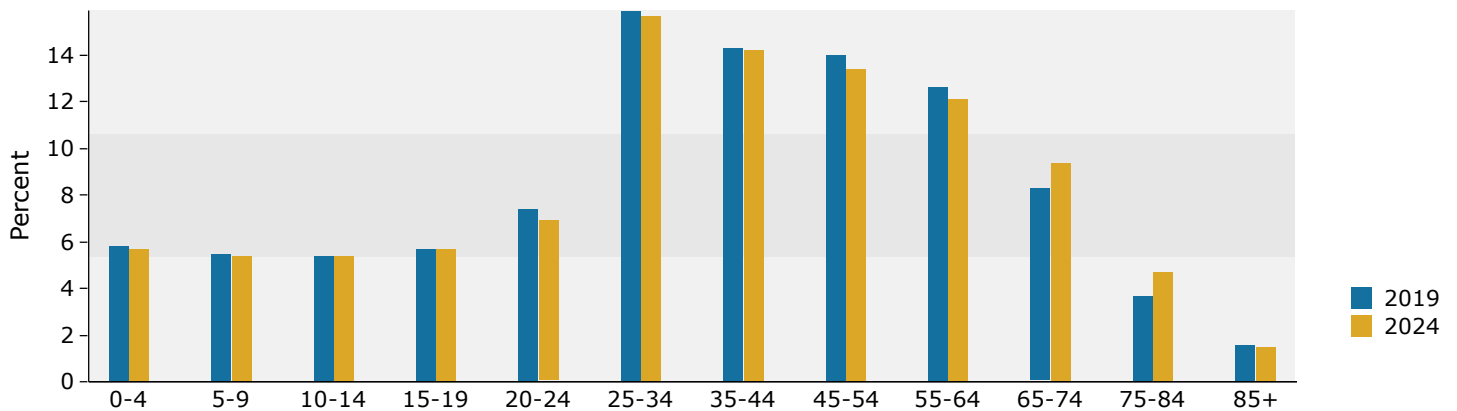
**Source:** U.S. Census Bureau, Census 2010 Summary File 1. Esri forecasts for 2019 and 2024.

July 25, 2019

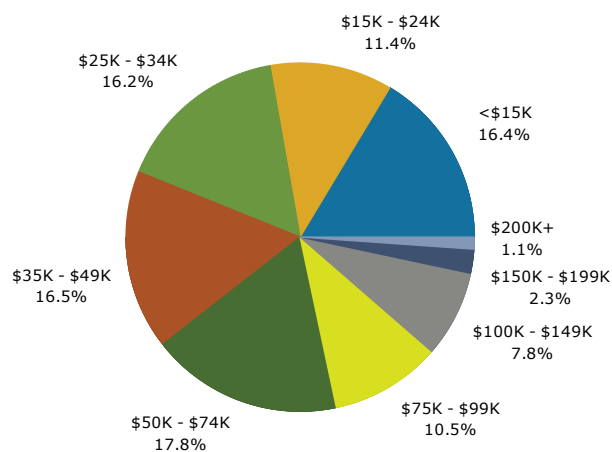
## Trends 2019-2024



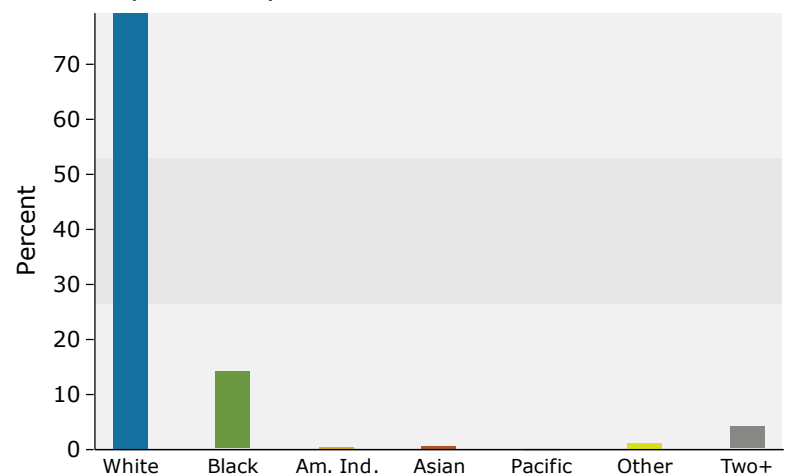
## Population by Age



## 2019 Household Income



## 2019 Population by Race



2019 Percent Hispanic Origin: 4.9%



## Demographic and Income Profile

Pine Hollow Golf Club  
Ring: 10 mile radius

Prepared by Esri  
Latitude: 42.28128  
Longitude: -84.32249

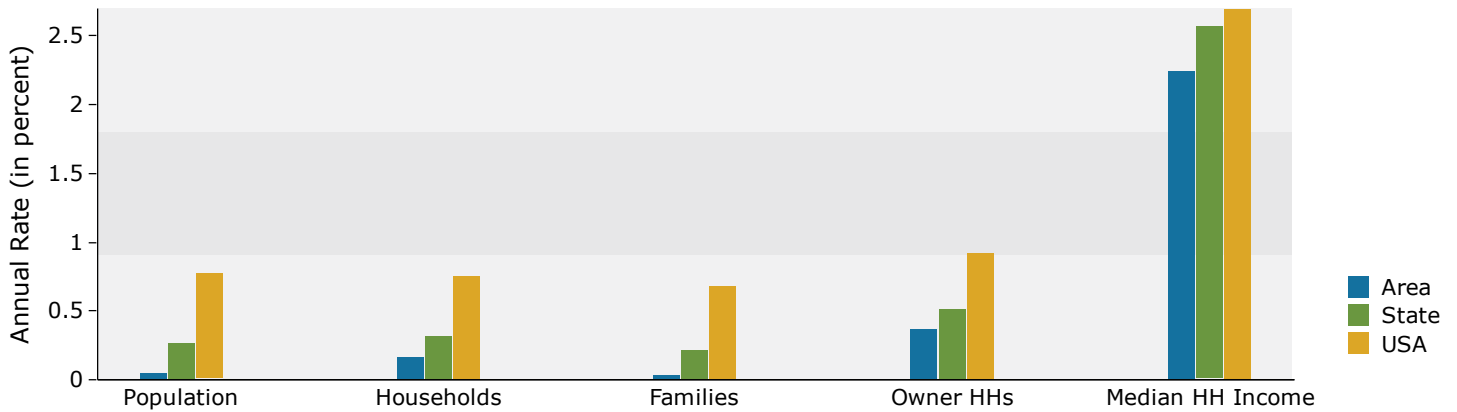
Summary	Census 2010	2019	2024				
Population	119,053	118,468	118,775				
Households	45,165	45,833	46,216				
Families	29,485	29,400	29,465				
Average Household Size	2.45	2.42	2.41				
Owner Occupied Housing Units	31,386	31,281	31,864				
Renter Occupied Housing Units	13,779	14,553	14,351				
Median Age	38.6	40.2	41.0				
Trends: 2019 - 2024 Annual Rate	Area	State	National				
Population	0.05%	0.27%	0.77%				
Households	0.17%	0.32%	0.75%				
Families	0.04%	0.21%	0.68%				
Owner HHs	0.37%	0.51%	0.92%				
Median Household Income	2.24%	2.57%	2.70%				
Households by Income	2019		2024				
	Number	Percent	Number	Percent			
	<\$15,000	6,025	13.1%	4,998	10.8%		
	\$15,000 - \$24,999	4,406	9.6%	3,829	8.3%		
	\$25,000 - \$34,999	6,006	13.1%	5,491	11.9%		
	\$35,000 - \$49,999	7,269	15.9%	7,095	15.4%		
	\$50,000 - \$74,999	8,479	18.5%	8,687	18.8%		
	\$75,000 - \$99,999	5,534	12.1%	5,930	12.8%		
	\$100,000 - \$149,999	5,223	11.4%	6,340	13.7%		
	\$150,000 - \$199,999	1,848	4.0%	2,564	5.5%		
	\$200,000+	1,043	2.3%	1,281	2.8%		
Median Household Income	\$47,847		\$53,441				
Average Household Income	\$64,185		\$73,589				
Per Capita Income	\$25,198		\$29,000				
Population by Age	Census 2010		2019		2024		
	Number	Percent	Number	Percent	Number	Percent	
	0 - 4	7,478	6.3%	6,862	5.8%	6,800	5.7%
	5 - 9	7,638	6.4%	6,879	5.8%	6,782	5.7%
	10 - 14	7,939	6.7%	7,040	5.9%	7,029	5.9%
	15 - 19	8,212	6.9%	7,178	6.1%	7,034	5.9%
	20 - 24	7,495	6.3%	7,582	6.4%	7,065	5.9%
	25 - 34	15,072	12.7%	15,992	13.5%	15,753	13.3%
	35 - 44	16,197	13.6%	14,757	12.5%	14,949	12.6%
	45 - 54	18,123	15.2%	15,577	13.1%	14,747	12.4%
	55 - 64	14,661	12.3%	16,143	13.6%	15,261	12.8%
	65 - 74	8,285	7.0%	11,948	10.1%	13,345	11.2%
	75 - 84	5,392	4.5%	5,763	4.9%	7,297	6.1%
	85+	2,561	2.2%	2,748	2.3%	2,713	2.3%
	Race and Ethnicity	Census 2010		2019		2024	
Number		Percent	Number	Percent	Number	Percent	
White Alone		100,716	84.6%	98,844	83.4%	98,257	82.7%
Black Alone		12,363	10.4%	12,329	10.4%	12,348	10.4%
American Indian Alone		457	0.4%	461	0.4%	461	0.4%
Asian Alone		922	0.8%	1,109	0.9%	1,236	1.0%
Pacific Islander Alone		28	0.0%	49	0.0%	59	0.0%
Some Other Race Alone		1,081	0.9%	1,284	1.1%	1,377	1.2%
Two or More Races		3,485	2.9%	4,392	3.7%	5,037	4.2%
Hispanic Origin (Any Race)		4,064	3.4%	4,951	4.2%	5,572	4.7%

**Data Note:** Income is expressed in current dollars.

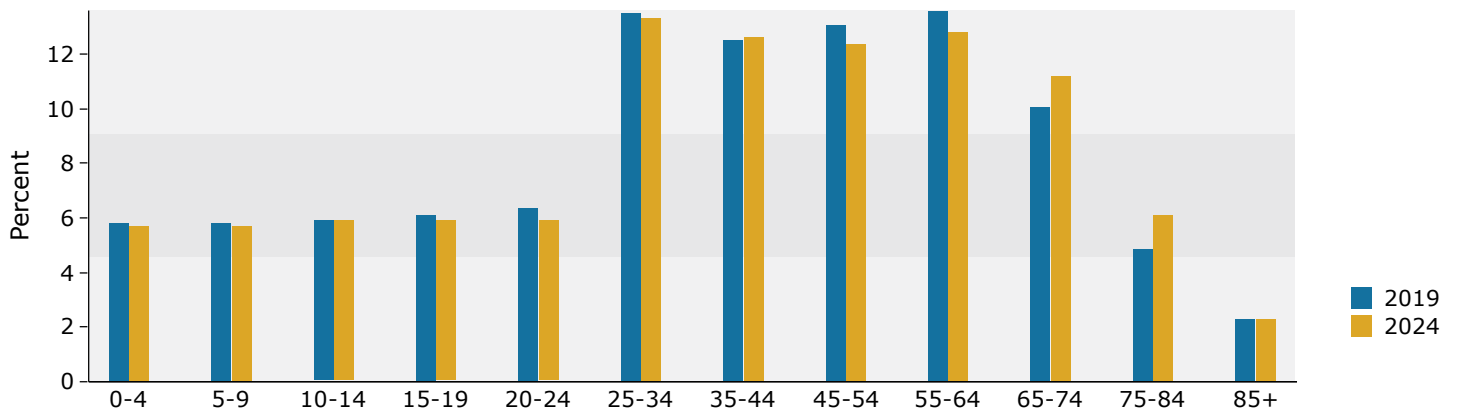
**Source:** U.S. Census Bureau, Census 2010 Summary File 1. Esri forecasts for 2019 and 2024.

July 25, 2019

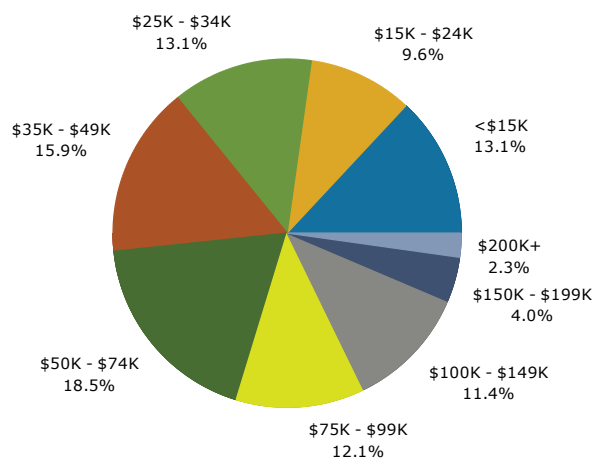
## Trends 2019-2024



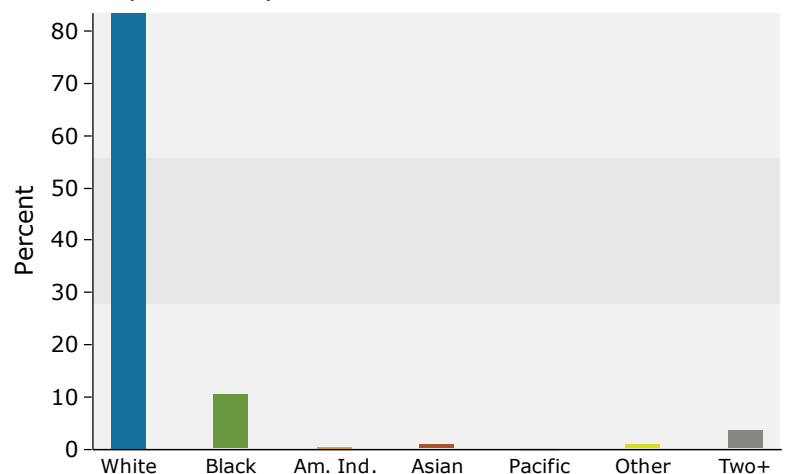
## Population by Age



## 2019 Household Income



## 2019 Population by Race



2019 Percent Hispanic Origin: 4.2%